

TARA Wall valve clockwise closing 1/2" - Brushed Dark Platinum

TARA

36 607 882 Product version from 10/14/2020 to 8/1/2021



- rosette Ø 55 mm
- head part with cut-to-length spindle and sleeve
- WRAS

	Brushed Dark Platinum	36 607 882-99
	Chrome	36 607 882-00
	Brushed Platinum	36 607 882-06
	Platinum	36 607 882-08
	Dark Chrome	36 607 882-19
	Brushed Durabronze (23kt Gold)	36 607 882-28
	Matte Black	36 607 882-33
	Brushed Dark Brass (PVD)	36 607 882-39
	Brushed Bronze (PVD)	36 607 882-42
	Brushed Dark Bronze (PVD)	36 607 882-43
	Brushed Champagne (22kt Gold)	36 607 882-46
	Champagne (22kt Gold)	36 607 882-47
	Brushed Chrome	36 607 882-93

Required miscellaneous

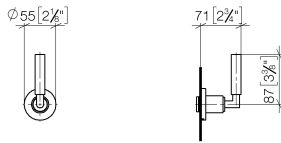
Wall valve 1/2" - 35 607 970 90



- min. recess depth 85 mm
- max. recess depth 145 mm

36 607 882 Product version from 10/14/2020 to 8/1/2021

mm [inches]



Flow rate chart



Codes & Standards

ASME A112.18.1	cUPC	DIN 4109	EN 1111
EN 200	ISO 3822	Scottish Water Byelaws	UK Water Supply Regulations

Ü-Zeichen



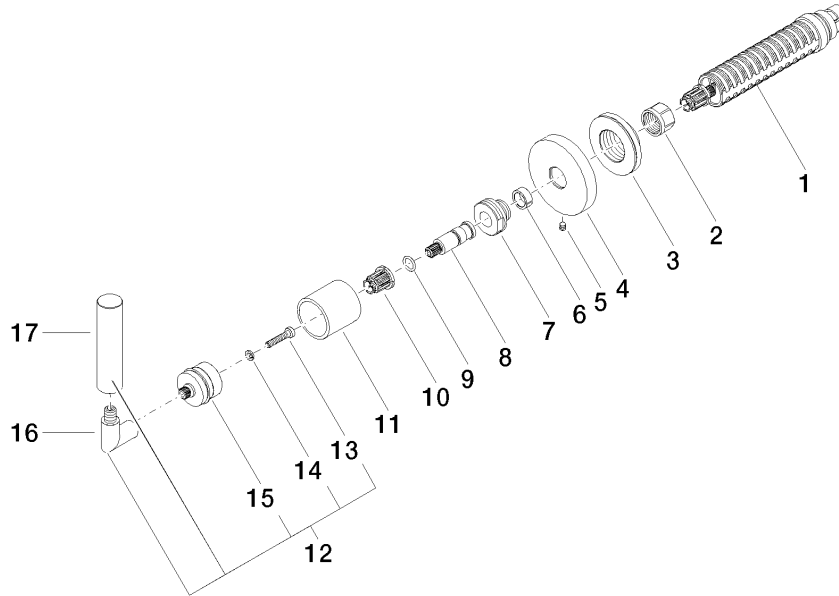
TARA Wall valve clockwise closing 1/2" - Brushed Dark Platinum

TARA

36 607 882 Product version from 10/14/2020 to 8/1/2021

Certificates and sustainability

WRAS_2011	DVGW_DW- 6501DN0	DVGW_DW- 6512DN0	LGA_29	WRAS_2010
LGA_29	IAPMO_4976 (EPD-DOR-20230287 -IBA1-EN Environmental.prod uct-declarat		



Spare parts list

No.	Item Number	Name	Quantity used	Delivery time
11	09 21 02 144-99	Cover Ø 30 x 30 mm - Brushed Dark Platinum	1.00	40
2	90 23 30 023 00 90	Cap nut -	1.00	14
1	90 90 03 143 00 90	Head part clockwise closing 1/2" -	1.00	14
6	90 14 15 020 03 90	Support ring -	1.00	14
14	90 30 11 029 00 90	Connection Spring lock washer Ø 4 -	1.00	14
15	90 12 12 007 00-99	Handle Socket retainer Ø 29 x 26 mm - Brushed Dark Platinum	1.00	40
3	09 21 02 108 90	Sleeve Ø 43,1 x 13 mm -	1.00	-
Spare part can no longer be ordered, please order the replacement item				
9021021080090 Wall disc complete -				
5	90 31 11 007 00 90	Mounting Threaded pin with hexagon socket M4 x 6 mm	1.00	14
16	04 18 20 022 00-99	Handle Angle piece 26 x 23 x 12 mm - Brushed Dark Platinum	1.00	40
9	90 14 10 060 00 90	O-Ring 8,0 x 1,5 mm -	1.00	14
7	09 24 05 002 90	Nipple Ø 24 x 16 mm -	1.00	14
10	90 12 12 002 00 90	Fixing cap white Ø 15 x 12 mm -	1.00	14
13	90 30 30 075 00 90	Mounting Cylinder head screw with hexagon socket Low profile M4 x 20 mm -	1.00	14
8	09 29 06 022 90	Connection Ø 11 x 38,5 mm -	1.00	14
4	09 27 89 115-99	Rosette Ø 55 x Ø 15,1 x 9 mm - Brushed Dark Platinum	1.00	40
17	09 20 88 052-99	Handle Ø 17 x 70 mm - Brushed Dark Platinum	1.00	40
12	04 20 88 052 10-99	handle	1.00	40