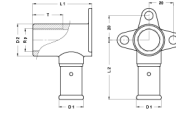


## 2P-2605: Backplate elbow female 26x3/4"



### Commercial information

The body of the fitting is made from CW617N brass. These fittings offer great advantages with regard to corrosion and they are also also better for the environment.

- The fitting has a buffer ring that prevents direct galvanic contact between the aluminium of the pipe and the brass of the fitting.
- This excludes the possibility of electrolysis occurring.
- The fitting is equipped with O-rings made from EPDM and RVS pressure sleeves with 3 inspection windows.
- In order to prevent assembly errors, the dimensions and type of press profile which can be pressed are shown on the RVS sleeves

#### Basic unit dimensions

|            |          |
|------------|----------|
| Height     | 46 mm    |
| Length     | 79 mm    |
| Width      | 52 mm    |
| Net weight | 0.249 kg |

#### Certificates

ATG, DVGW Wasser, ETA, KIWA, ÖVGW Wasser, WRAS, KOMO, STF, ÖN EN 21003-2/-3, GOST-R, ITC, TSU, QB (CSTBat), AFNOR, ACS, PZH, DNV-GL, EMI

#### Applications

Potable water, Heating, Compressed air, Cooling, Sanitary

#### Solutions

Building installations, Industry, Utility, Shipbuilding

## Technical characteristics

|                                    |               |                                  |                        |
|------------------------------------|---------------|----------------------------------|------------------------|
| Housing material                   | Brass         | Length of connection 1           | 30.5 Millimetre        |
| Housing material                   | Brass         | Working length connection 1      | 25 Millimetre          |
| Surface protection                 | Untreated     | Length of connection 2           | 52 Millimetre          |
| Shape                              | Right-angled  | Working length connection 2      | 52 Millimetre          |
| Thread size                        | 3/4 inch      | Length from wall plate           | 52 Millimetre          |
| System specific                    | ✓             | Length of connection 3           | 0 Millimetre           |
| Nominal diameter connection 2      | 3/4 inch (20) | Working length connection 3      | 0 Millimetre           |
| Connection                         | Press sleeve  | Medium temperature (continuous)  | -10 70 Degrees celsius |
| Thread size tap connection         | 3/4 inch      | Max. operating pressure at 20 °C | 16 Bar                 |
| Contour code                       | TH            |                                  |                        |
| DVGW quality mark for gas          | ✗             |                                  |                        |
| DVGW quality mark for water        | ✓             |                                  |                        |
| KIWA certified                     | ✓             |                                  |                        |
| Gastec QA mark                     | ✗             |                                  |                        |
| KOMO certified                     | ✓             |                                  |                        |
| Type approval according to BBR/EKS | ✗             |                                  |                        |