

MADISON Three-hole basin mixer with pop-up waste - Brushed Durabronze (23kt Gold)


MADISON

20 700 370 Product version from 7/31/2009



- 135mm projection
- fixed spout
- circular, air-enriched flow
- height of mixer 72 mm
- height up to aerator 40 mm
- hole diameter valve 32 mm
- hole diameter spout 35 mm
- without rosette
- 2x 1/2" x 1/2" high pressure hose
- max. flow 7 l/min
- lead-free
- This product can help a building meet the requirements of Green Building Rating Systems, e.g. LEED®, BREEAM®, DGNB
- WRAS

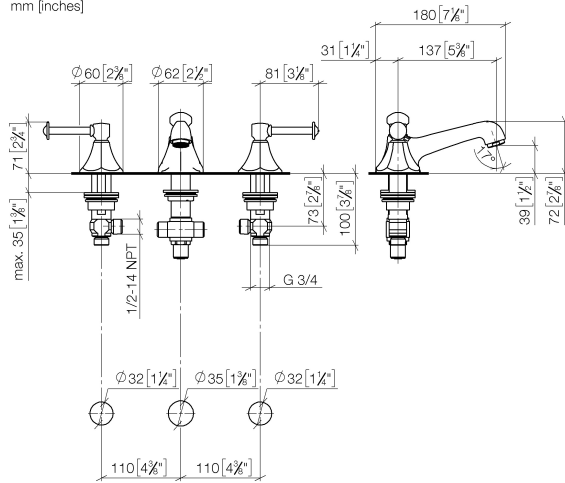
Only suitable for basins with an overflow.

	Brushed Durabronze (23kt Gold)	20 700 370-28
	Chrome	20 700 370-00
	Brushed Platinum	20 700 370-06
	Platinum	20 700 370-08
	Durabronze (23kt Gold)	20 700 370-09
	Brushed Gold (PVD)	20 700 370-37
	Brushed Dark Brass (PVD)	20 700 370-39
	Brushed Bronze (PVD)	20 700 370-42
	Brushed Dark Bronze (PVD)	20 700 370-43
	Brushed Dark Platinum	20 700 370-99

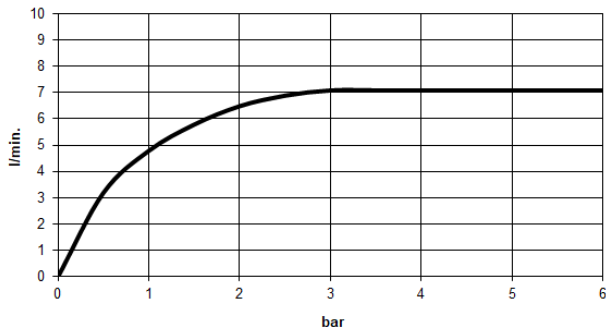
**MADISON Three-hole basin mixer with pop-up waste - Brushed Durabronz
(23kt Gold)**

MADISON

20 700 370 Product version from 7/31/2009
mm [inches]



Flow rate chart



Codes & Standards

DIN 4109

Executive Order
no. 1007

ISO 3822

Scottish Water
Byelaws

UK Water Supply
Regulations

Ü-Zeichen



MADISON Three-hole basin mixer with pop-up waste - Brushed Durabross
(23kt Gold)

MADISON

20 700 370 Product version from 7/31/2009

Certificates and sustainability

GDV_0400

LGA_8

WRAS_240602

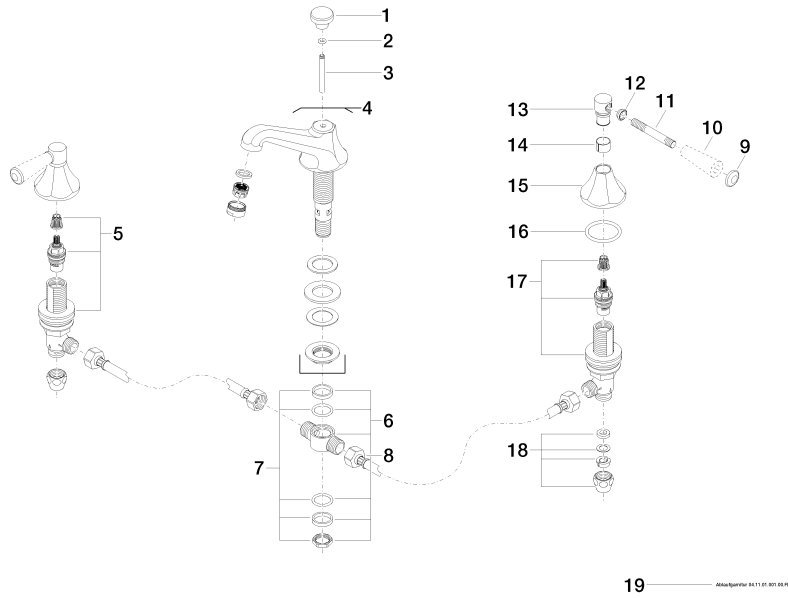
EPD-DOR-20230287
-IBA1-EN
Environmental.prod
uct-declarat

**MADISON Three-hole basin mixer with pop-up waste - Brushed Durabronz
(23kt Gold)**

MADISON

20 700 370 Product version from 7/31/2009

Parts for other
finishes can be found
here: [Chrome](#)





MADISON Three-hole basin mixer with pop-up waste - Brushed Durabron (23kt Gold)

MADISON

20 700 370 Product version from 7/31/2009

Spare parts list

No.	Item Number	Name	Quantity used	Delivery time
12	09 20 37 001-28	Handle Ø 16 x 6 mm - Brushed Durabron (23kt Gold)	2.00	40
5	90 17 11 040 51 90	Deck valve clockwise closing 1/2" -	1.00	14
4	13 700 380-28	spout	1.00	-
Spare part can no longer be ordered, please order the replacement item				
13	09 20 82 000-28	Handle Ø 23 x 41 mm - Brushed Durabron (23kt Gold)	2.00	40
3	09 31 09 004-28	Pull rod for pop-up waste Ø 6 x 425 mm - Brushed Durabron (23kt Gold)	1.00	-
Spare part can no longer be ordered, please order the replacement item				
15	09 27 37 014-28	Rosette Ø 60 x 43 mm - Brushed Durabron (23kt Gold)	2.00	40
10	11 170 370-28	MADISON Lever insert - Brushed Durabron (23kt Gold)	2.00	40
19	90 11 01 001 00-28	Basin Waste - Brushed Durabron (23kt Gold)	1.00	40
7	90 23 10 012 00 90	Mounting Distributor, 1/2" + 3/4" -	1.00	14
6	90 17 11 020 10 90	Distributor complete -	1.00	14
14	90 18 40 041 00 90	Sleeve -	2.00	14
2	90 14 10 062 00 90	O-Ring EPDM 70 6,0 x 2,5 mm -	1.00	14
11	09 28 22 013 90	Mounting Ø 10 x 75 mm -	2.00	14
16	90 14 10 043 00 90	O-Ring 40,0 x 4,0 mm -	2.00	14
18	90 23 30 040 00-28	threaded connector	2.00	40
17	90 17 11 040 50 90	Deck valve anti-clockwise closing 1/2" -	1.00	14
9	09 30 30 062-28	Cover Ø 24 x 8 mm - Brushed Durabron (23kt Gold)	2.00	40
8	04 30 04 096 00 90	High pressure hose with sleeve nut 1/2" x 1/2" x 400 mm	2.00	14
1	09 20 36 030-28	Pull button Ø 30 x 27 mm - Brushed Durabron (23kt Gold)	1.00	40