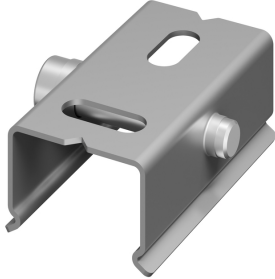


ONETRACK CEILING CLAMP STEEL S-9000/111 9200755



Features

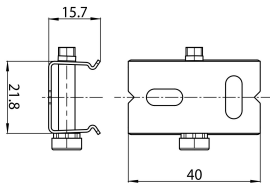
- OneTrack accessory, ceiling clamp in zinc plated steel.



Product Overview

Product name	ONETRACK CEILING CLAMP STEEL S-9000/111
Technology	Accessory
Housing	Steel
Mount	Ceiling surface mounting
General application	Museums & Galleries, Office
ETIM Class	EC002557
Housing colour	Silver
Product EAN number	4012289007553
Warranty	5 years

Technical drawings



ONETRACK CEILING CLAMP STEEL S-9000/111 9200755

Data table

GENERAL DATA

Product name	ONETRACK CEILING CLAMP STEEL S-9000/111
Technology	Accessory
Accessory type	Mounting
Type of accessory	Fixing clamp / bracket
Housing	Steel
Mount	Ceiling surface mounting
General application	Museums & Galleries, Office
ETIM Class	EC002557
Warranty	5 years

ELECTRICAL DATA

Control gear required	No
-----------------------	----

PHYSICAL DATA

Housing colour	Silver
Nominal Product Length (mm)	40
Nominal Product Width (mm)	21.8
Nominal Product Height (mm)	15.7
Weight (kg)	0.034

PACKAGING

Product EAN number	4012289007553
Packaging single length / height (cm)	3.5
Packaging single width (cm)	2.8
Packaging single depth (cm)	3.5
Units per outer package	100
Packaging outer length / height (cm)	17.0
Packaging outer width (cm)	22.0
Packaging outer depth (cm)	8.0

SAFETY DATA

Special purpose lamp	No
Dry applications use only	No
Suitable for household illumination	No