



Features

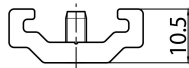
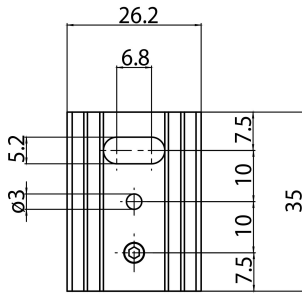
- OneTrack accessory, short pendant bracket for suspensions (to be used with spherical end steel wire), in aluminum. Black.

Product Overview

Product name	ONETRACK SP SUSPENSION BRACKET BLK S-9000/312-SV-B
Technology	Accessory
Housing	Aluminium
Mount	Suspended
General application	Museums & Galleries, Office
ETIM Class	EC002557
Housing colour	Black
Product EAN number	4012289007614
Warranty	5 years

ONETRACK SP SUSPENSION BRACKET BLK S-9000/312-SV-B 9200761

Technical drawings



Data table

GENERAL DATA

Product name	ONETRACK SP SUSPENSION BRACKET BLK S-9000/312-SV-B
Technology	Accessory
Accessory type	Mounting
Type of accessory	Pendant bracket
Housing	Aluminium
Mount	Suspended
General application	Museums & Galleries, Office
ETIM Class	EC002557
Warranty	5 years

ONETRACK SP SUSPENSION BRACKET BLK S-9000/312-SV-B 9200761

ELECTRICAL DATA

Control gear required	No
-----------------------	----

PHYSICAL DATA

Housing colour	Black
----------------	-------

Nominal Product Length (mm)	35
-----------------------------	----

Nominal Product Width (mm)	26.2
----------------------------	------

Nominal Product Height (mm)	10.5
-----------------------------	------

Weight (kg)	0.01
-------------	------

PACKAGING

Product EAN number	4012289007614
--------------------	---------------

Packaging single length / height (cm)	3.5
---------------------------------------	-----

Packaging single width (cm)	1.0
-----------------------------	-----

Packaging single depth (cm)	2.7
-----------------------------	-----

Units per outer package	100
-------------------------	-----

Packaging outer length / height (cm)	20.8
--------------------------------------	------

Packaging outer width (cm)	10.7
----------------------------	------

Packaging outer depth (cm)	10.5
----------------------------	------

SAFETY DATA

Special purpose lamp	No
----------------------	----

Dry applications use only	No
---------------------------	----

Suitable for household illumination	No
-------------------------------------	----