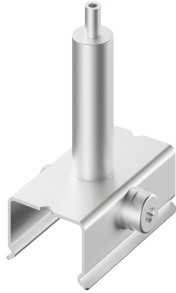


ONETRACK CLAMP+AUTOMATIC GRIPPER ALU S-9000/116 9200766



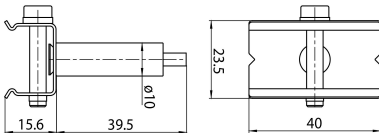
Features

- OneTrack accessory, clamp with automatic gripper. Zinc plated steel clamp, chrome plated brass gripper.

Product Overview

Product name	ONETRACK CLAMP+AUTOMATIC GRIPPER ALU S-9000/116
Technology	Accessory
Housing	Steel, Metal/plastic
Mount	Suspended
General application	Museums & Galleries, Office
ETIM Class	EC002557
Housing colour	Silver
Product EAN number	4012289007669
Warranty	5 years

Technical drawings



ONETRACK CLAMP+AUTOMATIC GRIPPER ALU S-9000/116 9200766

Data table

GENERAL DATA

Product name	ONETRACK CLAMP+AUTOMATIC GRIPPER ALU S-9000/116
Technology	Accessory
Accessory type	Mounting
Type of accessory	Fixing clamp / bracket
Housing	Steel, Metal/plastic
Mount	Suspended
General application	Museums & Galleries, Office
ETIM Class	EC002557
Warranty	5 years

ELECTRICAL DATA

Control gear required	No
-----------------------	----

PHYSICAL DATA

Housing colour	Silver
Nominal Product Length (mm)	40
Nominal Product Width (mm)	23.5
Nominal Product Height (mm)	55.1
Weight (kg)	0.024

PACKAGING

Product EAN number	4012289007669
Packaging single length / height (cm)	8.0
Packaging single width (cm)	4.0
Packaging single depth (cm)	5.3
Units per outer package	100
Packaging outer length / height (cm)	25.0
Packaging outer width (cm)	16.5

ONETRACK CLAMP+AUTOMATIC GRIPPER ALU S-9000/116 9200766

Packaging outer depth (cm)	12.5
----------------------------	------

SAFETY DATA

Special purpose lamp	No
----------------------	----

Dry applications use only	No
---------------------------	----

Suitable for household illumination	No
-------------------------------------	----