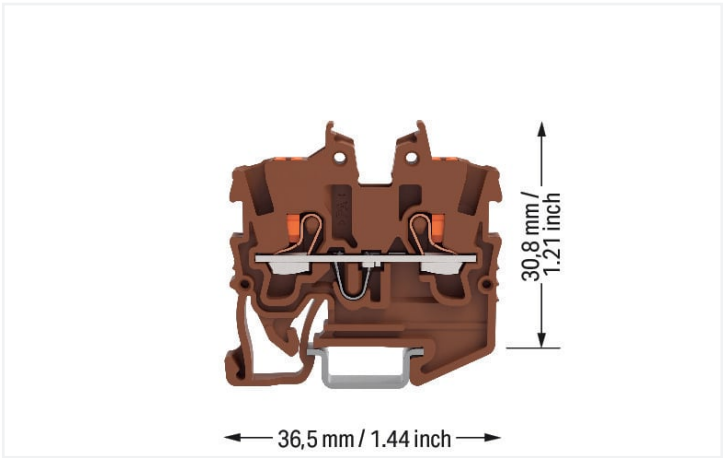
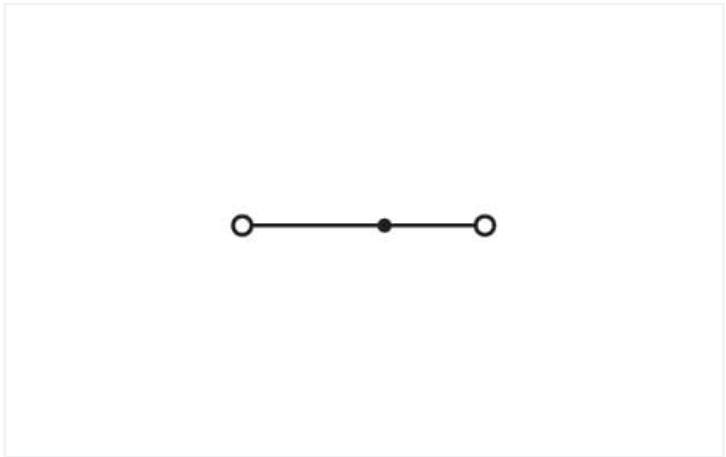
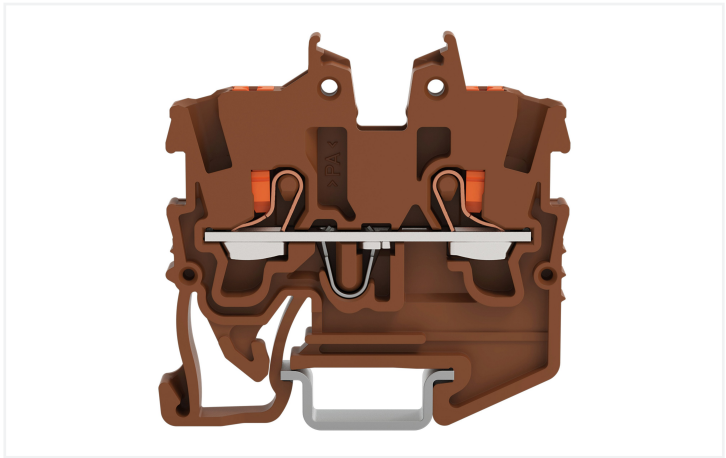


**Data Sheet | Item Number: 2250-1201/000-014**  
2-conductor miniature through terminal block; with push-button; 1 mm²; for DIN-15 rail; side and center marking; with test port; Push-in CAGE CLAMP®; 1,00 mm²; brown

<https://www.wago.com/2250-1201/000-014>



Color: ■ brown



Similar to illustration

Electrical data				
Ratings per		IEC/EN 60947-7-1		
Overvoltage category		III	III	II
Pollution degree		3	2	2
Nominal voltage		500 V	-	-
Rated surge voltage		6 kV	-	-
Rated current		13.5 A	-	-
Approvals per		UL 1059		
Use group		B	C	D
Rated voltage		300 V	300 V	-
Rated current		10 A	10 A	-
Approvals per		CSA 22.2 No 158		
Use group		B	C	D
Rated voltage		300 V	300 V	-
Rated current		10 A	10 A	-
Ex information		See "Downloads – Documentation – Additional Information: Technical Section; Technical Explications"		
Reference hazardous areas				
Ratings per		ATEX: PTB 19 ATEX 1019 U / IECEx: PTB 19.0050U (Ex eb IIC Gb)		
Rated voltage EN (Ex e II)		352 V		
Rated current (Ex e II)		13.5 A		
Rated current (Ex e II) with jumper		12 A		



Power Loss	
Rated current I <sub>N</sub> for specified power loss	13.5 A
Resistance value for specified, current-dependent power loss	0.00238 Ω

Connection data			
Connection points	2	<b>Connection 1</b>	
Total number of potentials	1	Connection technology	Push-in CAGE CLAMP®
Number of levels	1	Actuation type	Push-button
Number of jumper slots	1	Connectable conductor materials	Copper
		Nominal cross-section	1 mm²
		Solid conductor	0.14 ... 1.5 mm² / 24 ... 16 AWG
		Solid conductor; push-in termination	0.5 ... 1.5 mm² / 20 ... 16 AWG
		Fine-stranded conductor	0.14 ... 1.5 mm² / 24 ... 16 AWG
		Fine-stranded conductor; with insulated ferrule	0.14 ... 0.75 mm² / 24 ... 18 AWG
		Fine-stranded conductor; with ferrule; push-in termination	0.5 ... 0.75 mm² / 20 ... 18 AWG
		Note (conductor cross-section)	Depending on the conductor characteristic, a conductor with a smaller cross-section can also be inserted via push-in termination.
		Strip length	9 ... 11 mm / 0.35 ... 0.43 inches
		Wiring direction	Front-entry wiring

Physical data		
Width	3.5 mm / 0.138 inches	
Height	34.1 mm / 1.343 inches	
Depth from upper-edge of DIN-rail	27.9 mm / 1.098 inches	

Mechanical data	
Mounting type	DIN-15 rail
Marking level	Center/side marking

Material data	
Note (material data)	<a href="https://www.wago.com/us/material-specifications">Information on material specifications can be found here</a>
Color	brown
Material group	I
Insulation material	Polyamide (PA66)
Flammability class per UL94	V0
Fire load	0.066 MJ
Weight	2.4 g



Environmental requirements	
Processing temperature	-35 ... +85 °C
Continuous operating temperature	-60 ... +105 °C

Commercial data	
PU (SPU)	100 pcs
Country of origin	DE
GTIN	4066966309430
Customs tariff number	85369010000

Environmental Product Compliance	
RoHS Compliance Status	Compliant,No Exemption

Downloads

Environmental Product Compliance	
Compliance Search	
Environmental Product Compliance 2250-1201/000-014	

Documentation

Additional Information		
Technical Section	pdf 2240.62 KB	

CAD/CAE-Data

CAD data	
2D/3D Models 2250-1201/000-014	

1 Compatible Products

1.1 Required Accessories
1.1.1 End plate
1.1.1.1 End plate



[Item No.: 2050-1291](#)  
End and intermediate plate; 1.1 mm thick;  
gray



1.2 Optional Accessories

1.2.1 DIN-rail

1.2.1.1 Mounting accessories



**Item No.: 210-296**  
Aluminum carrier rail; 15 x 5.5 mm; 1 mm thick; 2 m long; unslopped; similar to EN 60715; silver-colored



**Item No.: 210-111**  
Steel carrier rail; 15 x 5.5 mm; 1 mm thick; 2 m long; slotted; according to EN 60715; silver-colored



**Item No.: 210-295**  
Steel carrier rail; 15 x 5.5 mm; 1 mm thick; 2 m long; unslopped; according to EN 60715; silver-colored

1.2.2 Ferrule

1.2.2.1 Ferrule



**Item No.: 216-241**  
Ferrule; Sleeve for 0.5 mm² / 20 AWG; insulated; electro-tin plated; electrolytic copper; gastight crimped; acc. to DIN 46228, Part 4/09.90; white



**Item No.: 216-242**  
Ferrule; Sleeve for 0.75 mm² / 18 AWG; insulated; electro-tin plated; electrolytic copper; gastight crimped; acc. to DIN 46228, Part 4/09.90; gray



**Item No.: 216-243**  
Ferrule; Sleeve for 1 mm² / AWG 18; insulated; electro-tin plated; electrolytic copper; gastight crimped; acc. to DIN 46228, Part 4/09.90; red

1.2.3 Installation

1.2.3.1 Cover



**Item No.: 709-156**  
Cover; Type 3; suitable for cover carrier, type 3; 1 m long; transparent

1.2.3.2 Cover carrier



**Item No.: 709-169**  
Cover carrier; Type 3; incl. fixing/retaining screws and knurled nut; suitable for 279 to 282 and 880 Series rail-mounted terminal blocks; suitable for 264 Series miniature rail-mounted terminal blocks; suitable for 270 Series sensor and actuator terminal blocks; gray

1.2.3.3 Mounting accessories



**Item No.: 249-101**  
Screwless end stop; 6 mm wide; for WMB markers; gray

## 1.2.4 Jumper

## 1.2.4.1 Jumper



Item No.: 2000-406/020-000  
Delta jumper; insulated; light gray



Item No.: 2000-410/000-006  
Jumper; 10-way; insulated; blue



Item No.: 2000-410  
Jumper; 10-way; insulated; light gray



Item No.: 2000-410/000-005  
Jumper; 10-way; insulated; red



Item No.: 2000-402/000-006  
Jumper; 2-way; insulated; blue



Item No.: 2000-402  
Jumper; 2-way; insulated; light gray



Item No.: 2000-402/000-005  
Jumper; 2-way; insulated; red



Item No.: 2000-402/000-018  
Jumper; 2-way; insulated; yellow-green



Item No.: 2000-403/000-006  
Jumper; 3-way; insulated; blue



Item No.: 2000-403  
Jumper; 3-way; insulated; light gray



Item No.: 2000-403/000-005  
Jumper; 3-way; insulated; red



Item No.: 2000-404/000-006  
Jumper; 4-way; insulated; blue



Item No.: 2000-404  
Jumper; 4-way; insulated; light gray



Item No.: 2000-404/000-005  
Jumper; 4-way; insulated; red



Item No.: 2000-405/000-006  
Jumper; 5-way; insulated; blue



Item No.: 2000-405  
Jumper; 5-way; insulated; light gray



Item No.: 2000-405/000-005  
Jumper; 5-way; insulated; red



Item No.: 2000-406/000-006  
Jumper; 6-way; insulated; blue



Item No.: 2000-406  
Jumper; 6-way; insulated; light gray



Item No.: 2000-406/000-005  
Jumper; 6-way; insulated; red



Item No.: 2000-407/000-006  
Jumper; 7-way; insulated; blue



Item No.: 2000-407  
Jumper; 7-way; insulated; light gray



Item No.: 2000-407/000-005  
Jumper; 7-way; insulated; red



Item No.: 2000-408/000-006  
Jumper; 8-way; insulated; blue



Item No.: 2000-408  
Jumper; 8-way; insulated; light gray



Item No.: 2000-408/000-005  
Jumper; 8-way; insulated; red



Item No.: 2000-409/000-006  
Jumper; 9-way; insulated; blue



Item No.: 2000-409  
Jumper; 9-way; insulated; light gray



Item No.: 2000-409/000-005  
Jumper; 9-way; insulated; red



Item No.: 2000-440  
Jumper; from 1 to 10; insulated; light gray



Item No.: 2000-433/000-006  
Jumper; from 1 to 3; insulated; blue



Item No.: 2000-433  
Jumper; from 1 to 3; insulated; light gray



Item No.: 2000-433/000-005  
Jumper; from 1 to 3; insulated; red



Item No.: 2000-434  
Jumper; from 1 to 4; insulated; light gray



Item No.: 2000-435  
Jumper; from 1 to 5; insulated; light gray



Item No.: 2000-436  
Jumper; from 1 to 6; insulated; light gray



Item No.: 2000-437  
Jumper; from 1 to 7; insulated; light gray



Item No.: 2000-438  
Jumper; from 1 to 8; insulated; light gray



Item No.: 2000-439  
Jumper; from 1 to 9; insulated; light gray



Item No.: 2000-405/011-000  
Star point jumper; 3-way; insulated; light gray



Item No.: 210-103  
Wire commoning chain; insulated; black



Item No.: 210-123  
Wire commoning chain; insulated; blue

## 1.2.5 Marking

## 1.2.5.1 Group marker carrier



Item No.: 2009-191  
Group marker carrier; gray

### 1.2.5.2 Marker



**Item No.: 793-3501**

WMB marking card; as card; plain; snap-on type; white



**Item No.: 2009-113/000-006**

WMB-Inline; for Smart Printer; 2300 pieces on roll; plain; snap-on type; blue



**Item No.: 2009-113/000-007**

WMB-Inline; for Smart Printer; 2300 pieces on roll; plain; snap-on type; gray



**Item No.: 2009-113/000-023**

WMB-Inline; for Smart Printer; 2300 pieces on roll; plain; snap-on type; green



**Item No.: 2009-113/000-017**

WMB-Inline; for Smart Printer; 2300 pieces on roll; plain; snap-on type; light green



**Item No.: 2009-113/000-012**

WMB-Inline; for Smart Printer; 2300 pieces on roll; plain; snap-on type; orange



**Item No.: 2009-113/000-005**

WMB-Inline; for Smart Printer; 2300 pieces on roll; plain; snap-on type; red



**Item No.: 2009-113/000-024**

WMB-Inline; for Smart Printer; 2300 pieces on roll; plain; snap-on type; violet



**Item No.: 2009-113**

WMB-Inline; for Smart Printer; 2300 pieces on roll; plain; snap-on type; white



**Item No.: 2009-113/000-002**

WMB-Inline; for Smart Printer; 2300 pieces on roll; plain; snap-on type; yellow

### 1.2.5.3 Marking strip



**Item No.: 2009-110**

Marking strips; for Smart Printer; on reel; not stretchable; plain; snap-on type; white

### 1.2.6 Push-in type wire jumper

#### 1.2.6.1 Jumper



**Item No.: 2009-404**

Push-in type wire jumper; 0.75 mm<sup>2</sup>; insulated; 110 mm long; gray



**Item No.: 2009-406**

Push-in type wire jumper; 0.75 mm<sup>2</sup>; insulated; 250 mm long; gray



**Item No.: 2009-402**

Push-in type wire jumper; 0.75 mm<sup>2</sup>; insulated; 60 mm long; gray

### 1.2.7 Test and measurement

#### 1.2.7.1 Testing accessories



**Item No.: 2009-174**

Test plug adapter; for 4 mm Ø test plugs; for testing TOPJOB®S rail-mounted terminal blocks; gray



**Item No.: 210-136**

Test plug; 2 mm Ø; with 500 mm cable; red



**Item No.: 2009-182**

Testing tap; for max. 2.5 mm<sup>2</sup>; tool-free connection for individual test wires 0.08 - 2.5 mm; gray

### 1.2.8 Tool

#### 1.2.8.1 Operating tool



**Item No.: 210-719**

Operating tool; Blade: 2.5 x 0.4 mm; with a partially insulated shaft



**Item No.: 210-648**

Operating tool; Blade: 2.5 x 0.4 mm; with a partially insulated shaft; angled; short

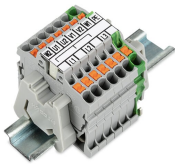


**Item No.: 210-647**

Operating tool; Blade: 2.5 x 0.4 mm; with a partially insulated shaft; multicoloured

Installation Notes

Installation



Conductor termination



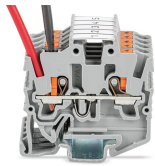
Insert solid conductors via push-in termination.



Insert ferruled conductors via push-in termination.

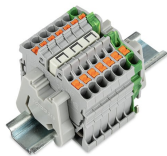


Insert fine-stranded conductors via operating tool.

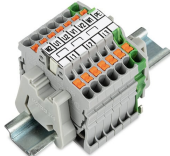


Remove all conductors via operating tool.

Commoning



Insert a delta jumper and push down until it hits the backstop (example shows terminal blocks with push-buttons).



Marking strip (2009-110) inserted in the marking slot with jumper symbols of the inserted jumper (delta jumper) (example shows terminal blocks with push-buttons)



Insert a star point jumper and push down until it hits the backstop (example shows terminal blocks with push-buttons).



Marking strip (2009-110) inserted in the marking slot with jumper symbols of the inserted jumper (2000-405/011-000 Delta Jumper) (example shows terminal blocks with push-buttons)

Testing



Testing with a 2 mm Ø 210-136 Test Plug (max. 42 V).

Marking



Snapping a marking strip into the marker slot.



Snapping a marking strip (2009-110) into a marker slot.