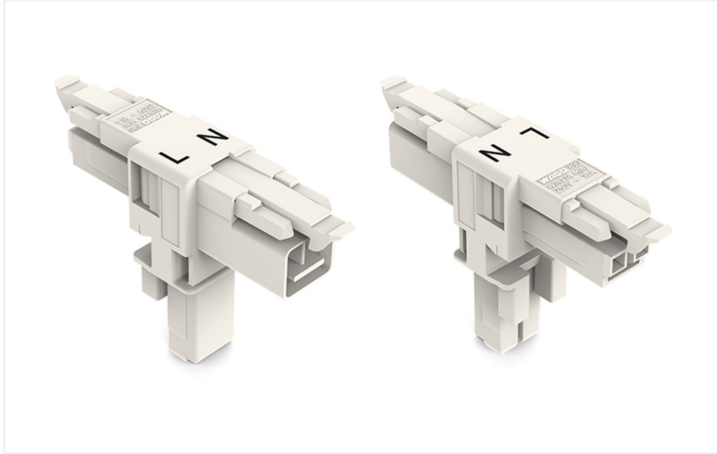


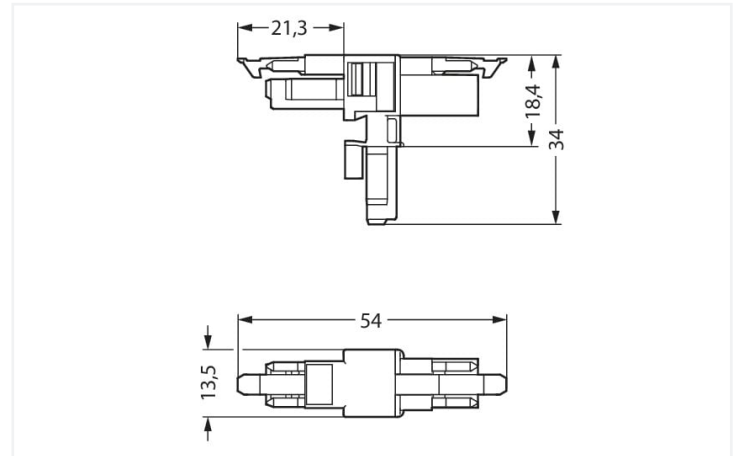
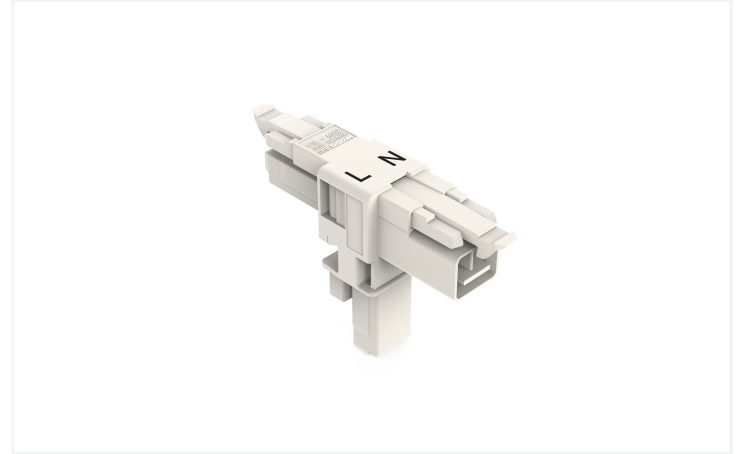
Data Sheet | Item Number: 890-1656

T-distribution connector; 2-pole; Cod. A; 1 input; 2 outputs; 2 locking levers; white

<https://www.wago.com/890-1656>



Color:  white



Dimensions in mm

Distribution connector *WINSTA*® MINI rated current 16 A

For power and signal transmission: The *WINSTA*® MINI distribution connector with protection type IP20. The pluggable installation connectors with spring pressure connection technology work without screw connections. They allow resource-efficient, error-free installation in a large number of applications. For greater protection in electrical installations, the pluggable installation connector is provided with mechanical protection against mismating. Thanks to the color coding and mechanical A coding of *WINSTA*® MINI pluggable installation connectors, you can clearly distinguish different circuits. Thanks to its particularly compact dimensions, our *WINSTA*® MINI Pluggable Connection System with Push-in CAGE CLAMP® spring pressure connection technology is very suitable in very tight spaces, i.e., for connections when very little room is available.

WINSTA® MINI solutions for your electrical installation – protected against mismating and maintenance-free

The *WINSTA*® Pluggable Connection System allows pluggable electrical installation. This significantly reduces the need for servicing and lowers costs. Take advantage of the pluggable version of our maintenance-free spring pressure connection technology too! Plan your installation with with protection against mismating from WAGO.

- pluggable installation connectors with protection against mismating
- consistent IP40 protection
- with A coding for a large number of applications
- flexible installation to save space
- rapid, structured electrical installation



Electrical data

| Ratings per IEC/EN 60664-1 | | | | Approvals per UL 1977 | |
|----------------------------|-------|-----|----|-----------------------|-------|
| Overvoltage category | III | III | II | Rated voltage | 600 V |
| Pollution degree | 3 | 2 | 2 | Rated current | 14 A |
| Nominal voltage | 250 V | - | - | | |
| Rated surge voltage | 4 kV | - | - | | |
| Rated current | 16 A | - | - | | |

| General information | |
|----------------------------|--|
| Note on contact resistance | approx. 1 mΩ of contact resistance approx. 0.25 mΩ contact transition plug/ socket |

Connection data

| Total number of potentials | 2 | Connection 1 | |
|----------------------------|---|--------------|---|
| | | Pole number | 2 |

Physical data

| | |
|-------------|------------------------|
| Pin spacing | 4.4 mm / 0.173 inches |
| Width | 13.5 mm / 0.531 inches |
| Height | 34 mm / 1.339 inches |
| Depth | 54 mm / 2.122 inches |

Mechanical data

| | |
|---|--|
| Use | General mains applications |
| Coding | A |
| Variable coding | No |
| Marking | L N |
| Potential marking | L N |
| Mating force of a plug-in connection | Approx. 20 ... 70 N (depending on pole number) |
| Retention force of a plug-in connection | When locked: > 80 N |
| Unmating force of a plug-in connection | Unlocked: approx. 20 ... 70 N (depending on pole number) |
| Number of mating cycles | 200, without resistive load |
| Type of distribution box | T-distribution connector |
| Protection type | IP20; IP40 when mated |

Plug-in connection

| | |
|-------------------------------|--|
| Mismating protection | Yes |
| Note on mismating protection | All WINSTA® components are 100% protected against mismating when: a.) plugging different numbers of poles b.) plugging while rotated 180 c.) plugging while laterally staggered d.) plugging one pole |
| Locking lever | Yes |
| Locking of plug-in connection | Locking lever |
| Note on locking system | All connectors for mounted installations (snap-in versions for lighting fixtures or devices, all types of PCB and distribution connectors) are factory-equipped with locking levers to ensure plugs and sockets are securely locked. Additional locking levers are only required for flying leads (plug/socket). |
| Number of locking levers | 2 |



| Material data | | |
|------------------------------------|---|--|
| Note (material data) | | Information on material specifications can be found here |
| Color | white | |
| Material group | I | |
| Insulation material (main housing) | Polyamide (PA66) | |
| Flammability class per UL94 | V0 | |
| Contact material | Copper or copper alloy; surface-treated | |
| Contact Plating | Tin | |
| Fire load | 0.202 MJ | |
| Weight | 6 g | |

| Environmental requirements | | |
|--|--|--|
| Processing temperature | -5 ... +40 °C | |
| Continuous operating temperature | -35 ... +85 °C | |
| Note on continuous operating temperature | Insulating parts for temperatures ≤ 105 °C | |

| Commercial data | | |
|-----------------------|---------------|--|
| Product Group | 20 (Winsta) | |
| eCl@ss 10.0 | 27-44-06-03 | |
| eCl@ss 9.0 | 27-44-06-03 | |
| ETIM 9.0 | EC002567 | |
| ETIM 8.0 | EC002567 | |
| PU (SPU) | 25 pcs | |
| Packaging type | Box | |
| Country of origin | DE | |
| GTIN | 4045454547653 | |
| Customs tariff number | 85366990990 | |

| Environmental Product Compliance | | |
|----------------------------------|------------------------|--|
| RoHS Compliance Status | Compliant,No Exemption | |

Approvals / Certificates

| General approvals | | | Declarations of conformity and manufacturer's declarations | | |
|--|-----------|------------------|--|----------|------------------|
|   | | | Approval | Standard | Certificate Name |
| Approval | Standard | Certificate Name | EU-Declaration of Confor- mity WAGO GmbH & Co. KG | - | - |
| CCA DEKRA Certification B.V. | EN 61535 | 71-123231 | UK-Declaration of Confor- mity WAGO GmbH & Co. KG | - | - |
| CCA DEKRA Certification B.V. | IEC 61535 | NL-85020 | | | |
| cURus Underwriters Laboratories Inc. | UL 1977 | E45171 | | | |



Approvals for marine applications



| Approval | Standard | Certificate Name |
|---|--------------------|------------------|
| ABS American Bureau of Ship- ping | Steel Vessel Rules | 19-HG1869855-PDA |
| DNV GL Det Norske Veritas, Ger- manischer Lloyd | - | TAE00001Z6 |
| LR Lloyds Register | EN 61535 | 08/20047 (E2) |

Downloads

Environmental Product Compliance

| Compliance Search |
|--|
| Environmental Product Compliance 890-1656 |



Documentation

| Bid Text | | | |
|----------|------------|-----------------|--|
| 890-1656 | 19.02.2019 | xml 2.73 KB | |
| 890-1656 | 03.12.2014 | doc 22.50 KB | |

CAD/CAE-Data

| CAD data |
|--------------------------|
| 2D/3D Models 890-1656 |

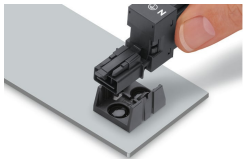


| CAE data |
|-------------------------------|
| EPLAN Data Portal 890-1656 |
| WSCAD Universe 890-1656 |
| ZUKEN Portal 890-1656 |



Installation Notes

Installation



Secure the mounting plate via pins.

