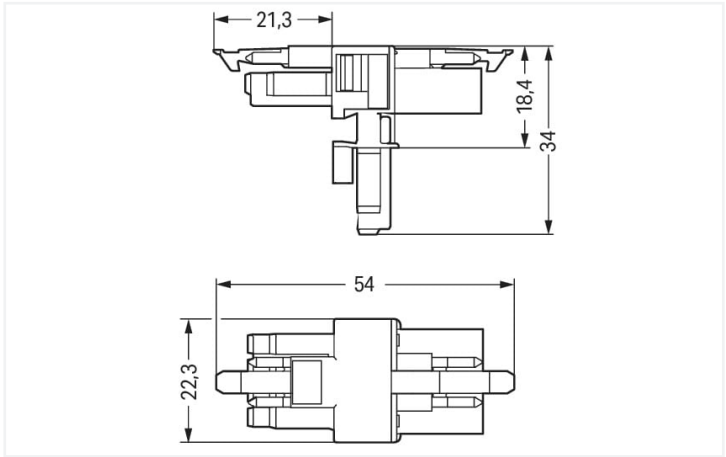




Color: white



Dimensions in mm

Distribution connector *WINSTA®* MINI with protection against mismatching

The *WINSTA®* MINI distribution connector 4-pole supports fast, reliable installation. Our pluggable installation connectors with spring pressure connection technology work without screw connections. They allow fast, efficient, error-free installation in numerous possible uses. The mechanical coding and color coding of the pluggable installation connector ensure error-free installation of the individual components – including protection against mismatching. Thanks to the color coding and mechanical A coding of *WINSTA®* MINI pluggable installation connectors, you can clearly distinguish different circuits. If only limited space is available, our smallest pluggable connection system, *WINSTA®* MINI, conveniently displays its advantageous properties. It saves space, and, with Push-in CAGE CLAMP® spring pressure connection technology, it also saves time, since the connection is low-maintenance and requires no screw connections.

Lower costs through fast commissioning and elimination of service expenses – solutions from *WINSTA®* MINI

The *WINSTA®* Pluggable Connection System is ideally tailored to the strict requirements of building installation. It makes electrical installation pluggable, and therefore faster, even more reliable, and error-free. Using this pre-assembled system reduces time spent on assembly and installation errors at the construction site. Take advantage of the pluggable version of our maintenance-free spring pressure connection technology too! Plan your installation with with protection against mismatching from WAGO.

- effective protection against mismatching
- consistent IP40 protection
- for any mains application
- custom-engineered solutions
- convenient installation and commissioning

Electrical data						
Ratings per		IEC/EN 60664-1			Approvals per	
Overvoltage category		III	III	II	UL 1977	
Pollution degree		3	2	2	Rated voltage	
Nominal voltage		400 V	-	-	Rated current	
Rated surge voltage		6 kV	-	-		
Rated current		16 A	-	-		

General information	
Note on contact resistance	approx. 1 mΩ of contact resistance approx. 0.25 mΩ contact transition plug/ socket



Connection data		
Total number of potentials	4	Connection 1
PE function	Preceding PE contact	
		Pole number4
Physical data		
Pin spacing	4.4 mm / 0.173 inches	
Width	22.3 mm / 0.878 inches	
Height	34 mm / 1.339 inches	
Depth	54 mm / 2.122 inches	
Mechanical data		
Use	General mains applications	
Coding	A	
Variable coding	No	
Marking	N ⊕ 2/L 1/L'	
Potential marking	N ⊕ 2/L 1/L'	
Mating force of a plug-in connection	Approx. 20 ... 70 N (depending on pole number)	
Retention force of a plug-in connection	When locked: > 80 N	
Unmating force of a plug-in connection	Unlocked: approx. 20 ... 70 N (depending on pole number)	
Number of mating cycles	200, without resistive load	
Type of distribution box	T-distribution connector	
Protection type	IP20; IP40 when mated	
Plug-in connection		
Mismating protection	Yes	
Note on mismating protection	All WINSTA® components are 100% protected against mismating when: a.) plugging different numbers of poles b.) plugging while rotated 180 c.) plugging while laterally staggered d.) plugging one pole	
Locking lever	Yes	
Locking of plug-in connection	Locking lever	
Note on locking system	All connectors for mounted installations (snap-in versions for lighting fixtures or devices, all types of PCB and distribution connectors) are factory-equipped with locking levers to ensure plugs and sockets are securely locked. Additional locking levers are only required for flying leads (plug/socket).	
Number of locking levers	2	
Material data		
Note (material data)	Information on material specifications can be found here	
Color	white	
Material group	I	
Insulation material (main housing)	Polyamide (PA66)	
Flammability class per UL94	V0	
Contact material	Copper or copper alloy; surface-treated	
Contact Plating	Tin	
Fire load	0.226 MJ	
Weight	10.2 g	




Environmental requirements	
Processing temperature	-5 ... +40 °C
Continuous operating temperature	-35 ... +85 °C
Note on continuous operating temperature	Insulating parts for temperatures ≤ 105 °C




Commercial data	
Product Group	20 (Winsta)
eCl@ss 10.0	27-44-06-03
eCl@ss 9.0	27-44-06-03
ETIM 9.0	EC002567
ETIM 8.0	EC002567
PU (SPU)	25 pcs
Packaging type	Box
Country of origin	DE
GTIN	4050821229568
Customs tariff number	85366990990

Environmental Product Compliance	
RoHS Compliance Status	Compliant, No Exemption

Approvals / Certificates

General approvals		Declarations of conformity and manufacturer's declarations
 		
Approval	Standard	Certificate Name
CCA DEKRA Certification B.V.	EN 61535	71-123231
CCA DEKRA Certification B.V.	IEC 61535	NL-85020
cURus Underwriters Laboratories Inc.	UL 1977	E45171
		EU-Declaration of Confor- mity WAGO GmbH & Co. KG
		UK-Declaration of Confor- mity WAGO GmbH & Co. KG

Approvals for marine applications

  		
Approval	Standard	Certificate Name
ABS American Bureau of Ship- ping	Steel Vessel Rules	19-HG1869855-PDA
DNV GL Det Norske Veritas, Ger- manischer Lloyd	-	TAE00001Z6
LR Lloyds Register	EN 61535	08/20047 (E2)



Downloads

Environmental Product Compliance

Compliance Search			
Environmental Product Compliance 890-676			

Documentation

Bid Text			
890-676	19.02.2019	xml 2.71 KB	
890-676	03.12.2014	doc 22.50 KB	

CAD/CAE-Data

CAD data	
2D/3D Models 890-676	

CAE data	
WSCAD Universe 890-676	

Installation Notes

Installation



Secure the mounting plate via pins.