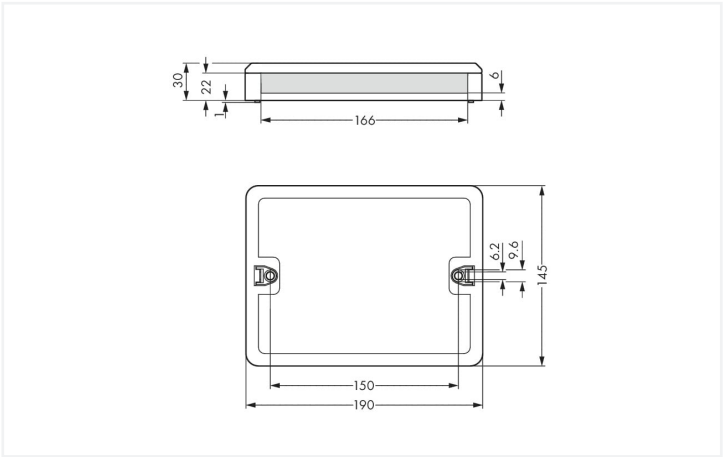


Color: ■ black



Dimensions in mm

Distribution box WINSTA® with protection type IP20

The distribution box from the WINSTA® product line with protection type IP20 is the sophisticated solution for straightforward electrical installation. With WAGO, you benefit from a large selection of accessories for the WINSTA® product line. For greater security in electrical installations, the distribution box is equipped with mechanical protection against mismating. The distribution box offers protection against contact with live components in accordance with protection type IP20 (When mated: IP2xC (These compact connectors are not designed for use in open, easily accessible areas!)). The WINSTA® distribution box with A coding in black or white is usually used for general mains applications in power distribution. Important parameters in the selection of a distribution box are the rated current and voltage: They provide information about possible domains of use and applications. This product has a current rating of 20 A – as a result it is also suitable for high power loads.

WINSTA® solutions for your electrical installation – protected against mismating and maintenance-free

The WINSTA® Pluggable Connection System allows pluggable electrical installation. This significantly reduces the need for servicing and lowers costs. Take advantage of the pluggable version of our maintenance-free spring pressure connection technology too! Plan your installation with with protection against mismating from WAGO.

- distribution boxes with protection against mismating
- intuitive marking
- saves time, since no wiring is required at the construction site
- with A coding for use in a large number of general mains applications
- quick replacement of defective units during ongoing operation

Electrical data						
Ratings per		IEC/EN 60664-1			General information	
Overvoltage category		III	III	II	Note on contact resistance	approx. 1 mΩ contact resistance approx. 0.25 mΩ contact transition (plug/ socket)
Pollution degree		3	2	2		
Nominal voltage		250 V	-	-		
Rated surge voltage		4 kV	-	-		
Rated current		20 A	-	-		

Connection data			Connection 2	
Connection 1			Connection type	Output
Connection type 1	Input			

Physical data

Width	190 mm / 7.48 inches
Height	30 mm / 1.181 inches
Depth	145 mm / 5.709 inches

Mechanical data

Internal wiring	2.5 mm ²
Use	Single-phase current (230 V)
Coding	A
Mounting type	Wall, screw mount Installation on mounting plate
Protection type	IP20; When mated: IP2xC (These compact connectors are not designed for use in open, easily accessible areas!)

Plug-in connection

Mismating protection	Yes
Note on mismating protection	All WINSTA® components are 100% protected against mismating when: a.) plugging different numbers of poles b.) plugging while rotated 180 c.) plugging while laterally staggered d.) plugging one pole
Locking of plug-in connection	Locking lever

Material data

Note (material data)	Information on material specifications can be found here
Color	black
Insulation material (main housing)	Polyamide (PA66)
Flammability class per UL94	V0
Contact material	Copper or copper alloy; surface-treated
Contact Plating	Tin
Fire load	12.637 MJ
Weight	283.5 g

Environmental requirements

Processing temperature	-5 ... +40 °C
Continuous operating temperature	-35 ... +85 °C
Note on continuous operating temperature	Insulating parts for temperatures ≤ 105 °C

Commercial data

ETIM 9.0	EC002567
ETIM 8.0	EC002567
PU (SPU)	1 pcs
Packaging type	Box
Country of origin	DE
GTIN	4055143932080
Customs tariff number	85366990990



Environmental Product Compliance	
RoHS Compliance Status	Compliant,No Exemption

Downloads

Environmental Product Compliance

Compliance Search	
Environmental Product Compliance 899-631/476-000	

1 Compatible Products

1.1 System counterpart

1.1.1 Cable assembly



[Item No.: 771-9993/206-101](#)
pre-assembled connecting cable; Eca; Plug/open-ended; 3-pole; Cod. A; H05VV-F 3G 1.5 mm²; 1 m; 1,50 mm²; black



[Item No.: 771-9993/106-101](#)
pre-assembled connecting cable; Eca; Socket/open-ended; 3-pole; Cod. A; H05VV-F 3G 1.5 mm²; 1 m; 1,50 mm²; black



[Item No.: 771-9993/006-101](#)
pre-assembled interconnecting cable; Eca; Socket/plug; 3-pole; Cod. A; H05VV-F 3G 1.5 mm²; 1 m; 1,50 mm²; black

1.1.2 Female connector/socket



[Item No.: 770-203](#)
Socket; 3-pole; Cod. A; 4,00 mm²; black



[Item No.: 770-103](#)
Socket; with strain relief housing; 3-pole; Cod. A; 4,00 mm²; black



[Item No.: 770-203/035-000](#)
Socket; with strain relief housing; 3-pole; Cod. A; 4,00 mm²; black

1.1.3 Male connector/plug



[Item No.: 770-213](#)
Plug; 3-pole; Cod. A; 4,00 mm²; black



[Item No.: 770-113](#)
Plug; with strain relief housing; 3-pole; Cod. A; 4,00 mm²; black



[Item No.: 770-213/035-000](#)
Plug; with strain relief housing; 3-pole; Cod. A; 4,00 mm²; black

1.2 Optional Accessories

1.2.1 Installation

1.2.1.1 Mounting accessories



[Item No.: 899-680](#)
Mounting plate; for distribution boxes; gray

Installation Notes

Installation

