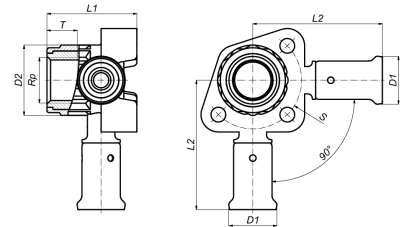
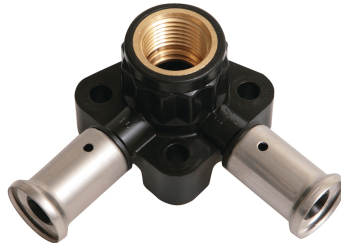


3PK-160416BP: Double Backplate elbow female short model 16x1/2"x16



Commercial information

PVDF press fittings in combination with multilayer pipe, a completely corrosion-free system. The synthetic press fittings are made from injection moulded PVDF (Polyvinylidene fluoride)*. PVDF offers the user a unique combination of properties:

- Highly resistant to pressure and temperature
- Excellent mechanical strength
- Extreme flexibility: bending up to 10° is possible
- Perfectly suited for drinking water and food
- Highly resistant to chemicals and corrosion
- Embedding is possible without extra protection

Basic unit dimensions

Height	44 mm
Length	84 mm
Width	84 mm
Net weight	0.109 kg

Certificates

ATG, QB (CSTBat), DVGW Wasser, ETA, KIWA, ÖVGW Wasser, SINTEF, WRAS, KOMO, STF, ÖN EN 21003-2/-3, GOST-R, ITC, TSU, AFNOR, PZH, ACS, DNV-GL, Aenor, Sans 21003, Kontrol Biro, RISE, EMI

Applications

Potable water, Heating, Compressed air, Cooling, Sanitary

Solutions

Building installations, Industry, Utility, Shipbuilding

Technical characteristics

Housing material	Polyvinylidene fluoride (PVDF)	Outer pipe diameter connection	16 Millimetre
Surface protection	Untreated	Length of connection 1	60 Millimetre
Shape	Right-angled	Working length connection 1	33 Millimetre
System specific	✓	Length of connection 2	42 Millimetre
Nominal diameter connection 2	1/2 inch (15)	Working length connection 2	28 Millimetre
Connection	Press sleeve	Length from wall plate	40 Millimetre
Thread size tap connection	1/2 inch	Length of connection 3	60 Millimetre
Contour code	TH	Working length connection 3	33 Millimetre
DVGW quality mark for gas	✗	Medium temperature (continuous)	-10 70 Degrees celsius
DVGW quality mark for water	✓	Max. operating pressure at 20 °C	16 Bar
KIWA certified	✓	Zeta value	4.157
Gastec QA mark	✗		
KOMO certified	✓		
Type approval according to BBR/EKS	✗		