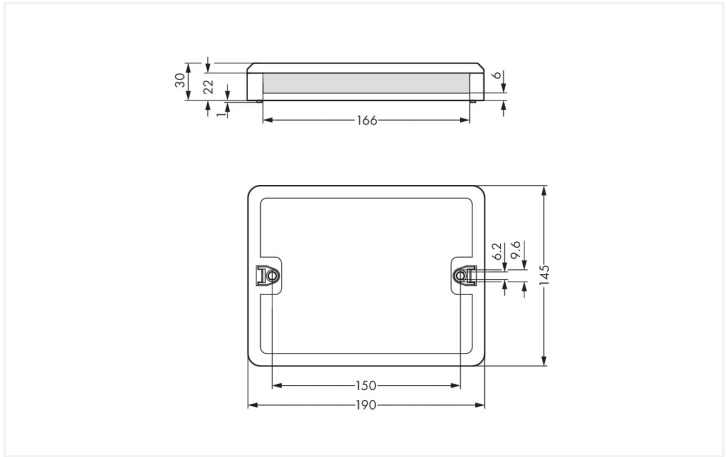


Color: ■ black



Dimensions in mm

Distribution box WINSTA® with protection against mismating

Thanks to the distribution box from the WINSTA® product line with a current rating of 25 A, zero-defect installation is guaranteed. With WAGO, you can enjoy the advantages of a large selection of expansions for the WINSTA® product line. For greater protection in electrical installations, the distribution box is provided with mechanical protection against mismating. The distribution box offers touch-proof protection with live components in accordance with protection type IP20 (When mated: IP2xC (These compact connectors are not designed for use in open, easily accessible areas!)). This distribution box is designed for a current load of up to 25 A. Therefore, it can also be used for high power loads.

Push-in CAGE CLAMP® spring pressure connection technology – pluggable installation instead of laborious screw connections!

The WINSTA® Pluggable Connection System is ideally tailored to the very strict requirements of building installation. It makes electrical installation pluggable, and therefore faster, more reliable, and error-free. Using this pre-assembled system reduces assembly times and installation errors at the construction site. Choose durability and quality – with protection type IP20 from WAGO makes the installation of electrical components noticeably easier.

- protection against mismating eliminates errors
- intuitive distribution box marking
- products perfectly tailored to your requirements guarantee safe use
- quick replacement of defective units during ongoing operation

Electrical data					General information	
Ratings per		IEC/EN 60664-1			Note on contact resistance	
Overvoltage category		III	III	II	approx. 1 mΩ contact resistance	
Pollution degree		3	2	2	approx. 0.25 mΩ contact transition (plug/ socket)	
Nominal voltage		250 V	-	-		
Rated surge voltage		4 kV	-	-		
Rated current		25 A	-	-		

Connection data				Connection 2	
Connection 1				Connection type	
Connection type 1		Input		Output	



Connection 3	
Connection type	Output

Connection 4	
Connection type	Output

Physical data	
Width	190 mm / 7.48 inches
Height	30 mm / 1.181 inches
Depth	145 mm / 5.709 inches

Mechanical data	
Internal wiring	2.5 mm²
Use	Single-pole switch circuit
Mounting type	Wall, screw mount Installation on mounting plate
Protection type	IP20; When mated: IP2xC (These compact connectors are not designed for use in open, easily accessible areas!)

Plug-in connection	
Mismating protection	Yes
Note on mismating protection	All WINSTA® components are 100% protected against mismating when: a.) plugging different numbers of poles b.) plugging while rotated 180 c.) plugging while laterally staggered d.) plugging one pole
Locking of plug-in connection	Locking lever

Material data	
Note (material data)	<a href="#">Information on material specifications can be found here</a>
Color	black
Insulation material (main housing)	Polyamide (PA66)
Flammability class per UL94	V0
Contact material	Copper or copper alloy; surface-treated
Contact Plating	Tin
Fire load	16.257 MJ
Weight	640.7 g

Environmental requirements	
Processing temperature	-5 ... +40 °C
Continuous operating temperature	-35 ... +85 °C
Note on continuous operating temperature	Insulating parts for temperatures ≤ 105 °C

Commercial data	
ETIM 9.0	EC002567
ETIM 8.0	EC002567
PU (SPU)	1 pcs
Packaging type	Box
Country of origin	DE
GTIN	4055143941983
Customs tariff number	85366990990



Environmental Product Compliance	
RoHS Compliance Status	Compliant,No Exemption

Downloads

Environmental Product Compliance

Compliance Search
Environmental Product Compliance 899-631/478-000



1 Compatible Products

1.1 System counterpart

1.1.1 Cable assembly



**Item No.: 771-9993/006-101**  
pre-assembled interconnecting cable;  
Eca; Socket/plug; 3-pole; Cod. A; H05VV-F 3G 1.5 mm²; 1 m; 1,50 mm²; black



**Item No.: 771-9993/006-102**  
pre-assembled interconnecting cable;  
Eca; Socket/plug; 3-pole; Cod. A; H05VV-F 3G 1.5 mm²; 1 m; 1,50 mm²; white



**Item No.: 771-9973/006-105**  
pre-assembled interconnecting cable;  
Eca; Socket/plug; 3-pole; Cod. S; H05VV-F 3 x 1.5 mm²; 1 m; 1,50 mm²; brown

1.1.2 Female connector/socket



**Item No.: 770-203**  
Socket; 3-pole; Cod. A; 4,00 mm²; black



**Item No.: 770-103**  
Socket; with strain relief housing; 3-pole; Cod. A; 4,00 mm²; black

1.1.3 Male connector/plug



**Item No.: 770-1373**  
Plug; 3-pole; 4,00 mm²; brown



**Item No.: 770-213**  
Plug; 3-pole; Cod. A; 4,00 mm²; black



**Item No.: 770-233**  
Plug; 3-pole; Cod. A; 4,00 mm²; white



**Item No.: 770-113**  
Plug; with strain relief housing; 3-pole; Cod. A; 4,00 mm²; black



**Item No.: 770-133**  
Plug; with strain relief housing; 3-pole; Cod. A; 4,00 mm²; white

1.2 Optional Accessories

1.2.1 Installation

1.2.1.1 Mounting accessories



**Item No.: 899-680**  
Mounting plate; for distribution boxes; gray

## Installation Notes

### Installation

