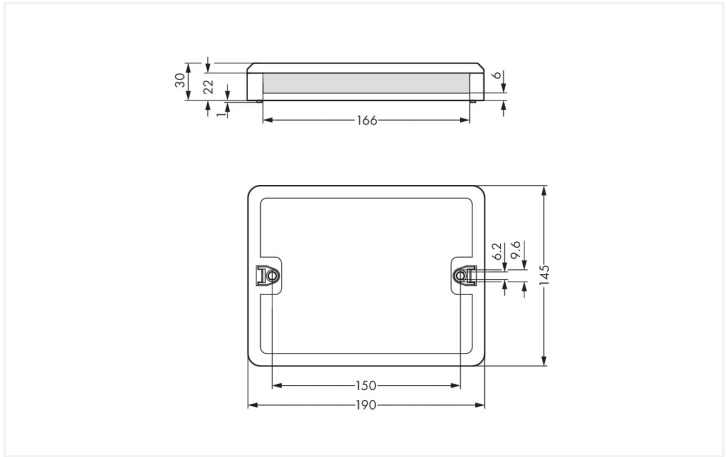


Color: ■ black



Dimensions in mm

Distribution box WINSTA® A coding

Realize your installation project without difficulty: The distribution box from the WINSTA® product line with protection type IP20 is the product of your choice for quick, straightforward installation. With WAGO, you can enjoy the advantages of a large selection of expansions for the WINSTA® product line. For greater protection in electrical installations, the distribution box is equipped with mechanical protection against mismatching. The distribution box is protected in accordance with protection type IP20 (When mated: IP2xC (These compact connectors are not designed for use in open, easily accessible areas!)). This means that users' fingers will never come into contact with energised elements. Thanks to the color coding and mechanical A coding of WINSTA® distribution boxes, you can clearly distinguish different circuits.

Lower costs through fast commissioning and elimination of service expenses – solutions from WINSTA®

The WINSTA® Pluggable Connection System allows pluggable electrical installation. This significantly reduces the need for servicing and lowers costs. Now you can also lower installation costs without compromising quality and safety: with protection against mismatching eliminates the need for servicing and prevents unnecessary downtime.

- effective protection against mismatching
- intuitive distribution box marking
- saves time, since no wiring is required at the construction site
- with A coding for a great number of applications
- quick replacement of defective units during ongoing operation

| Electrical data | | | | |
|----------------------|-------|----------------|----|---|
| Ratings per | | IEC/EN 60664-1 | | |
| Overvoltage category | III | III | II | <div>General information</div> <div>Note on contact resistance</div> <div>approx. 1 mΩ contact resistance approx. 0.25 mΩ contact transition (plug/ socket)</div> |
| Pollution degree | 3 | 2 | 2 | |
| Nominal voltage | 250 V | - | - | |
| Rated surge voltage | 4 kV | - | - | |
| Rated current | 4 A | - | - | |

| Connection data | | | | Connection 2 | |
|-------------------|--|-------|--|-----------------|--------|
| Connection 1 | | | | Connection type | Output |
| Connection type 1 | | Input | | | |

Connection 3

| | |
|-----------------|-------|
| Connection type | Input |
|-----------------|-------|

Physical data

| | |
|--------|-----------------------|
| Width | 190 mm / 7.48 inches |
| Height | 30 mm / 1.181 inches |
| Depth | 145 mm / 5.709 inches |

Mechanical data

| | |
|-----------------|---|
| Internal wiring | 1.5 mm ² |
| Use | Relay switching |
| Coding | A |
| Coding 2 | B |
| Mounting type | Wall, screw mount Installation on mounting plate |
| Protection type | IP20; When mated: IP2xC (These compact connectors are not designed for use in open, easily accessible areas!) |

Plug-in connection

| | |
|-------------------------------|---|
| Mismating protection | Yes |
| Note on mismating protection | All <i>WINSTA</i> ® components are 100% protected against mismating when: a.) plugging different numbers of poles b.) plugging while rotated 180 c.) plugging while laterally staggered d.) plugging one pole |
| Locking of plug-in connection | Locking lever |

Material data

| | |
|------------------------------------|--|
| Note (material data) | Information on material specifications can be found here |
| Color | black |
| Insulation material (main housing) | Polyamide (PA66) |
| Flammability class per UL94 | V0 |
| Contact material | Copper or copper alloy; surface-treated |
| Contact Plating | Tin |
| Fire load | 6.912 MJ |
| Weight | 279.4 g |

Environmental requirements

| | |
|--|--|
| Processing temperature | -5 ... +40 °C |
| Continuous operating temperature | -35 ... +85 °C |
| Note on continuous operating temperature | Insulating parts for temperatures ≤ 105 °C |



| Commercial data | |
|-----------------------|---------------|
| ETIM 9.0 | EC002567 |
| ETIM 8.0 | EC002567 |
| PU (SPU) | 1 pcs |
| Packaging type | Box |
| Country of origin | DE |
| GTIN | 4055143933391 |
| Customs tariff number | 85366990990 |

| Environmental Product Compliance | |
|---|--------------------------------------|
| CAS-No. | 7439-92-1 |
| REACH Candidate List Substance | Lead |
| RoHS Compliance Status | Compliant,With Exemption |
| RoHS Exemption | 7(a) |
| SCIP notification number (Austria) | 8ec22ceb-caad-466d-9ed5-99233d968323 |
| SCIP notification number (Belgium) | e9a60536-c3fd-4b63-9c69-5d62a8b1ea6f |
| SCIP notification number (Bulgaria) | d0207d8c-a402-4e2f-9c9e-50f5938caed6 |
| SCIP notification number (Czech Republic) | 181c7a05-1a96-4ed4-8f17-344d0cf16b9c |
| SCIP notification number (Denmark) | e0f4b5e1-06d2-40d5-bb8e-2c67eaa1f414 |
| SCIP notification number (Finland) | bd04bc95-0ff7-43fe-b0bc-682ea1a07066 |
| SCIP notification number (France) | 44cddfa2-0f68-4926-9827-178a8bf29896 |
| SCIP notification number (Germany) | 957a5f62-9e25-4729-ab24-466efac3ab98 |
| SCIP notification number (Hungary) | a2cf330b-025d-4d96-881b-b521be5c4721 |
| SCIP notification number (Italy) | 5241c3d9-839d-438e-8fd1-ee9066de532e |
| SCIP notification number (Netherlands) | 3bd4de10-b0b4-467f-b1c9-4ac84932e96c |
| SCIP notification number (Poland) | 7255c01f-5b4c-4138-a576-67616270b272 |
| SCIP notification number (Romania) | 8f8f636f-46e3-4c05-a3a1-64bbb6dc56a0 |
| SCIP notification number (Sweden) | bf74fb70-7c5c-44fa-8c0e-aa3bdd3b36a4 |

Downloads

Environmental Product Compliance

Compliance Search


Environmental Product Compliance
899-632/102-000

↓


1 Compatible Products

1.1 System counterpart

1.1.1 Cable assembly



Item No.: 891-8992/005-103
pre-assembled interconnecting cable;
Eca; Socket/plug; 2-pole; Cod. B; Control
cable 2 x 1.0 mm²; 1 m; 1,00 mm²; gray



Item No.: 771-9993/006-101
pre-assembled interconnecting cable;
Eca; Socket/plug; 3-pole; Cod. A; H05VV-
F 3G 1.5 mm²; 1 m; 1,50 mm²; black

1.1.2 Female connector/socket



Item No.: 890-242
Socket; 2-pole; Cod. B; 1,50 mm²; gray



Item No.: 770-203
Socket; 3-pole; Cod. A; 4,00 mm²; black



Item No.: 770-103
Socket; with strain relief housing; 3-pole; Cod. A; 4,00 mm²; black

1.1.3 Male connector/plug



Item No.: 770-213
Plug; 3-pole; Cod. A; 4,00 mm²; black



Item No.: 770-113
Plug; with strain relief housing; 3-pole; Cod. A; 4,00 mm²; black

1.2 Optional Accessories

1.2.1 Installation

1.2.1.1 Mounting accessories



Item No.: 899-680
Mounting plate; for distribution boxes; gray

Installation Notes

Installation

