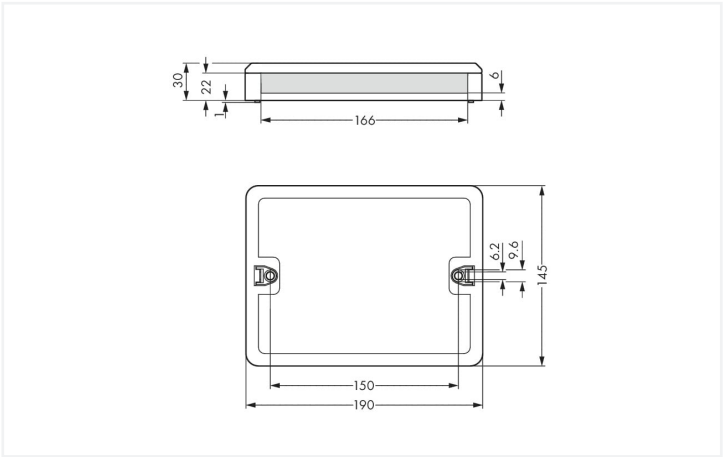


Color: ■ black



Dimensions in mm

Distribution box WINSTA® with protection against mismating

The distribution box from the WINSTA® product line with protection against mismating guarantees you the greatest possible flexibility in electrical installation. With WAGO, you benefit from a large selection of expansions for the WINSTA® product line. The color coding and mechanical coding of the distribution box ensure error-free installation of the individual components – including protection against mismating. The distribution box is protected against ingress by solid objects in accordance with protection type IP20 (When mated: IP2xC (These compact connectors are not designed for use in open, easily accessible areas!)).

Push-in CAGE CLAMP® spring pressure connection technology – pluggable installation instead of laborious screw connections!

The WINSTA® Pluggable Connection System is ideally tailored to the very strict requirements of building installation. It makes electrical installation pluggable, and thus faster, more reliable, and error-free. Using this pre-assembled system reduces assembly times and installation errors at the construction site. Enjoy the benefits of the pluggable version of our maintenance-free spring pressure connection technology too! Plan your installation with with protection against mismating from WAGO.

- protection against mismating eliminates errors
- clear slot identification for easy commissioning
- saves time, since no wiring is required at the construction site
- fast, secure installation

| Electrical data      |  |                |     |    | General information                               |  |
|----------------------|--|----------------|-----|----|---|--|
| Ratings per          |  | IEC/EN 60664-1 |     |    | Note on contact resistance                        |  |
| Overvoltage category |  | III            | III | II | approx. 1 mΩ contact resistance                   |  |
| Pollution degree     |  | 3              | 2   | 2  | approx. 0.25 mΩ contact transition (plug/ socket) |  |
| Nominal voltage      |  | 250 V          | -   | -  |   |  |
| Rated surge voltage  |  | 4 kV           | -   | -  |   |  |
| Rated current        |  | 16 A           | -   | -  |   |  |

| Connection data   |  |       |  | Connection 2    |  |
|-------------------|--|-------|--|-----------------|--|
| Connection 1      |  |       |  | Connection type |  |
| Connection type 1 |  | Input |  | Input           |  |



| Connection 3    |        |
|-----------------|--------|
| Connection type | Output |

| Physical data |                       |
|---------------|-----------------------|
| Width         | 190 mm / 7.48 inches  |
| Height        | 30 mm / 1.181 inches  |
| Depth         | 145 mm / 5.709 inches |

| Mechanical data |   |
|-----------------|---|
| Internal wiring | 2.5 mm²   |
| Use             | Latching relay  |
| Coding          | A   |
| Mounting type   | Wall, screw mount<br>Installation on mounting plate   |
| Protection type | IP20; When mated: IP2xC (These compact connectors are not designed for use in open, easily accessible areas!) |

| Plug-in connection            |   |
|-------------------------------|---|
| Mismating protection          | Yes   |
| Note on mismating protection  | All WINSTA® components are 100% protected against mismating when:<br>a.) plugging different numbers of poles<br>b.) plugging while rotated 180<br>c.) plugging while laterally staggered<br>d.) plugging one pole |
| Locking of plug-in connection | Locking lever   |

| Material data                      |  |
|------------------------------------|--|
| Note (material data)               | <a href="#">Information on material specifications can be found here</a> |
| Color                              | black  |
| Insulation material (main housing) | Polyamide (PA66)   |
| Flammability class per UL94        | V0   |
| Contact material                   | Copper or copper alloy; surface-treated                                  |
| Contact Plating                    | Tin  |
| Fire load                          | 10.343 MJ  |
| Weight                             | 630.3 g  |

| Environmental requirements               |  |
|--|--|
| Processing temperature                   | -5 ... +40 °C                              |
| Continuous operating temperature         | -35 ... +85 °C                             |
| Note on continuous operating temperature | Insulating parts for temperatures ≤ 105 °C |

| Commercial data       |               |
|-----------------------|---------------|
| ETIM 9.0              | EC002567      |
| ETIM 8.0              | EC002567      |
| PU (SPU)              | 1 pcs         |
| Packaging type        | Box           |
| Country of origin     | DE            |
| GTIN                  | 4055143940856 |
| Customs tariff number | 85366990990   |



| Environmental Product Compliance |                        |
|----------------------------------|------------------------|
| RoHS Compliance Status           | Compliant,No Exemption |

Downloads

| Environmental Product Compliance                    |  |
|---|--|
| Compliance Search                                   |  |
| Environmental Product Compliance<br>899-632/103-000 |  |

1 Compatible Products

1.1 System counterpart

1.1.1 Cable assembly



**Item No.: 771-9993/006-101**  
pre-assembled interconnecting cable;  
Eca; Socket/plug; 3-pole; Cod. A; H05VV-F 3G 1.5 mm²; 1 m; 1,50 mm²; black



**Item No.: 771-9973/006-105**  
pre-assembled interconnecting cable;  
Eca; Socket/plug; 3-pole; Cod. S; H05VV-F 3 x 1.5 mm²; 1 m; 1,50 mm²; brown

1.1.2 Female connector/socket



**Item No.: 770-203**  
Socket; 3-pole; Cod. A; 4,00 mm²; black



**Item No.: 770-103**  
Socket; with strain relief housing; 3-pole;  
Cod. A; 4,00 mm²; black

1.1.3 Male connector/plug



**Item No.: 770-1373**  
Plug; 3-pole; 4,00 mm²; brown



**Item No.: 770-213**  
Plug; 3-pole; Cod. A; 4,00 mm²; black



**Item No.: 770-113**  
Plug; with strain relief housing; 3-pole;  
Cod. A; 4,00 mm²; black

1.2 Optional Accessories

1.2.1 Installation

1.2.1.1 Mounting accessories



**Item No.: 899-680**  
Mounting plate; for distribution boxes; gray

## Installation Notes

### Installation

