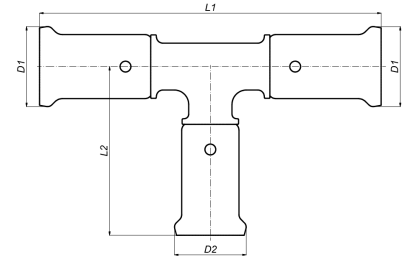


## 10PK-502650: T-Reduced centre 50x26x50



### Commercial information

PVDF press fittings in combination with multilayer pipe, a completely corrosion-free system. The synthetic press fittings are made from injection moulded PVDF (Polyvinylidene fluoride)\*. PVDF offers the user a unique combination of properties:

- Highly resistant to pressure and temperature
- Excellent mechanical strength
- Extreme flexibility: bending up to 10° is possible
- Perfectly suited for drinking water and food
- Highly resistant to chemicals and corrosion
- Embedding is possible without extra protection

#### Basic unit dimensions

Height	57 mm
Length	153 mm
Width	94 mm
Net weight	0.317 kg

#### Certificates

ATG, QB (CSTBat), DVGW Wasser, ETA, KIWA, ÖVGW Wasser, SINTEF, WRAS, KOMO, ÖN EN 21003-2/-3, GOST-R, ITC, TSU, AFNOR, PZH, STF, ACS, DNV-GL, Aenor, Sans 21003, RISE, EMI

#### Applications

Potable water, Heating, Compressed air, Cooling, Demi Water, Sanitary

#### Solutions

Building installations, Industry, Utility, Shipbuilding

## Technical characteristics

Material connection 1	Polyvinylidene fluoride (PVDF)	Angle	90 Degrees
Surface protection connection 1	Untreated	Outer pipe diameter connection 1	50 Millimetre
Surface treatment connection 1	Untreated	Wall thickness, connection 1	0.9 Millimetre
Material connection 2	Polyvinylidene fluoride (PVDF)	Outer pipe diameter connection 2	26 Millimetre
Surface protection connection 2	Untreated	Wall thickness, connection 2	0.95 Millimetre
Surface treatment connection 2	Untreated	Outer pipe diameter connection 3	50 Millimetre
Material connection 3	Polyvinylidene fluoride (PVDF)	Wall thickness, connection 3	0.9 Millimetre
Surface treatment connection 3	Untreated	Length of connection 1	79.5 Millimetre
Model	T-piece	Working length connection 1	28.5 Millimetre
Swept entry type (with inner radius)	✘	Length of connection 2	65.5 Millimetre
Reducing	✓	Working length connection 2	38.5 Millimetre
System specific	✓	Length of connection 3	79.5 Millimetre
Connection 1	Press sleeve	Working length connection 3	28.5 Millimetre
Contour code connection 1	BE	Wrench width	0 Millimetre
Connection 2	Press sleeve	Max. operating pressure at 20 °C	10 Bar
Contour code connection 2	TH	Wrench width union nut	0 Millimetre
Connection 3	Press sleeve	Medium temperature (continuous)	-10 70 Degrees celsius
Contour code connection 3	BE	Standard Dimension Ratio (SDR)	0
Flange standard	Other		
Material sealing	Ethylene-propylene diene monomer rubber (EPDM)		
Main colour fitting	Black		
High tensile strength	✘		
Ring stiffness class	Other		
With sealing rings/gaskets	✓		
With drain valve	✘		
With de-aerator	✘		
With thermal insulation	✘		
With buffer stud	✓		
Capped	✘		
FM quality mark	✘		
LPCB quality mark	✘		
ULC quality mark	✘		
UL quality mark	✘		
DIN-CERTCO certificate	✘		
VdS quality mark	✘		
With approval for TÜV	✘		
DVGW quality mark for gas	✘		
DVGW quality mark for water	✓		
KIWA certified	✓		
Gastec QA mark	✘		
KOMO certified	✓		
Type approval according to BBR/EKS	✘		