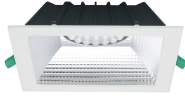


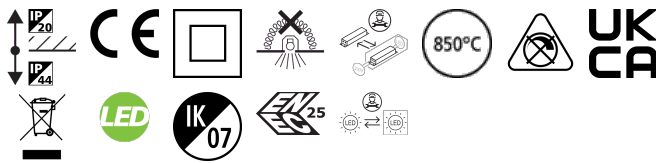
## INSAVER SQUARE 200

INSAVER UGR19 IP44 200 2500 840 SQ  
0030513



### Product features

- Insaвер is a ceiling recessed LED downlight (IP44 from the front), Die-cast aluminium body, loop in loop out connector for quick installation, Non dimmable LED driver, 20W; 2500lm; 125lm/W; 4000K; UGR <19 with shallow product depth 65mm. Meets TP(a) requirements.



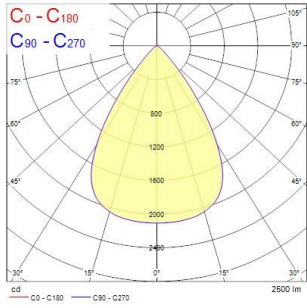
### PRODUCT OVERVIEW

Product name	INSAVER UGR19 IP44 200 2500 840 SQ
Technology	LED
Cap/Base	N/A
Housing	Aluminium
Mount	Ceiling recessed mounting
General application	Hospitality, Office, Retail
ETIM Class	EC001744
E-number FI	4278543
Warranty	5 years
Useful luminous flux (Fuse)	2500
Fixture luminous flux (lm)	2500
Luminaire efficacy (lm/W)	125
Correlated colour temperature (k)	4000
Light colour	Neutral White
CRI (Ra)	80
Colour Variation Initial (SDCM)	SDCM3
Beam Angle (°)	70
Glare control	< 19
Photobiological Risk Group	RG1
Total power consumption (W)	20
Electrical protection	Class II
Control gear type	LED driver constant current
Dimmable	No
Dimming method	N/A
LED Flickering Rate	Ultra low (5% or less)
Housing colour	RAL 9010 - Pure white
IP rating	IP44/20
IK rating	IK07
Product EAN number	5410288305134

### PHOTOMETRY

## INSAVER SQUARE 200

INSAVER UGR19 IP44 200 2500 840 SQ  
0030513



Beam Spread (C)	Beam Angle (°)	Beam Diameter (m)	Beam Area (m²)	Beam Length (m)	Beam Volume (m³)
0.5	9.46	0.50	0.196	0.50	0.098
1.0	18.91	1.00	0.785	1.00	0.393
1.5	28.37	1.50	1.766	1.50	1.021
2.0	37.73	2.00	3.142	2.00	3.142
2.5	47.09	2.50	4.909	2.50	6.133
3.0	56.45	3.00	7.069	3.00	10.603

### TECHNICAL DRAWINGS

