

**TARA Angle valve - Brushed Durabronze (23kt Gold)**

TARA

22 900 892 Product version up to 5/27/2021

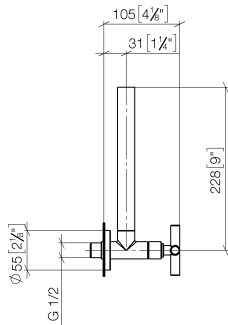


- rosette Ø 55 mm
- hose covering 200mm, for shortening

	Brushed Durabronze (23kt Gold)	22 900 892-28
	Chrome	22 900 892-00
	Brushed Platinum	22 900 892-06
	Platinum	22 900 892-08
	Dark Chrome	22 900 892-19
	Matte Black	22 900 892-33
	Brushed Gold (PVD)	22 900 892-37
	Brushed Dark Brass (PVD)	22 900 892-39
	Brushed Bronze (PVD)	22 900 892-42
	Brushed Dark Bronze (PVD)	22 900 892-43
	Brushed Champagne (22kt Gold)	22 900 892-46
	Champagne (22kt Gold)	22 900 892-47
	Brushed Dark Platinum	22 900 892-99

22 900 892 Product version up to 5/27/2021

mm [inches]

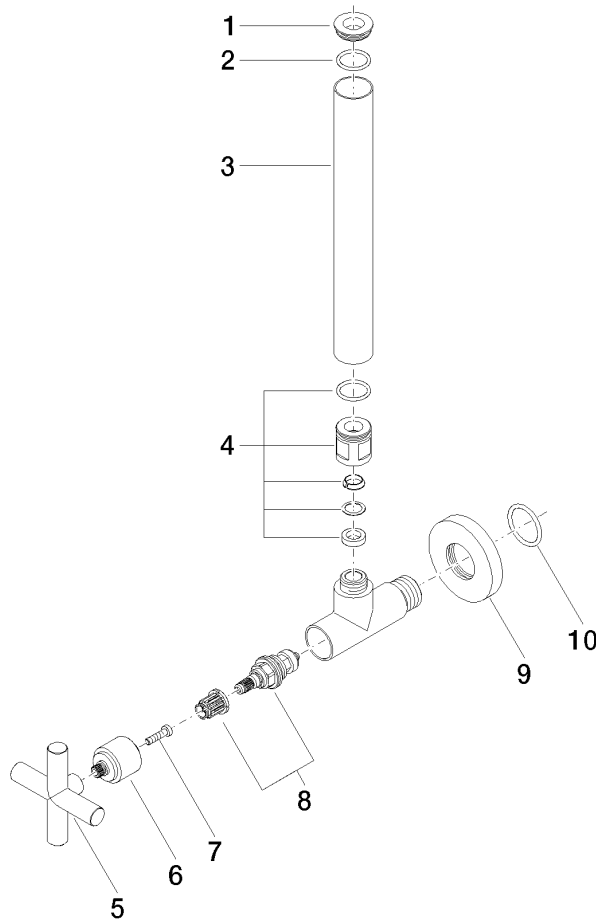


**Flow rate chart**



22 900 892 Product version up to 5/27/2021

Parts for other finishes can be found here: Chrome



### Spare parts list

No.	Item Number	Name	Quantity used	Delivery time
2	90 14 10 010 00 90	O-Ring EPDM 70 17,0 x 2,0 mm -	1.00	14
10	09 14 10 093 90	O-Ring NBR 70 23,5 x 2,5 mm -	1.00	14
1	09 21 22 000-28	Cover Ø 24 x 6 mm - Brushed Durabron (23kt Gold)	1.00	-
Spare part can no longer be ordered, please order the replacement item				
4	04 24 04 220 01-28	Compression fitting Ø 22 x 22 mm - Brushed Durabron (23kt Gold)	1.00	-
Spare part can no longer be ordered, please order the replacement item				
6	09 12 12 041-28	Fixing cap mount Ø 24 x 30,2 mm - Brushed Durabron (23kt Gold)	1.00	40
3	09 28 22 020-28	Pipe Ø 24 x 200 mm - Brushed Durabron (23kt Gold)	1.00	40
7	09 30 30 069 90	Mounting Cylinder head screw with hexagon socket Low profile M4 x 16 mm -	1.00	14
5	09 20 89 010-28	Handle 70 x 70 x 22,5 mm - Brushed Durabron (23kt Gold)	1.00	-
Spare part can no longer be ordered, please order the replacement item				
	90208901010-28	Handle TARA - Brushed Durabron (23kt Gold)		
9	09 27 22 015-28	Rosette Ø 55 x Ø 24,6 x 9 mm - Brushed Durabron (23kt Gold)	1.00	40
8	90 90 03 006 00 90	Head part Grease chamber 3/8" -	1.00	14