



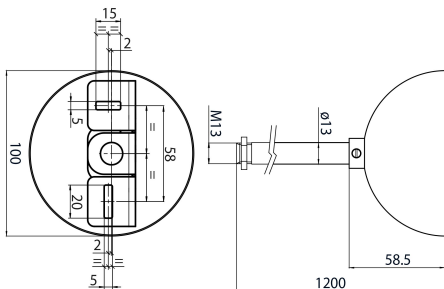
### Features

- OneTrack accessory, complete suspension set including: ceiling bracket, M13 threaded stem (diameter 13mm -length 1.2m) with counter nut, white metal ceiling cup (diameter 100mm). SET7. White. Compatible with Lytespan.

### Product Overview

<b>Product name</b>	OTRCK SET7-1, 2M M13 STEM+BRK+CUP WHT S-9000-P6-S-W
<b>Technology</b>	Accessory
<b>Housing</b>	Stainless steel, Aluminium, Metal/plastic
<b>Mount</b>	Suspended
<b>General application</b>	Museums & Galleries, Office
<b>ETIM Class</b>	EC002556
<b>Housing colour</b>	White
<b>Product EAN number</b>	4012289008796
<b>Warranty</b>	5 years

### Technical drawings



## OTRCK SET7-1,2M M13 STEM+BRK+CUP WHT S-9000-P6-S-W 9200879

### Data table

#### GENERAL DATA

Product name	OTRCK SET7-1, 2M M13 STEM+BRK+CUP WHT S-9000-P6-S-W
Technology	Accessory
Accessory type	Mounting
Type of accessory	Installation set
Housing	Stainless steel, Aluminium, Metal/plastic
Mount	Suspended
General application	Museums & Galleries, Office
ETIM Class	EC002556
Warranty	5 years

#### ELECTRICAL DATA

Control gear required	No
Connectable conductor cross section - Max (mm <sup>2</sup> )	2.5

#### PHYSICAL DATA

Housing colour	White
Nominal Product Length (mm)	1200
Nominal Product Diameter (mm)	100
Weight (kg)	1.49

#### PACKAGING

Product EAN number	4012289008796
Packaging single length / height (cm)	123.0
Packaging single width (cm)	11.4
Packaging single depth (cm)	11.4
Units per outer package	1
Packaging outer length / height (cm)	123.0

## OTRCK SET7-1,2M M13 STEM+BRK+CUP WHT S-9000-P6-S-W 9200879

Packaging outer width (cm)	11.4
----------------------------	------

Packaging outer depth (cm)	11.4
----------------------------	------

### SAFETY DATA

Special purpose lamp	No
----------------------	----

Dry applications use only	No
---------------------------	----

Suitable for household illumination	No
-------------------------------------	----