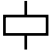

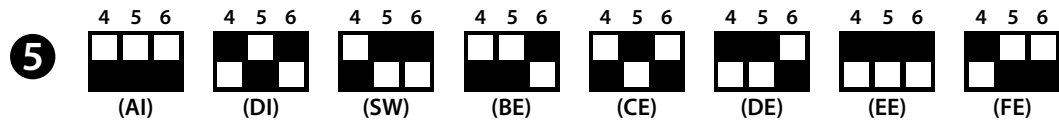
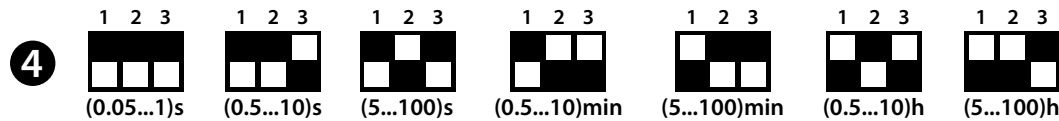
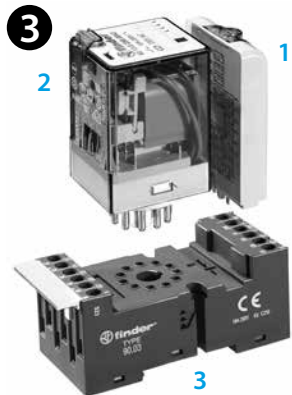
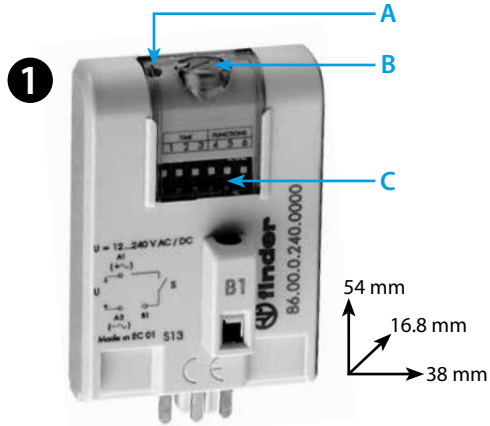


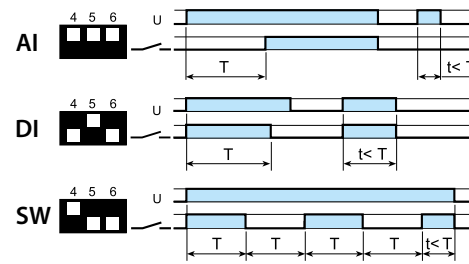
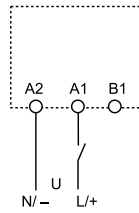


86.00

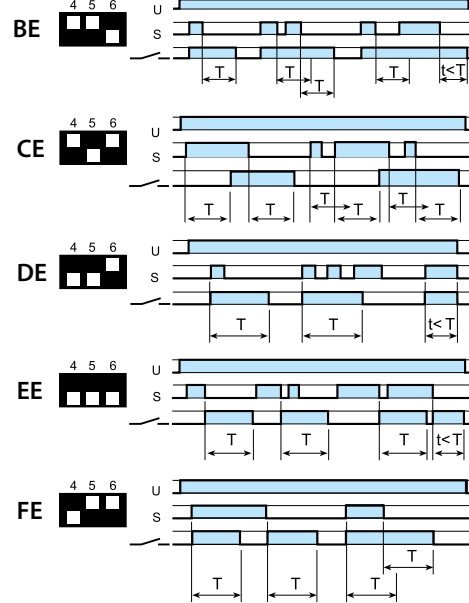
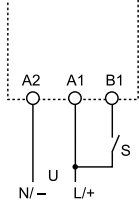
86.00.0.240.0000	
	U _N (12...240)V AC (50/60 Hz) / DC U _{min} 10.2 V AC/DC U _{max} 265 V AC/DC P 1.2 W
	(-20...+50)°C
IP20	



2 **2a**



2b



86.00
TIJDMODULE MULTIFUNCTIE MET MULTISPANNING

1 FRONTAANZICHT

- A LED
- B Potentiometer voor tijdstelling
- C Dip schakelaar: tijdbereiken en functies

2 AANSLUITSCHEMA / FUNCTIES

2a Aansluitingen start in de voedingsleiding naar A1

- AI Vertraagd-opkomend
- DI Inschakel-wissend
- SW Impulsrelais impulsbeginnend

2b Aansluitingen start in de stuurleiding naar B1

- BE Vertraagd-afvallend
- CE Inschakel-en afvalvertragend
- DE Inschakel-wissend
- EE Uitschakel-wissend
- FE Inschakel-/ Uitschakel-wissend

3 INSTALLATIE (Voorbeeld)

- 1 Tijdmodule
- 2 Relais
- 3 Aansluitvoet

	1	2	3
	86.00	56.34	96.04
	86.00	60.12	90.02
	86.00	60.13	90.03
	86.00	62.32	92.03
	86.00	62.33	92.03

4 DIP "TIME"

5 DIP "FUNCTIONS"