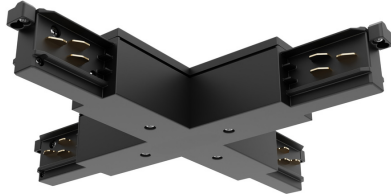


## ONETRACK X-FEED CONNECTOR BLACK 9017/B 9200740



### Features

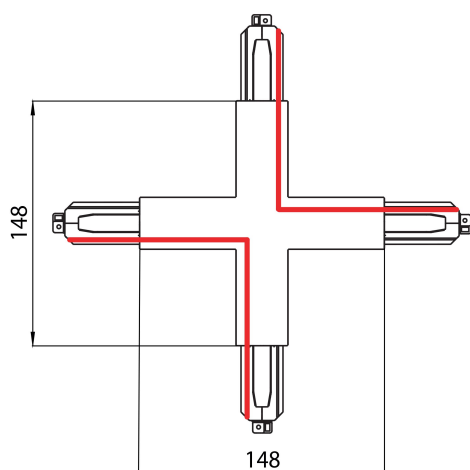
- OneTrack accessory, X-feed connector. Cover for recessed version supplied separately. Polycarbonate body, copper alloy contacts. Cover for recessed version supplied separately. Black. Please check the safety sheet to supply the track with this accessory and follow the instructions correctly.

### Product Overview

Product name	ONETRACK X-FEED CONNECTOR BLACK 9017/B
Technology	Accessory
Mount	Track mounting
General application	Museums & Galleries, Office
ETIM Class	EC002556
Housing colour	Black
Product EAN number	4012289007409
Warranty	5 years

## ONETRACK X-FEED CONNECTOR BLACK 9017/B 9200740

### Technical drawings



### Data table

#### GENERAL DATA

<b>Product name</b>	ONETRACK X-FEED CONNECTOR BLACK 9017/B
<b>Technology</b>	Accessory
<b>Accessory type</b>	Electrical
<b>Type of accessory</b>	Coupler/connector X-shape
<b>Mount</b>	Track mounting
<b>General application</b>	Museums & Galleries, Office
<b>ETIM Class</b>	EC002556
<b>Warranty</b>	5 years

#### ELECTRICAL DATA

## ONETRACK X-FEED CONNECTOR BLACK 9017/B 9200740

Primary Supply/Product voltage - min (V)	220
Primary Supply/Product voltage - max (V)	240
Control gear required	No
Connectable conductor cross section - Max (mm <sup>2</sup> )	2.5

### PHYSICAL DATA

Housing colour	Black
Nominal Product Length (mm)	148
Nominal Product Width (mm)	148
Weight (kg)	0.29

### PACKAGING

Product EAN number	4012289007409
Packaging single length / height (cm)	30.0
Packaging single width (cm)	30.0
Packaging single depth (cm)	0.32
Units per outer package	1
Packaging outer length / height (cm)	30.0
Packaging outer width (cm)	30.0
Packaging outer depth (cm)	0.32

### SAFETY DATA

Special purpose lamp	No
Dry applications use only	No
Suitable for household illumination	No