



INSTALLATION AND OPERATING INSTRUCTION

Motorized switch-disconnectors

OTM_F_

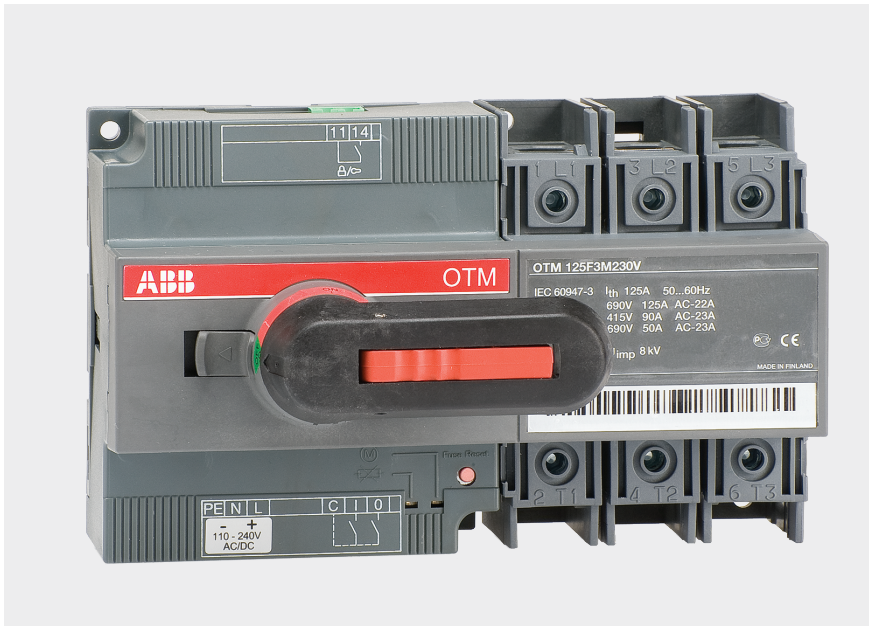
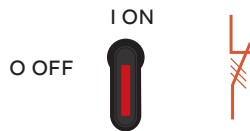
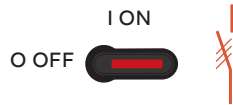
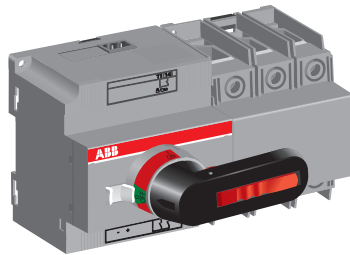


Table of contents

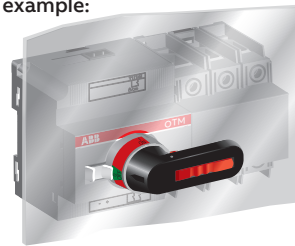
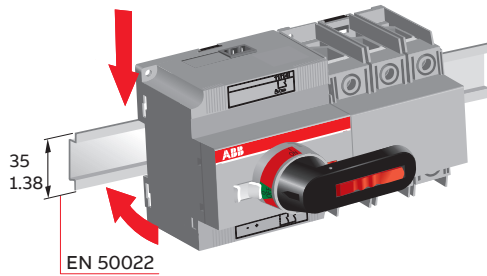
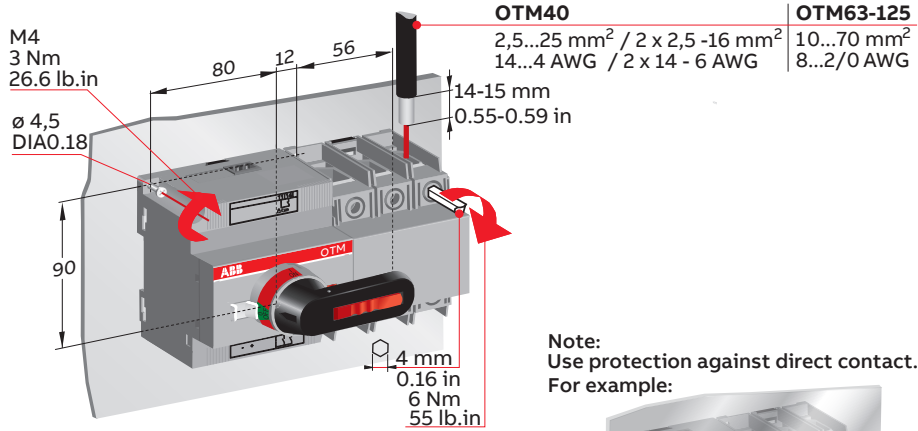
| | |
|-----|--|
| 03 | Operation |
| 04 | Installation |
| 05 | Mounting positions Control circuit |
| 06. | Manual operation: Local |
| 07 | Electrical operation: Remote Resetting fuse |
| 08 | Impulse control Continuous control |
| 09 | Locking State information |
| 10 | Technical data |
| 11 | Terminal clamp set OZX_ Terminal shrouds OTS_ |
| 12 | Auxiliary contact blocks OA_ Handle storage OTVS0 |
| 13 | Fourth pole OTP_ |
| 14 | Dimension drawings |
| 15 | Warning sheet |

Operation

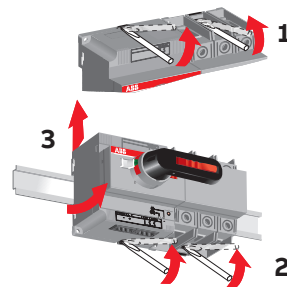


A061644

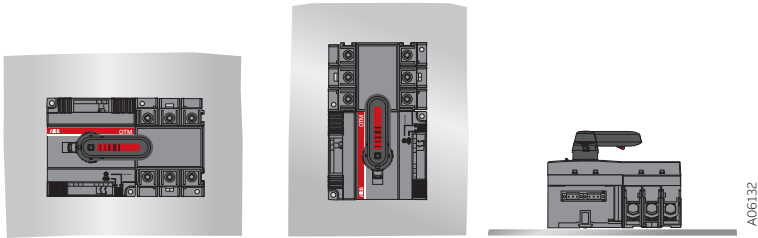
Installation



Remove



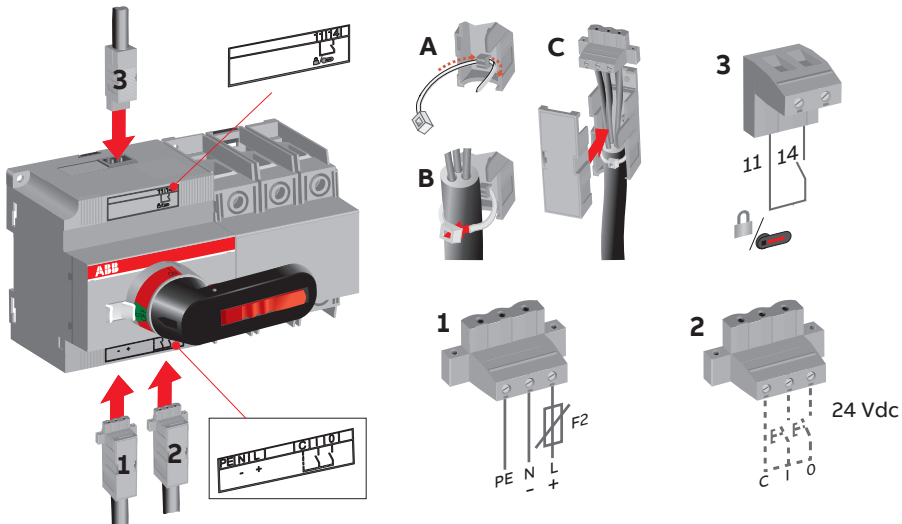
Mounting positions



Control circuit



Only an authorised electrician may perform the electrical installation and maintenance of motorized switch. Do not attempt any installation or maintenance actions when a motorized switch is connected to the electrical mains. Before starting work, make sure that the switch is de-energised.

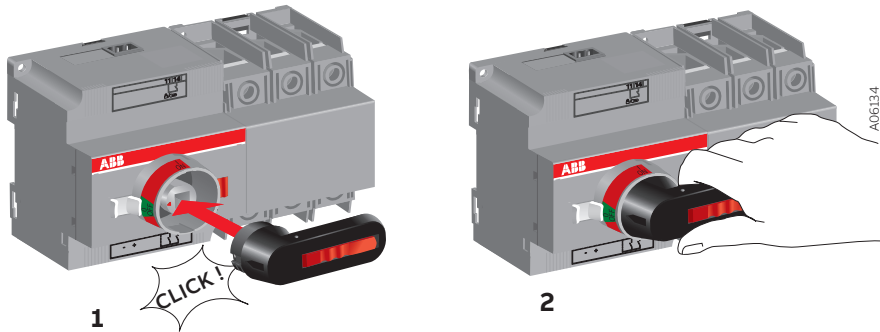


1. Terminal for motor operator voltage supply
2. Control terminal for push buttons
3. Terminal for state information of locking



Do not couple power for the control terminal. See the correct terminal for the power supply.

Manual operation: Local



Electrical operation is prevented when the handle is attached to the switch panel.

Electrical operation: Remote



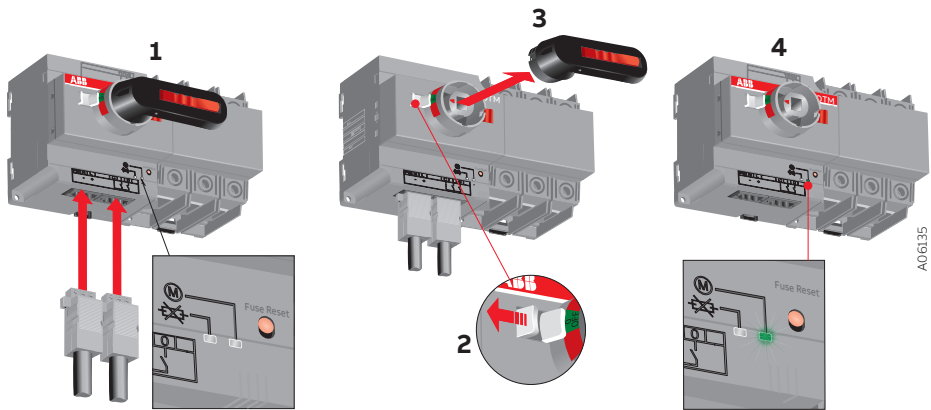
Never open any covers on the product. There may be dangerous external control voltages inside the motorized switch even if the voltage is turned off.



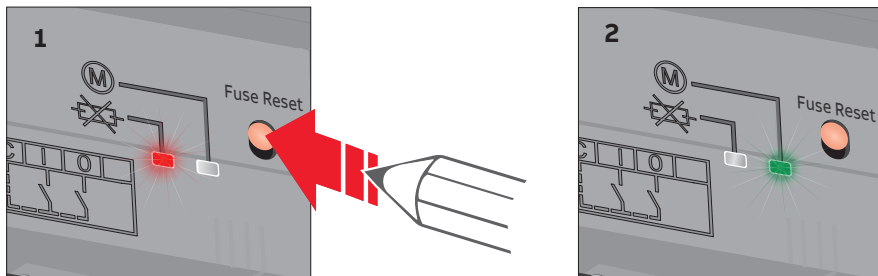
Never handle control cables when the voltage of the motorized switch or external control circuits are connected.



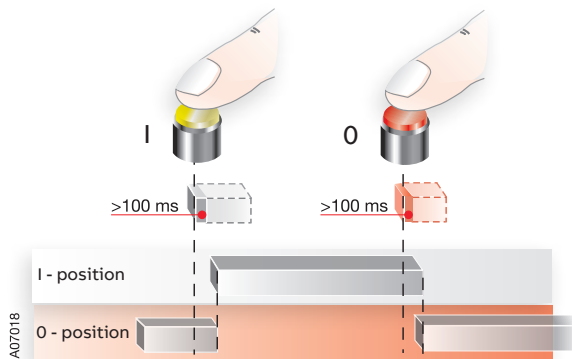
Exercise sufficient caution when handling the unit.



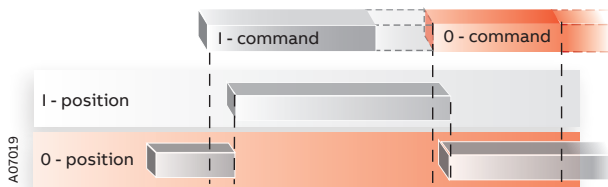
Resetting fuse



Impulse control



Continuous control



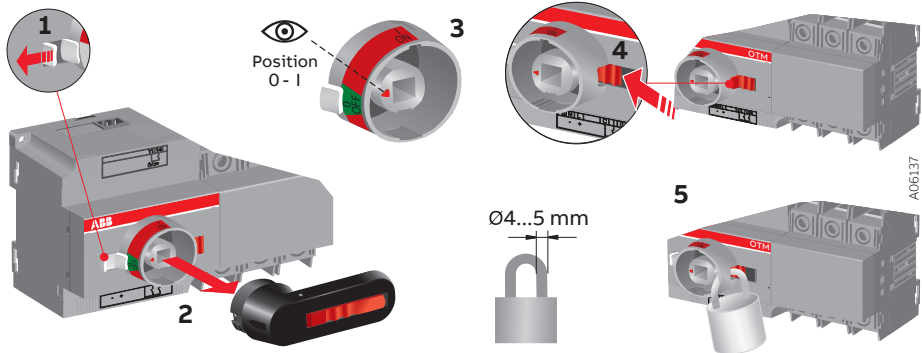
If a new command is given before the switch has reached the position of the previous command, the internal protection may operate.

Locking

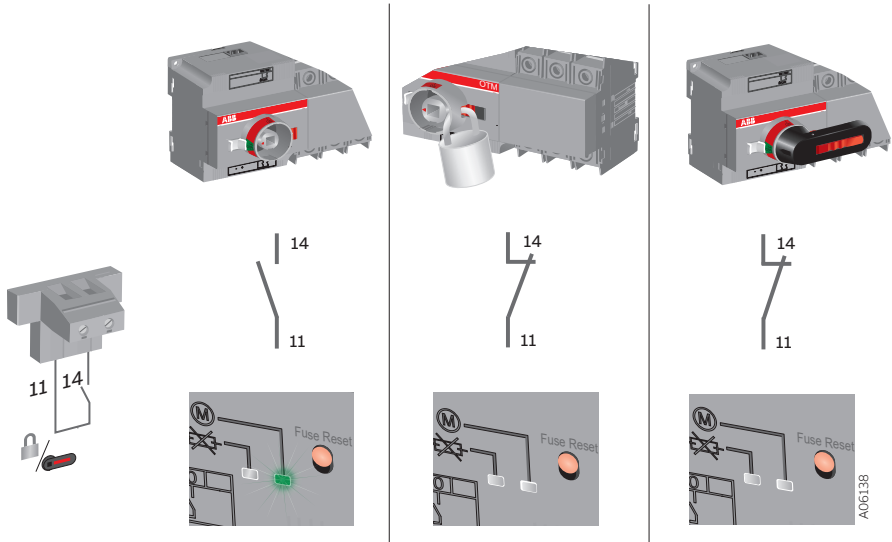
Prevent manual and electrical operation.



Locking possible at any position. Check position before locking.



State information



Technical data


| Motor operator, control circuit | Value | Cabling/Rating |
|---|---|------------------------------------|
| Rated operational voltage U [V] | 110-240 Vac/dc 50-60Hz | |
| Operating voltage range | 0.85... 1.1 x U | |
| Operating angle | 90° 0-I, I-0 | |
| Operating time | See Table 2 | |
| Protection degree | IP 20, front panel | |
| Rated impulse withstand voltage U _{imp} | 4 kV | |
| Voltage supply | PE N L , + - | 1,5 -2,5mm ² |
| | F2 Max. MCB 16A | |
| Control terminal for the push-buttons | C I 0 | 1,5 -2,5mm ² |
| Maximum cable length | 100 m | |
| Terminal for state information Also used with the automatic control unit |  | 1,5mm ² 3A AC-1/250V |
| Common, voltage supply | 11 | |
| Handle attached or motor operator locked | 14 | |
| | SCPD Max. MCB C2A | |
| Operating temperature | -25... +55 °C | |
| Transportation and storage temperature | -40... +70 °C | |
| Altitude | Max. 2000m | |

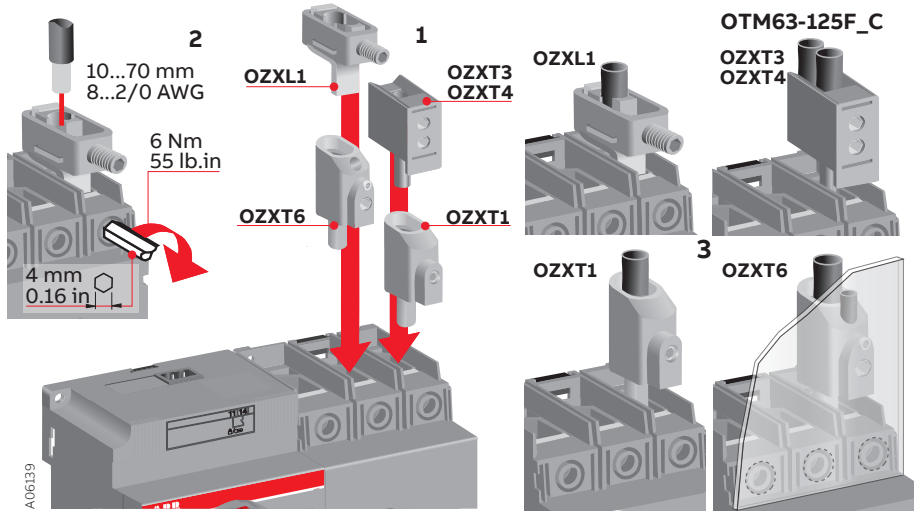
Table 1 General technical data of motor operations

| Type | Voltage U _c [V] | Nominal current ^{a)} I _n [A] | Current Inrush ^{a)} [A] | Operating time ^{a)} I-0, 0-I [s] |
|--------------|----------------------------------|---|--|--|
| OTM40...125_ | 110-240 Vac/dc | 0,2 - 0,5 | 1,5 - 3,0 | 0,5 - 1,0 |

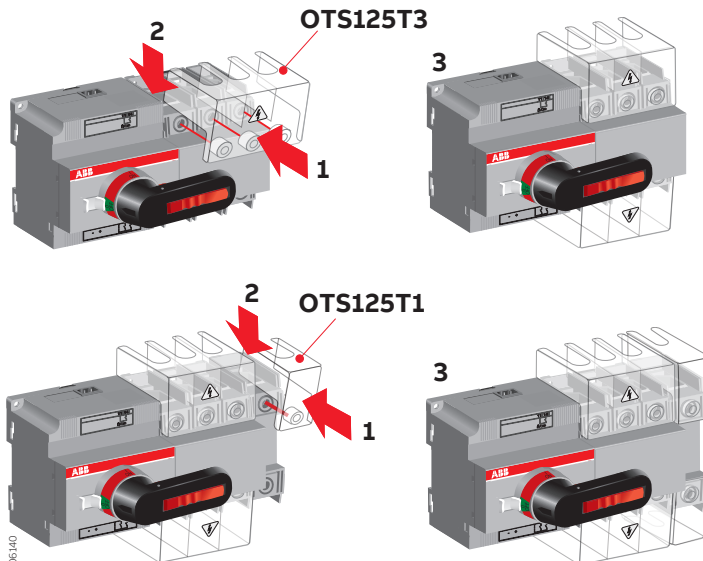
a) Under nominal conditions

Table 2 Specified technical data of motor operators

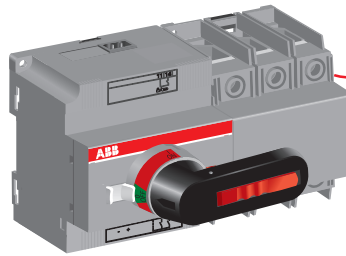
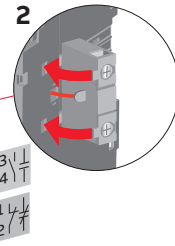
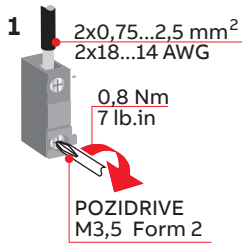
Terminal clamp sets OZX_



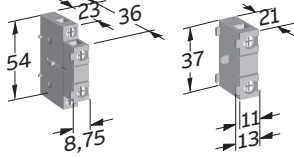
Terminal shrouds OTS_



Auxiliary contact blocks OA_

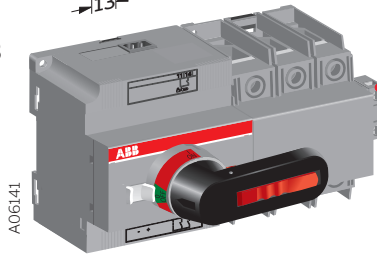


OA2G11



| max 2 | NO | NC |
|-------|---------------|---------------|
| | OA1G10 | OA8G01 |
| 1 | | |
| 0 | | |

3

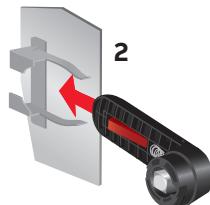
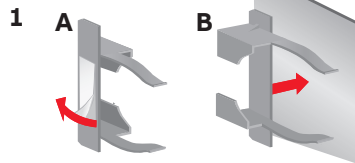
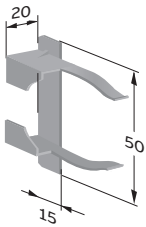


max 2
OA1G10
OA8G01
OA2G11

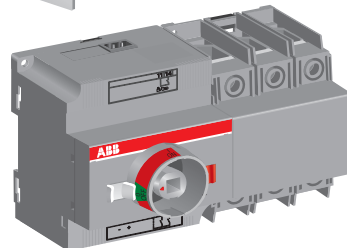
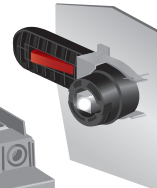
OA2G11
For 3-pole only



Handle storage OTVS0

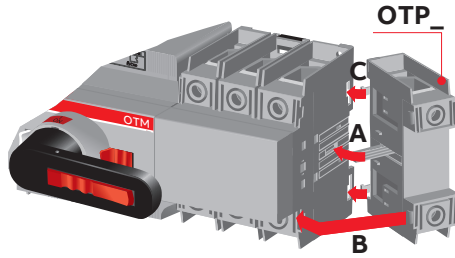


3

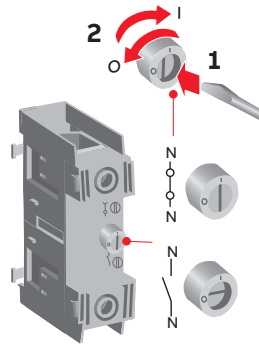


A06142

Fourth pole OTP_

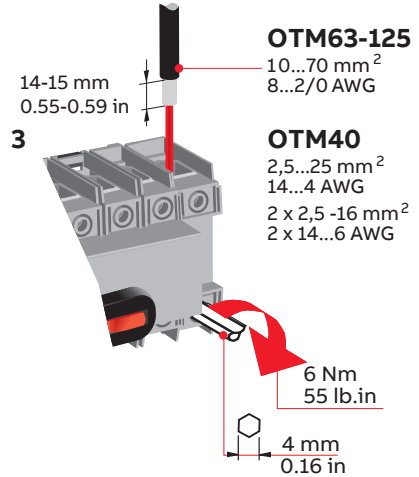
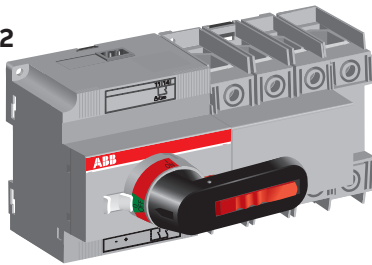


**OTPD60FP
OTPD125FP**



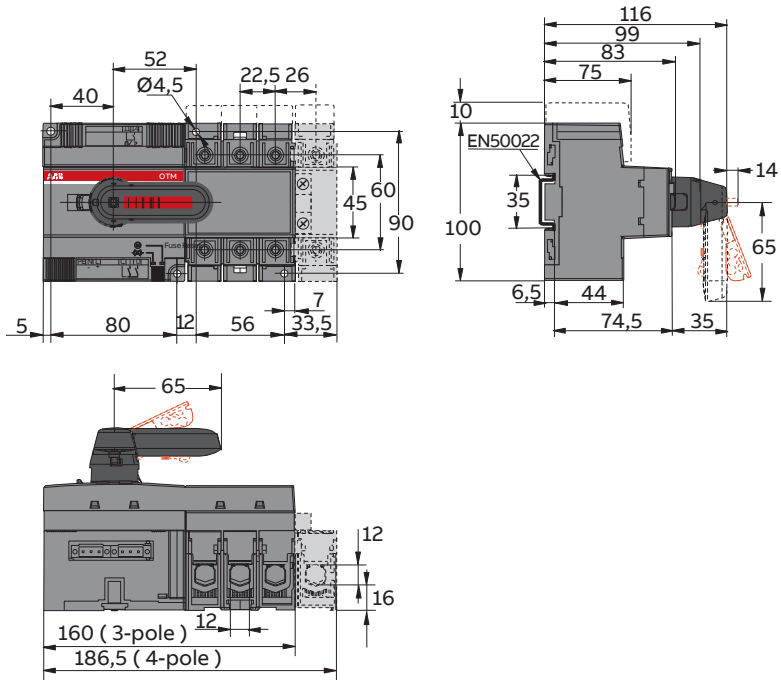
| | | | | |
|------------------|------------------|------------------|------------------|------------------|
| OTM40 | OTPS60FP | OTPL60FP | OTPN60FP | OTPE60FP |
| OTM63-125 | OTPS125FP | OTPL125FP | OTPN125FP | OTPE125FP |
| | (N)7 L4 | N | N | PE |
| | (N)8 T4 | N | N | PE |

2
A06143



Dimension drawings

OTM30-125F_C_





| | |
|-----------|---|
| BG | Внимание! Опасно напрежение! Да се монтира само от лице с електротехническа квалификация. |
| CN | 警告！电压危险！只能由专业电工进行安装。 |
| CZ | Varování! Nebezpečné napětí! Montáž smí provádět výhradně elektrotechnik! |
| DA | Advarsel! Farlig elektrisk spænding! Installation må kun foretages af personer med elektroteknisk ekspertise. |
| DE | Warnung! Gefährliche Spannung! Installation nur durch elektrotechnische Fachkraft. |
| EL | Προειδοποίηση! Υψηλή τάση! Η εγκατάσταση πρέπει να γίνεται μόνο από εξειδικευμένους ηλεκτροτεχνικούς. |
| EN | Warning! Hazardous voltage! Installation by person with electrotechnical expertise only. |
| ES | ¡Advertencia! ¡Tensión peligrosa! La instalación deberá ser realizada únicamente por electricistas especializados. |
| ET | Hoiatus! Ohtlik pinge. Paigaldada võib ainult elektrotehnika-alane ekspert. |
| FI | Varoitus! Vaarallinen jännite! Asennuksen voi tehdä vain sähköalan ammattihenkilö. |
| FR | Avertissement! Tension électrique dangereuse! Installation uniquement par des personnes qualifiées en électrotechnique. |
| HR | Upozorenje! Opasan napon! Postavljati smije samo elektrotehnički stručnjak. |
| HU | Figyelmeztetés! Veszélyes feszültség! Csak elektrotechnikai tapasztalattal rendelkező szakember helyezheti üzembe. |
| IE | Rabhadh! Voltas guaiseach! Ba chóir do dhuine ag a bhfuil saineolas leictréicniúil, agus an té sin amháin, é seo a shuiteáil. |
| IT | Avvertenza! Tensione pericolosa! Fare installare solo da un elettricista qualificato. |
| LT | Dėmesio! Pavojinga įtampa! Dirbti leidžiama tik elektrotechnikui patirties turintiems asmenims. |
| LV | Uzmanību! Bīstami - elektrība! Montāžas darbus drīkst veikt tikai personas, kurām ir atbilstošas elektrotehnikās zināšanas. |
| MT | Twissija! Vultagġ perikoluż! Għandu jiġi installat biss minn persuna b'kompetenza elettroteknika. |
| NL | Waarschuwing! Gevaarlijke spanning! Mag alleen geïnstalleerd worden door een deskundige elektrotechnicus. |
| NO | Advarsel! Farlig spenning! Montering skal kun utføres av kvalifiserte personer med elektrokompetanse. |
| PL | Ostrzeżenie! Niebezpieczne napięcie! Instalacji może dokonać wyłącznie osoba z fachową wiedzą w dziedzinie elektrotechniki. |
| PT | Aviso! Tensão perigosa! A instalação só deve ser realizada por um electricista especializado. |
| RO | Avvertizare! Tensiune periculoasă! Instalarea trebuie efectuată numai de către o persoană cu experiență în electrotehnică. |
| RU | Осторожно! Опасное напряжение! Монтаж должен выполняться только специалистом-электриком. |
| SE | Varning! Farlig spänning! Installation får endast utföras av en elektriker. |
| SK | Varovanie! Nebezpečné napätie! Montáž môže vykonávať iba skúsený elektrotechnik. |
| SL | Opozorilo! Nevarna napetost! Vgradnjo lahko opravi le oseba z elektrotehničnim strokovnim znanjem. |



Contact us

ABB Oy

Muottitie 2A, 65320

Vaasa, Finland

abb.com/lowvoltage