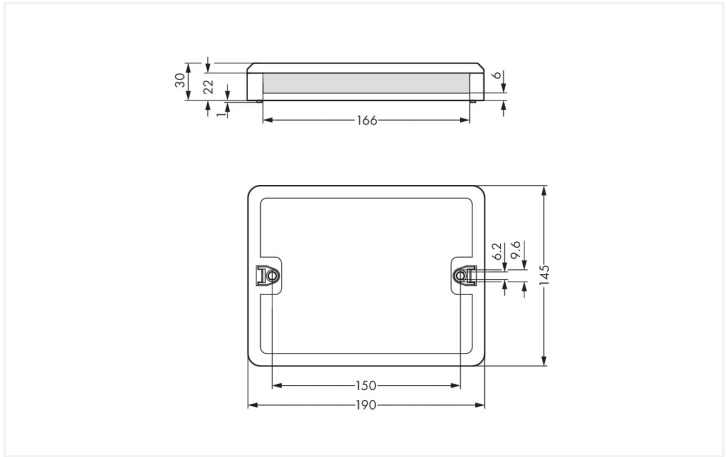


Color:   white



Dimensions in mm

Distribution box *WINSTA*® with protection type IP20

Implement your installation project without difficulty: The distribution box from the *WINSTA*® product line with a current rating of 20 A is the product of your choice for error-free electrical installation. With WAGO, you benefit from a large selection of expansions for the *WINSTA*® product line. The coding options reduce installation errors, allowing fast, secure wiring of all components. The distribution box is protected against ingress by solid objects in accordance with protection type IP20 (When mated: IP2xC (These compact connectors are not designed for use in open, easily accessible areas!)). I coding in blue is used to identify *WINSTA*® distribution boxes, which are used above all in automation of buildings for activating lighting. This distribution box can be employed for a voltage load of up to 20 A. Thus, it can also be used for high power loads.

Push-in CAGE CLAMP® spring pressure connection technology – pluggable installation instead of laborious screw connections!

The *WINSTA*® Pluggable Connection System is perfectly tailored to the very strict requirements of building installation. It makes electrical installation pluggable, and therefore faster, even more reliable, and error-free. Use of this pre-assembled system reduces assembly times and errors during installation at the construction site. Choose durability and quality – with protection against mismatching from WAGO makes the installation of electrical components substantially easier.

- protection against mismatching eliminates errors
- clear slot identification for easy commissioning
- products perfectly tailored to your requirements guarantee safe use
- with I coding for controlling light (DALI standard)
- quick replacement of defective units during ongoing operation

Electrical data						
Ratings per		IEC/EN 60664-1			Ratings per	
		III	III	II		
Overvoltage category		III	III	II	Overvoltage category	
Pollution degree		3	2	2	Pollution degree	
Nominal voltage		400 V	-	-	Nominal voltage	
Rated surge voltage		6 kV	-	-	Rated surge voltage	
Rated current		20 A	-	-	Rated current	

General information	
Note on contact resistance	approx. 1 mΩ contact resistance approx. 0.25 mΩ contact transition (plug/ socket)



Connection data

Connection 1		Connection 2	
Connection type 1	Input	Connection type	Output

Connection 3	
Connection type	Output

Physical data	
Width	190 mm / 7.48 inches
Height	30 mm / 1.181 inches
Depth	145 mm / 5.709 inches

Mechanical data	
Internal wiring	2.5 mm <sup>2</sup> 1.5 mm <sup>2</sup>
Use	DALI, Lighting Management
Coding	I
Mounting type	Wall, screw mount Installation on mounting plate
Protection type	IP20; When mated: IP2xC (These compact connectors are not designed for use in open, easily accessible areas!)

Plug-in connection	
Mismating protection	Yes
Note on mismating protection	All WINSTA® components are 100% protected against mismating when: a.) plugging different numbers of poles b.) plugging while rotated 180 c.) plugging while laterally staggered d.) plugging one pole
Locking of plug-in connection	Locking lever

Material data	
Note (material data)	<a href="#">Information on material specifications can be found here</a>
Color	white
Insulation material (main housing)	Polyamide (PA66)
Flammability class per UL94	V0
Contact material	Copper or copper alloy; surface-treated
Contact Plating	Tin
Fire load	7.781 MJ
Weight	388.8 g



Environmental requirements	
Processing temperature	-5 ... +40 °C
Continuous operating temperature	-35 ... +85 °C
Note on continuous operating temperature	Insulating parts for temperatures ≤ 105 °C

Commercial data	
ETIM 9.0	EC002567
ETIM 8.0	EC002567
PU (SPU)	1 pcs
Packaging type	Box
Country of origin	DE
GTIN	4055143940788
Customs tariff number	85366990990

Environmental Product Compliance	
RoHS Compliance Status	Compliant, No Exemption

Downloads

Environmental Product Compliance

Compliance Search


Environmental Product Compliance  
899-681/146-000

↓


1 Compatible Products

1.1 System counterpart

1.1.1 Cable assembly



**Item No.: 891-8982/006-102**  
pre-assembled interconnecting cable;  
Eca; Socket/plug; 2-pole; Cod. I; H05VV-F  
2 x 1.5 mm²; 1 m; 1,50 mm²; blue




**Item No.: 771-9985/006-102**  
pre-assembled interconnecting cable;  
Eca; Socket/plug; 5-pole; Cod. I; H05VV-F  
5G 1.5 mm²; 1 m; 1,50 mm²; blue

1.1.2 Female connector/socket




**Item No.: 770-1105**  
Socket; 5-pole; Cod. I; 4,00 mm²; blue

1.1.3 Male connector/plug



**Item No.: 890-1112**  
Plug; 2-pole; Cod. I; 1,50 mm²; blue



**Item No.: 770-1115**  
Plug; 5-pole; 4,00 mm²; blue



1.2 Optional Accessories

1.2.1 Installation

1.2.1.1 Mounting accessories



Item No.: 899-680  
Mounting plate; for distribution boxes; gray

Installation Notes

Installation

