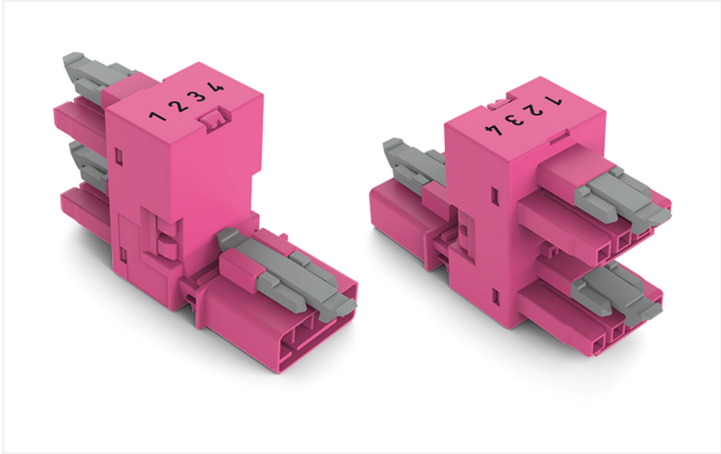


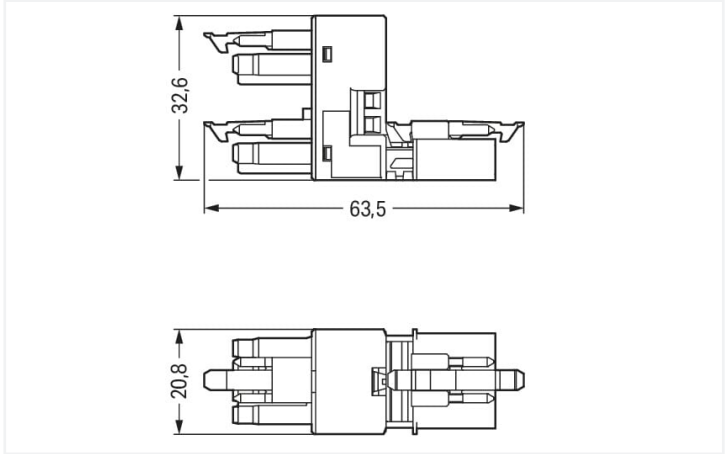
Data Sheet | Item Number: 890-1783

h-distribution connector; 4-pole; Cod. B; 1 input; 2 outputs; outputs on one side; 3 locking levers; for flying leads; pink

<https://www.wago.com/890-1783>



Color: ■ pink



Dimensions in mm

Distribution connector *WINSTA*® MINI 4-pole

Use effective pluggable connections instead of laborious screw connections: With the *WINSTA*® MINI distribution connector B coding. On PCBs, in control cabinets or for connecting lights – pluggable installation connectors from WAGO allow you to make connections according to an enormous variety of requirements in seconds. The coding options reduce installation errors, allowing fast, secure wiring of all components. Pluggable installation connectors with B coding from the *WINSTA*® MINI line are available in pink, light green, or gray, allowing you to distinguish different circuits, for example for light, pumps or, sun blinds. Your own pole marking is possible as well. *WINSTA*® MINI satisfies the demand for miniaturisation. Our smallest pluggable connection system is especially suitable for lights, for instance, since as a result of LED technology; due to complex systems, these offer less and less space for the connection technology.

Lower costs through fast commissioning and elimination of service expenses – solutions from *WINSTA*® MINI

*WINSTA*® is the pluggable connection system that is optimally tailored to the strict requirements of electrical installation. It allows fast, secure and, above all, error-free installation of components and cables. Choose quality and durability – with locking lever from WAGO makes the electrical installation of electrical components substantially easier.

- effective protection against mismatching
- easy tool-free operation, a wide range of coding options
- with B coding for controllers such as lighting fixtures and sun blinds
- exact dimensions
- fast, secure installation

Notes	
Variants:	Other pole markings Other versions (or variants) can be requested from WAGO Sales or configured at <a href="https://configurator.wago.com/">https://configurator.wago.com/</a> .

Electrical data				
Ratings per		IEC/EN 60664-1		
Overvoltage category		III	III	II
Pollution degree		3	2	2
Nominal voltage		400 V	-	-
Rated surge voltage		6 kV	-	-
Rated current		16 A	-	-

Ratings per IEC/EN – Notes	
Rated current (note)	13 A for 3-pole load 10 A for 4-pole load



Approvals per		UL 1977
Rated voltage		600 V
Rated current		12 A

General information	
Note on contact resistance	approx. 1 mΩ of contact resistance approx. 0.25 mΩ contact transition plug/ socket

Connection data	
Total number of potentials	4
Connection 1	
Pole number	4

Physical data	
Pin spacing	4.4 mm / 0.173 inches
Width	20.8 mm / 0.819 inches
Height	32.65 mm / 1.285 inches
Depth	63.5 mm / 2.5 inches

Mechanical data	
Use	Control technology
Coding	B
Variable coding	No
Marking	1 2 3 4
Potential marking	1 2 3 4
Mating force of a plug-in connection	Approx. 20 ... 70 N (depending on pole number)
Retention force of a plug-in connection	When locked: > 80 N
Unmating force of a plug-in connection	Unlocked: approx. 20 ... 70 N (depending on pole number)
Number of mating cycles	200, without resistive load
Type of distribution box	h-distribution connector, outputs at one end
Protection type	IP20; IP40 when mated
Suitable	for flying leads

Plug-in connection	
Mismating protection	Yes
Note on mismating protection	All WINSTA® components are 100% protected against mismating when: a.) plugging different numbers of poles b.) plugging while rotated 180 c.) plugging while laterally staggered d.) plugging one pole
Locking lever	Yes
Locking of plug-in connection	Locking lever
Note on locking system	All connectors for mounted installations (snap-in versions for lighting fixtures or devices, all types of PCB and distribution connectors) are factory-equipped with locking levers to ensure plugs and sockets are securely locked. Additional locking levers are only required for flying leads (plug/socket).
Number of locking levers	3



Material data		
Note (material data)		<a href="#">Information on material specifications can be found here</a>
Color		pink
Material group		I
Insulation material (main housing)		Polyamide (PA66)
Flammability class per UL94		V0
Contact material		Copper or copper alloy; surface-treated
Contact Plating		Tin
Fire load		0.166 MJ
Weight		16.1 g

Environmental requirements		
Processing temperature		-5 ... +40 °C
Continuous operating temperature		-35 ... +85 °C
Note on continuous operating temperature		Insulating parts for temperatures ≤ 105 °C

Commercial data		
eCl@ss 10.0		27-44-06-03
eCl@ss 9.0		27-44-06-03
ETIM 9.0		EC002567
ETIM 8.0		EC002567
PU (SPU)		50 pcs
Packaging type		Box
Country of origin		DE
GTIN		4055143252027
Customs tariff number		85366990990

Environmental Product Compliance		
RoHS Compliance Status		Compliant,No Exemption

Downloads

Environmental Product Compliance

Compliance Search

Environmental Product Compliance 890-1783

↓

Documentation				
Bid Text				
890-1783	19.02.2019	xml	2.87 KB	↓
890-1783	03.12.2014	doc	23.00 KB	↓



CAD/CAE-Data	
CAD data	CAE data
2D/3D Models 890-1783	ZUKEN Portal 890-1783

1 Compatible Products

1.1 System counterpart

1.1.1 Cable assembly



**Item No.: 891-8994/205-107**  
pre-assembled connecting cable; Eca; Plug/open-ended; 4-pole; Cod. B; Control cable 4 x 1.0 mm<sup>2</sup>; 1 m; 1,00 mm<sup>2</sup>; pink

**Item No.: 891-8994/105-107**  
pre-assembled connecting cable; Eca; Socket/open-ended; 4-pole; Cod. B; Control cable 4 x 1.0 mm<sup>2</sup>; 1 m; 1,00 mm<sup>2</sup>; pink

**Item No.: 891-8994/005-107**  
pre-assembled interconnecting cable; Eca; Socket/plug; 4-pole; Cod. B; Control cable 4 x 1.0 mm<sup>2</sup>; 1 m; 1,00 mm<sup>2</sup>; pink

1.1.2 Female connector/socket



**Item No.: 890-284**  
Socket; 4-pole; Cod. B; 1,50 mm<sup>2</sup>; pink

1.1.3 Male connector/plug



**Item No.: 890-294**  
Plug; 4-pole; 1,50 mm<sup>2</sup>; pink

1.2 Required Accessories

1.2.1 Installation

1.2.1.1 Mounting accessories

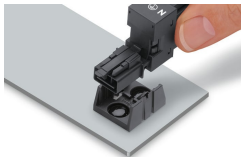


**Item No.: 890-624**  
Mounting plate; 4-pole; for distribution connectors; Plastic; black

**Item No.: 890-674**  
Mounting plate; 4-pole; for distribution connectors; Plastic; white

Installation Notes

Installation



Secure the mounting plate via pins.

