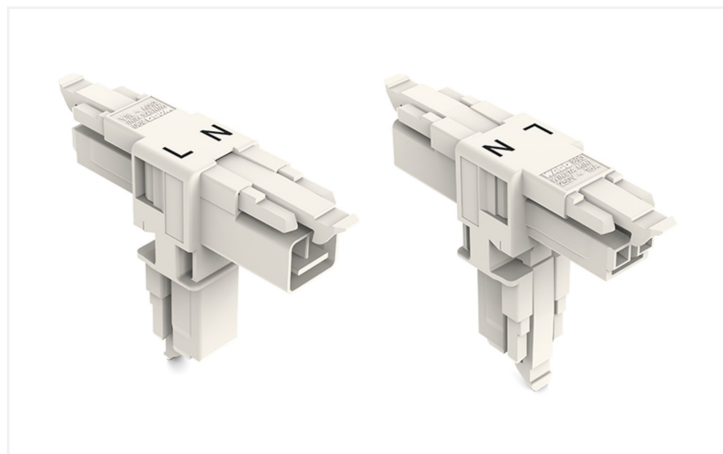


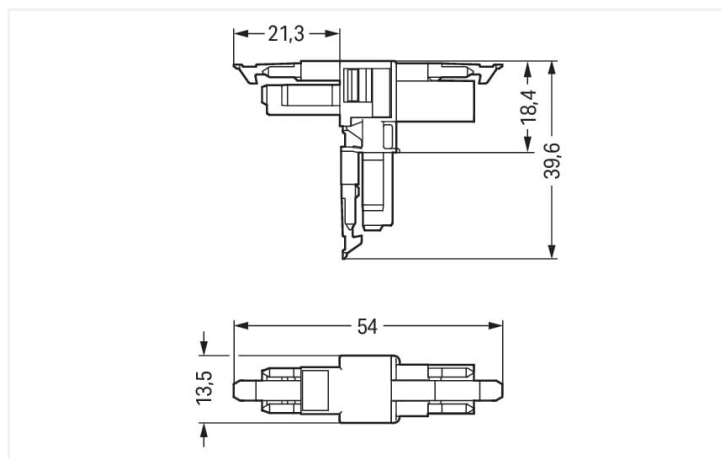
## Data Sheet | Item Number: 890-1665

T-distribution connector; 2-pole; Cod. A; 1 input; 2 outputs; 3 locking levers; for flying leads; white

<https://www.wago.com/890-1665>



Color: ■ white



Dimensions in mm

### Distribution connector *WINSTA®* MINI with protection against mismatching

The *WINSTA®* MINI distribution connector with protection type IP20 allows installation of solid and fine-stranded conductors. Whether on PCBs, in control cabinets or for connecting lights – pluggable installation connectors from WAGO allow you to establish connections according to an enormous variety of requirements in no time flat. The color coding and mechanical coding of the pluggable installation connector ensure error-free installation of the individual components – including protection against mismatching. The *WINSTA®* MINI pluggable installation connector with A coding in white or black is usually used for general mains applications in power distribution. *WINSTA®* MINI follows the trend towards miniaturisation. Our smallest pluggable connection system is especially suitable for lights, for example, since due to LED technology, these offer less and less space for the connection technology.

Lower costs through fast commissioning and elimination of service expenses – solutions from *WINSTA®* MINI

The *WINSTA®* Pluggable Connection System allows pluggable electrical installation. This significantly reduces the need for servicing and lowers costs. Now you can also reduce installation costs without compromising safety and quality: with protection type IP20 eliminates the need for servicing and prevents unnecessary downtime.

- effective protection against mismatching
- consistent IP40 protection
- suitable for any application
- ready for immediate use
- rapid, structured electrical installation



Electrical data

Ratings per IEC/EN 60664-1				Approvals per UL 1977	
Overvoltage category	III	III	II	Rated voltage	600 V
Pollution degree	3	2	2	Rated current	14 A
Nominal voltage	250 V	-	-		
Rated surge voltage	4 kV	-	-		
Rated current	16 A	-	-		

General information	
Note on contact resistance	approx. 1 mΩ of contact resistance approx. 0.25 mΩ contact transition plug/ socket

Connection data

Total number of potentials	2	Connection 1	
		Pole number	2

Physical data

Pin spacing	4.4 mm / 0.173 inches
Width	13.5 mm / 0.531 inches
Height	39.6 mm / 1.559 inches
Depth	54 mm / 2.122 inches

Mechanical data

Use	General mains applications
Coding	A
Variable coding	No
Marking	L N
Potential marking	L N
Mating force of a plug-in connection	Approx. 20 ... 70 N (depending on pole number)
Retention force of a plug-in connection	When locked: > 80 N
Unmating force of a plug-in connection	Unlocked: approx. 20 ... 70 N (depending on pole number)
Number of mating cycles	200, without resistive load
Type of distribution box	T-distribution connector
Protection type	IP20; IP40 when mated
Suitable	for flying leads

Plug-in connection

Mismating protection	Yes
Note on mismating protection	All <i>WINSTA</i> ® components are 100% protected against mismating when: a.) plugging different numbers of poles b.) plugging while rotated 180 c.) plugging while laterally staggered d.) plugging one pole
Locking lever	Yes
Locking of plug-in connection	Locking lever
Note on locking system	All connectors for mounted installations (snap-in versions for lighting fixtures or devices, all types of PCB and distribution connectors) are factory-equipped with locking levers to ensure plugs and sockets are securely locked. Additional locking levers are only required for flying leads (plug/socket).
Number of locking levers	3





Material data		
Note (material data)		<a href="#">Information on material specifications can be found here</a>
Color		white
Material group		I
Insulation material (main housing)		Polyamide (PA66)
Flammability class per UL94		V0
Contact material		Copper or copper alloy; surface-treated
Contact Plating		Tin
Fire load		0.216 MJ
Weight		6.3 g

Environmental requirements		
Processing temperature		-5 ... +40 °C
Continuous operating temperature		-35 ... +85 °C
Note on continuous operating temperature		Insulating parts for temperatures ≤ 105 °C

Commercial data		
Product Group		20 (Winsta)
eCl@ss 10.0		27-44-06-03
eCl@ss 9.0		27-44-06-03
ETIM 9.0		EC002567
ETIM 8.0		EC002567
PU (SPU)		25 pcs
Packaging type		Box
Country of origin		DE
GTIN		4045454547660
Customs tariff number		85366990990

Environmental Product Compliance		
RoHS Compliance Status		Compliant, No Exemption

### Approvals / Certificates

General approvals			Declarations of conformity and manufacturer's declarations		
 			Approval	Standard	Certificate Name
Approval	Standard	Certificate Name	EU-Declaration of Confor- mity WAGO GmbH & Co. KG	-	-
CCA DEKRA Certification B.V.	EN 61535	71-123231	UK-Declaration of Confor- mity WAGO GmbH & Co. KG	-	-
CCA DEKRA Certification B.V.	IEC 61535	NL-85020			
cURus Underwriters Laboratories Inc.	UL 1977	E45171			



Approvals for marine applications



Approval	Standard	Certificate Name
ABS American Bureau of Ship- ping	Steel Vessel Rules	19-HG1869855-PDA
DNV GL Det Norske Veritas, Ger- manischer Lloyd	-	TAE00001Z6
LR Lloyds Register	EN 61535	08/20047 (E2)

Downloads

Environmental Product Compliance

Compliance Search
Environmental Product Compliance 890-1665



Documentation

Bid Text			
890-1665	19.02.2019	xml 2.83 KB	
890-1665	03.12.2014	doc 22.50 KB	

CAD/CAE-Data

CAD data
2D/3D Models 890-1665

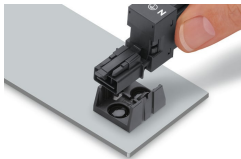


CAE data
EPLAN Data Portal 890-1665
WSCAD Universe 890-1665
ZUKEN Portal 890-1665



Installation Notes

Installation



Secure the mounting plate via pins.

