

2TMD041700D0051 | 29.06.2017

# Product manual ABB-Welcome

PC management software  
ABB-Welcome



1	Notes on the instruction manual .....	4
2	Safety .....	4
3	Intended use .....	4
4	Environment .....	5
4.1	ABB devices .....	5
5	Product description .....	6
5.1	Feature .....	6
6	Application.....	7
6.1	2-wire adaptor in common part .....	7
6.2	2 wire adaptor in building part .....	8
7	Installation .....	9
7.1	Preparation .....	9
7.1.1	Scenario1: 2-wire adaptor and PC are directly connected .....	9
7.1.2	Scenario 2: PC and 2 wire adaptor are connected via a network.....	12
7.2	PC management software installation .....	16
8	Commission .....	19
8.1	Topology of typical applicaiton .....	19
8.2	Preparation .....	20
8.3	Engineering configuration .....	22
8.3.1	Building unit configuration.....	22
8.3.3	Gate station configuration.....	23
8.3.4	Outdoor station configuration.....	24
8.3.5	Network guard unit configuration .....	25
8.3.6	Building guard unit configuration .....	25
8.3.7	Community info setting and positioning .....	26
8.4	Resident information configuration.....	27
8.4.2	Add the resident information one by one .....	28
8.4.3	Import user name from file .....	29
8.4.5	Import logic address from file.....	31
8.4.6	Resident information management .....	32
8.4.7	Read user name .....	33
8.4.8	Read logic address .....	34
8.5	Card configuration .....	35
8.5.1	Register card one by one.....	35
8.5.3	Import card number from file.....	36
8.5.4	Card list management.....	37
8.5.5	Read card .....	38
8.6	System log record .....	39
8.6.1	Alarm and unlock log .....	39
8.7	Lift control configuration .....	41
8.8	Welcome message for outdoor station .....	41
8.9	Database management.....	42
8.9.1	Backup database .....	42
8.9.2	Restore database.....	42
8.10	Device remote operation .....	43
8.10.1	Remote upgrade .....	43

Contact us ..... 44

## 1 Notes on the instruction manual

Please read through this manual carefully and observe the information it contains. This will assist you in preventing injuries and damage to property, and ensure both reliable operation and a long service life for the device.

Please keep this manual in a safe place.

If you pass the device on, also pass on this manual along with it.

ABB accepts no liability for any failure to observe the instructions in this manual.

## 2 Safety



### Warning

Electric voltage

Dangerous currents flow through the body when coming into direct or indirect contact with live components.

This can result in electric shock, burns or even death.

- Disconnect the mains power supply prior to installation and/or disassembly!
- Permit work on the 110-240 V supply system to be performed only by specialist staff!

## 3 Intended use

This device supports to connect PC with management software into 2-wire DES system. It supports centrally management of user information including user name, logic address and card information. It can also configure lift control function and customized welcome message on the outdoor station.

## 4 Environment



### Consider the protection of the environment!

Used electric and electronic devices must not be disposed of with household waste.

- The device contains valuable raw materials that can be recycled. Therefore, dispose of the device at the appropriate collecting facility.

### 4.1 ABB devices

All packaging materials and devices from ABB bear the markings and test seals for proper disposal. Always dispose of the packing materials and electric devices and their components via an authorized collection facility or disposal company.

ABB products meet the legal requirements, in particular the laws governing electronic and electrical devices and the REACH ordinance.

(EU-Directive 2002/96/EG WEEE and 2002/95/EG RoHS)

(EU-REACH ordinance and law for the implementation of the ordinance (EG) No.1907/2006)

## 5 Product description

### 5.1 Feature

- 2-wire adaptor supports to connect PC with management software into 2-wire DES system
- PC management software supports centralized management of user card no. /user names/ logic addresses, registration/deletion/change.
- PC management software records system logs, e.g unlock log, SOS log.
- PC management software supports to configure lift control modules.



Fig. 1

## 6 Application

### 6.1 2-wire adaptor in common part

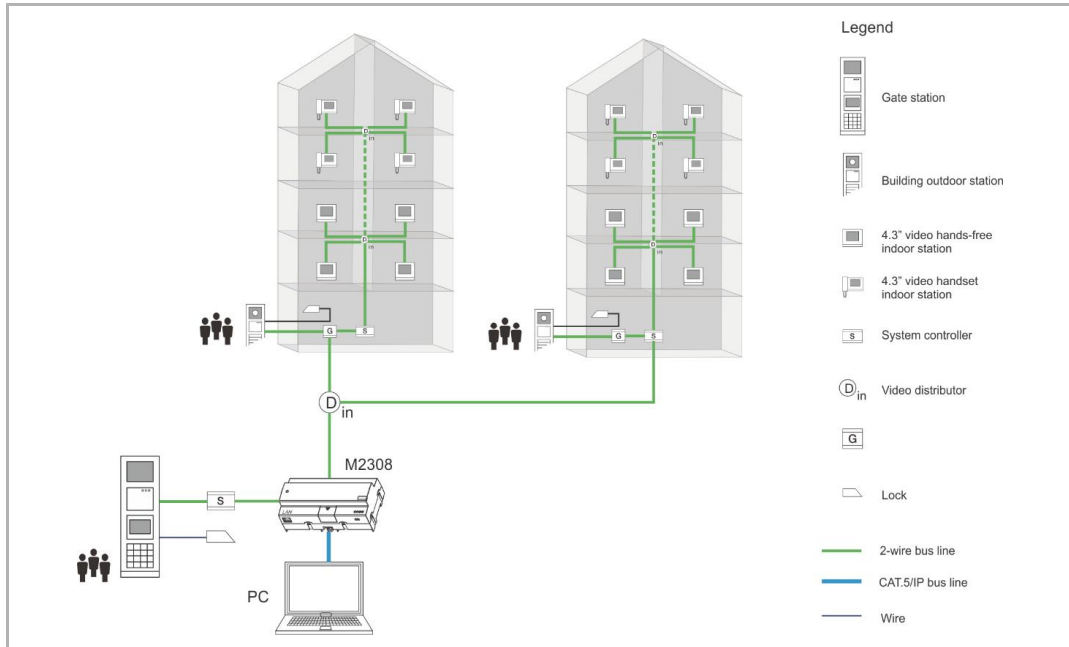


Fig. 2

If 2-wire adaptor is placed in common part, it can manage all data of this project.

6.2 2 wire adaptor in building part

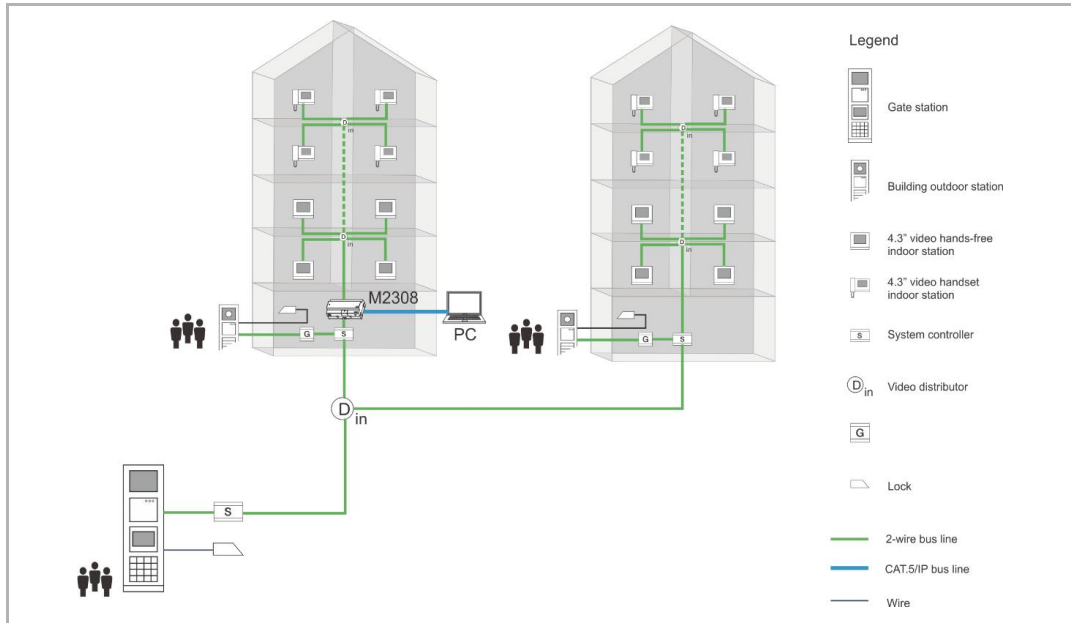


Fig. 3

If 2-wire adaptor is placed within building part, it can only manage the data of this building.



## 7 Installation

### 7.1 Preparation

#### 7.1.1 Scenario 1: 2-wire adaptor and PC are directly connected

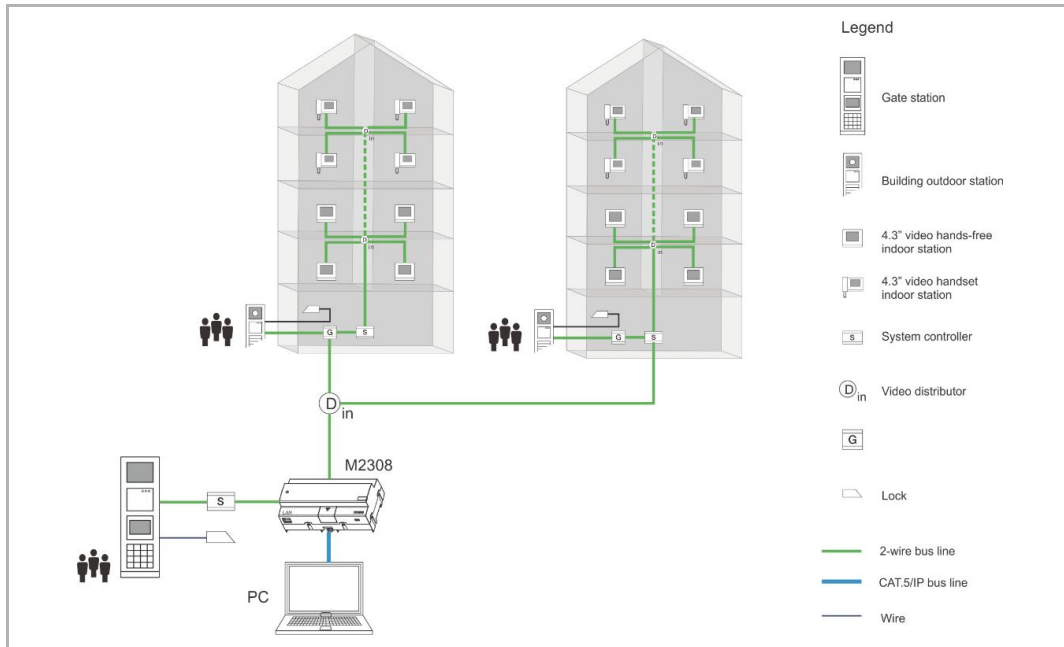


Fig. 4

#### Step 1: Set IP address of PC

Click "Internet Protocol Version 4 (TCP/IPv4)"--"Properties

Input IP address and subnet mask like below: )

IP address: 10.0.0.1

Subnet mask: 255.0.0.0

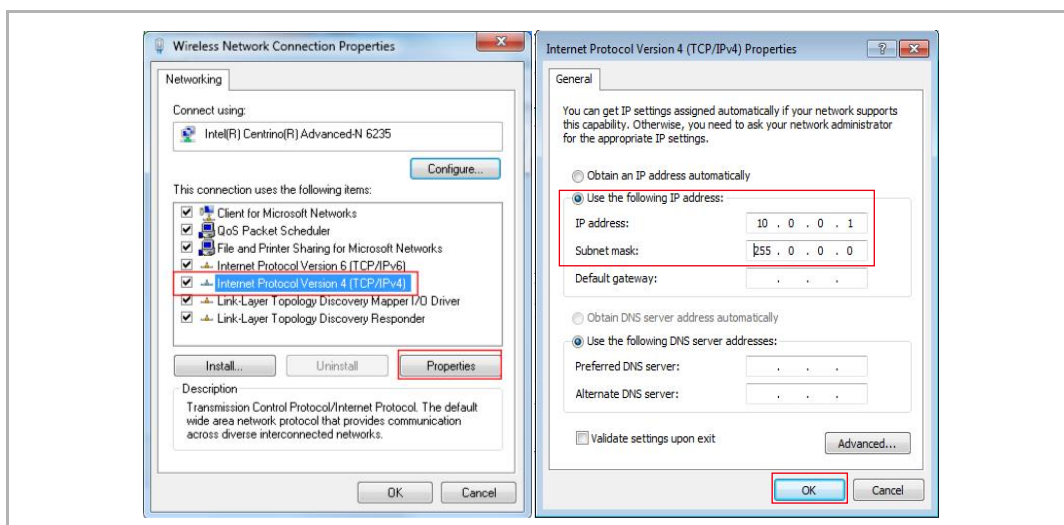


Fig. 5

## Step 2: Set network connection of PC

Disable the wireless network.

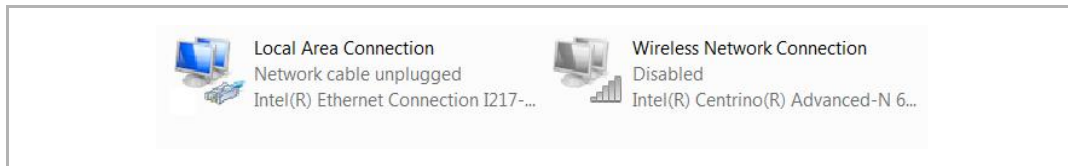


Fig. 6

## Step 3: Enable ports of PC firewall

Make sure the following ports are enabled by PC firewall (Window Firewall or 3rd-party anti-virus software):

TCP: 7000, 7005, 7006, 7070, 7554, 7660, 7777, 8554

UDP: 3333, 3339, 4444, 6999.

## Example of setting Window firewall

Following is an example for setting Window firewall.

When starting the software the first time, Window firewall will pop up a notification. Confirm the path name includes "abb-welcome", then click "Allow access".

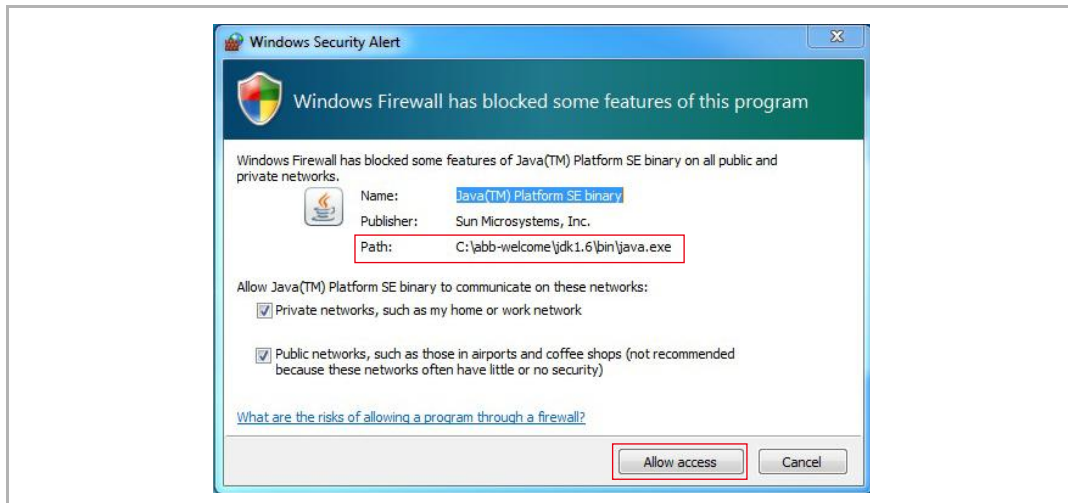


Fig. 7

It is recommend to check "Windows Firewall Inbound Rules" to see if the application is enable by Windows firewall successfully.

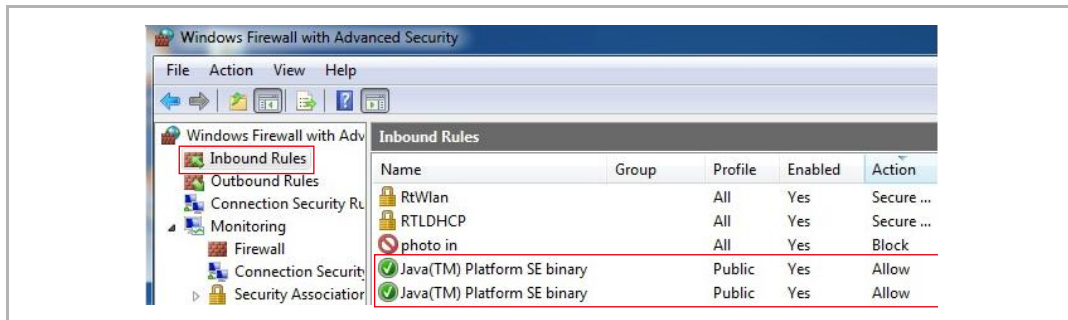


Fig. 8



### Note

Please consult an qualified IT professional if above standard ports are still blocked by firewall, which might cause management software doesn't work.

7.1.2 Scenario 2: PC and 2 wire adaptor are connected via a network

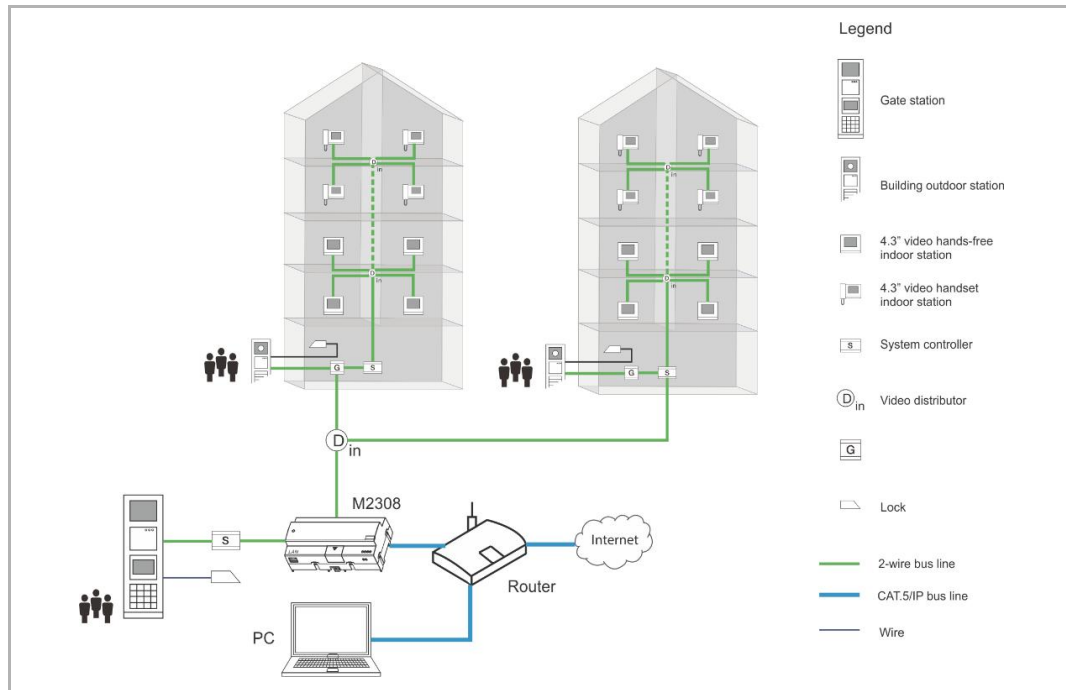


Fig. 9

**Step 1: PC and 2 wire adaptor are connected via a network**

**Precondition:** PC must be set to obtain IP address automatically.

**Destination:** To set static IP address with exist IP address information

Double click network connection icon to enter the "Network Connection Status" window. Click "Detail".

On "Network Connection Status" window. It will show IP details got from the router. These IP information will be used later.

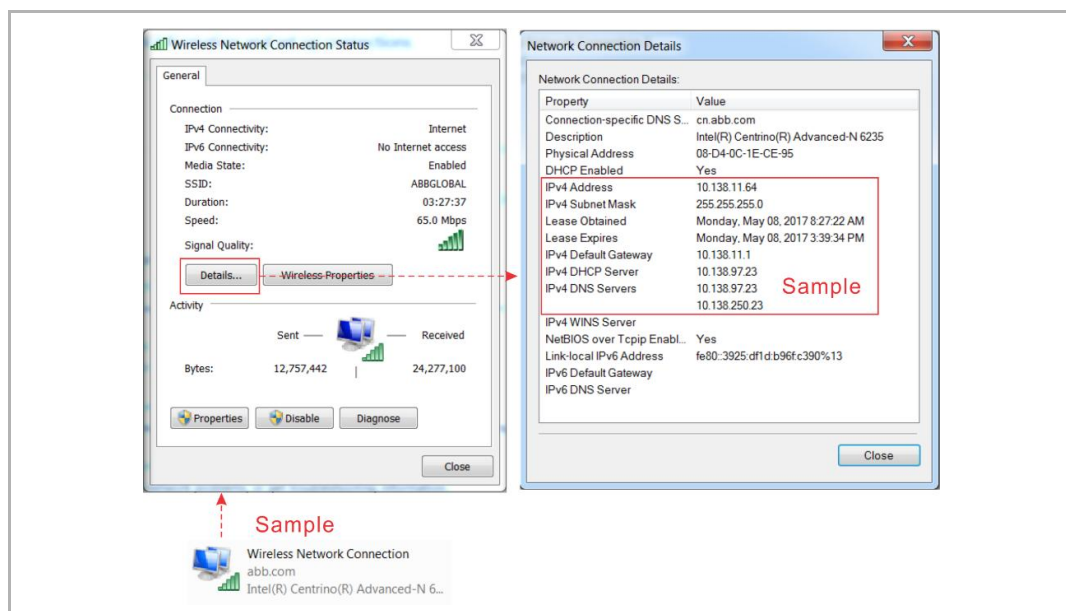


Fig. 10

Back to "Network Connection Status" window, click "Properties".

On "Network Connection Properties" window, select "TCP/IPv4", click "Properties".

On "TCP/IPv4 Properties" window, please select "Use the following IP address", then input IP information you recorded before.

At last, please click "Advance"

On the pop-up window, input new IP address and subnet mask.

IP address: 10.0.0.1

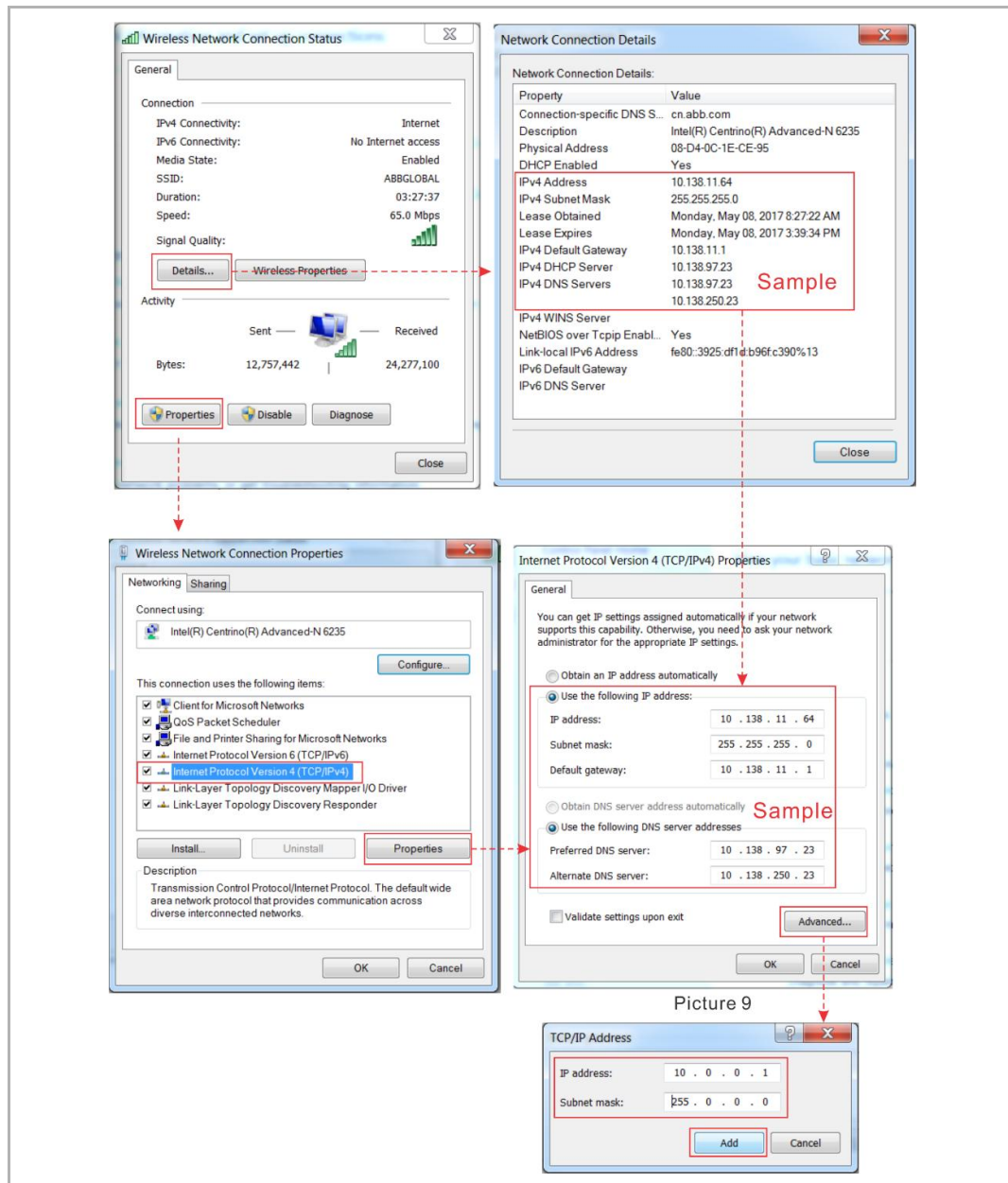


Fig. 11

### Step 2: Set network connection of PC

If PC connects to router by wireless network connection. Disable "Local Area Connection".

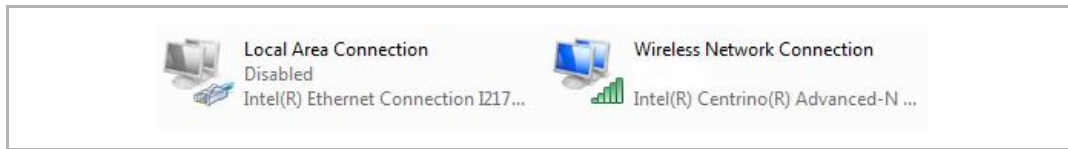


Fig. 12

If PC connects to router by cable. Disable "Wireless Network connection".



Fig. 13

### Step 3: Enable ports of PC firewall

Make sure the following ports are enabled by PC firewall (Window Firewall or 3rd-party anti-virus software):

TCP: 7000, 7005, 7006, 7070, 7554, 7660, 7777, 8554

UDP: 3333, 3339, 4444, 6999.

### Example of setting Window firewall

Following is an example for setting Window firewall.

When starting the software the first time, Window firewall will pop up a notification. Confirm the path name includes "abb-welcome", then click "Allow access".

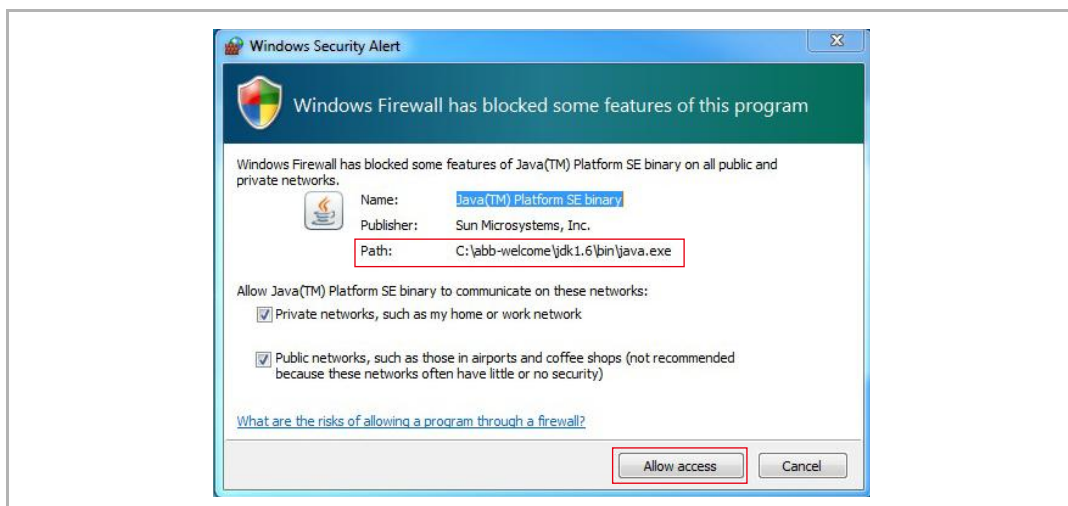


Fig. 14

It is recommend to check "Windows Firewall Inbound Rules" to see if the application is enable by Windows firewall successfully.

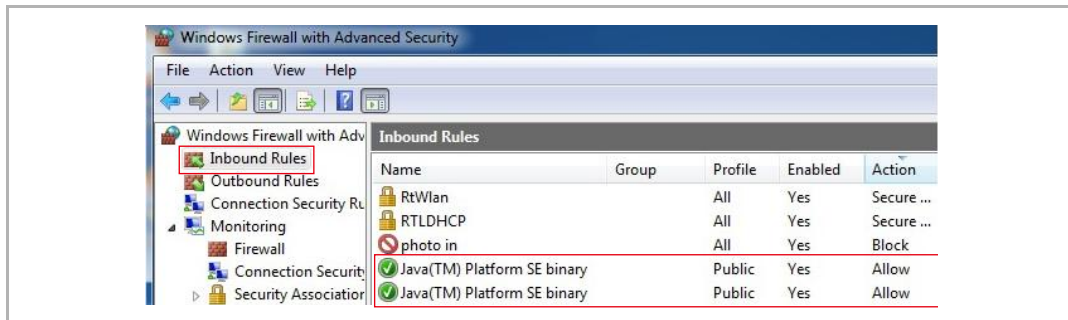


Fig. 15



### Note

Please consult an qualified IT professional if above standard ports are still blocked by firewall, which might cause management software doesn't work.

## 7.2 PC management software installation

Follow the process, you can install the software successfully.

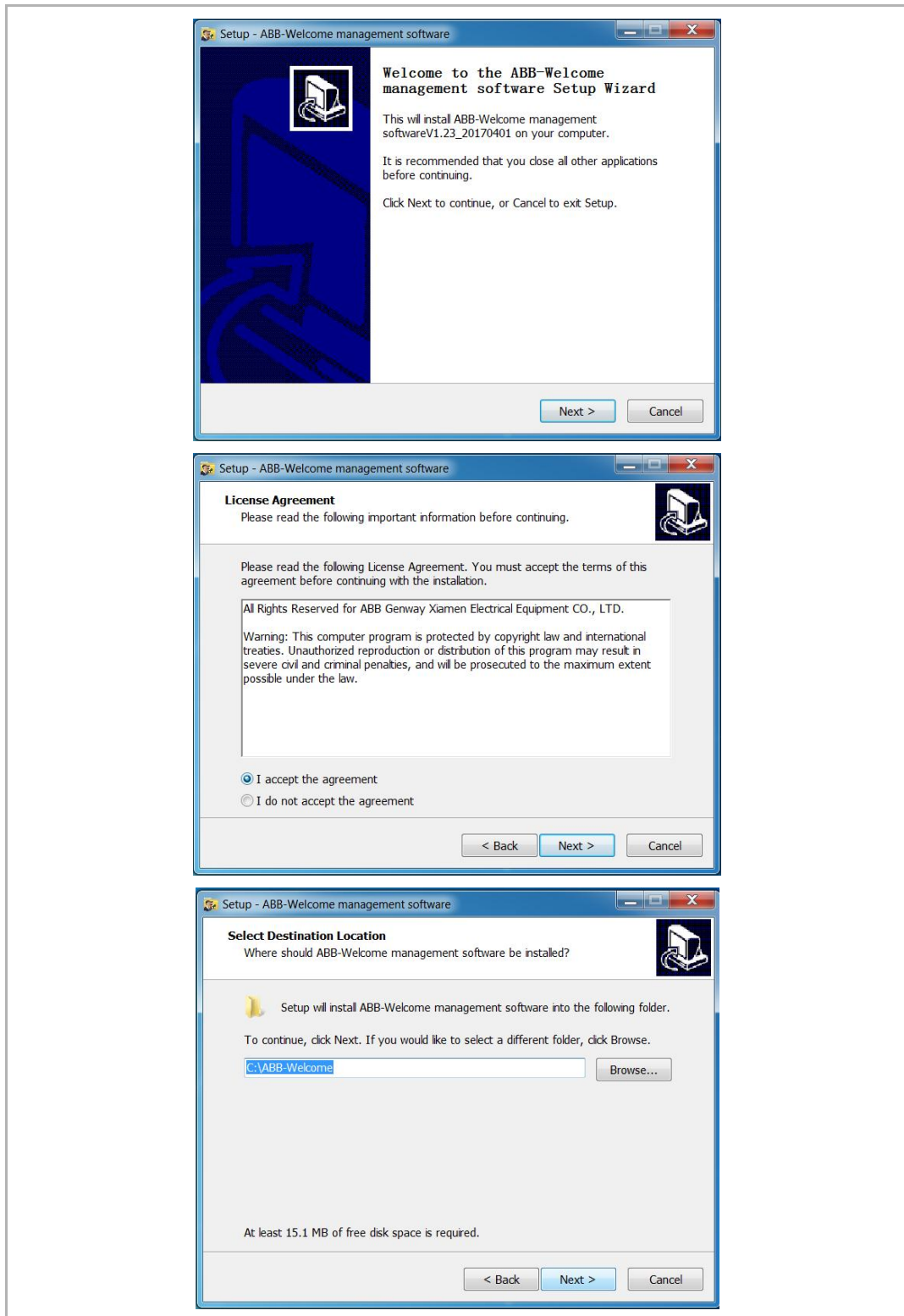


Fig. 16



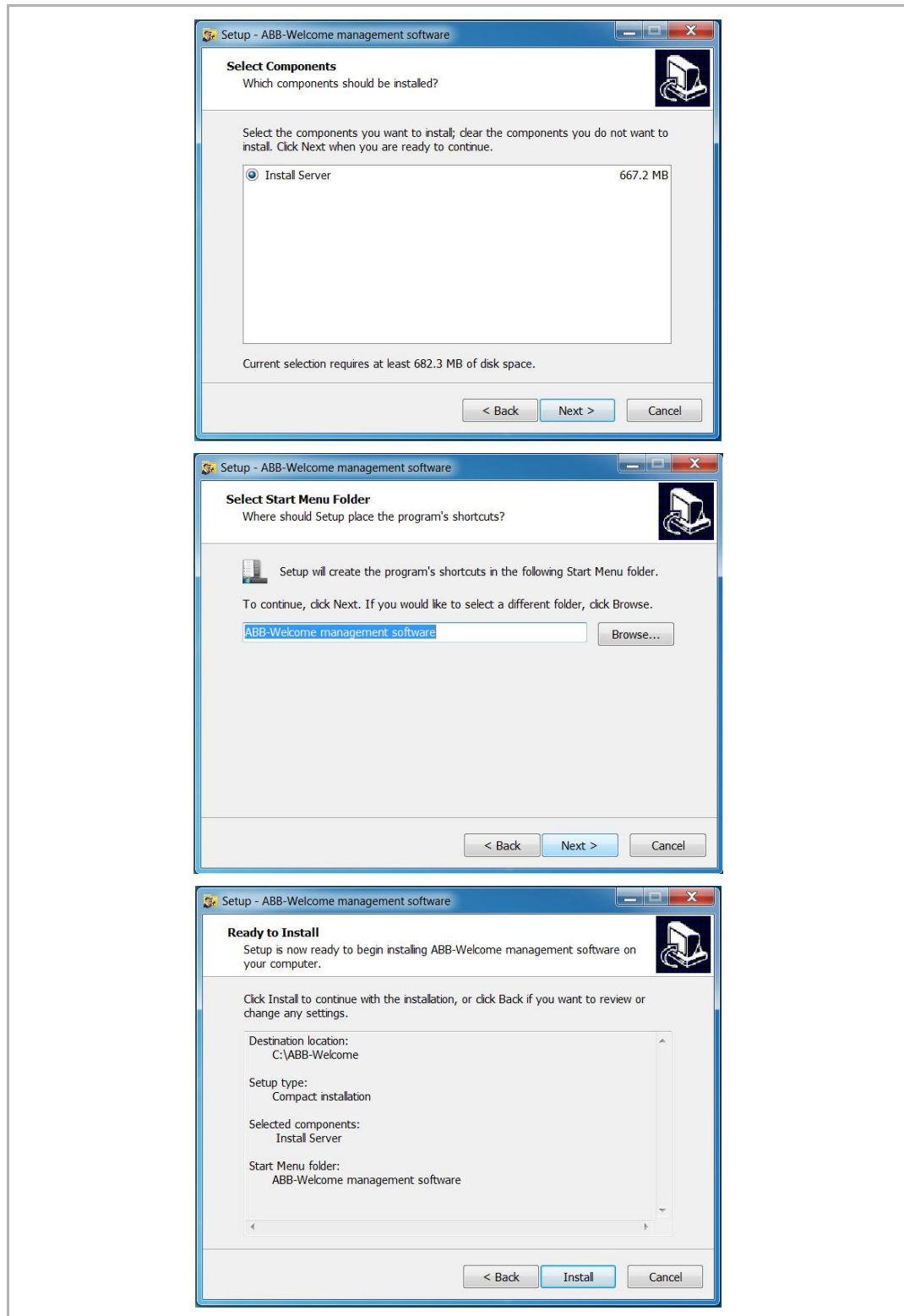


Fig. 17

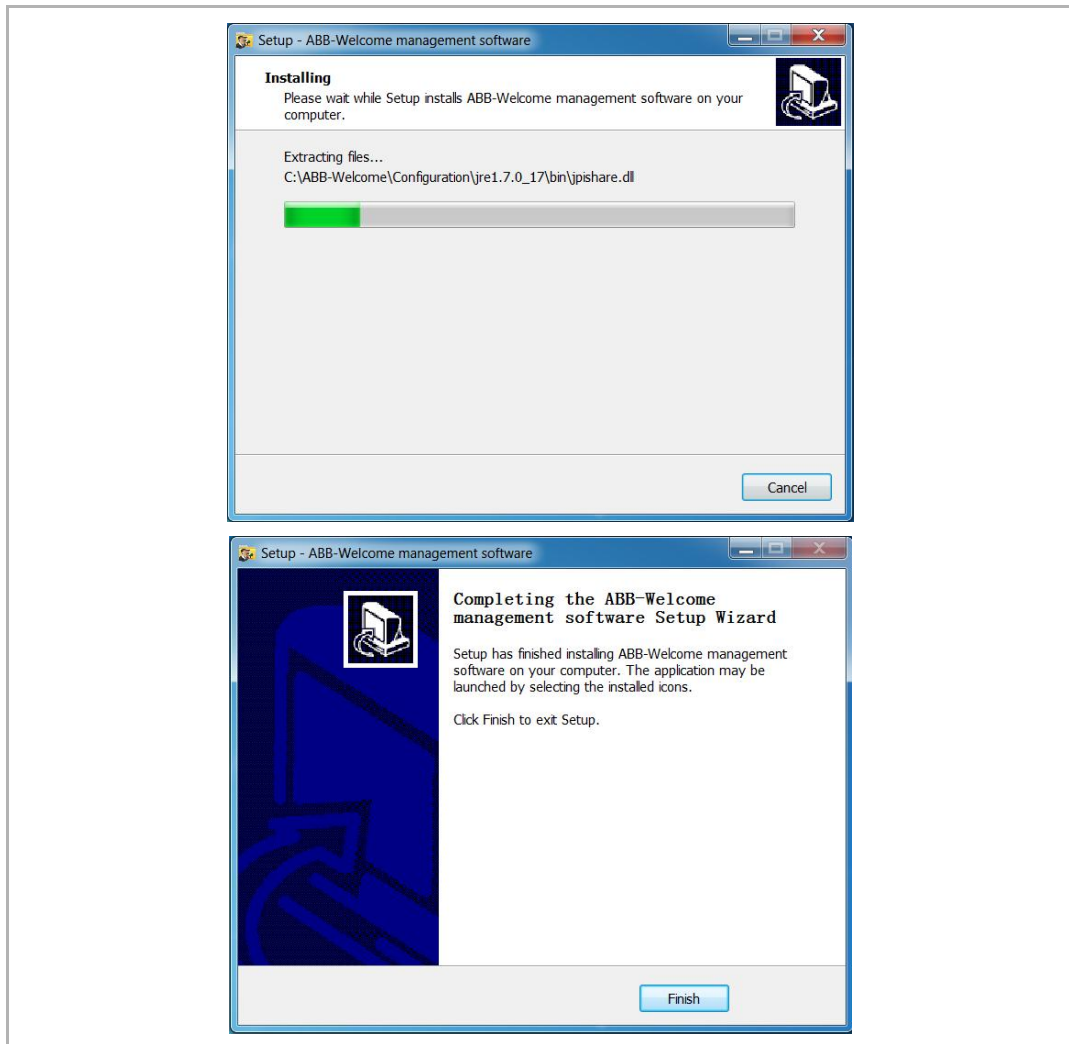


Fig. 18

Double click the shortcut of the software to enter.

User name: **admin**

Password: **123456** (default)



Fig. 19

# 8 Commission

Let's follow a typical example to learn how to use the software.

## 8.1 Topology of typical applicaiton

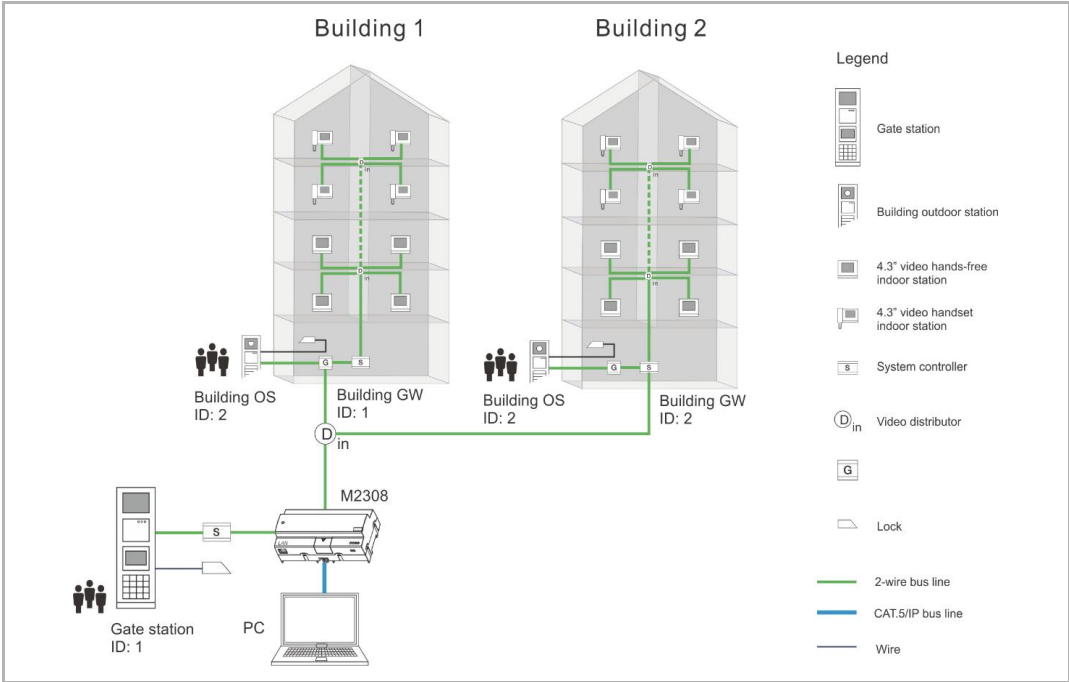


Fig. 20

### Information of Building 1 (example)

	B	C	D	E	F	G	H	I
1	<b>ABB Welcome Management Software</b>							
2	<b>Physical Address</b>	<b>User Name</b>	<b>Logic Address</b>	<b>Card 1</b>	<b>Card 2</b>	<b>Card 3</b>	<b>Card 4</b>	<b>Card 5</b>
3	01001	User 1	1	0011822147	0011823743	0011824156		
4	01002	User 2	2	0011824675				
5	01003	User 3	3	0011826797				
6	01004	User 4	4	0011832134				
7	01005	User 5	5	0118377675				
8	01006	User 6	6	0011837813				
9	01007	User 7	7	0011840851				
10	01008	User 8	8	0011841554				
11								
12								
13								
14								

Fig. 21

8.2 Preparation

Return to home page

Press "Desktop" to return home page quickly.



Fig. 22

Modify password

It is recommend to change password at the first time to use the software.

Default password is 123456.



Fig. 23

**Find product manual**

Click to "Manual" to download product manual.

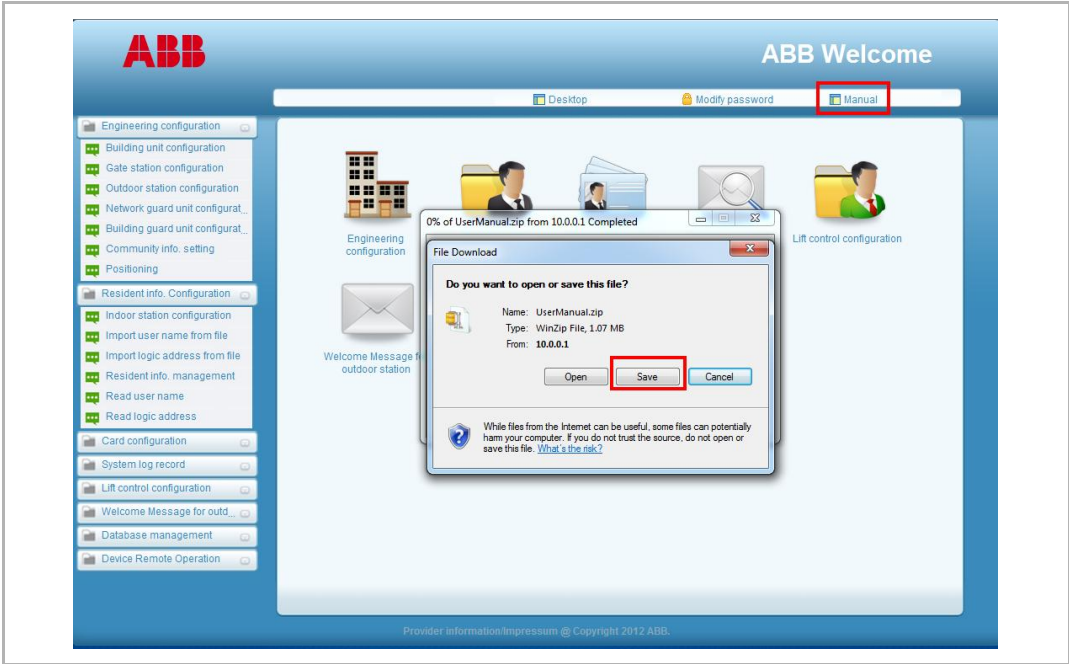


Fig. 24

**Database backup**

It is recommend to backup an original database before commission. If you want to reset the data from the begin, you only need to restore your original database.

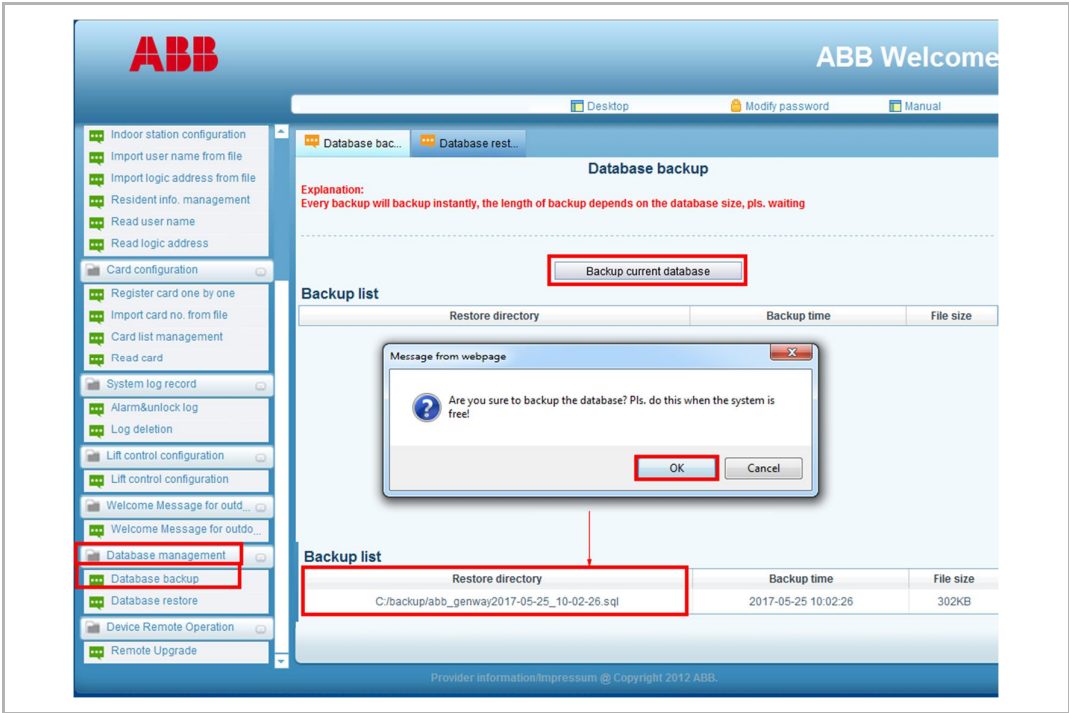


Fig. 25

8.3 Engineering configuration

8.3.1 Building unit configuration

Device number of gate station could be set as 1-60.

If only one single building existing in the project, you can choose "Single building" to add. In this scenario, there is no access to add other units or other network devices, e.g. gate station.

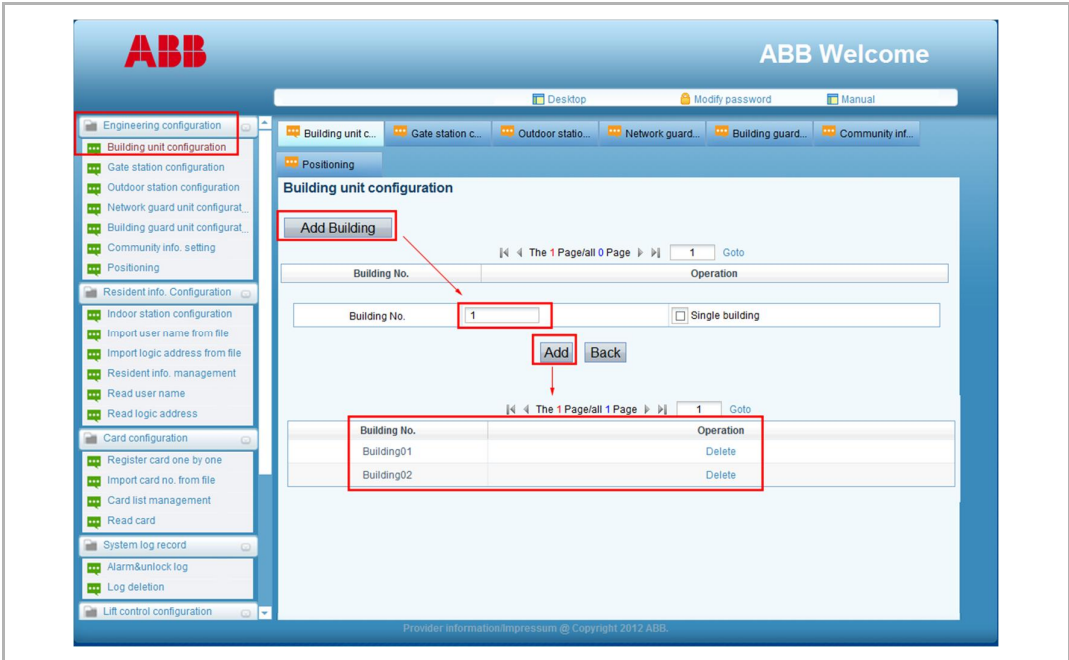


Fig. 26

### 8.3.3 Gate station configuration

Device number of gate station is set as 1-9. And gate station number + outdoor station number  $\leq 9$ . These numbers should be no duplicate.

It is recommended to set gate station numbers earlier than building outdoor station numbers. For example, gate station numbers are set as 1, 2, 3, then outdoor station numbers need to be set as 4-9.

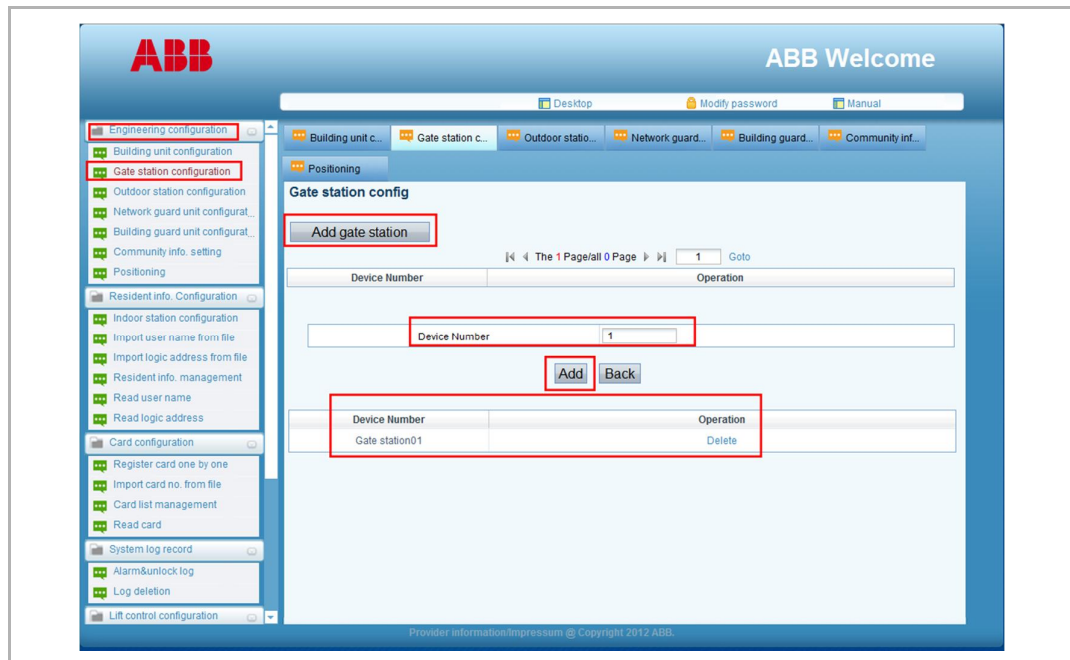


Fig. 27

### 8.3.4 Outdoor station configuration

Outdoor station number can be set as 1-9. And gate station number + outdoor station number  $\leq 9$ . These numbers should be no duplicate. If the same number, a wrong prompt will appear.

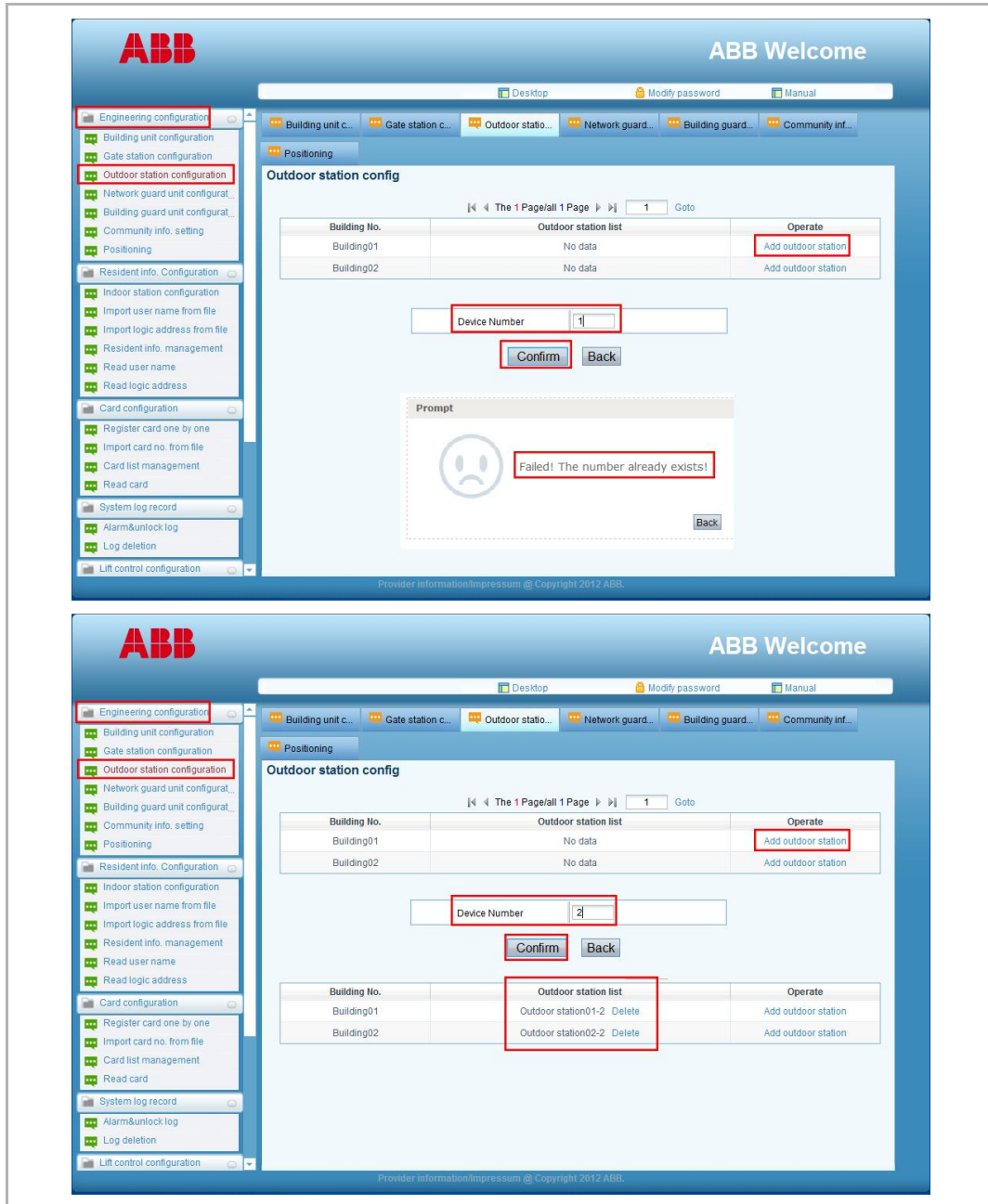


Fig. 28



### 8.3.5 Network guard unit configuration

Network guard unit number can be set as 1-9.

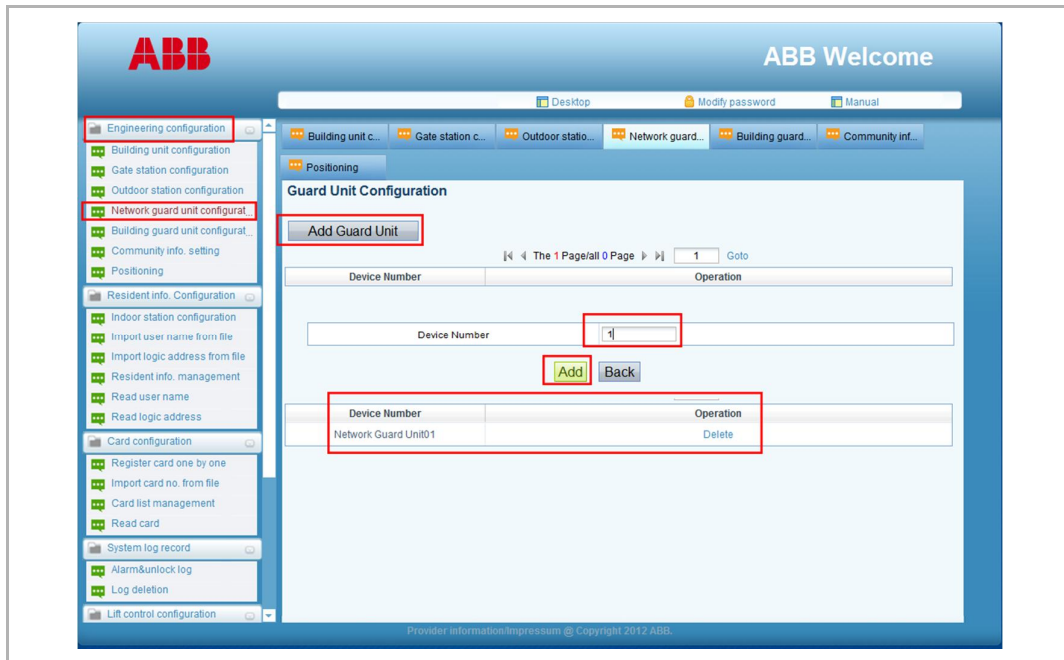


Fig. 29

### 8.3.6 Building guard unit configuration

Each building, building guard unit number can be set from 1-9.



Fig. 30

### 8.3.7 Community info setting and positioning

It is recommended to upload the community map to software and locate each building to a position. After setting, when alarm, the alarm notification will show the position. (The recommended resolution of map is 600 \* 431 pixel).



Fig. 31

8.4 Resident information configuration

Gate stations, outdoor stations and guard units can share the resident information. The resident information can be inputted one by one in the software, it also can be imported from an excel file or read from the devices directly.

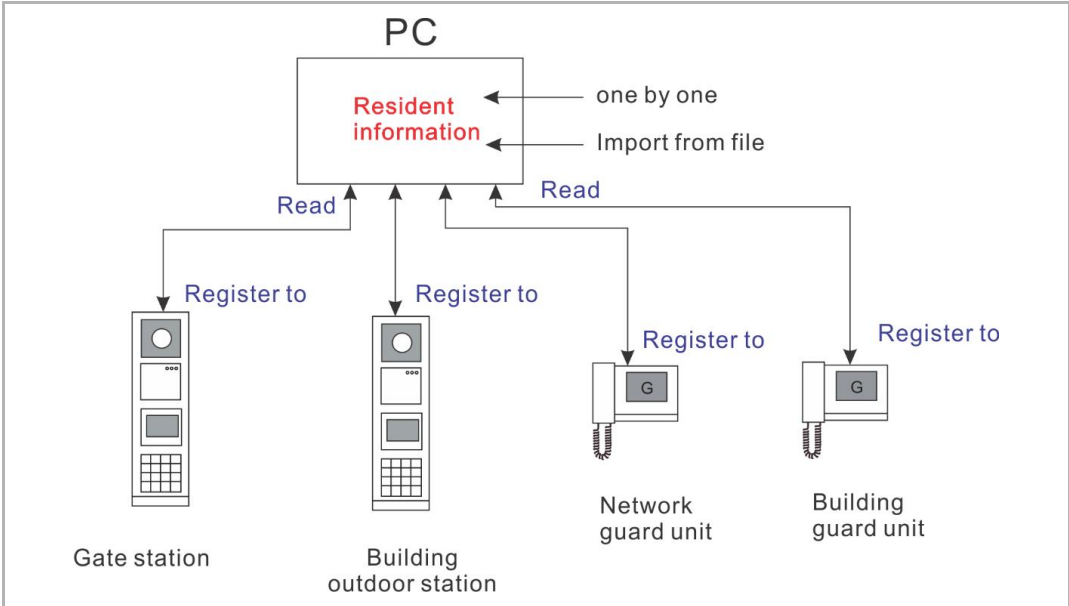


Fig. 32

### 8.4.2 Add the resident information one by one

Physical address can be set as 1-250.

Click "Review apartment" to see the information of exist apartments.

Click "Delete" will delete a exist record.

If you want to modify the existing resident information, please delete the existing info, and add a new one to the related apartment.

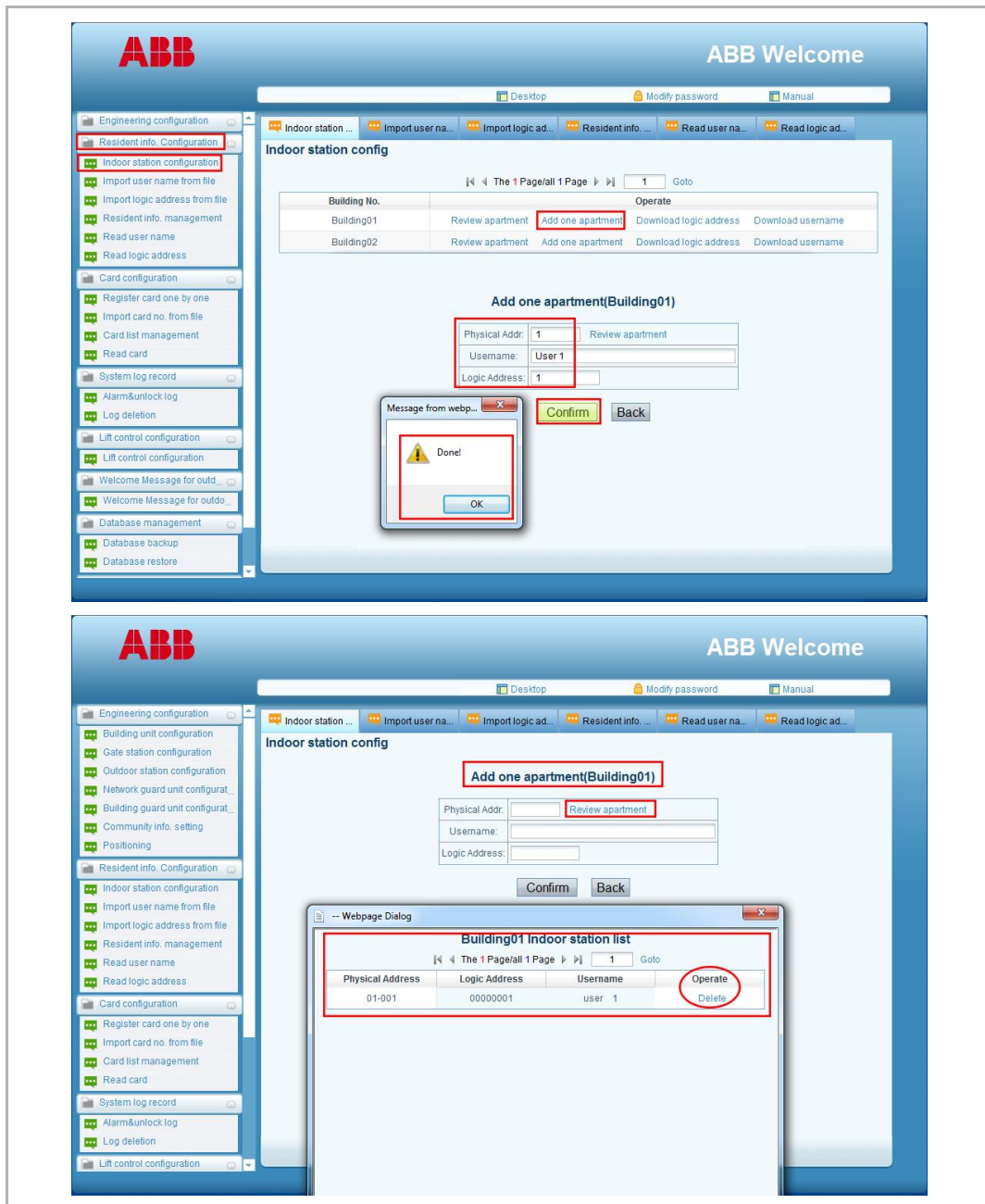


Fig. 33

8.4.3 Import user name from file

If the first time, it is recommended to download the template to PC.  
Then fill the information to the table.

The screenshot shows the ABB Welcome Management Software interface. The 'Import user name from file' option is selected in the left-hand menu. A 'File Download' dialog box is open, showing a file named 'template.zip' (56.4 KB) from '10.0.0.1'. The 'Save' button is highlighted. Below the screenshot is a table with columns for Physical Address, User Name, Logic Address, and Card 1 through Card 5.

	B	C	D	E	F	G	H	I
1								
2								
3		01001	User 1	1	0011822147	0011823743	0011824156	
4		01002	User 2	2	0011824675			
5		01003	User 3	3	0011826797			
6		01004	User 4	4	0011832134			
7		01005	User 5	5	0118377675			
8		01006	User 6	6	0011837813			
9		01007	User 7	7	0011840851			
10		01008	User 8	8	0011841554			
11								
12								
13								
14								

Fig. 34

### Import user name from file

Follow the steps below to import user name from file and register to gate stations, outdoor stations or guard units. It is recommended to clear username before registration.

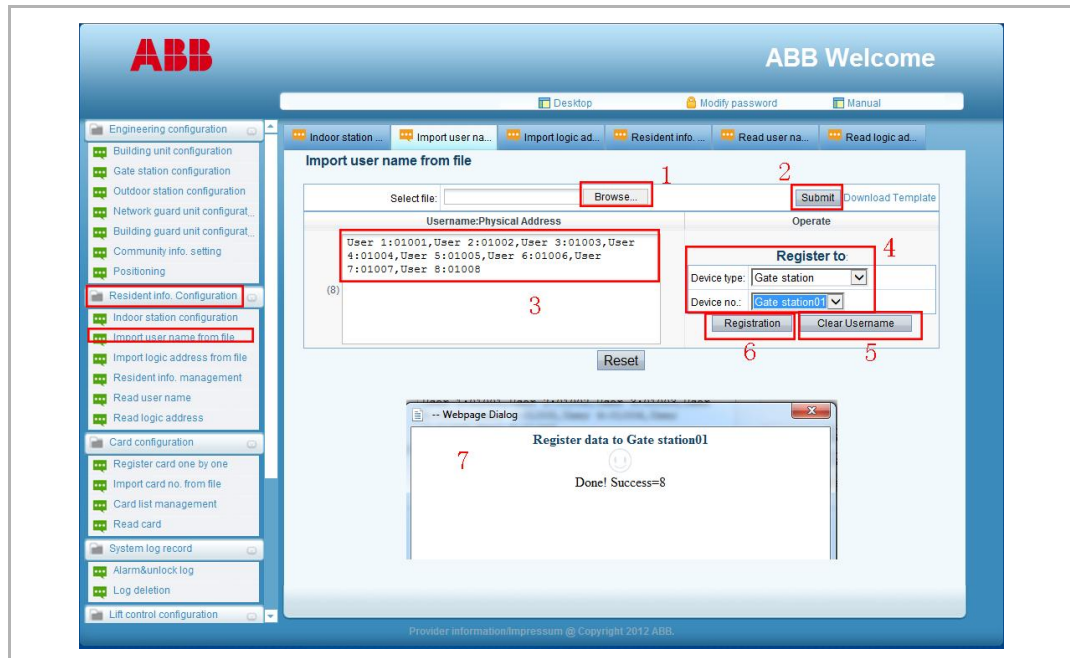


Fig. 35

### 8.4.5 Import logic address from file

Follow the steps below to import logic address from file and register to gate stations, outdoor stations or guard units. It is recommended to clear logic address before registration.

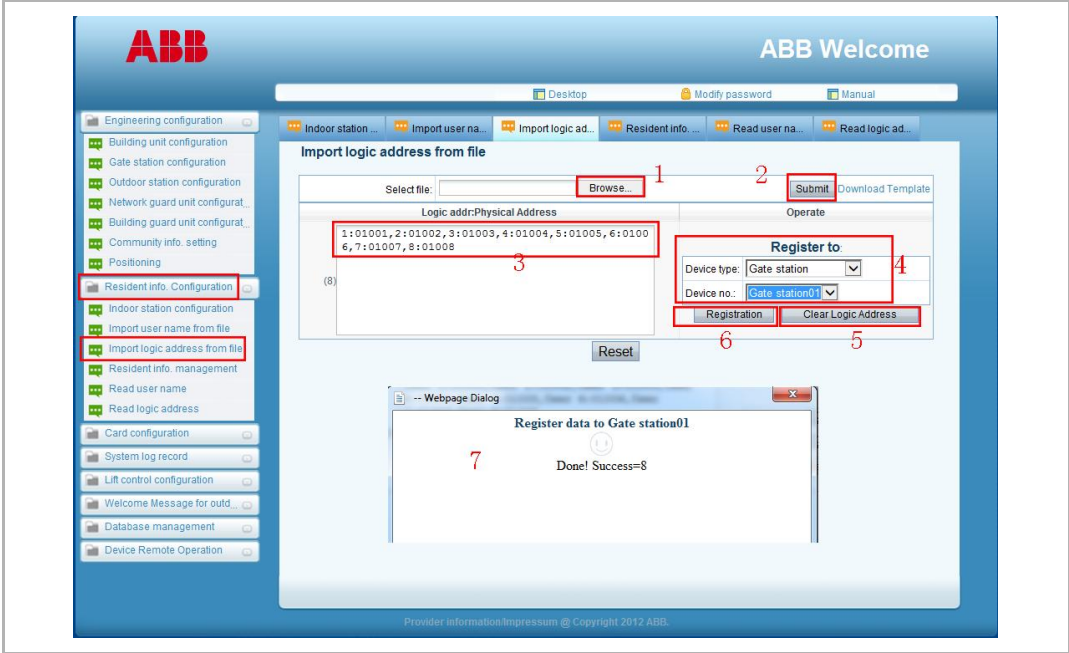


Fig. 36

8.4.6 Resident information management

Follow the steps below to check if the resident information has been registered into the devices. Click "Logout" to delete the resident information from the designated device. Click "Registration" to register the resident information into the device again.

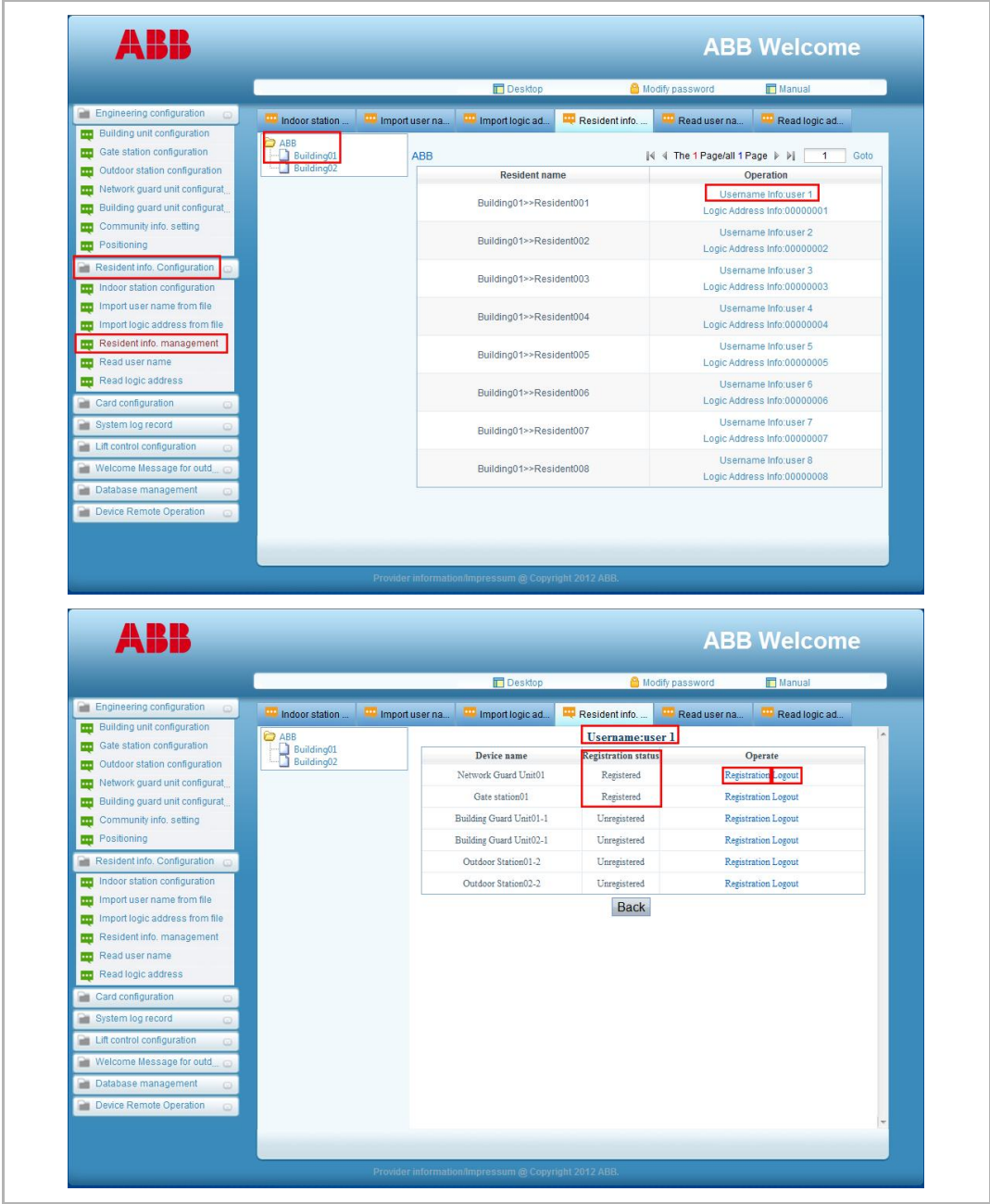


Fig. 37



### 8.4.7 Read user name

Follow the steps below to import user name from other devices like gate stations, outdoor stations and guard units.

Press "Check" to see details and register resident information to other devices.

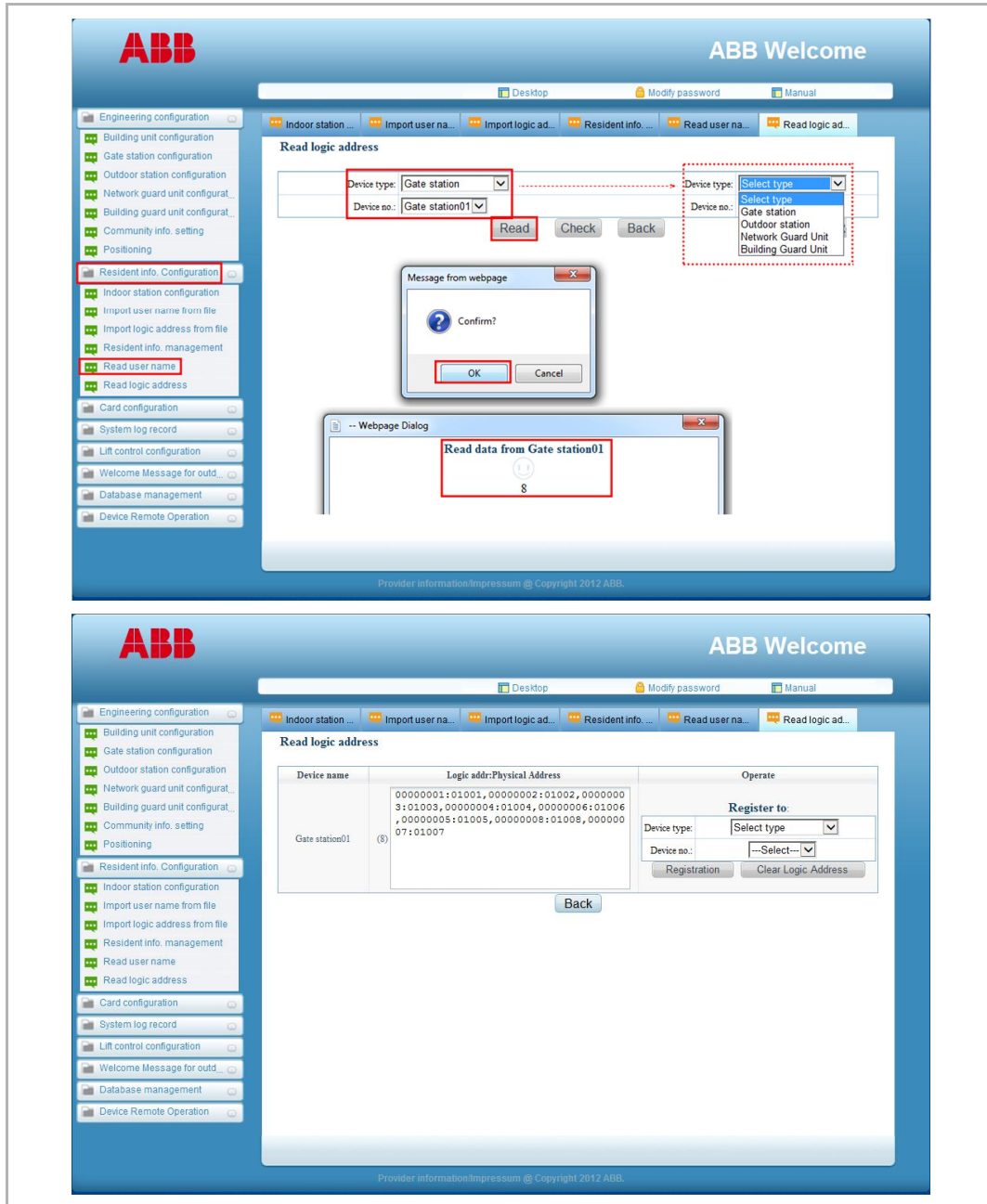


Fig. 38

### 8.4.8 Read logic address

The operation is the same to read user name.

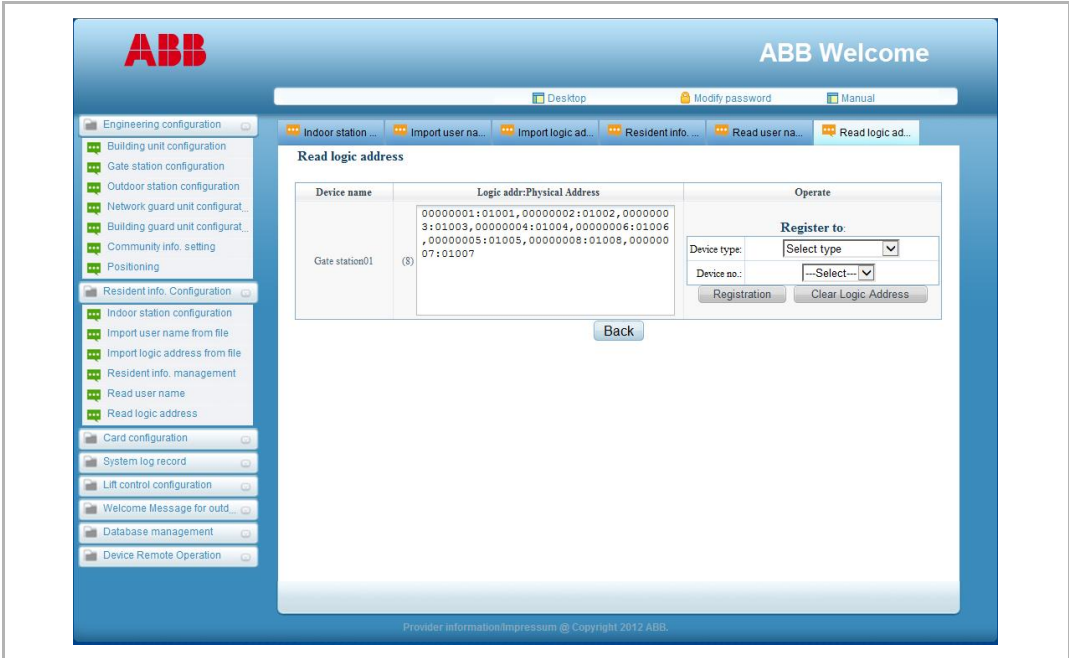


Fig. 39

8.5 Card configuration

8.5.1 Register card one by one

Follow the steps below to register card one by one. There is a device list to choose devices to register the card.

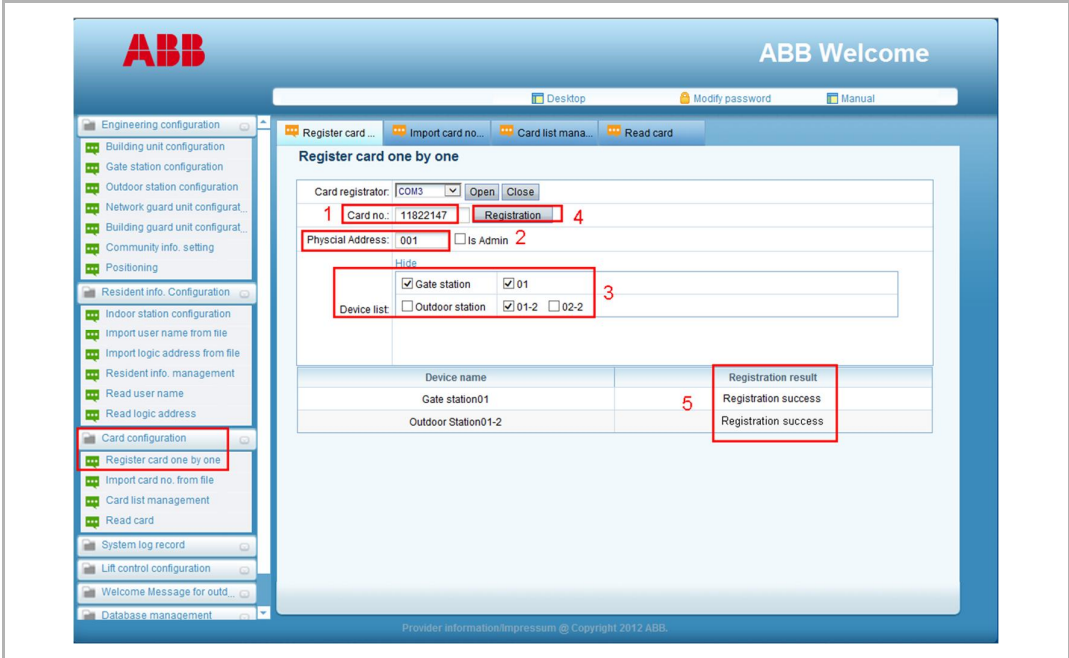


Fig. 40

### 8.5.3 Import card number from file

Follow the steps below to import card numbers from file and register to other devices like gate station, outdoor station and guard units.



Fig. 41

### 8.5.4 Card list management

**Deactivate/Reactivate:** to disable/enable the function of the cards, and not change the registration status. If the card is registered to multi devices. It will affect all devices.

For example, you could give a private card to a milkmen. This card needs register to gate station and multi outdoor stations.

Each 7 a.m., activate the card, 2 hours later deactivate the card.

**Logout/Registration:** to delete/registration the card information from the device. It only affect the designated device.

**Delete:** only delete card information from PC software, not delete from the device.

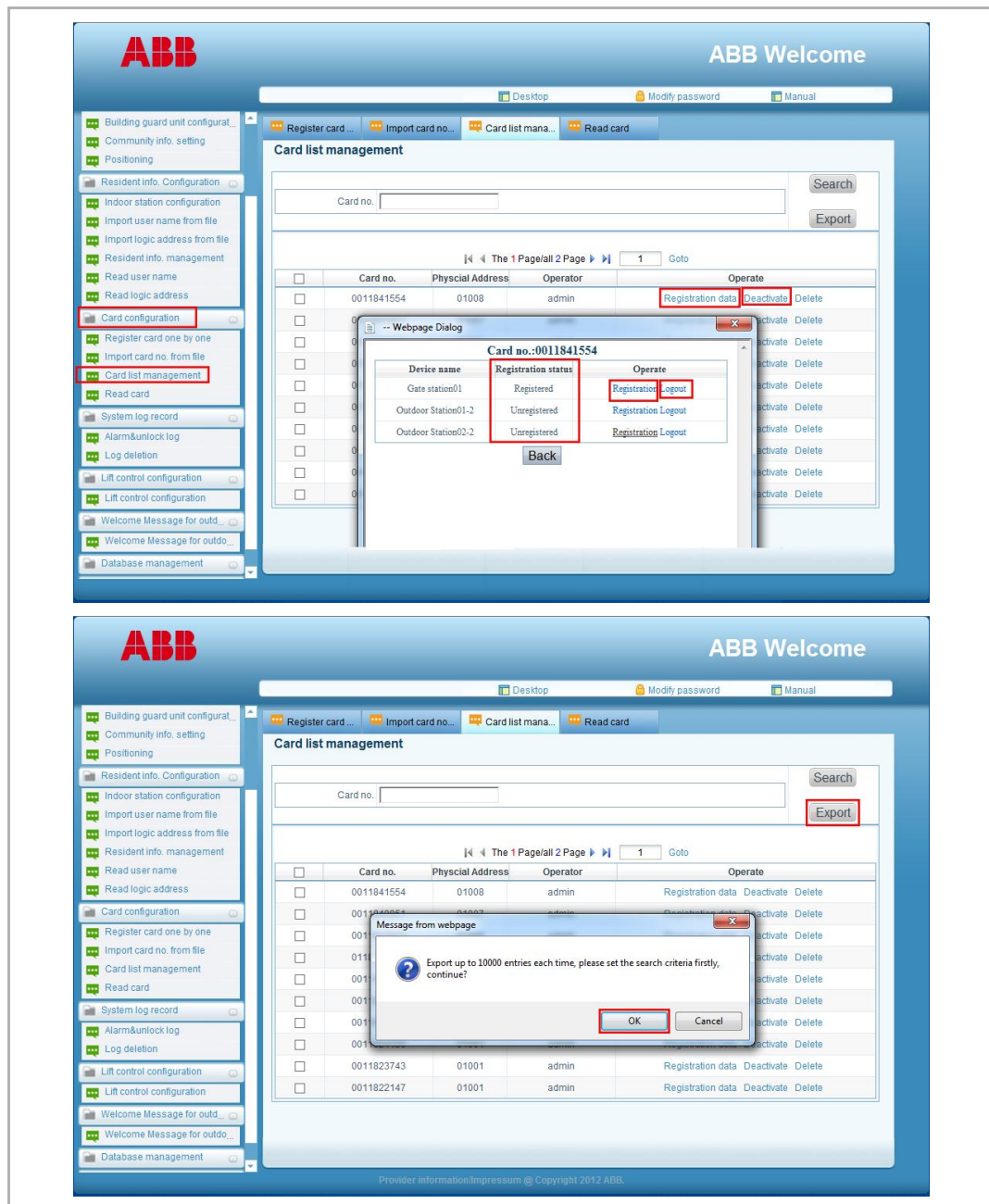


Fig. 42

### 8.5.5 Read card

Follow the steps below to read card information from the devices like gate stations, outdoor stations and guard units.

Press "Check" to see details and register to other devices.

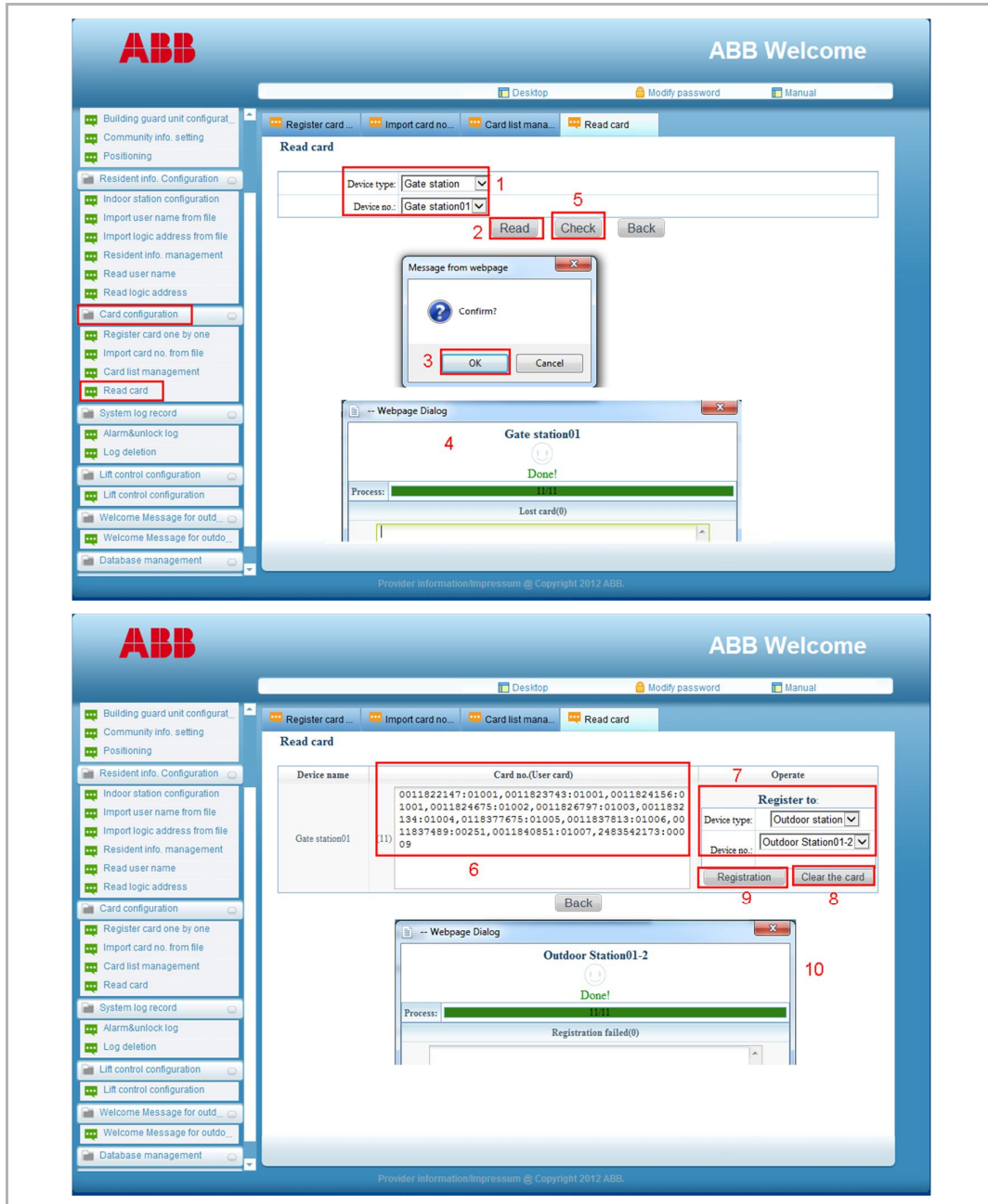


Fig. 43

## 8.6 System log record

### 8.6.1 Alarm and unlock log

The system will record alarm log automatically.

For example, there is an SOS alarm from resident. It will pop up a window to show the alarm information and indicate the location.



Fig. 44

The records are allowed to export to a file.

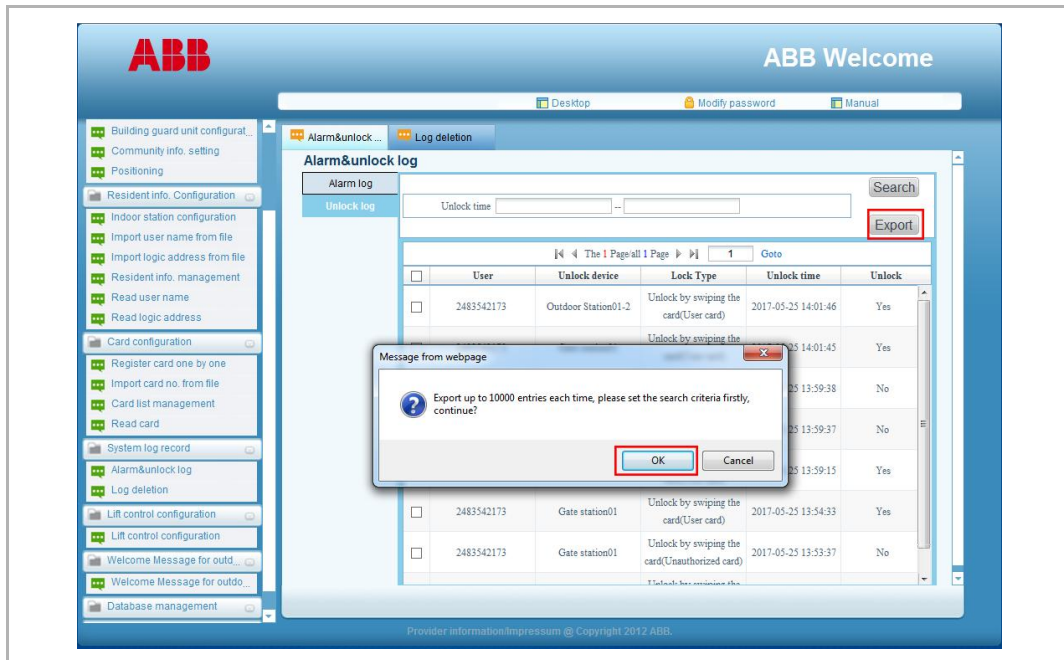


Fig. 45

### Log deletion

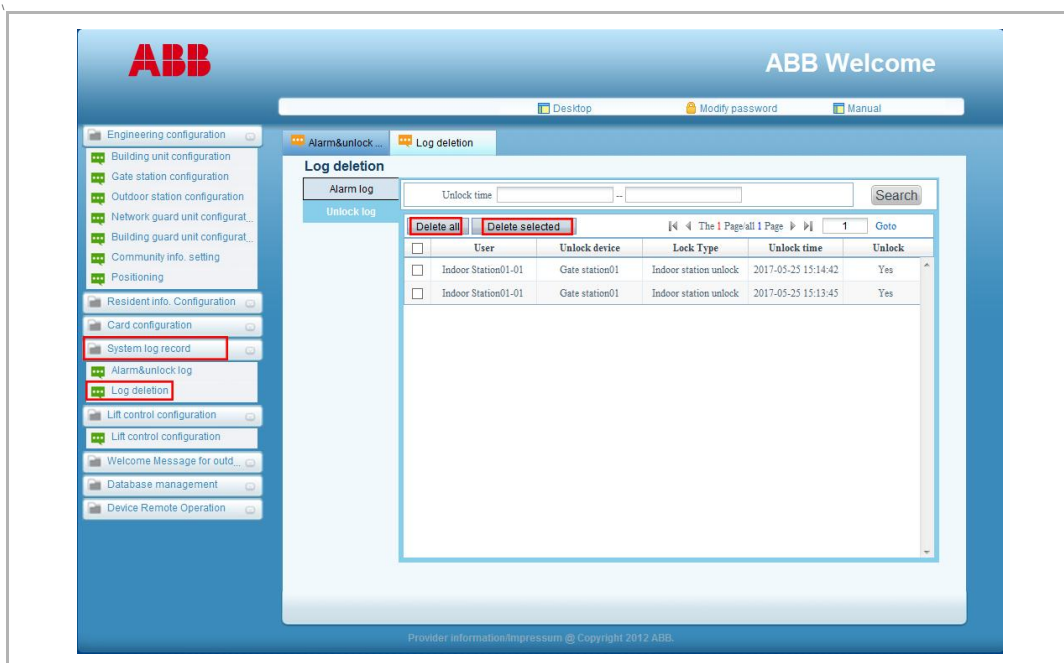


Fig. 46



### 8.7 Lift control configuration

Please find details in the product manual of lift control module.

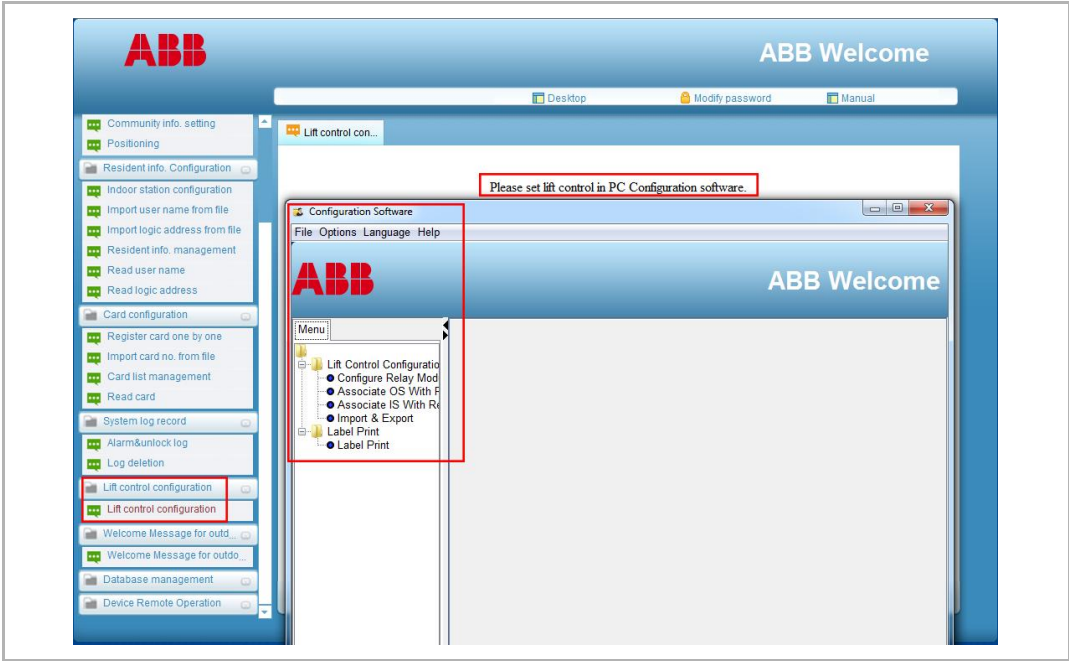


Fig. 47

### 8.8 Welcome message for outdoor station

Follow the steps below to set welcome message for gate stations or outdoor stations.

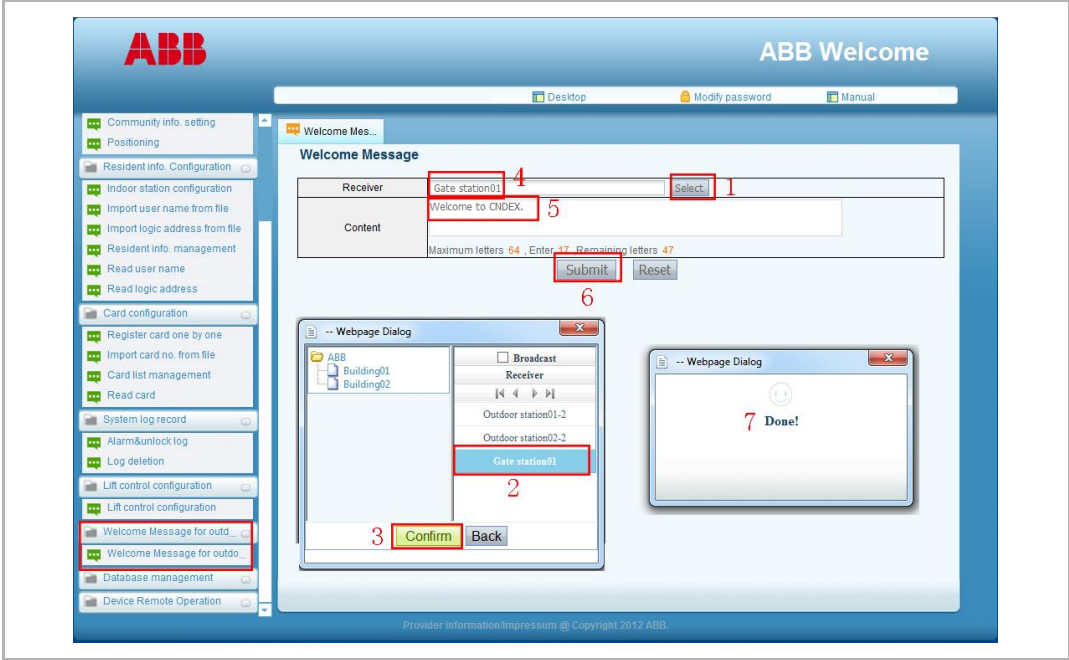


Fig. 48

8.9 Database management

8.9.1 Backup database

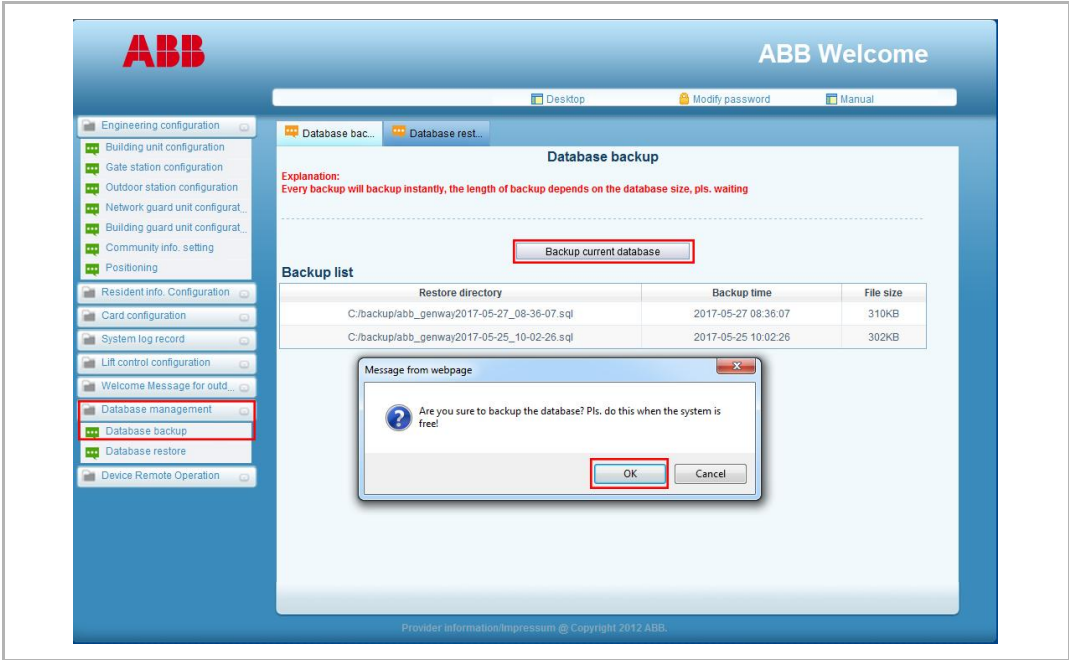


Fig. 49

8.9.2 Restore database

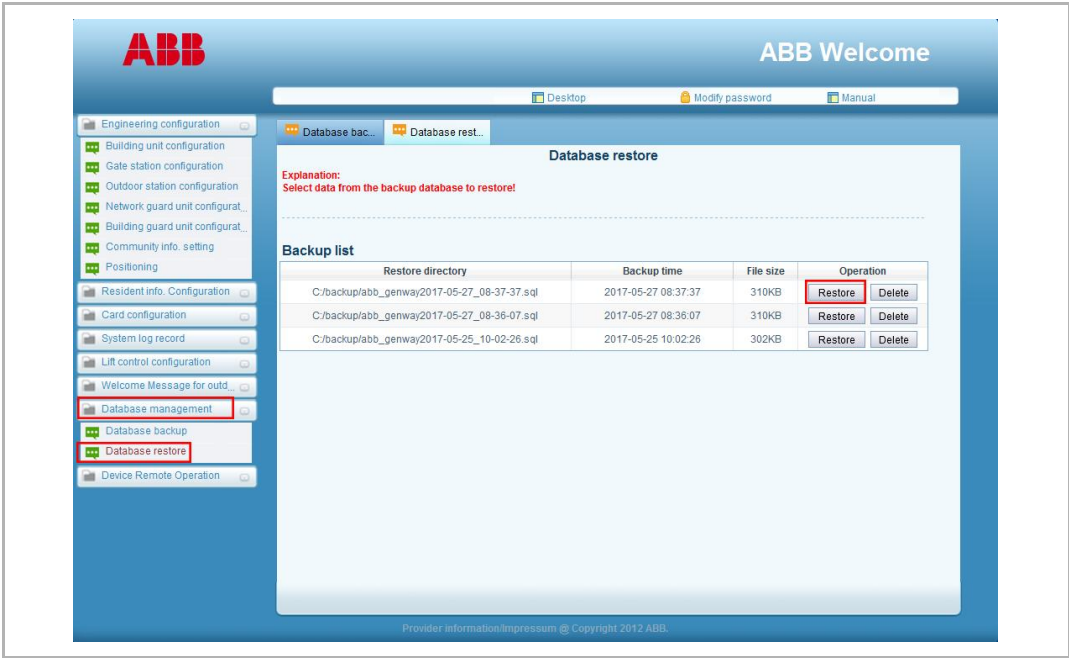


Fig. 50

## 8.10 Device remote operation

### 8.10.1 Remote upgrade

Input 2 upgrade files into the catalog "MSM04"

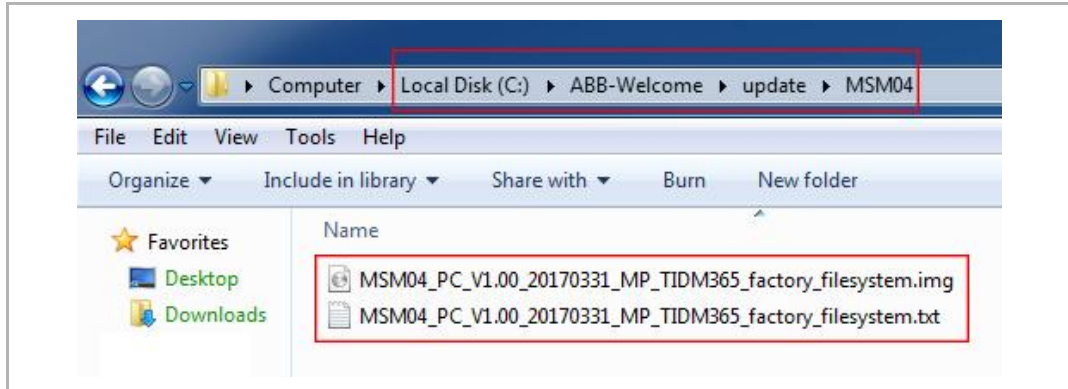


Fig. 51

Then the software could check the file automatically. Press "Upgrade" to start.

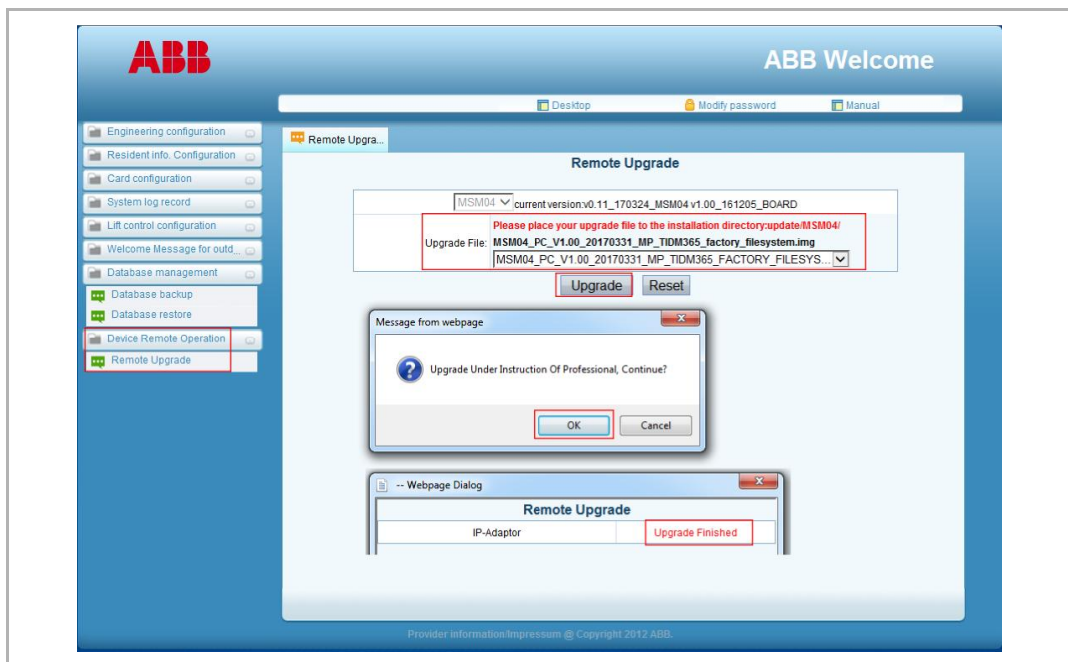


Fig. 52

## Contact us

**ABB (United Arab Emirates) Industries(L.L.C)**  
P.O.Box 11070 Dubai-UAE  
T : +971 4 3147 586  
F : +971 4 3401 541

**ABB (Turkey) Elektrik San.AS**  
ABB Elektrik Sanayi AS. Organize Sanayi Bolgesi 2 Cadde  
No: 16 Y. Dudullu-Istanbul  
T : +90 216 528 2281  
F : +90 216 528 2945

**ABB (Thailand) Ltd.**  
161/1 SG Tower, 1st-4th Floor, Soi Mahadlekuang 3, Rajdamri Road, Lumpini, Pathumwan Bangkok 10330, Thailand  
T : +66 2 6651 000  
F : +66 2 6651 043

**ABB (Korea) Ltd.**  
Oksan Bldg, 10th Fl. 157-33 Samsung-dong, Gangnam-gu, 135-090, Seoul, Korea  
T : +82 2 5283 177  
F : +82 2 5282 350

**ABB Global Marketing - Lebanon**  
Down Town, Beirut, ebanon  
T : +961 1983 724/5  
F : +961 1983 723

**ABB (India) Ltd.**  
Plot No.1, Sector-1B, I.I.E.SIDCUL, Haridwar-249403.India  
T : +91 133 423 5447  
F : +91 133 423 5449

**ABB Australia Pty Ltd.**  
601 Blackburn Road  
3168, Notting Hill, Victoria, Australia  
T : +61 3 8577 7139  
F : +61 3 9545 0415

**ABB (Vietnam) Ltd.**  
Km 9 National Highway 1A , Hoang Liet, Hoang Mai, Hanoi, Vietnam  
T : +84 4 3861 1010  
F : +84 4 3861 1009

**ABB (KSA) Electrical Industries Co. Ltd.**  
P.O.Box 325841, Riyadh 11371  
T : +966 1 1484 5600  
F : +966 1 1206 7609

**ABB (Russia) Ltd.**  
3121 Wiring Accessories  
30/1 bld.2, Obrucheva str. RU  
T : +7 495 777 2220  
F : +7 495 777 2220

**ABB Malaysia Sdn Bhd**  
Block A, Level 2, Lot 608, Jalan SS13/1K 47500 Subang Jaya Selangor  
T : +60 3 5628 4888  
F : +60 3 5635 8200

**ABB (Hong Kong) Ltd.**  
3 Dai Hei Street, Tai Po Industrial Estate, Tai po, Hong Kong  
T : +852 2 9293 912  
F : +852 2 9293 505

**ABB Pte. Ltd.**  
2 Ayer Rajah Crescent, Singapore 139935  
T : + 65 6 7765 711  
F : + 65 6 7780 222

### Notice

We reserve the right to make technical changes at all times as well as changes to the contents of this document without prior notice. The detailed specifications agreed upon apply for orders. ABB accepts no responsibility for possible errors or incompleteness in this document.

We reserve all rights to this document and the topics and illustrations contained therein. The document and its contents, or extracts thereof, must not be reproduced, transmitted or reused by third parties without prior written consent by ABB

Copyright© 2017 ABB  
All rights reserved