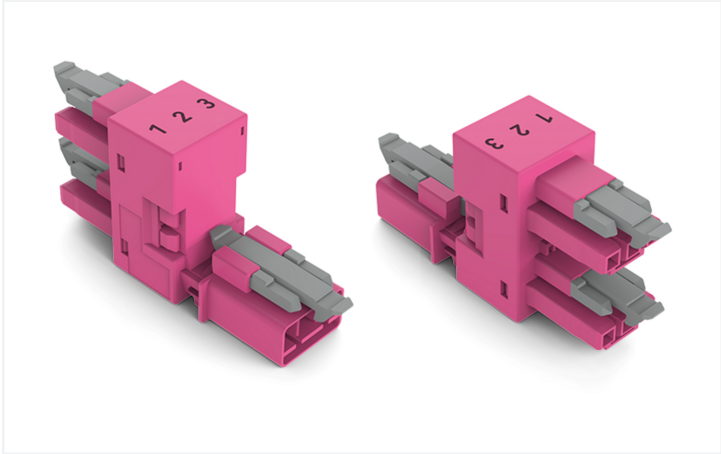


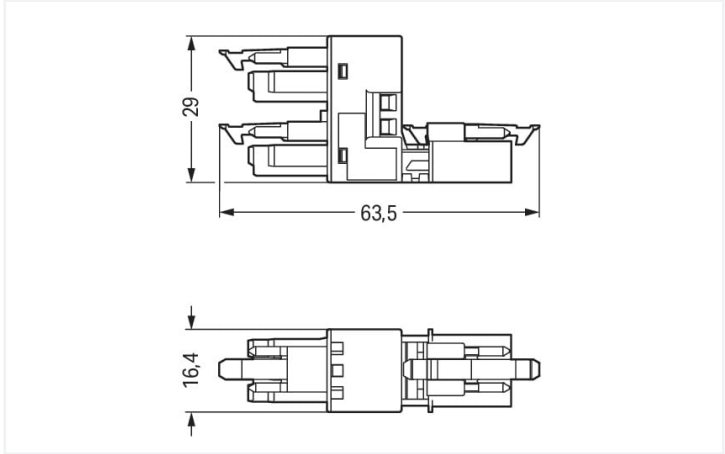
Data Sheet | Item Number: 890-1763

h-distribution connector; 3-pole; Cod. B; 1 input; 2 outputs; outputs on one side; 3 locking levers; for flying leads; pink

<https://www.wago.com/890-1763>



Color: ■ pink



Dimensions in mm

Distribution connector *WINSTA*® MINI with protection against mismating

The *WINSTA*® MINI distribution connector 3-pole supports rapid, correct installation. WAGO pluggable installation connectors are used when criteria repeat or are planned on a defined pattern, for example for installing grid lighting or flush-mount lighting. For greater protection in electrical installations, the pluggable installation connector is provided with mechanical protection against mismating. B coding enables the *WINSTA*® MINI pluggable installation connectors to be used for control in applications in the domains of automation, robotics, and mechanical engineering. Thanks to its particularly minimal dimensions, our *WINSTA*® MINI Pluggable Connection System with Push-in CAGE CLAMP® spring pressure connection technology is very suitable in very tight spaces, i.e., for connections when very little room is available.

Push-in CAGE CLAMP® spring pressure connection technology – pluggable installation instead of laborious screw connections!

The *WINSTA*® Pluggable Connection System is ideally tailored to the strict requirements of building installation. It makes electrical installation pluggable, and therefore faster, more reliable, and error-free. Using this pre-assembled system reduces assembly times and installation errors at the construction site. Now you can also cut installation expenses without compromising safety and quality: with locking lever eliminates the need for servicing and prevents unnecessary downtime.

- effective protection against mismating
- compact design for conductors with a cross-section up to 1.5 mm<sup>2</sup>
- with B coding for use in process automation, such as lighting technology, for example
- custom-engineered solutions
- convenient installation and commissioning

Notes	
Variants:	Other pole markings Other versions (or variants) can be requested from WAGO Sales or configured at <a href="https://configurator.wago.com/">https://configurator.wago.com/</a> .

Electrical data				
Ratings per		IEC/EN 60664-1		
Overvoltage category		III	III	II
Pollution degree		3	2	2
Nominal voltage		250 V	-	-
Rated surge voltage		4 kV	-	-
Rated current		16 A	-	-

Ratings per IEC/EN – Notes	
Rated current (note)	13 A for 3-pole load



Approvals per		UL 1977
Rated voltage		600 V
Rated current		14 A

General information	
Note on contact resistance	approx. 1 mΩ of contact resistance approx. 0.25 mΩ contact transition plug/ socket

Connection data		
Total number of potentials	3	
		Connection 1
		Pole number 3

Physical data		
Pin spacing		4.4 mm / 0.173 inches
Width		16.4 mm / 0.646 inches
Height		29 mm / 1.142 inches
Depth		63.5 mm / 2.5 inches

Mechanical data		
Use		Control technology
Coding		B
Variable coding		No
Marking		1 2 3
Potential marking		1 2 3
Mating force of a plug-in connection		Approx. 20 ... 70 N (depending on pole number)
Retention force of a plug-in connection		When locked: > 80 N
Unmating force of a plug-in connection		Unlocked: approx. 20 ... 70 N (depending on pole number)
Number of mating cycles		200, without resistive load
Type of distribution box		h-distribution connector, outputs at one end
Protection type		IP20; IP40 when mated
Suitable		for flying leads

Plug-in connection	
Mismating protection	Yes
Note on mismating protection	All WINSTA® components are 100% protected against mismating when: a.) plugging different numbers of poles b.) plugging while rotated 180 c.) plugging while laterally staggered d.) plugging one pole
Locking lever	Yes
Locking of plug-in connection	Locking lever
Note on locking system	All connectors for mounted installations (snap-in versions for lighting fixtures or devices, all types of PCB and distribution connectors) are factory-equipped with locking levers to ensure plugs and sockets are securely locked. Additional locking levers are only required for flying leads (plug/socket).
Number of locking levers	3






Material data	
Note (material data)	<a href="#">Information on material specifications can be found here</a>
Color	pink
Material group	I
Insulation material (main housing)	Polyamide (PA66)
Flammability class per UL94	V0
Contact material	Copper or copper alloy; surface-treated
Contact Plating	Tin
Fire load	0.14 MJ
Weight	13.9 g

Environmental requirements	
Processing temperature	-5 ... +40 °C
Continuous operating temperature	-35 ... +85 °C
Note on continuous operating temperature	Insulating parts for temperatures ≤ 105 °C

Commercial data	
Product Group	20 (Winsta)
eCl@ss 10.0	27-44-06-03
eCl@ss 9.0	27-44-06-03
ETIM 9.0	EC002567
ETIM 8.0	EC002567
PU (SPU)	50 pcs
Packaging type	Box
Country of origin	DE
GTIN	4050821530756
Customs tariff number	85366990990

Environmental Product Compliance	
RoHS Compliance Status	Compliant, No Exemption

Approvals / Certificates

General approvals			Declarations of conformity and manufacturer's declarations		
  					
Approval	Standard	Certificate Name	Approval	Standard	Certificate Name
CB DEKRA Certification B.V.	IEC 61984	NL-64351	EU-Declaration of Confor- mity WAGO GmbH & Co. KG	-	-
CB DEKRA Certification B.V.	EN 61984	71-112993	UK-Declaration of Confor- mity WAGO GmbH & Co. KG	-	-
cURus Underwriters Laboratories Inc.	UL 1977	E45171			
KEMA/KEUR DEKRA Certification B.V.	EN 60320	2148952.04			



Approvals for marine applications



Approval	Standard	Certificate Name
DNV GL Det Norske Veritas, Germanischer Lloyd	-	TAE00001Z6

Downloads

Environmental Product Compliance

Compliance Search
Environmental Product Compliance 890-1763



Documentation

Bid Text
890-1763
19.02.2019
xml 2.89 KB
890-1763
02.12.2014
doc 22.50 KB



CAD/CAE-Data

CAD data
2D/3D Models 890-1763



CAE data
WSCAD Universe 890-1763
ZUKEN Portal 890-1763



1 Compatible Products

1.1 System counterpart

1.1.1 Cable assembly



**Item No.: 891-8993/205-107**  
pre-assembled connecting cable; Eca; Plug/open-ended; 3-pole; Cod. B; 1 m; 1,00 mm²; pink



**Item No.: 891-8993/105-107**  
pre-assembled connecting cable; Eca; Socket/open-ended; 3-pole; Cod. B; 1 m; 1,00 mm²; pink



**Item No.: 891-8993/005-107**  
pre-assembled interconnecting cable; Socket/plug; 3-pole; Cod. B; 1 m; 1,00 mm²; pink

1.1.2 Female connector/socket



Item No.: 890-283  
Socket; 3-pole; Cod. B; 1,50 mm²; pink

1.1.3 Male connector/plug



Item No.: 890-293  
Plug; 3-pole; Cod. B; 1,50 mm²; pink

1.2 Required Accessories

1.2.1 Installation

1.2.1.1 Mounting accessories



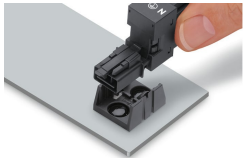
Item No.: 890-623  
Mounting plate; 3-pole; for distribution connectors; Plastic; black



Item No.: 890-673  
Mounting plate; 3-pole; for distribution connectors; Plastic; white

Installation Notes

Installation



Secure the mounting plate via pins.