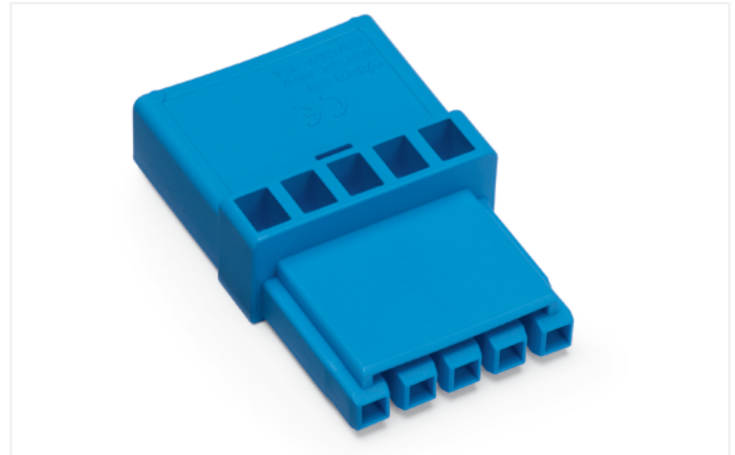
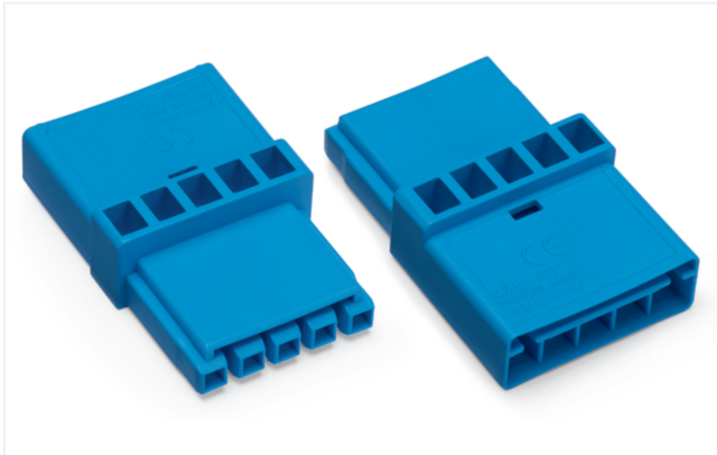


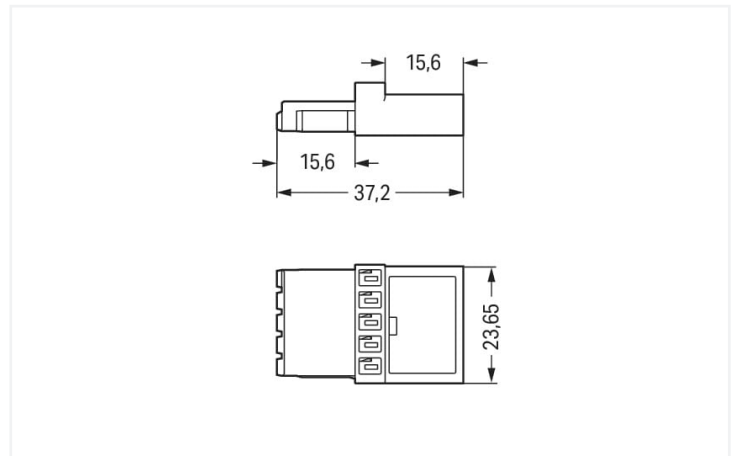
Data Sheet | Item Number: 890-619

Intermediate coupler; 5-pole; Cod. I; for sockets and plugs; blue

<https://www.wago.com/890-619>



Color: ■ blue



Dimensions in mm

Distribution connector *WINSTA*® MINI with protection type IP20

The *WINSTA*® MINI distribution connector with protection type IP20 is the pluggable solution for your use in control cabinets, for lighting connections or on PCBs. WAGO pluggable installation connectors are used when requirements repeat or are distributed on a specific grid, for example for installing grid lighting or flush-mount lighting. For greater security in electrical installations, the pluggable installation connector is equipped with mechanical protection against mismatching. Regulated lighting, as implemented in the DALI standard, for example, is the main use of *WINSTA*® MINI pluggable installation connectors with I coding. If only limited space is available, our smallest pluggable connection system, *WINSTA*® MINI, conveniently displays its advantages. It is very compact, and, with Push-in CAGE CLAMP® spring pressure connection technology, it additionally can be installed quickly, since the installation is low-maintenance and can be performed without screw connections.

WINSTA® MINI solutions for your electrical installation – protected against mismatching and maintenance-free

The *WINSTA*® Pluggable Connection System allows pluggable electrical installation. This saves time, lowers costs, and reduces the need for servicing. Take advantage of the pluggable version of our maintenance-free spring pressure connection technology too! Plan your installation with with locking lever from WAGO.

- effective protection against mismatching
- consistent IP40 protection
- for lighting management
- exact dimensions
- convenient installation and commissioning



Notes	
Note	At least one snap-in connector WITHOUT a locking lever is required on one side when connecting two lights directly via intermediate coupler.

Electrical data							
Ratings per		IEC/EN 60664-1		Approvals per		UL 1977	
Overvoltage category		III	III	II	Rated voltage	600 V	
Pollution degree		3	2	2	Rated current	12 A	
Nominal voltage	400 V	-	-				
Rated surge voltage	6 kV	-	-				
Rated current	16 A	-	-				

General information	
Note on contact resistance	approx. 1 mΩ of contact resistance approx. 0.25 mΩ contact transition plug/ socket

Connection data		
Total number of potentials	5	
		Connection 1
		Pole number 5

Physical data	
Pin spacing	4.4 mm / 0.173 inches
Width	23.65 mm / 0.931 inches
Height	10.5 mm / 0.413 inches
Depth	37.2 mm / 1.465 inches

Mechanical data	
Use	DALI, Lighting Management
Coding	I
Variable coding	No
Marking	plain
Mating force of a plug-in connection	Approx. 20 ... 70 N (depending on pole number)
Retention force of a plug-in connection	When locked: > 80 N
Unmating force of a plug-in connection	Unlocked: approx. 20 ... 70 N (depending on pole number)
Number of mating cycles	200, without resistive load
Type of distribution box	Intermediate coupler
Protection type	IP20; IP40 when mated

Plug-in connection	
Mismating protection	Yes
Note on mismating protection	All WINSTA® components are 100% protected against mismating when: a.) plugging different numbers of poles b.) plugging while rotated 180 c.) plugging while laterally staggered d.) plugging one pole
Locking lever	Yes
Locking of plug-in connection	Locking lever
Note on locking system	All connectors for mounted installations (snap-in versions for lighting fixtures or devices, all types of PCB and distribution connectors) are factory-equipped with locking levers to ensure plugs and sockets are securely locked. Additional locking levers are only required for flying leads (plug/socket).





Material data		
Note (material data)		Information on material specifications can be found here
Color	blue	
Material group	I	
Insulation material (main housing)	Polyamide (PA66)	
Flammability class per UL94	V0	
Contact material	Copper or copper alloy; surface-treated	
Contact Plating	Tin	
Fire load	0.093 MJ	
Weight	5.7 g	

Environmental requirements		
Processing temperature	-5 ... +40 °C	
Continuous operating temperature	-35 ... +85 °C	
Note on continuous operating temperature	Insulating parts for temperatures ≤ 105 °C	

Commercial data		
Product Group	20 (Winsta)	
eCl@ss 10.0	27-44-06-03	
eCl@ss 9.0	27-44-06-03	
ETIM 9.0	EC002567	
ETIM 8.0	EC002567	
PU (SPU)	50 pcs	
Packaging type	Box	
Country of origin	PL	
GTIN	4050821295440	
Customs tariff number	85366990990	

Environmental Product Compliance		
RoHS Compliance Status	Compliant, No Exemption	

Approvals / Certificates

General approvals			Declarations of conformity and manufacturer's declarations		
 			Approval	Standard	Certificate Name
Approval	Standard	Certificate Name	EU-Declaration of Confor- mity WAGO GmbH & Co. KG	-	-
CCA DEKRA Certification B.V.	EN 61535	71-123231	UK-Declaration of Confor- mity WAGO GmbH & Co. KG	-	-
CCA DEKRA Certification B.V.	IEC 61535	NL-85020			
cURus Underwriters Laboratories Inc.	UL 1977	E45171			



Approvals for marine applications



Approval	Standard	Certificate Name
ABS American Bureau of Ship- ping	Steel Vessel Rules	19-HG1869855-PDA
DNV GL Det Norske Veritas, Ger- manischer Lloyd	-	TAE00001Z6
LR Lloyds Register	EN 61535	08/20047 (E2)

Downloads

Environmental Product Compliance

Compliance Search
Environmental Product Compliance 890-619



Documentation

Bid Text			
890-619	19.02.2019	xml 2.71 KB	
890-619	30.11.2018	doc 23.00 KB	

CAD/CAE-Data

CAD data
2D/3D Models 890-619

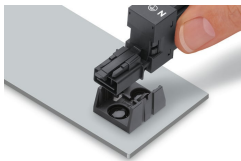


CAE data
WSCAD Universe 890-619
ZUKEN Portal 890-619



Installation Notes

Installation



Secure the mounting plate via pins.

Subject to changes. Please also observe the further product documentation!

Current addresses can be found at: www.wago.com