

—
INSTALLATION INSTRUCTION

Switch fuses

OS315-400_S

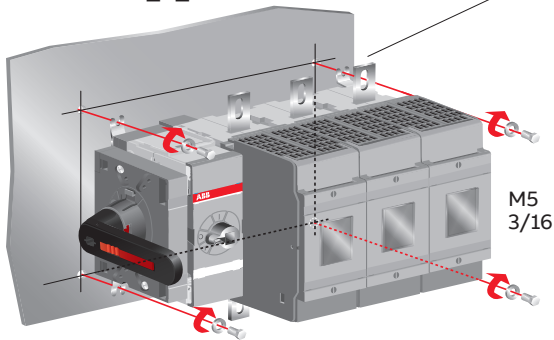


Table of contents

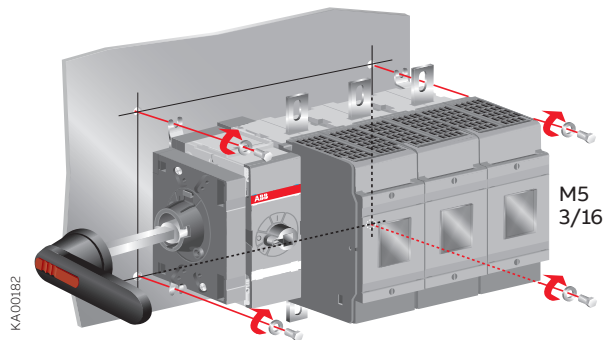
| | |
|----|------------------------------------|
| 03 | Installation |
| 04 | Labels Clearances per UL98 |
| 05 | Terminal shrouds OSS_ |
| 06 | Terminal clamps OZX_ Fuse links |
| 07 | Auxiliary contacts OA_ |
| 08 | Fourth pole OSP_ |
| 09 | Handle |
| 10 | Neutral link OS_N3 & OXN400 |
| 11 | Electronic fuse monitor OFS_ |
| 12 | Module for aux contacts OEA28_ |
| 13 | Fuse indicator DPMM_ |
| 14 | Dimension drawings |
| 15 | Warning sheet |

Installation

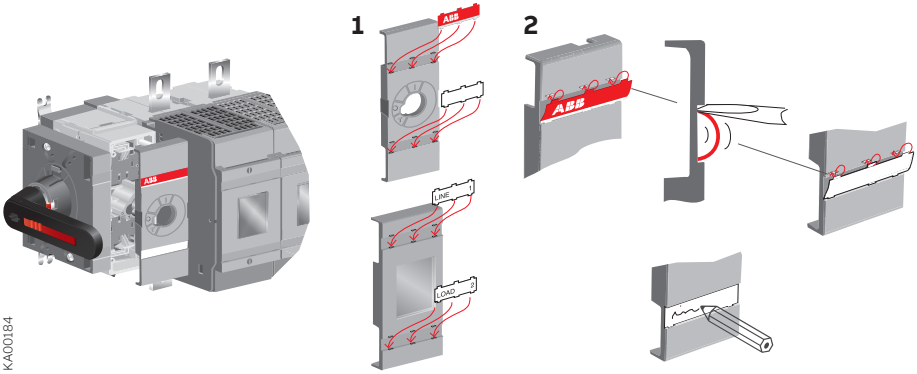
OS315-400_S_K



OS315-400_S_

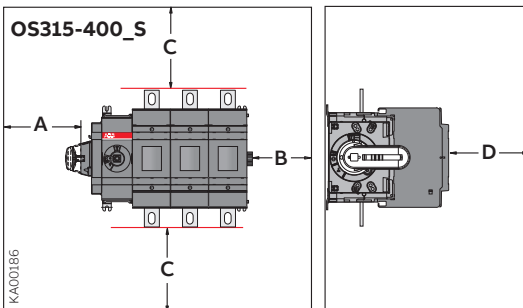


Labels



KA001B4

Clearances per UL98



KA001B6

Minimum enclosure size or equivalent volume

| Switch | Height | Width | Depth |
|--------|--------|-------|-------|
| 3-pole | 610 | 356 | 254 |
| 4-pole | 610 | 508 | 254 |

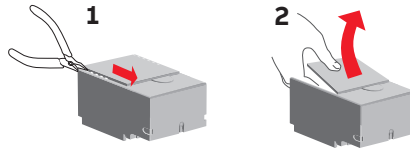
| A | B | D |
|---|----------------|----------------|
| 0 | 13 mm / 0.5 in | 13 mm / 0.5 in |

| AWG | C | MCM | C |
|---------|----------------|-----|-----------------|
| 4-3 | 100 mm 4 in | 250 | 200 mm 8 in |
| 2 | 100 mm 4 in | 300 | 250 mm 10 in |
| 1 | 100 mm 4 in | 400 | 330 mm 13 in |
| 1/0 | 125 mm 5 in | 500 | 356 mm 14 in |
| 2/0 | 150 mm 6 in | 600 | 381 mm 15 in |
| 3/0-4/0 | 175 mm 7 in | | |

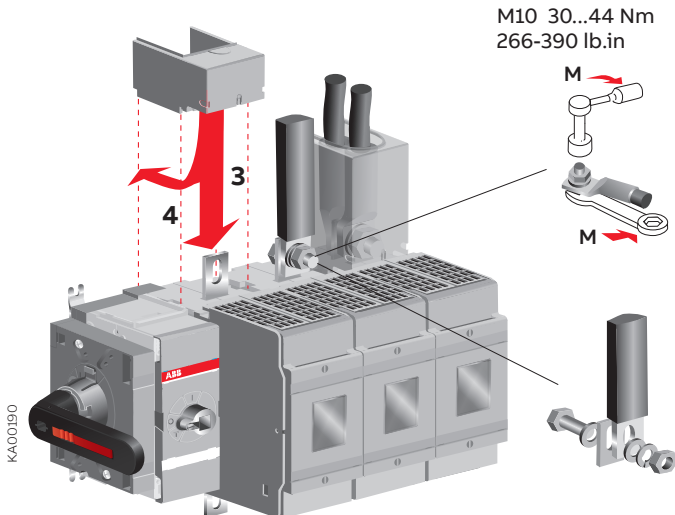
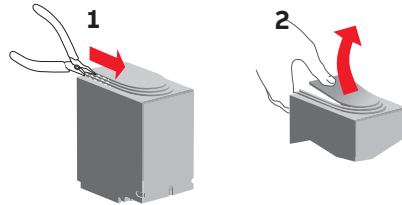
Terminal shrouds

OSS_

OSS400^G_{T1S}



OSS400^G_{T1L}



Terminal clamps

OZX_

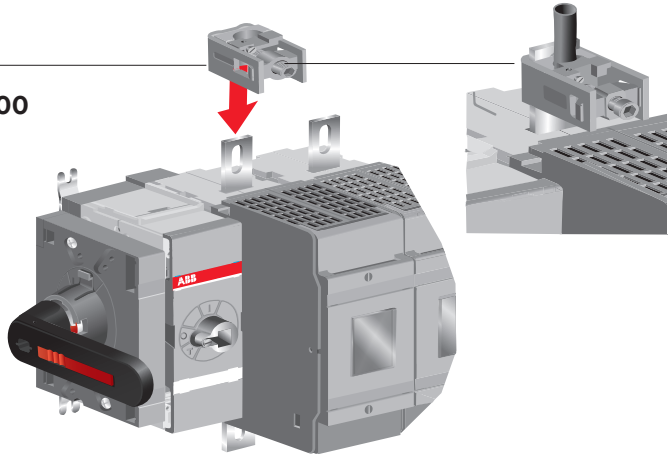
OS315, OS400

- OZXB2L
- OZXB3
- OZXB4
- OZXB7
- OZXB7L
- OZXB8
- OZXB9

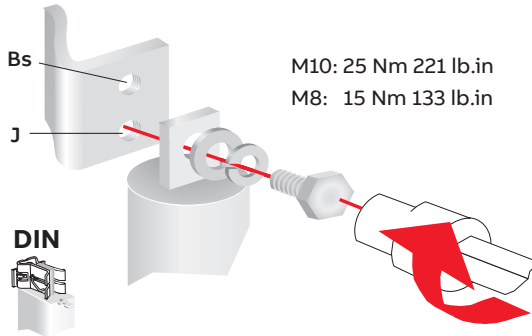
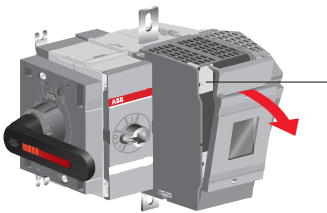
OS400J

- OZXA-400_
- OZXA-406_

KA00183



Fuse links

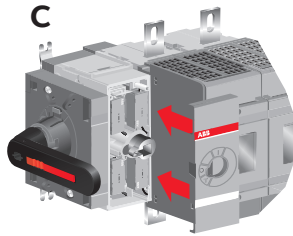
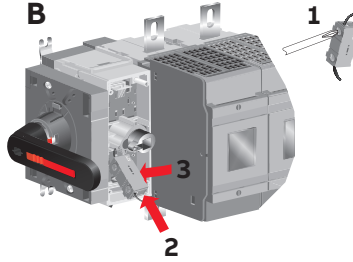
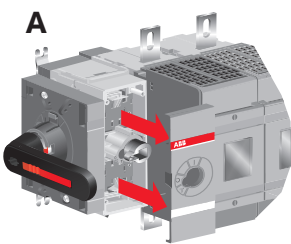


M10: 25 Nm 221 lb.in
 M8: 15 Nm 133 lb.in

KA00196

Auxiliary contacts

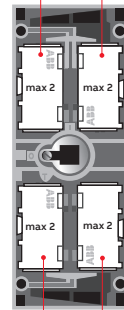
OA_



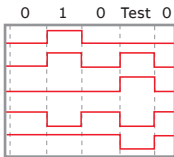
NO: OA1G10

NC: OA3G01

Test contact



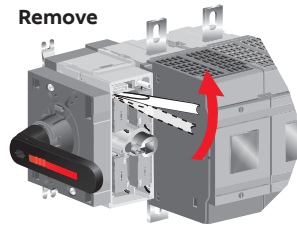
Test indication contact



KA00193

Main contact
 Test contact (NO)
 Test indication contact (NO)
 Test contact (NC)
 Test indication contact (NC)

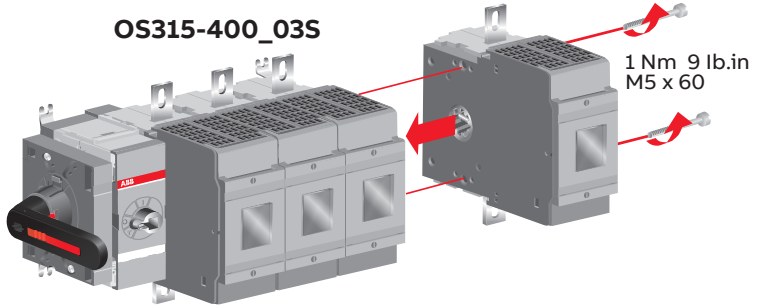
Remove



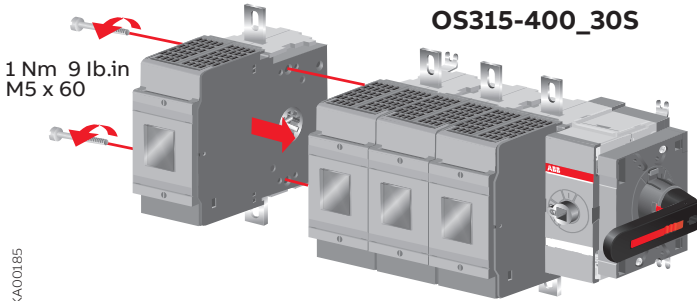
Fourth pole OSP_

OSP400N
OSP400D
OSP400B

OS315-400_03S



OS315-400_30S

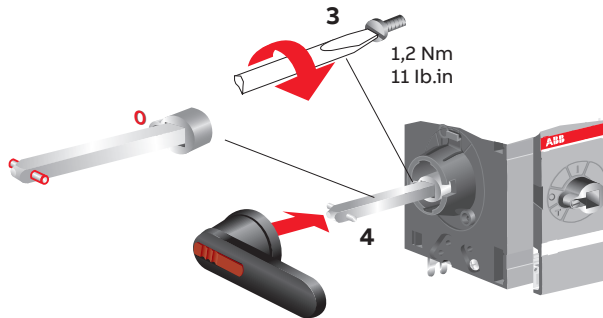
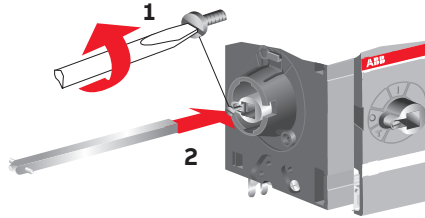


KA00185

Handle

OH_95¹12_

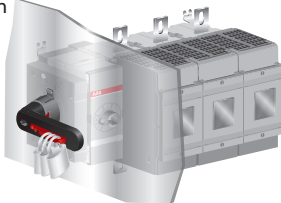
OXP12X_



OS315-400_S_K

Note: Use protection against direct contact.
For example:

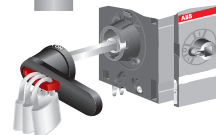
Ø5...6 mm



K400194

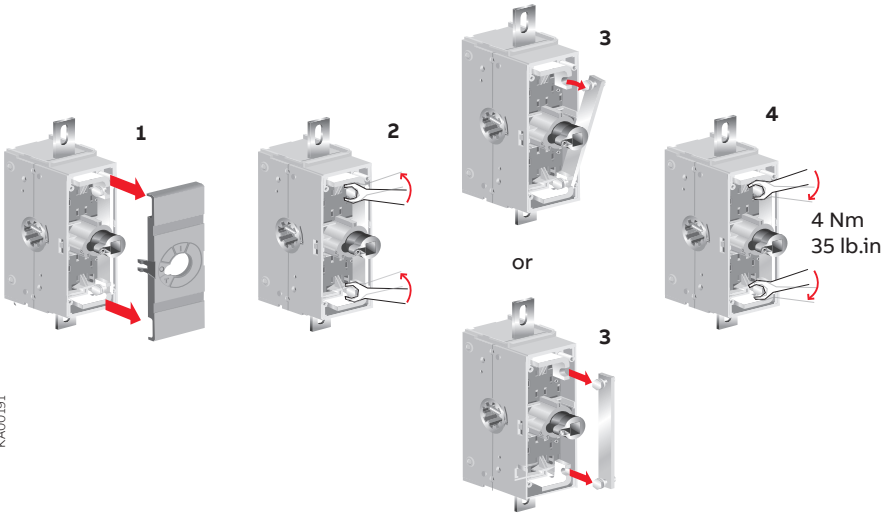
OS315-400_S

Ø5...10 mm



Neutral link

OS_N3 & OXN400

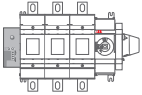


K400191

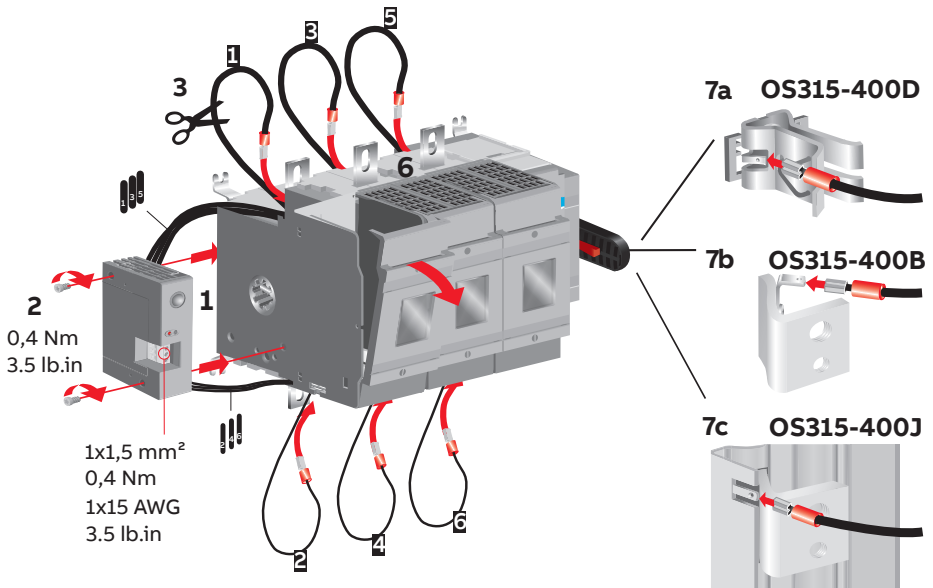
Electronic fuse monitor

OFS_

OS315-400_S + OFS_



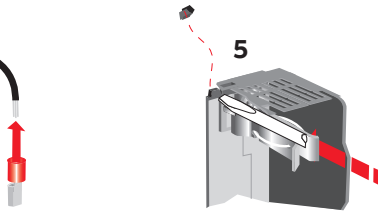
Note: Mounting directly on switch-fuse is possible only on OS__S30 and S40 types.



OFMZX 2

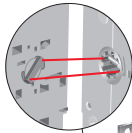
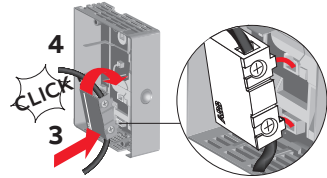
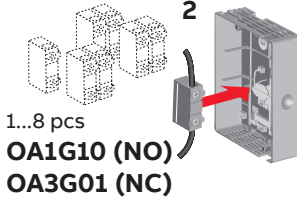
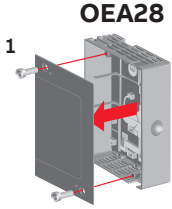
4

2,8 x 0,8
0.11 x 0.03

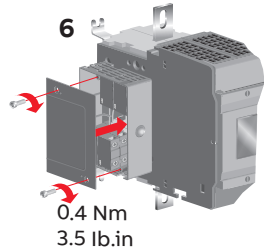
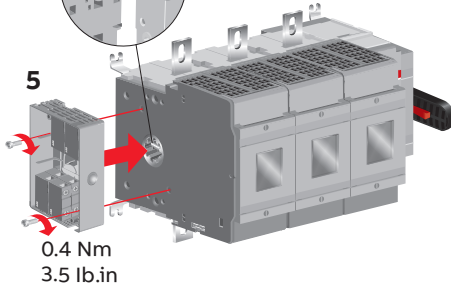
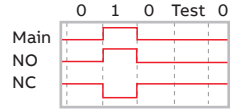


Module for aux contacts

OEA28_ OEA28_



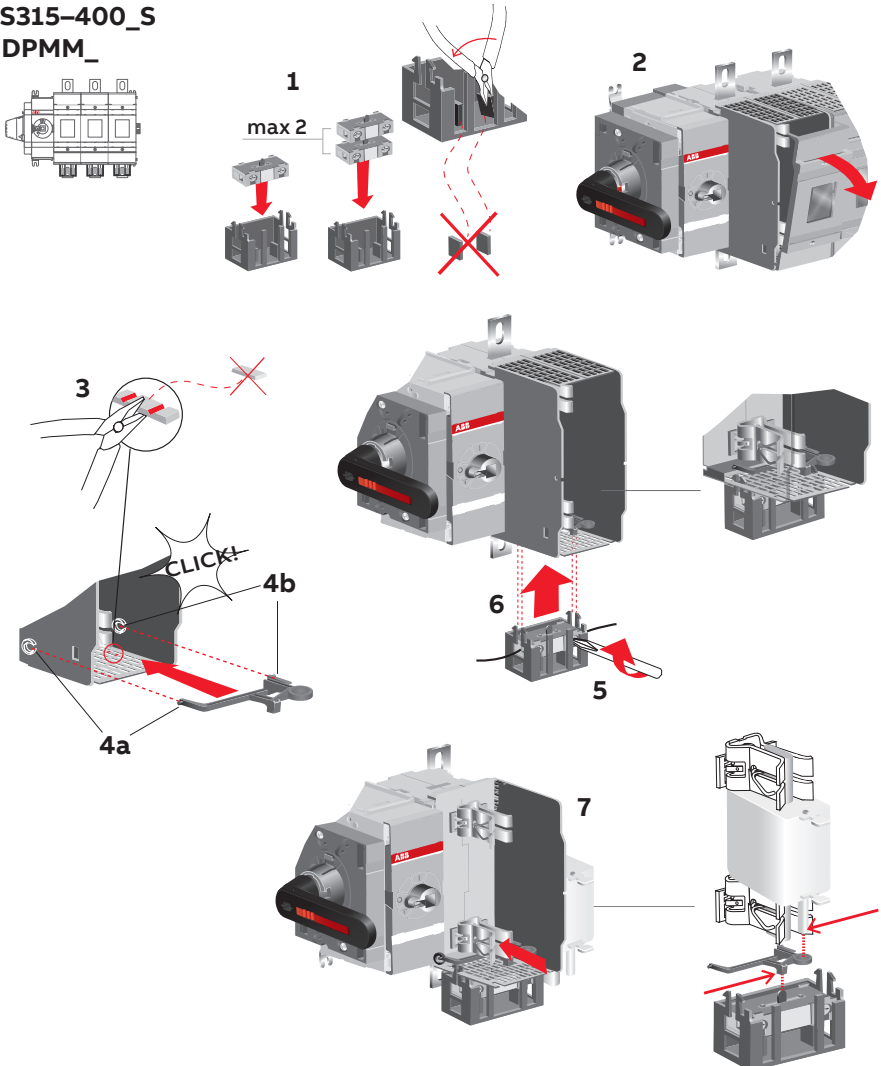
**Note: Only for OS_S10, OS_S20,
OS_S30 and OS_S40 types.**



K400192

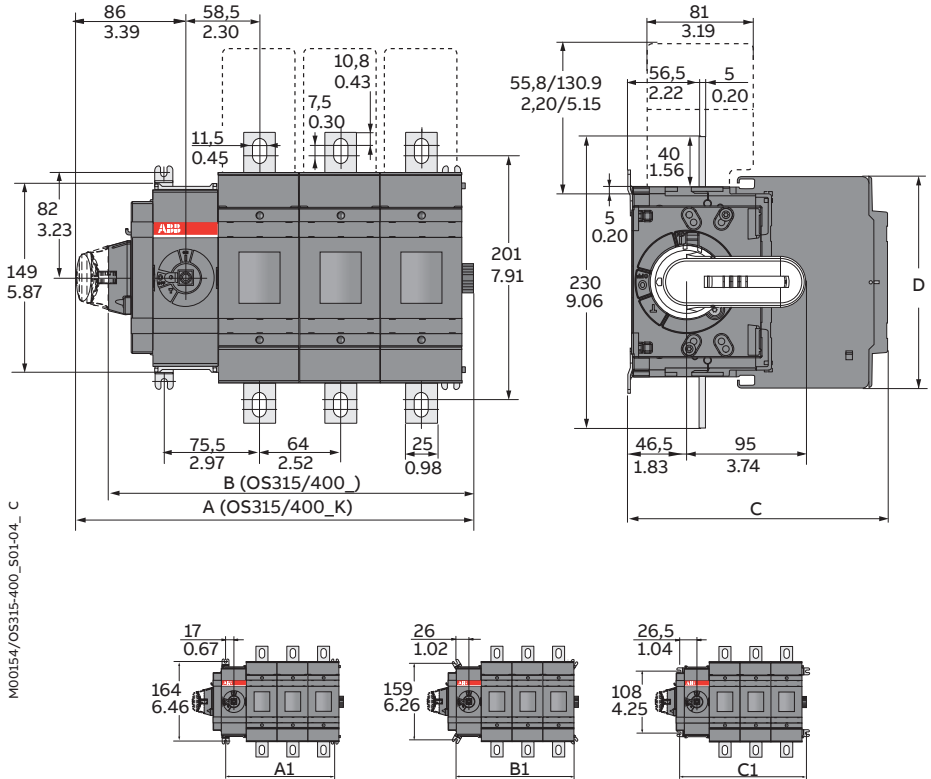
Fuse indicator DPMM_

OS315-400_S
+ DPMM_



Dimension drawings

OS315-400_S



M00154/OS315-400_S01-04_C

| mm in | OS315, OS315_K_, OS400, OS400_K_ | | | | OS400_, OS400_K | | | |
|-----------|----------------------------------|-------------|-------------|-------------|-----------------|------------|-------------|-------------|
| | BS01/JS01 | BS02/JS02 | BS03/JS03 | BS04/JS04 | DS01 | DS02 | DS03 | DS02 |
| A | 185,0/7.28 | 249,0/9.80 | 313,0/12.32 | 377,0/14.84 | 815,0/7.28 | 249,0/9.80 | 313,0/12.32 | 377,0/14.84 |
| B | 160,0/6.30 | 224,0/8.82 | 288,0/11.34 | 352,0/13.86 | 160,0/6.30 | 224,0/8.82 | 288,0/11.34 | 352,0/13.86 |
| C | 189,0/7.44 | 1896,0/7.44 | 189,0/7.44 | 189,0/7.44 | 206,0/8.12 | 206,0/8.12 | 206,0/8.12 | 206,0/8.12 |
| D | 194,0/7.64 | 194,0/7.64 | 194,0/7.64 | 194,0/7.64 | 166,0/6.54 | 166,0/6.54 | 166,0/6.54 | 166,0/6.54 |
| A1 | 98,5/3.88 | 162,5/6.40 | 226,5/8.92 | 290,5/11.44 | 98,5/3.88 | 162,5/6.40 | 226,5/8.92 | 290,5/11.44 |
| B1 | 116,0/4.59 | 180,5/7.11 | 244,5/9.63 | 308,5/12.15 | 116,5/4.59 | 180,5/7.11 | 244,5/6.93 | 308,5/12.15 |
| C1 | 134,5/5.30 | 198,5/7.81 | 262,5/10.33 | 326,5/12.85 | 134,5/5.30 | 198,5/7.81 | 262,5/10.33 | 326,5/12.85 |



| | |
|-----------|--|
| BG | Внимание! Опасно напряжение! Да се монтира само от лице с електротехническа квалификация. |
| CN | 警告！电压危险！只能由专业电工进行安装。 |
| CZ | Varování! Nebezpečné napětí! Montáž smí provádět výhradně elektrotechnik! |
| DA | Advarsel! Farlig elektrisk spænding! Installation må kun foretages af personer med elektroteknisk ekspertise. |
| DE | Warnung! Gefährliche Spannung! Installation nur durch elektrotechnische Fachkraft. |
| EL | Προειδοποίηση! Υψηλή τάση! Η εγκατάσταση πρέπει να γίνεται μόνο από εξειδικευμένους ηλεκτροτεχνικούς. |
| EN | Warning! Hazardous voltage! Installation by person with electrotechnical expertise only. |
| ES | ¡Advertencia! ¡Tensión peligrosa! La instalación deberá ser realizada únicamente por electricistas especializados. |
| ET | Hoiatus! Ohtlik pinge. Paigaldada võib ainult elektrotehnika-alane ekspert. |
| FI | Varoitus! Vaarallinen jännite! Asennuksen voi tehdä vain sähköalan ammattihenkilö. |
| FR | Avertissement! Tension électrique dangereuse! Installation uniquement par des personnes qualifiées en électrotechnique. |
| HR | Upozorenje! Opasan napon! Postavljati smije samo elektrotehnički stručnjak. |
| HU | Figyelmeztetés! Veszélyes feszültség! Csak elektrotechnikai tapasztalattal rendelkező szakember helyezheti üzembe. |
| IE | Rabhadh! Voltas guaiseach! Ba chóir do dhuine ag a bhfuil saineolas leictreicniúil, agus an té sin aháin, é seo a shuiteáil. |
| IT | Avvertenza! Tensione pericolosa! Fare installare solo da un elettricista qualificato. |
| LT | Dėmesio! Pavojinga įtampa! Dirbti leidžiama tik elektrotechniko patirties turintiems asmenims. |
| LV | Uzmanību! Bīstami - elektrība! Montāžas darbus drīkst veikt tikai personas, kurām ir atbilstoša elektrotehniskās zināšanas. |
| MT | Twissija! Vultagħ perikoluż! Għandu jiġi installat biss minn persuna b'kompetenza elettroteknika. |
| NL | Waarschuwing! Gevaarlijke spanning! Mag alleen geïnstalleerd worden door een deskundige elektrotechnicus. |
| NO | Advarsel! Farlig spenning! Montering skal kun utføres av kvalifiserte personer med elektrokompetanse. |
| PL | Ostrzeżenie! Niebezpieczne napięcie! Instalacji może dokonać wyłącznie osoba z fachową wiedzą w dziedzinie elektrotechniki. |
| PT | Aviso! Tensão perigosa! A instalação só deve ser realizada por um electricista especializado. |
| RO | Avertizare! Tensiune periculoasă! Instalarea trebuie efectuată numai de către o persoană cu experiență în electrotehnică. |
| RU | Осторожно! Опасное напряжение! Монтаж должен выполняться только специалистом-электриком. |
| SE | Varning! Farlig spänning! Installation får endast utföras av en elektriker. |
| SK | Varovanie! Nebezpečné napätie! Montáž môže vykonávať iba skúsený elektrotechnik. |
| SL | Opozorilo! Nevarna napetost! Vgradnjo lahko opravi le oseba z elektrotehničnim strokovnim znanjem. |



Contact us

ABB Oy

Muottitie 2A, 65320

Vaasa, Finland

abb.com/lowvoltage