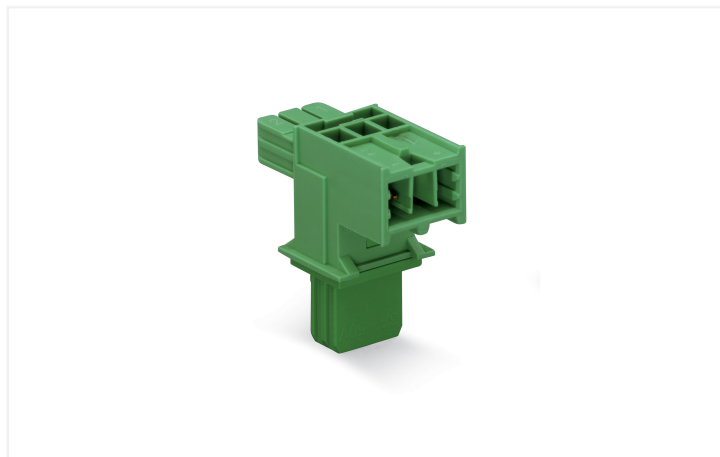


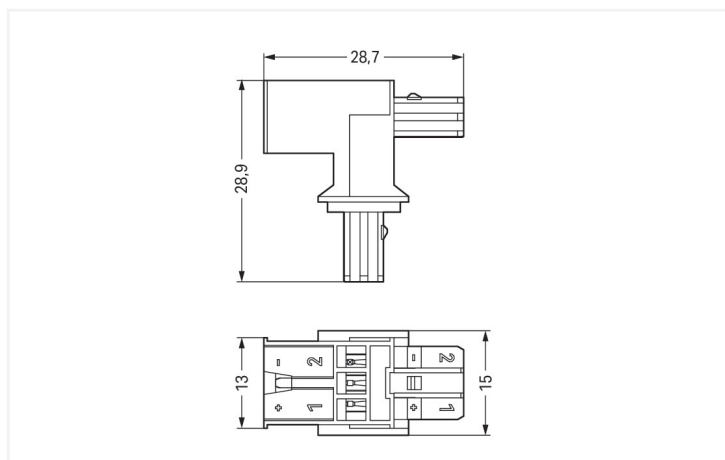
Data Sheet | Item Number: 893-1606

T-distribution connector; 2-pole; Cod. E; 1 input; 2 outputs; green

<https://www.wago.com/893-1606>



Color: ■ green



Dimensions in mm

Distribution connector *WINSTA*® KNX with protection against mismatching

The *WINSTA*® KNX distribution connector 2-pole supports rapid, correct installation. WAGO pluggable installation connectors are useful when specifications repeat or are distributed on a specific pattern, for example for installing grid lighting or flush-mount lighting. For greater security in electrical installations, the pluggable installation connector is provided with mechanical protection against mismatching. The pluggable installation connector is protected against ingress by solid objects in accordance with protection type IP20 (Only when mated and secured with a strain relief housing (These compact connectors are not designed for use in open, easily accessible areas.)). The KNX standard is the ultimate benchmark in building automation. It ensures error-free, manufacturer-independent networking of state-of-the-art building systems. *WINSTA*® KNX pluggable installation connectors with E coding are often used in KNX applications.

Lower costs through fast commissioning and elimination of service expenses – solutions from *WINSTA*® KNX

WINSTA® is the pluggable connection system that is perfectly tailored to the strict requirements of electrical installation. It offers error-free installation of cables and components, quickly and reliably. Take advantage of the pluggable version of our maintenance-free spring pressure connection technology too! Plan your installation with with locking lever from WAGO.

- products perfectly tailored to your requirements guarantee safe use
- for emergency power supply
- custom-engineered solutions
- convenient installation and commissioning

Electrical data

Ratings per IEC/EN 60664-1				General information	
Overvoltage category	III	III	II	Note on contact resistance	Approx. 3 mΩ contact resistance
Pollution degree	3	2	2		
Nominal voltage	50 V	-	-		
Rated surge voltage	0.8 kV	-	-		
Rated current	3 A	-	-		

Connection data

Total number of potentials	2	Connection 1	
		Pole number	2

Physical data

Width	15 mm / 0.591 inches
Height	28.9 mm / 1.138 inches
Depth	28.7 mm / 1.13 inches

Mechanical data

Technology	KNX
Coding	E
Variable coding	No
Marking	1+ 2-
Potential marking	1+ 2-
Mating force of a plug-in connection	Approx. 10 ... 15 N
Retention force of a plug-in connection	When locked: > 80 N
Unmating force of a plug-in connection	Unlocked: approx. 15 ... 20 N
Number of mating cycles	200
Type of distribution box	T-distribution connector
Protection type	IP20; Only when mated and secured with a strain relief housing (These compact connectors are not designed for use in open, easily accessible areas.)

Plug-in connection

Mismating protection	Yes
Note on mismating protection	All <i>WINSTA</i> ® components are 100% protected against mismating when: a.) plugging different numbers of poles b.) plugging while rotated 180 c.) plugging while laterally staggered d.) plugging one pole
Locking lever	Yes
Locking of plug-in connection	Locking lever
Note on locking system	All connectors for mounted installations (snap-in versions for lighting fixtures or devices, all types of PCB and distribution connectors) are factory-equipped with locking levers to ensure plugs and sockets are securely locked. Additional locking levers are only required for flying leads (plug/socket).
Number of locking levers	2



Material data	
Note (material data)	Information on material specifications can be found here
Color	green
Insulation material (main housing)	Polyamide (PA66)
Flammability class per UL94	V0
Contact material	Copper alloy; surface-treated
Contact Plating	Tin
Fire load	0.052 MJ
Weight	3.3 g

Environmental requirements	
Processing temperature	-5 ... +40 °C
Continuous operating temperature	-35 ... +85 °C
Note on continuous operating temperature	Insulating parts for temperatures ≤ 105 °C

Commercial data	
Product Group	20 (Winsta)
eCl@ss 10.0	27-44-06-03
eCl@ss 9.0	27-44-06-03
ETIM 9.0	EC002567
ETIM 8.0	EC002567
PU (SPU)	25 pcs
Packaging type	Box
Country of origin	DE
GTIN	4045454547677
Customs tariff number	85366990990

Environmental Product Compliance	
RoHS Compliance Status	Compliant,No Exemption

Downloads	
Environmental Product Compliance	
Compliance Search	
Environmental Product Compliance 893-1606	↓

Documentation			
Bid Text			
893-1606	19.02.2019	xml 2.76 KB	↓
893-1606	08.01.2015	doc 22.50 KB	↓



CAD/CAE-Data	
CAD data	CAE data
2D/3D Models 893-1606	WSCAD Universe 893-1606
	ZUKEN Portal 893-1606