

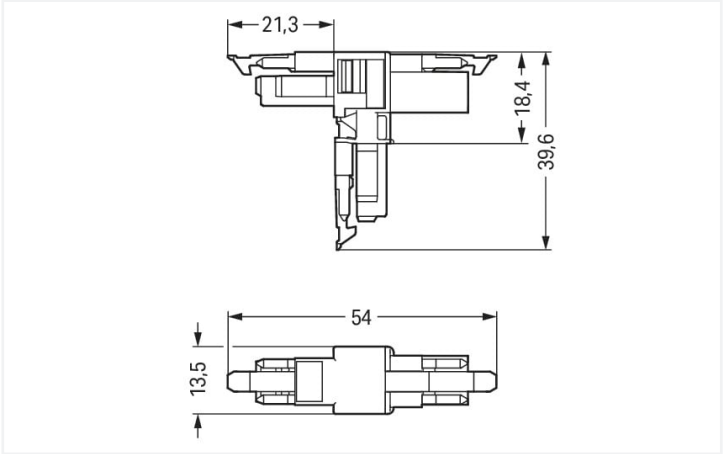
Data Sheet | Item Number: 890-1703

T-distribution connector; 2-pole; Cod. B; 1 input; 2 outputs; 3 locking levers; for flying leads; pink

<https://www.wago.com/890-1703>



Color: ■ pink



Dimensions in mm

Distribution connector *WINSTA*® MINI with protection against mismating

Use effective pluggable connections instead of laborious screw connections: With the *WINSTA*® MINI distribution connector B coding. Whether on PCBs, in control cabinets or for connecting lights – pluggable installation connectors from WAGO allow you to establish connections according to an enormous variety of requirements in seconds. For greater protection in electrical installations, the pluggable installation connector is equipped with mechanical protection against mismating. Pluggable installation connectors with B coding from the *WINSTA*® MINI line are available in pink, light green, or gray, allowing you to distinguish different circuits, for example for light, pumps or, sun blinds. Usage-specific pole marking is possible as well. *WINSTA*® MINI follows the trend towards miniaturisation. Our smallest pluggable connection system is very good for lights, for example, since due to LED technology, these offer significantly less space for the connection technology.

Lower costs through fast commissioning and elimination of service expenses – solutions from *WINSTA*® MINI

The *WINSTA*® Pluggable Connection System is ideally tailored to the strict requirements of building installation. It makes electrical installation pluggable, and consequently more efficient, even more reliable, and error-free. Use of this pre-assembled system reduces time spent on assembly and installation errors at the construction site. Take advantage of the pluggable version of our maintenance-free spring pressure connection technology too! Plan your installation with with protection type IP20 from WAGO.

- effective protection against mismating
- compact design for conductors with a cross-section up to 1.5 mm²
- for automation controllers
- flexible installation to save space
- quick replacement of defective units during ongoing operation

Notes	
Variants:	Other pole markings Other versions (or variants) can be requested from WAGO Sales or configured at https://configurator.wago.com/ .

Electrical data				
Ratings per		IEC/EN 60664-1		
Overvoltage category		III	III	II
Pollution degree		3	2	2
Nominal voltage	250 V	-	-	-
Rated surge voltage	4 kV	-	-	-
Rated current	16 A	-	-	-
Approvals per		UL 1977		
Rated voltage		600 V		
Rated current		14 A		

General information

Note on contact resistance	approx. 1 mΩ of contact resistance approx. 0.25 mΩ contact transition plug/ socket
----------------------------	--

Connection data

Total number of potentials	2	Connection 1	
		Pole number	2

Physical data

Pin spacing	4.4 mm / 0.173 inches
Width	13.5 mm / 0.531 inches
Height	39.6 mm / 1.559 inches
Depth	54 mm / 2.122 inches

Mechanical data

Use	Control technology
Coding	B
Variable coding	No
Marking	1 2
Potential marking	1 2
Mating force of a plug-in connection	Approx. 20 ... 70 N (depending on pole number)
Retention force of a plug-in connection	When locked: > 80 N
Unmating force of a plug-in connection	Unlocked: approx. 20 ... 70 N (depending on pole number)
Number of mating cycles	200, without resistive load
Type of distribution box	T-distribution connector
Protection type	IP20; IP40 when mated
Suitable	for flying leads

Plug-in connection

Mismating protection	Yes
Note on mismating protection	All WINSTA® components are 100% protected against mismating when: a.) plugging different numbers of poles b.) plugging while rotated 180 c.) plugging while laterally staggered d.) plugging one pole
Locking lever	Yes
Locking of plug-in connection	Locking lever
Note on locking system	All connectors for mounted installations (snap-in versions for lighting fixtures or devices, all types of PCB and distribution connectors) are factory-equipped with locking levers to ensure plugs and sockets are securely locked. Additional locking levers are only required for flying leads (plug/socket).
Number of locking levers	3



Material data		
Note (material data)		Information on material specifications can be found here
Color		pink
Material group		I
Insulation material (main housing)		Polyamide (PA66)
Flammability class per UL94		V0
Contact material		Copper or copper alloy; surface-treated
Contact Plating		Tin
Fire load		0.037 MJ
Weight		6.3 g

Environmental requirements		
Processing temperature		-5 ... +40 °C
Continuous operating temperature		-35 ... +85 °C
Note on continuous operating temperature		Insulating parts for temperatures ≤ 105 °C

Commercial data		
Product Group		20 (Winsta)
eCl@ss 10.0		27-44-06-03
eCl@ss 9.0		27-44-06-03
ETIM 9.0		EC002567
ETIM 8.0		EC002567
PU (SPU)		25 pcs
Packaging type		Box
Country of origin		DE
GTIN		4050821560012
Customs tariff number		85366990990

Environmental Product Compliance		
RoHS Compliance Status		Compliant, No Exemption

Downloads

Environmental Product Compliance

Compliance Search			
Environmental Product Compliance 890-1703			

Documentation

Bid Text			
890-1703	19.02.2019	xml 2.85 KB	
890-1703	03.12.2014	doc 22.50 KB	



CAD/CAE-Data	
CAD data	CAE data
2D/3D Models 890-1703	WSCAD Universe 890-1703

Installation Notes

Installation



Secure the mounting plate via pins.