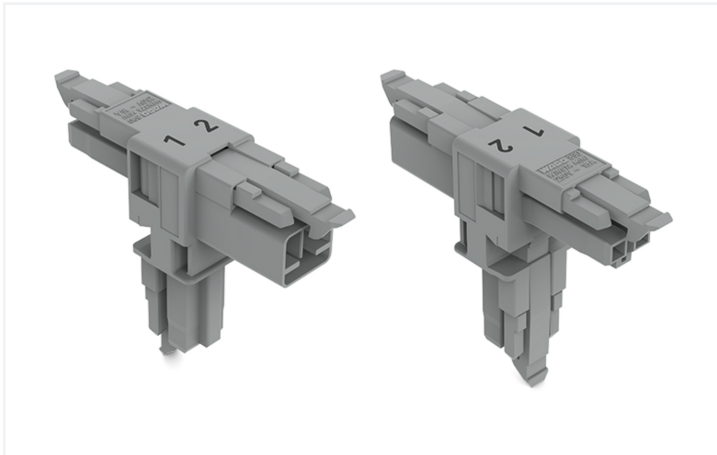


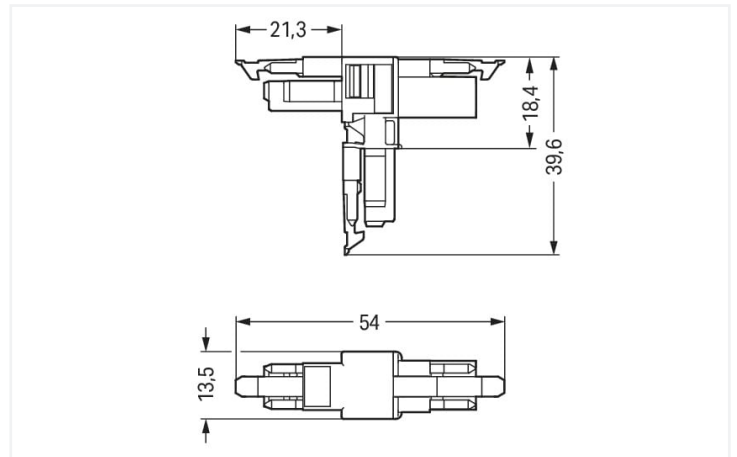
Data Sheet | Item Number: 890-1701

T-distribution connector; 2-pole; Cod. B; 1 input; 2 outputs; 3 locking levers; for flying leads; gray

<https://www.wago.com/890-1701>



Color: ■ gray



Dimensions in mm

Distribution connector *WINSTA®* MINI 2-pole

The *WINSTA®* MINI distribution connector rated current 16 A is the pluggable solution for your application in control cabinets, for lighting connections or on PCBs. Whether on PCBs, in control cabinets or for connecting lights – pluggable installation connectors from WAGO allow you to establish connections according to a huge variety of requirements in no time flat. For greater security in electrical installations, the pluggable installation connector is equipped with mechanical protection against mismatching. B coding enables the *WINSTA®* MINI pluggable installation connectors to be used for control in applications in the domains of automation, robotics, and mechanical engineering. *WINSTA®* MINI follows the trend towards miniaturisation. Our smallest pluggable connection system is very good for lights, for instance, since due to LED technology, these offer less and less space for the connection technology.

Push-in CAGE CLAMP® spring pressure connection technology – pluggable installation instead of laborious screw connections!

The *WINSTA®* Pluggable Connection System is perfectly tailored to the very strict requirements of building installation. It makes electrical installation pluggable, and thus more efficient, even more reliable, and error-free. Using this pre-assembled system reduces assembly times and errors during installation at the construction site. Enjoy the benefits of the pluggable version of our maintenance-free spring pressure connection technology too! Plan your installation with with marking from WAGO.

- effective protection against mismatching
- consistent IP40 protection
- with B coding for controllers, for example lighting fixtures and sun blinds
- custom-engineered solutions
- rapid, structured electrical installation



Notes	
Variants:	Other pole markings Other versions (or variants) can be requested from WAGO Sales or configured at https://configurator.wago.com/ .

Electrical data			
Ratings per		IEC/EN 60664-1	
Overvoltage category	III	III	II
Pollution degree	3	2	2
Nominal voltage	250 V	-	-
Rated surge voltage	4 kV	-	-
Rated current	16 A	-	-

Approvals per		UL 1977	
Rated voltage		600 V	
Rated current		14 A	

General information	
Note on contact resistance	approx. 1 mΩ of contact resistance approx. 0.25 mΩ contact transition plug/ socket

Connection data	
Total number of potentials	2

Connection 1	
Pole number	2

Physical data	
Pin spacing	4.4 mm / 0.173 inches
Width	13.5 mm / 0.531 inches
Height	39.6 mm / 1.559 inches
Depth	54 mm / 2.122 inches

Mechanical data	
Use	Control technology
Coding	B
Variable coding	No
Marking	1 2
Potential marking	1 2
Mating force of a plug-in connection	Approx. 20 ... 70 N (depending on pole number)
Retention force of a plug-in connection	When locked: > 80 N
Unmating force of a plug-in connection	Unlocked: approx. 20 ... 70 N (depending on pole number)
Number of mating cycles	200, without resistive load
Type of distribution box	T-distribution connector
Protection type	IP20; IP40 when mated
Suitable	for flying leads



Plug-in connection		
Mismating protection	Yes	
Note on mismating protection	All WINSTA® components are 100% protected against mismating when: a.) plugging different numbers of poles b.) plugging while rotated 180 c.) plugging while laterally staggered d.) plugging one pole	
Locking lever	Yes	
Locking of plug-in connection	Locking lever	
Note on locking system	All connectors for mounted installations (snap-in versions for lighting fixtures or devices, all types of PCB and distribution connectors) are factory-equipped with locking levers to ensure plugs and sockets are securely locked. Additional locking levers are only required for flying leads (plug/socket).	
Number of locking levers	3	

Material data		
Note (material data)	Information on material specifications can be found here	
Color	gray	
Material group	I	
Insulation material (main housing)	Polyamide (PA66)	
Flammability class per UL94	V0	
Contact material	Copper or copper alloy; surface-treated	
Contact Plating	Tin	
Fire load	0.14 MJ	
Weight	6.3 g	

Environmental requirements		
Processing temperature	-5 ... +40 °C	
Continuous operating temperature	-35 ... +85 °C	
Note on continuous operating temperature	Insulating parts for temperatures ≤ 105 °C	

Commercial data		
Product Group	20 (Winsta)	
eCl@ss 10.0	27-44-06-03	
eCl@ss 9.0	27-44-06-03	
ETIM 9.0	EC002567	
ETIM 8.0	EC002567	
PU (SPU)	25 pcs	
Packaging type	Box	
Country of origin	DE	
GTIN	4050821559993	
Customs tariff number	85366990990	

Environmental Product Compliance		
RoHS Compliance Status	Compliant, No Exemption	



Approvals / Certificates

Approvals for marine applications



Approval	Standard	Certificate Name
LR Lloyds Register	EN 61535	08/20047 (E2)

Downloads

Environmental Product Compliance

Compliance Search
Environmental Product Compliance 890-1701



Documentation

Bid Text			
890-1701	19.02.2019	xml 2.85 KB	
890-1701	03.12.2014	doc 22.50 KB	

CAD/CAE-Data

CAD data
2D/3D Models 890-1701

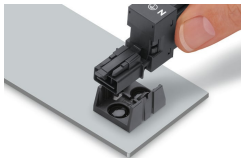


CAE data
WSCAD Universe 890-1701



Installation Notes

Installation



Secure the mounting plate via pins.