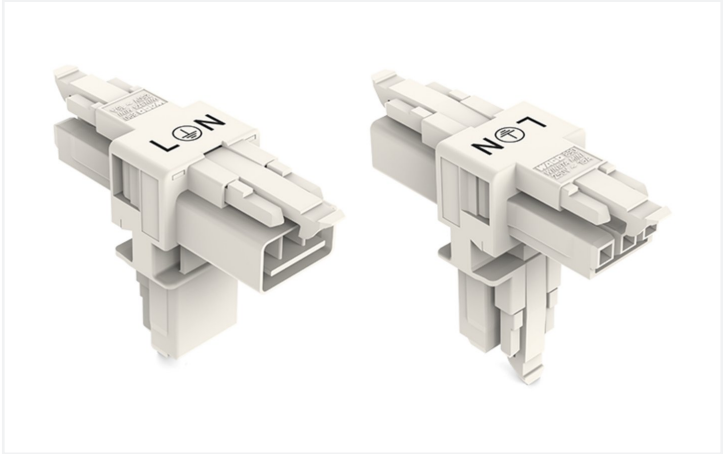


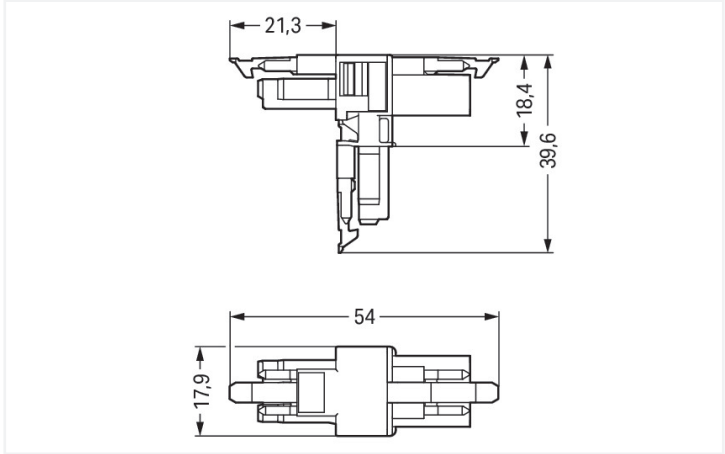
Data Sheet | Item Number: 890-665

T-distribution connector; 3-pole; Cod. A; 1 input; 2 outputs; 3 locking levers; for flying leads; white

<https://www.wago.com/890-665>



Color: ■ white



Dimensions in mm

Distribution connector *WINSTA*® MINI with protection type IP20

The *WINSTA*® MINI distribution connector 3-pole is the pluggable solution for your application in control cabinets, for lighting connections or on PCBs. WAGO pluggable installation connectors are useful when specifications repeat or are distributed on a specified pattern, for example for installing grid lighting or flush-mount lighting. The mechanical coding and color coding of the pluggable installation connector ensure error-free installation of the individual components – including protection against mismating. Standard mains applications for almost any domain of use can be realised with *WINSTA*® MINI pluggable installation connectors with A coding. Especially if only limited space is available, our smallest pluggable connection system, *WINSTA*® MINI, conveniently displays its advantageous properties. It is very compact, and, with Push-in *CAGE CLAMP*® spring pressure connection technology, it additionally saves time, since the installation is low-maintenance and can be performed without screw connections.

Lower costs through fast commissioning and elimination of service expenses – solutions from *WINSTA*® MINI

The *WINSTA*® Pluggable Connection System allows pluggable electrical installation. This significantly reduces the need for servicing and lowers costs. Choose quality and durability – with marking from WAGO makes the electrical installation of electrical components significantly easier.

- pluggable installation connectors with protection against mismating
- compact design for conductors with a cross-section up to 1.5 mm²
- with A coding for use in a large number of general mains applications
- ready to install and use immediately
- rapid, structured electrical installation

| Electrical data | | | | | | | | |
|----------------------------|-------|--|----|--|---------------|-------|---------|--|
| Ratings per | | IEC/EN 60664-1 | | | Approvals per | | UL 1977 | |
| Overvoltage category | III | III | II | | Rated voltage | 600 V | | |
| Pollution degree | 3 | 2 | 2 | | Rated current | 14 A | | |
| Nominal voltage | 250 V | - | - | | | | | |
| Rated surge voltage | 4 kV | - | - | | | | | |
| Rated current | 16 A | - | - | | | | | |
| | | | | | | | | |
| General information | | | | | | | | |
| Note on contact resistance | | approx. 1 mΩ of contact resistance approx. 0.25 mΩ contact transition plug/ socket | | | | | | |



| Connection data | | |
|---|--|--------------|
| Total number of potentials | 3 | Connection 1 |
| PE function | Preceding PE contact | |
| | | Pole number3 |
| | | |
| Physical data | | |
| Pin spacing | 4.4 mm / 0.173 inches | |
| Width | 17.9 mm / 0.705 inches | |
| Height | 39.6 mm / 1.559 inches | |
| Depth | 54 mm / 2.122 inches | |
| | | |
| Mechanical data | | |
| Use | General mains applications | |
| Coding | A | |
| Variable coding | No | |
| Marking | L ⊕ N | |
| Potential marking | L ⊕ N | |
| Mating force of a plug-in connection | Approx. 20 ... 70 N (depending on pole number) | |
| Retention force of a plug-in connection | When locked: > 80 N | |
| Unmating force of a plug-in connection | Unlocked: approx. 20 ... 70 N (depending on pole number) | |
| Number of mating cycles | 200, without resistive load | |
| Type of distribution box | T-distribution connector | |
| Protection type | IP20; IP40 when mated | |
| Suitable | for flying leads | |
| | | |
| Plug-in connection | | |
| Mismating protection | Yes | |
| Note on mismating protection | All WINSTA® components are 100% protected against mismating when: a.) plugging different numbers of poles b.) plugging while rotated 180 c.) plugging while laterally staggered d.) plugging one pole | |
| Locking lever | Yes | |
| Locking of plug-in connection | Locking lever | |
| Note on locking system | All connectors for mounted installations (snap-in versions for lighting fixtures or devices, all types of PCB and distribution connectors) are factory-equipped with locking levers to ensure plugs and sockets are securely locked. Additional locking levers are only required for flying leads (plug/socket). | |
| Number of locking levers | 3 | |
| | | |
| Material data | | |
| Note (material data) | Information on material specifications can be found here | |
| Color | white | |
| Material group | I | |
| Insulation material (main housing) | Polyamide (PA66) | |
| Flammability class per UL94 | V0 | |
| Contact material | Copper or copper alloy; surface-treated | |
| Contact Plating | Tin | |
| Fire load | 0.209 MJ | |
| Weight | 8.6 g | |




| Environmental requirements | |
|--|--|
| Processing temperature | -5 ... +40 °C |
| Continuous operating temperature | -35 ... +85 °C |
| Note on continuous operating temperature | Insulating parts for temperatures ≤ 105 °C |




| Commercial data | |
|-----------------------|---------------|
| Product Group | 20 (Winsta) |
| eCl@ss 10.0 | 27-44-06-03 |
| eCl@ss 9.0 | 27-44-06-03 |
| ETIM 9.0 | EC002567 |
| ETIM 8.0 | EC002567 |
| PU (SPU) | 25 pcs |
| Packaging type | Box |
| Country of origin | DE |
| GTIN | 4045454490515 |
| Customs tariff number | 85366990990 |

| Environmental Product Compliance | |
|----------------------------------|-------------------------|
| RoHS Compliance Status | Compliant, No Exemption |

Approvals / Certificates

| General approvals | | Declarations of conformity and manufacturer's declarations |
|--|-----------|--|
|   | | |
| Approval | Standard | Certificate Name |
| CCA DEKRA Certification B.V. | EN 61535 | 71-123231 |
| CCA DEKRA Certification B.V. | IEC 61535 | NL-85020 |
| cURus Underwriters Laboratories Inc. | UL 1977 | E45171 |
| | | EU-Declaration of Confor- mity WAGO GmbH & Co. KG |
| | | UK-Declaration of Confor- mity WAGO GmbH & Co. KG |

Approvals for marine applications

|    | | |
|--|--------------------|------------------|
| Approval | Standard | Certificate Name |
| ABS American Bureau of Ship- ping | Steel Vessel Rules | 19-HG1869855-PDA |
| DNV GL Det Norske Veritas, Ger- manischer Lloyd | - | TAE00001Z6 |
| LR Lloyds Register | EN 61535 | 08/20047 (E2) |



Downloads

Environmental Product Compliance

| | | | |
|--|--|--|-------------------|
| Compliance Search | | | |
| Environmental Product Compliance 890-665 | | | ↓ |

Documentation

| | | | |
|----------|------------|-----------------|-------------------|
| Bid Text | | | |
| 890-665 | 19.02.2019 | xml 2.83 KB | ↓ |
| 890-665 | 30.11.2018 | doc 22.50 KB | ↓ |

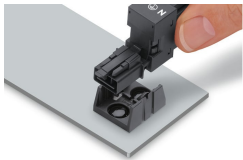
CAD/CAE-Data

| | |
|----------------------|--|
| CAD data | |
| 2D/3D Models 890-665 | |
| ↓ | |

| | |
|---------------------------|-------------------|
| CAE data | |
| EPLAN Data Portal 890-665 | ↓ |
| WSCAD Universe 890-665 | ↓ |

Installation Notes

Installation



Secure the mounting plate via pins.