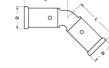


## 27PK-2626: Bend 45° 26x26



### Commercial information

PVDF press fittings in combination with multilayer pipe, a completely corrosion-free system. The synthetic press fittings are made from injection moulded PVDF (Polyvinylidene fluoride)\*. PVDF offers the user a unique combination of properties:

- Highly resistant to pressure and temperature
- Excellent mechanical strength
- Extreme flexibility: bending up to 10° is possible
- Perfectly suited for drinking water and food
- Highly resistant to chemicals and corrosion
- Embedding is possible without extra protection

#### Basic unit dimensions

|            |          |
|------------|----------|
| Height     | 32 mm    |
| Length     | 84 mm    |
| Width      | 58 mm    |
| Net weight | 0.065 kg |

#### Certificates

ATG, QB (CSTBat), DVGW Wasser, ETA, KIWA, ÖVGW Wasser, SINTEF, WRAS, KOMO, STF, ÖN EN 21003-2/-3, GOST-R, ITC, TSU, AFNOR, PZH, ACS, DNV-GL, Aenor, Sans 21003, Kontrol Biro, RISE, EMI

#### Applications

Potable water, Heating, Compressed air, Cooling, Demi Water, Sanitary

#### Solutions

Building installations, Industry, Utility, Shipbuilding

## Technical characteristics

|                                    |  |                                  |                        |
|------------------------------------|--|----------------------------------|------------------------|
| Material                           | Plastic  | Outer pipe diameter connection 1 | 26 Millimetre          |
| Material connection 1              | Polyvinylidene fluoride (PVDF)                 | Wall thickness, connection 1     | 0.95 Millimetre        |
| Material quality                   | Polyvinylidene fluoride (PVDF)                 | Outer pipe diameter connection 2 | 26 Millimetre          |
| Material quality connection 1      | Polyvinylidene fluoride (PVDF) (expired)       | Wall thickness, connection 2     | 0.95 Millimetre        |
| Surface protection connection 1    | Untreated                                      | Length                           | 83.6 Millimetre        |
| Surface treatment connection 1     | Untreated                                      | Wrench width                     | 0 Millimetre           |
| Material connection 2              | Polyvinylidene fluoride (PVDF)                 | Wrench width union nut           | 0 Millimetre           |
| Material quality connection 2      | Polyvinylidene fluoride (PVDF) (expired)       | Medium temperature (continuous)  | -10 70 Degrees celsius |
| Surface protection connection 2    | Untreated                                      | Max. operating pressure at 20 °C | 16 Bar                 |
| Surface treatment connection 2     | Untreated                                      | Standard Dimension Ratio (SDR)   | 0                      |
| Shape                              | Bend   |                                  |                        |
| Reducing                           | ✘  |                                  |                        |
| Eccentric                          | ✘  |                                  |                        |
| System specific                    | ✓  |                                  |                        |
| Connection 1                       | Press sleeve                                   |                                  |                        |
| Contour code connection 1          | TH/BE  |                                  |                        |
| Connection 2                       | Press sleeve                                   |                                  |                        |
| Contour code connection 2          | TH   |                                  |                        |
| Main colour fitting                | Black  |                                  |                        |
| Material sealing                   | Ethylene-propylene diene monomer rubber (EPDM) |                                  |                        |
| With buffer stud                   | ✓  |                                  |                        |
| High tensile strength              | ✘  |                                  |                        |
| With thermal insulation            | ✘  |                                  |                        |
| Ring stiffness class               | Other  |                                  |                        |
| With sealing rings/gaskets         | ✓  |                                  |                        |
| Capped                             | ✘  |                                  |                        |
| With drain valve                   | ✘  |                                  |                        |
| With de-aerator                    | ✘  |                                  |                        |
| FM quality mark                    | ✘  |                                  |                        |
| LPCB quality mark                  | ✘  |                                  |                        |
| ULC quality mark                   | ✘  |                                  |                        |
| UL quality mark                    | ✘  |                                  |                        |
| DIN-CERTCO certificate             | ✘  |                                  |                        |
| VdS quality mark                   | ✘  |                                  |                        |
| With approval for TÜV              | ✘  |                                  |                        |
| DVGW quality mark for gas          | ✘  |                                  |                        |
| DVGW quality mark for water        | ✓  |                                  |                        |
| KIWA certified                     | ✓  |                                  |                        |
| Gastec QA mark                     | ✘  |                                  |                        |
| KOMO certified                     | ✓  |                                  |                        |
| Type approval according to BBR/EKS | ✘  |                                  |                        |