

28 518 782 Product version from 3/10/2014



- spray head Ø 55mm
- ball-joint pivotable through 25° (in any direction)
- rain flow
- max. flow 5 l/min
- anti-scale system

Technical data:

- rosette 60 x 60 mm
- 1/2" connection

Notes:

- This product can help a building meet the requirements of Green Building Rating Systems, e.g. LEED®, BREEAM®, DGNB

	Brushed Platinum	28 518 782-06
	Chrome	28 518 782-00
	Platinum	28 518 782-08
	Dark Chrome	28 518 782-19
	Brushed Light Gold (PVD)	28 518 782-27
	Brushed Durabronze (23kt Gold)	28 518 782-28
	Matte Black	28 518 782-33
	Brushed Gold (PVD)	28 518 782-37
	Brushed Dark Brass (PVD)	28 518 782-39
	Brushed Bronze (PVD)	28 518 782-42
	Brushed Dark Bronze (PVD)	28 518 782-43
	Brushed Champagne (22kt Gold)	28 518 782-46
	Champagne (22kt Gold)	28 518 782-47
	Brushed Chrome	28 518 782-93
	Brushed Dark Platinum	28 518 782-99

Recommended miscellaneous



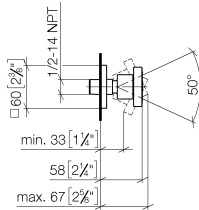
Concealed wall elbow -

35 085 970 90

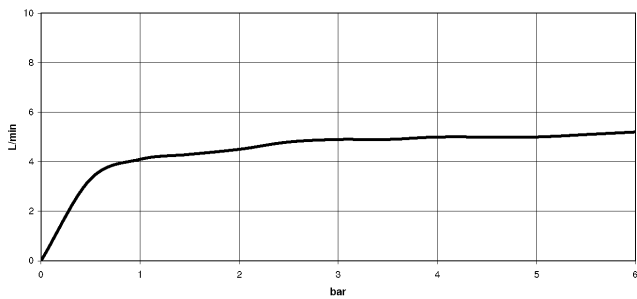
- min. recess depth 90 mm
- max. recess depth 163 mm

28 518 782 Product version from 3/10/2014

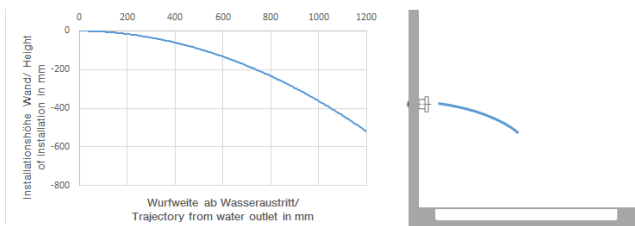
mm [inches]



Flow rate chart



Trajectory diagram



Codes & Standards

ASME A112.18.1	cUPC	DIN 4109	ISO 3822
Scottish Water Byelaws	UK Water Supply Regulations	Ü-Zeichen	



Body spray without volume control FlowReduce - Brushed Platinum

SERIES SPECIFIC

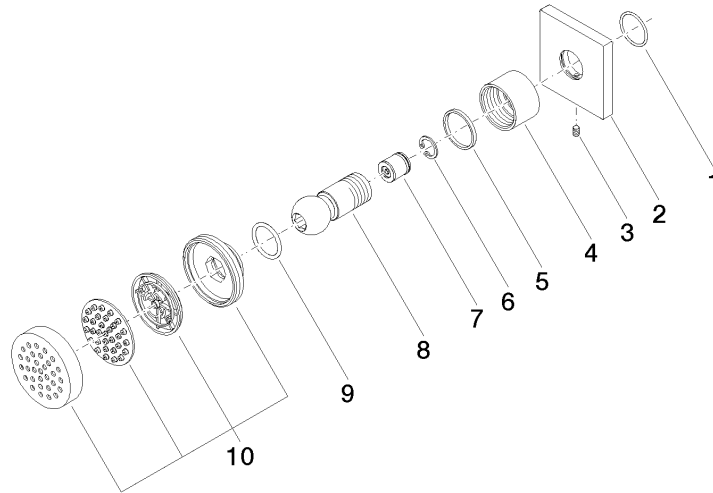
28 518 782 Product version from 3/10/2014

Certificates and sustainability

WRAS_240602

LGA_38

IAPMO_4976



Spare parts list

No.	Item Number	Name	Quantity used	Delivery time
9	09 14 10 015 90	O-Ring EPDM 70 21,5 x 2,5 mm -	1.00	14
8	09 21 40 016-06	Ball joint for bidet aerator Ø 26 x 58,5 mm - Brushed Platinum	1.00	-
Spare part can no longer be ordered, please order the replacement item				
4	09 23 30 026-06	Mounting for body spray Ø 34 x 22 mm - Brushed Platinum	1.00	20
10	90 12 05 027 00-06	Spray face for body sprays Ø 55 x 12 mm - Brushed Platinum	1.00	20
5	09 14 15 010 90	Ring Ø 25,3 x Ø 28,3 x 2,5 mm -	1.00	14
3	09 31 11 048 90	Mounting Threaded pin with hexagon socket with point M4 x 8 mm -	1.00	14
1	09 14 10 098 90	O-Ring 22,0 x 1,6 mm -	1.00	14
7	09 23 01 048 90	Back-flow preventer 5 l/min. -	1.00	14
2	09 27 98 003-06	Rosette 60 x 60 x 9 x Ø 24 mm - Brushed Platinum	1.00	20
6	09 16 01 014 90	Ring Retaining ring Ø 15 x 1 mm -	1.00	14