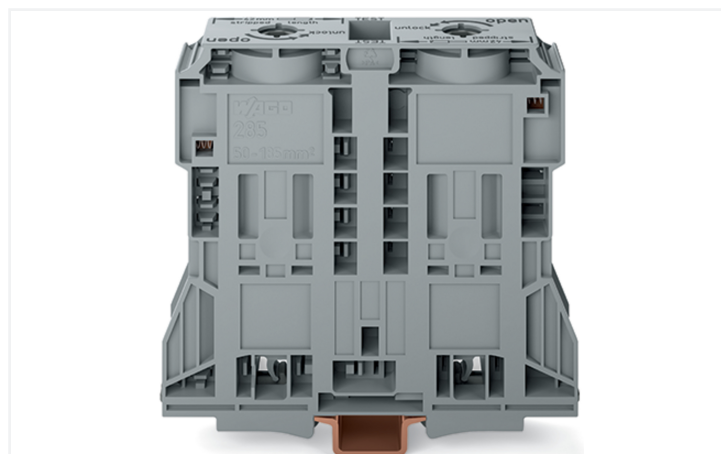
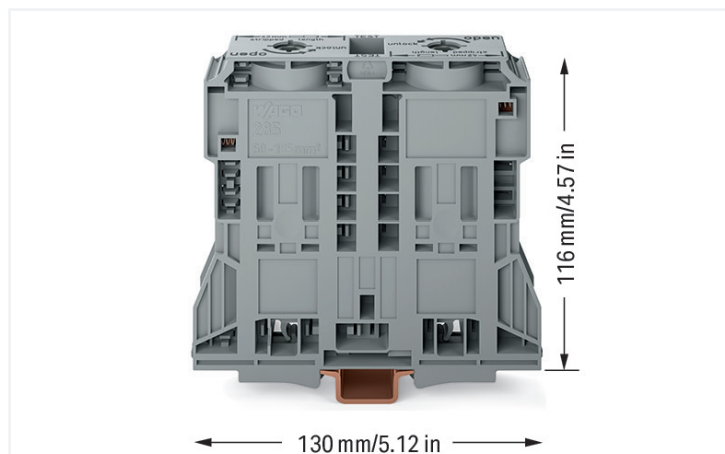


## Data Sheet | Item Number: 285-1185

2-conductor through terminal block; 185 mm<sup>2</sup>; lateral marker slots; only for DIN 35 x 15 rail; POWER CAGE CLAMP; 185,00 mm<sup>2</sup>; gray

<https://www.wago.com/285-1185>



Color: ■ gray

High-current terminal block, 285 Series, power cage clamp

This through terminal block (item number 285-1185) is designed to connect conductors quickly and easily. Strip lengths must be between 45 and 47 mm when connecting conductors to this through terminal block. Featuring conductor terminals along with POWER CAGE CLAMP, this connector delivers reliable performance. The POWER CAGE CLAMP is perfect for connecting large conductor cross-sections. This universal connector is both reliable and maintenance-free. What's more, you can use it to connect all types of conductors and the clamping point can be locked open, making it easier to use. You do not need to use a torque wrench or prepare the conductor. For example, crimping ferrules is not necessary. This through terminal block is suitable for conductor cross sections ranging from 50 mm<sup>2</sup> to 185 mm<sup>2</sup>.

### Electrical data

Ratings per	IEC/EN 60947-7-1		
Oversoltage category	III	III	II
Pollution degree	3	2	2
Nominal voltage	1000 V	-	-
Rated impulse withstand voltage	12 kV	-	-
Rated current	353 A	-	-

Ratings per IEC/EN 2	
Rated voltage (III / 3)	1500 V
Rated impulse withstand voltage (III/3)	12 kV

Approvals per	UL 1059		
Use group	B	C	D
Rated voltage	600 V	600 V	-
Rated current	310 A	310 A	-

Approvals per	CSA 22.2 No 158		
Use group	B	C	D
Rated voltage	1000 V	1000 V	-
Rated current	310 A	-	-

Power Loss	
Power loss, per pole (potential)	11.2148 W
Rated current $I_N$ for power loss specification	353 A
Resistance value for specified, current-dependent power loss	9e-005 $\Omega$

General information	
Voltage type 1	AC/DC
Voltage type 2	DC
Wiring direction	Side-entry wiring

## Connection Data

Clamping units	2
Total number of potentials	1
Number of levels	1
Number of jumper slots	2

## Connection 1

Connection technology	POWER CAGE CLAMP
Actuation type	T-wrench; 8 mm
Connectable conductor materials	Copper
Nominal cross-section	185 mm <sup>2</sup> / 350 kcmil
Solid conductor	50 ... 185 mm <sup>2</sup> / 1/0 AWG ... 350 kcmil
Stranded conductor	50 ... 185 mm <sup>2</sup> / 1/0 AWG ... 350 kcmil
Fine-stranded conductor	50 ... 185 mm <sup>2</sup> / 1/0 AWG ... 350 kcmil
Fine-stranded conductor; with insulated ferrule	50 ... 150 mm <sup>2</sup> / 1/0 AWG ... 300 kcmil
Fine-stranded conductor; with uninsulated ferrule	50 ... 185 mm <sup>2</sup> / 1/0 AWG ... 350 kcmil
Strip length	45 ... 47 mm / 1.77 ... 1.85 inches
Wiring direction	Side-entry wiring

## Physical data

Width	32 mm / 1.26 inches
Height	130 mm / 5.118 inches
Depth from upper-edge of DIN-rail	116 mm / 4.567 inches

## Mechanical data

Mounting type	DIN-35 x 15 rail
Mounting (note)	only suitable for DIN 35 x 15 rail
Marking level	Side marking

## Material data

Note (material data)	<a href="#">Information on material specifications can be found here</a>
Color	gray
Material group	I
Insulation material (main housing)	Polyamide (PA66)
Flammability class per UL94	V0
Fire load	5.814 MJ
Weight	534.9 g

## Environmental requirements

Processing temperature	-35 ... +85 °C
Continuous operating temperature	-60 ... +105 °C

## Environmental Testing

Test specification: Railway applications – Rolling stock – Electronic equipment	DIN EN 50155 (VDE 0115-200):2022-06
Test procedure: Railway applications – Rolling stock equipment – Vibration and shock tests	DIN EN 61373 (VDE 0115-0106):2011-04
Spectrum/Mounting location	Service life test, Category 1, Class A/B
Functional test with noise-like oscillations	Test passed according to Section 8 of the standard
Frequency	f <sub>1</sub> = 5 Hz to f <sub>2</sub> = 150 Hz
Acceleration	0.101g (highest test level used for all axes)
Test duration per axis	10 min.
Test directions	X, Y and Z axes

### Environmental Testing

Monitoring of contact faults and interruptions	Passed
Voltage drop measurement before and after each axis	Passed
Simulated service life test through increased levels of noise-like oscillations	Test passed according to Section 9 of the standard
Frequency	$f_1 = 5 \text{ Hz}$ to $f_2 = 150 \text{ Hz}$
Acceleration	0.572g (highest test level used for all axes)
Test duration per axis	5 h
Test directions	X, Y and Z axes
Extended testing: Monitoring of contact faults and interruptions	Passed
Extended testing: Voltage drop measurement before and after each axis	Passed
Shock test	Test passed according to Section 10 of the standard
Shock pulse form	Half sine
Acceleration	5g (highest test level used for all axes)
Shock duration	30 ms
Number of shocks (per axis)	3 pos. und 3 neg.
Test directions	X, Y and Z axes
Extended testing: Monitoring of contact faults and interruptions	Passed
Extended testing: Voltage drop measurement before and after each axis	Passed
Vibration and shock stress for rolling stock equipment	Passed

### Commercial data

Product Group	1 (Rail Mounted Terminal Blocks)
PU (SPU)	5 pcs
Packaging type	Box
Country of origin	DE
GTIN	4055143067065
Customs tariff number	85369010000

### Product Classification

UNSPSC	39121410
eCl@ss 10.0	27-14-11-20
eCl@ss 9.0	27-14-11-20
ETIM 9.0	EC000897
ETIM 10.0	EC000897
ECCN	NO US CLASSIFICATION

### Environmental Product Compliance

RoHS Compliance Status	Compliant, No Exemption
------------------------	-------------------------

## Approvals / Certificates

### General approvals



Approval	Standard	Certificate Name
CCA DEKRA Certification B.V.	EN 60947	NTR NL 7965
CSA CSA Group	C22.2	1151144
KEMA/KEUR DEKRA Certification B.V.	EN 60947	71-126013

### Declarations of conformity and manufacturer's declarations



Approval	Standard	Certificate Name
EU-Declaration of Confor- mity WAGO GmbH & Co. KG	-	-
Railway WAGO GmbH & Co. KG	-	Z00004420.000
UK-Declaration of Confor- mity WAGO GmbH & Co. KG	-	-

### Approvals for marine applications



Approval	Standard	Certificate Name
ABS American Bureau of Ship- ping	EN 60947	24-0152298-PDA
DNV GL Det Norske Veritas, Ger- manischer Lloyd	-	TAE00001V2
PRS Polski Rejestr Statków	-	TE/1094/880590/23

## Downloads

### Environmental Product Compliance



#### Compliance Search

Environmental Product  
Compliance 285-1185







## Documentation

### Bid Text

Item Number	Date	File Type	Size	Action
285-1185	19.02.2019	xml	3.88 KB	
285-1185	04.01.2018	doc	25.50 KB	

## CAD/CAE-Data

CAD data	CAE data
2D/3D Models 285-1185 	EPLAN Data Portal 285-1185 
	WSCAD Universe 285-1185 
	ZUKEN Portal 285-1185 

## 1 Compatible Products

## 1.1 Optional Accessories

## 1.1.1 Cover

## 1.1.1.1 Cover

**Item No.: 285-1178**

Finger guard; touchproof cover protects unused conductor entries and jumper slots; for 185 mm<sup>2</sup> high-current terminal blocks; yellow

## 1.1.2 Current and voltage tap

## 1.1.2.1 Current and voltage tap

**Item No.: 855-1851/350-000**

Current and voltage tap up to 185 mm<sup>2</sup>; Primary rated current: 350 A; Secondary rated current: 1 A; Rated power: 0.2 VA; Accuracy class: 0.5; fused

## 1.1.3 DIN-rail

## 1.1.3.1 Mounting accessories

**Item No.: 210-198**

Copper carrier rail; 35 x 15 mm; 2.3 mm thick; 2 m long; unslotted; according to EN 60715; copper-colored

**Item No.: 210-118**

Steel carrier rail; 35 x 15 mm; 2.3 mm thick; 2 m long; unslotted; according to EN 60715; silver-colored

### 1.1.4 Ferrule

#### 1.1.4.1 Ferrule



**Item No.:** [216-445](#)

Ferrule; uninsulated; electro-tin plated

### 1.1.5 Installation

#### 1.1.5.1 Mounting accessories



**Item No.:** [285-1179](#)

Fixing element; for 185 mm<sup>2</sup> high-current terminal blocks; orange



**Item No.:** [249-197](#)

Screwless end stop; 14 mm wide; for DIN-rail 35 x 15 and 35 x 7.5; gray

### 1.1.6 Jumper

#### 1.1.6.1 Jumper



**Item No.:** [285-1171](#)

Jumper; insulated; gray

### 1.1.7 Marking

#### 1.1.7.1 Marker



**Item No.:** [793-5501/000-006](#)

WMB marking card; as card; for terminal block width 5 - 17.5 mm; stretchable 5 - 5.2 mm; plain; snap-on type; blue



**Item No.:** [793-5501/000-014](#)

WMB marking card; as card; for terminal block width 5 - 17.5 mm; stretchable 5 - 5.2 mm; plain; snap-on type; brown



**Item No.:** [793-5501/000-007](#)

WMB marking card; as card; for terminal block width 5 - 17.5 mm; stretchable 5 - 5.2 mm; plain; snap-on type; gray



**Item No.:** [793-5501/000-023](#)

WMB marking card; as card; for terminal block width 5 - 17.5 mm; stretchable 5 - 5.2 mm; plain; snap-on type; green



**Item No.:** [793-5501/000-017](#)

WMB marking card; as card; for terminal block width 5 - 17.5 mm; stretchable 5 - 5.2 mm; plain; snap-on type; light green



**Item No.:** [793-5501/000-012](#)

WMB marking card; as card; for terminal block width 5 - 17.5 mm; stretchable 5 - 5.2 mm; plain; snap-on type; orange



**Item No.:** [793-5501/000-005](#)

WMB marking card; as card; for terminal block width 5 - 17.5 mm; stretchable 5 - 5.2 mm; plain; snap-on type; red



**Item No.:** [793-5501/000-024](#)

WMB marking card; as card; for terminal block width 5 - 17.5 mm; stretchable 5 - 5.2 mm; plain; snap-on type; violet



**Item No.:** [793-5501](#)

WMB marking card; as card; for terminal block width 5 - 17.5 mm; stretchable 5 - 5.2 mm; plain; snap-on type; white



**Item No.:** [793-5501/000-002](#)

WMB marking card; as card; for terminal block width 5 - 17.5 mm; stretchable 5 - 5.2 mm; plain; snap-on type; yellow



**Item No.:** [793-501/000-006](#)

WMB marking card; as card; not stretchable; plain; snap-on type; blue



**Item No.:** [793-501/000-007](#)

WMB marking card; as card; not stretchable; plain; snap-on type; gray



**Item No.:** [793-501/000-023](#)

WMB marking card; as card; not stretchable; plain; snap-on type; green



**Item No.:** [793-501/000-017](#)

WMB marking card; as card; not stretchable; plain; snap-on type; light green



**Item No.:** [793-501/000-012](#)

WMB marking card; as card; not stretchable; plain; snap-on type; orange



**Item No.:** [793-501/000-005](#)

WMB marking card; as card; not stretchable; plain; snap-on type; red



**Item No.:** [793-501/000-024](#)

WMB marking card; as card; not stretchable; plain; snap-on type; violet



**Item No.:** [793-501](#)

WMB marking card; as card; not stretchable; plain; snap-on type; white



**Item No.:** [793-501/000-002](#)

WMB marking card; as card; not stretchable; plain; snap-on type; yellow



**Item No.:** [2009-115/000-006](#)

WMB-Inline; for Smart Printer; 1500 pieces on roll; stretchable 5 - 5.2 mm; plain; snap-on type; blue

### 1.1.7.1 Marker



**Item No.: 2009-115/000-007**

WMB-Inline; for Smart Printer; 1500 pieces on roll; stretchable 5 - 5.2 mm; plain; snap-on type; gray



**Item No.: 2009-115/000-023**

WMB-Inline; for Smart Printer; 1500 pieces on roll; stretchable 5 - 5.2 mm; plain; snap-on type; green



**Item No.: 2009-115/000-017**

WMB-Inline; for Smart Printer; 1500 pieces on roll; stretchable 5 - 5.2 mm; plain; snap-on type; light green



**Item No.: 2009-115/000-012**

WMB-Inline; for Smart Printer; 1500 pieces on roll; stretchable 5 - 5.2 mm; plain; snap-on type; orange



**Item No.: 2009-115/000-005**

WMB-Inline; for Smart Printer; 1500 pieces on roll; stretchable 5 - 5.2 mm; plain; snap-on type; red



**Item No.: 2009-115/000-024**

WMB-Inline; for Smart Printer; 1500 pieces on roll; stretchable 5 - 5.2 mm; plain; snap-on type; violet



**Item No.: 2009-115**

WMB-Inline; for Smart Printer; 1500 pieces on roll; stretchable 5 - 5.2 mm; plain; snap-on type; white



**Item No.: 2009-115/000-002**

WMB-Inline; for Smart Printer; 1500 pieces on roll; stretchable 5 - 5.2 mm; plain; snap-on type; yellow

### 1.1.7.2 Marking strip



**Item No.: 2009-110**

Marking strips; for Smart Printer; on reel; not stretchable; plain; snap-on type; white

### 1.1.8 Power tap

#### 1.1.8.1 Power tap



**Item No.: 285-1175**

Power tap; for 185 mm<sup>2</sup> high-current terminal blocks; gray

### 1.1.9 Protective warning marker

#### 1.1.9.1 Cover



**Item No.: 285-1177**

Protective warning marker; with high-voltage symbol, black; yellow



**Item No.: 285-1176**

Protective warning marker; yellow

### 1.1.10 Tool

#### 1.1.10.1 Operating tool



**Item No.: 285-172**

Allen wrench; with a partially insulated shaft; green

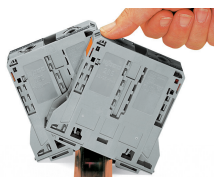


**Item No.: 285-173**

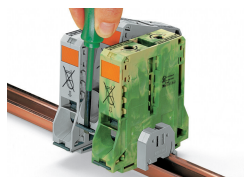
Allen wrench; with a partially insulated shaft; with anti-rotation protection; green

## Installation Notes

### Installation



Snapping a terminal block onto DIN-rail (to the left or to the right).



Removing a terminal block from the assembly (to the left or to the right).

### Conductor termination

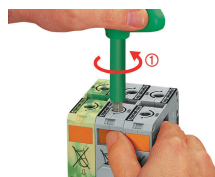


For the optimal clamping force:

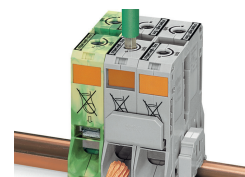
- Bend conductor
- Cut conductor to length (conductor end must be straight)
- Strip conductor



Always observe the on-unit printed strip length guide!



**Conductor termination – step 1:** Rotate the T-wrench counter-clockwise to the stop. Next, push in the orange locking tab. The clamp is locked open for hands-free wiring.

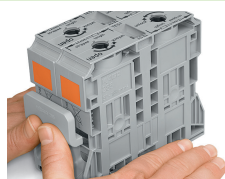


**Conductor termination – step 2:** Insert a stripped conductor into the clamping unit until it hits the backstop. Hold in this position.

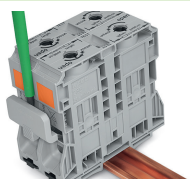


**Conductor termination – step 3:** A short counter-clockwise rotation releases the tab. When unlocked, the T-wrench rotates clockwise, securely clamping the conductor.

### Commoning



Commoning with an adjacent jumper: insert the jumper above the conductor entry hole – prior to conductor termination. The nominal cross-section remains unchanged.

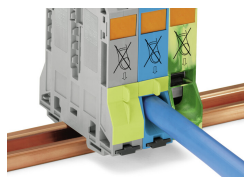


Removing jumper via operating tool.

### Cover

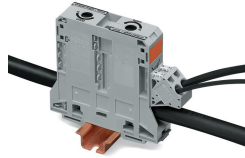
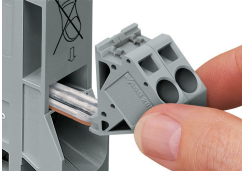


Protective warning marker may indicate: Notice: Power is still on even after switching off the main switch!



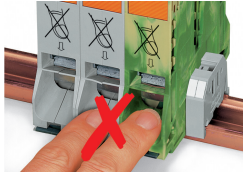
Yellow, detachable finger guards provide touch-proof safety by shielding jumper contact slots and/or unused conductor entries.

## Power tap



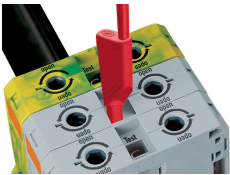
Easily and consistently tap directly into the power supply. Insert the unwired tap before opening the clamping unit.

## Security

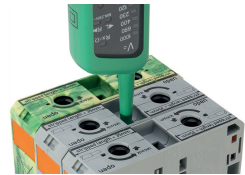


Risk of Injury!  
Do not insert fingers in the conductor entry!

## Testing

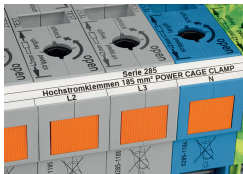


Testing via touch-proof 4 mm Ø test plugs (not available from WAGO, but offered by industry suppliers such as, Multi-Contact Deutschland GmbH).



Testing  
Voltage measurements can be performed, e.g., using a 2-pole voltage tester (Item No. 206-707).

## Marking



In addition to WMB markers, marking strips can be directly applied to 185 mm<sup>2</sup> (350 kcmil) high-current terminal blocks.