

136-006 6000K specific configuration

Introduction

Purpose of this Document

This document provides information for 136-006 6000K. During measurement, the product is used in a different mode where output power, colour temperature and/or beam angle are changed from factory standard. These adjustments can be made without altering the product and are designed to be set by the installer. In most cases, the options are set through switches on the product.

Results

Total input power	7.5 W
Correlated Colour Temperature	5701 K
Total lumen output	579 lm
Efficiency	77 lm/W

Electrical measurement details

Input Power

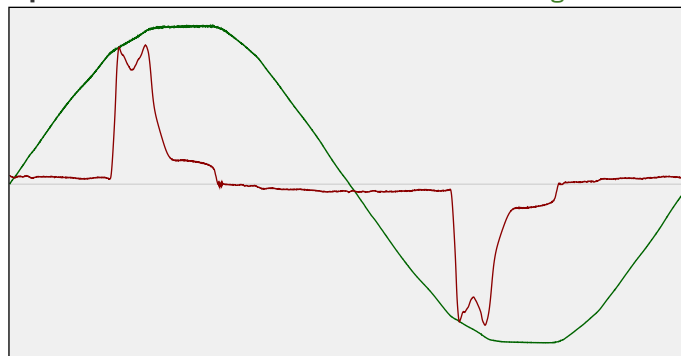
RMS Input voltage feed. V_{RMS}	234 V
RMS Input current feed. I_{RMS}	0.056 A
Total input power	7.5 W

Frequency of input power	50 Hz
Power factor	0.58
Displacement power factor	0.89

Total harmonic distortion of the current	114.14%
Total harmonic distortion of the voltage	2.13%

Input Power Curve

Voltage - Current



Efficiency

Radiated power efficiency: 25.3%



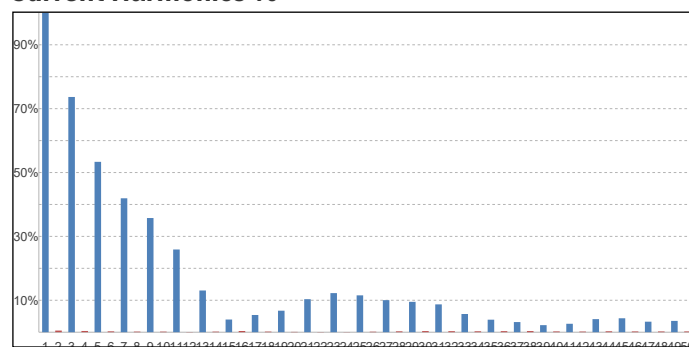
Lumen efficiency: 77 lm/W



Harmonics

3rd Harmonic	73.66%
5th Harmonic	53.35%
7th Harmonic	41.93%
9th Harmonic	35.75%
11th Harmonic	25.9%

Current Harmonics %



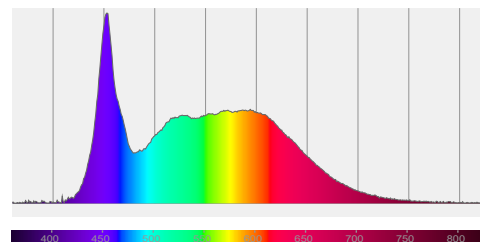
136-006 6000K specific configuration

Colour measurement details

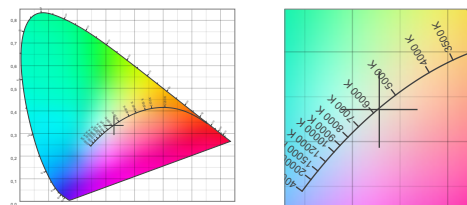
Total lumen output 579 lm
 Correlated Colour Temperature 5701 K
 Colour coordinates CIE 1931 (x;y) = (0.328;0.336)
 Colour deviation from BBL Duv = -0.0008

TM30-18 Colour Fidelity Index R_f 86.9
 TM30-18 Colour Gamut Index R_g 97.1
 Colour Rendering Index (Ra) CRI 88.9
 Colour Rendering Index. (red component) $R_9 = 35.3$

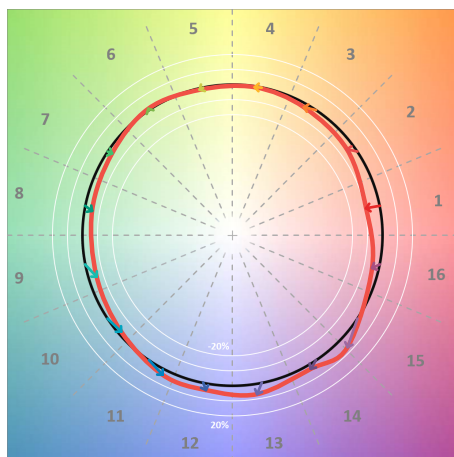
Colour Quality Scale CQS = 85.2
 Television Lighting Consistency Index TLCI = 85



Relative spectral power distribution



TM30 details

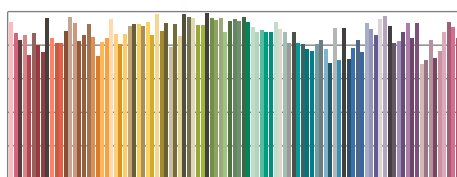


TM30 Colour vectors per hue bin

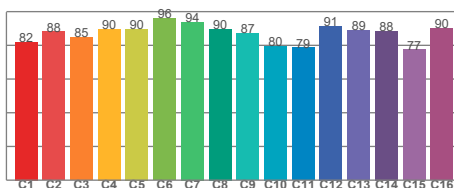


TM30 Colour distortion

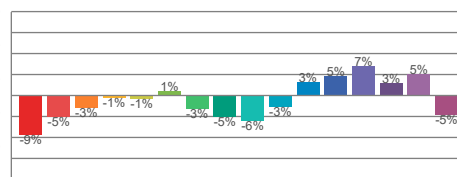
Hue Bin	R_f	Shifts (%)	
		Chroma	Hue
C1	82	-9%	0%
C2	88	-5%	5%
C3	85	-3%	8%
C4	90	-1%	5%
C5	90	-1%	3%
C6	96	1%	0%
C7	94	-3%	-1%
C8	90	-5%	2%
C9	87	-6%	10%
C10	80	-3%	12%
C11	79	3%	13%
C12	91	5%	3%
C13	89	7%	-5%
C14	88	3%	-6%
C15	77	5%	-19%
C16	90	-5%	-3%



TM30-18 R_f -values per reference colour

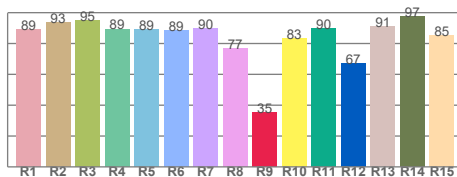


TM30-18 R_f -values per hue bin

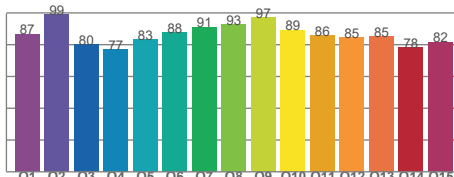


TM30 Chroma shift

Colour Quality details



Colour Rendering Index



Colour Quality Scale