

36 425 710 Product version up to 8/24/2020



- cover plate 150 x 90 mm
- temperature control handle with safety limit stop at 38°C
- hot water temperature limiter, can be preset
- WRAS



Chrome

36 425 710-00



Brushed Platinum

36 425 710-06

Required miscellaneous

xGRID Installation track 555 mm - 12 360 970 90



Required miscellaneous

Concealed thermostat with built-in isolators - 35 426 970 90



- min. recess depth 80 mm
- max. recess depth 136 mm

Recommended miscellaneous

xGRID Attachment set for integrating in the dry wall construction - 12 340 970 90



Required miscellaneous

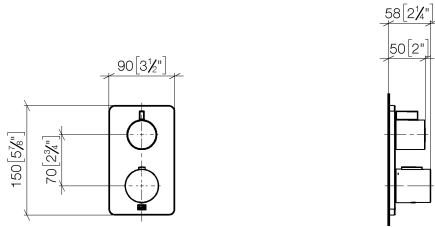
Concealed thermostat - 35 425 970 90



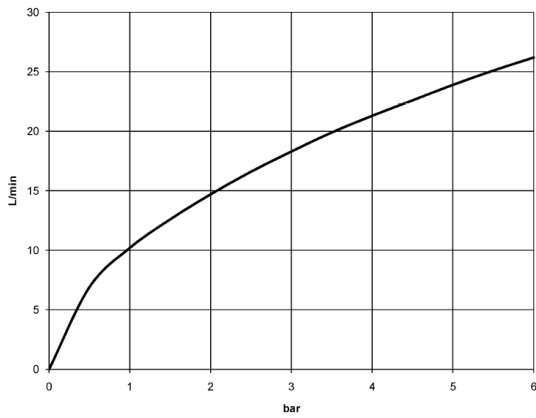
- min. recess depth 80 mm
- max. recess depth 136 mm

36 425 710 Product version up to 8/24/2020

mm [inches]



Flow rate chart



Codes & Standards

DIN 4109

EN 1111

ISO 3822

Scottish Water
Byelaws

UK Water Supply
Regulations

Ü-Zeichen

VA-Zeichen



LULU Concealed thermostat with one function volume control - Chrome

LULU

36 425 710 Product version up to 8/24/2020

Certificates and sustainability

LGA_19

ETA_20

LGA_19

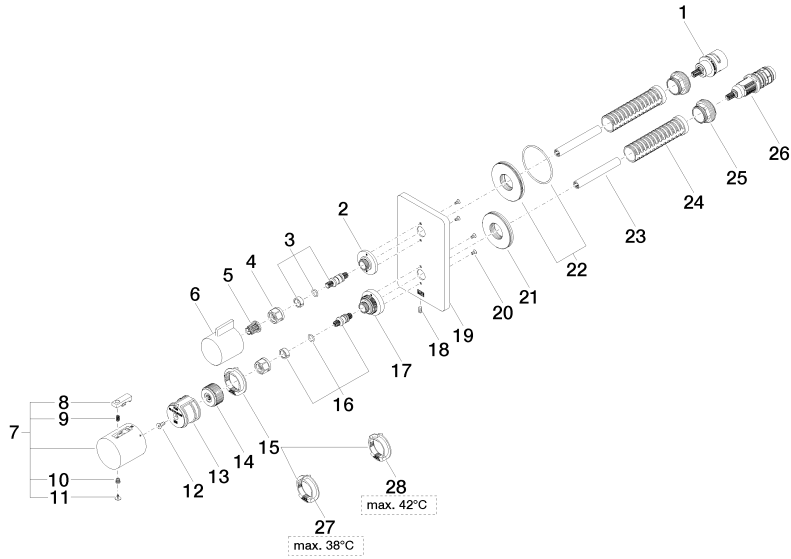
DVGW_DW-
6512DN0

WRAS_250402

EPD-DOR-20230287

-IBA1-EN

Environmental.prod
uct-declarat



Spare parts list

No.	Item Number	Name	Quantity used	Delivery time
12	90 30 30 124 00 90	Mounting Countersunk screw with hexagon socket M4 x 10 mm -	1.00	14
14	09 12 12 054 90	Handle mount Ø 28,50 x 16 mm -	1.00	14
22	90 30 01 190 00 90	Connection Ø 55 x 9 mm -	1.00	14
21	09 30 01 188 90	Connection Ø 52 x 9 mm -	1.00	-
Spare part can no longer be ordered, please order the replacement item				
09300129690		Shaft M24x1 Ø52 external -		
8	90 21 33 011 00-13	Repair kit for thermostat handle - black	1.00	14
1	90 90 03 166 00 90	Head part Temperature maintenance head part Lifetime 90° Motion -	1.00	14
13	90 12 12 052 00 90	Retainer -	1.00	14
20	09 30 30 157 90	Mounting Countersunk screw with hexagon socket M3 x 6 mm -	4.00	14
9	90 16 02 027 00 90	Spring Ø 4,5 x 7,5 mm -	1.00	14
24	90 18 40 077 01 90	Sleeve -	2.00	14
5	90 12 12 002 00 90	Fixing cap white Ø 15 x 12 mm -	1.00	14
11	90 31 20 049 00-00	Plug - Chrome	1.00	20
19	09 11 02 246-00	Rosette 150 x 90 x 9 mm - Chrome	1.00	20
7	90 17 33 004 00-00	Handle for thermostat Ø 46 x 48 mm - Chrome	1.00	-
Spare part can no longer be ordered, please order the replacement item				
90173302000-00		Handle for thermostat Ø 46 x 48 mm - Chrome		
15	09 28 10 143 90	Limiting ring Ø 38 x 8 mm -	1.00	-
Spare part can no longer be ordered, please order the replacement item				
09281018790		Temperature limitation ring Thermostat -		
4	90 23 30 023 00 90	Cap nut -	2.00	14
6	09 20 67 006-00	Handle for thermostat 41 x 40 x 53 mm - Chrome	1.00	82
23	90 23 01 124 00 90	Sleeve -	2.00	14
25	09 24 04 257 90	Mounting Nut Ø 32 x 19,5 mm -	2.00	14
17	09 12 12 051-00	Fixing cap mount Ø 35 x 26,5 mm - Chrome	1.00	20
3	04 29 06 111 01-00	Spindle with double toothing Ø 12,15 x 37,2 mm - Chrome	1.00	20
2	09 12 12 053-00	Fixing cap mount Ø 34,5 x 15 mm - Chrome	1.00	20
18	09 31 11 134 90	Mounting Threaded pin with hexagon socket with point M4 x 10 mm -	1.00	14
26	90 15 02 012 00 90	Thermostat cartridge Ø 27 x 82 mm, 16-18 l/min. -	1.00	-
Spare part can no longer be ordered, please order the replacement item				
9015020130090		Thermostat cartridge Ø 27 x 82 mm, 16-18 l/min. -		
28	09 28 10 151 90	Insert up to 42°C Ø 38 x 8 mm -	1.00	-
Spare part can no longer be ordered, please order the replacement item				
09281018990		Temperature limitation ring Thermostat, black -		
10	90 30 30 136 00 90	Bolt -	1.00	14
16	04 29 06 024 01-00	Spindle with double toothing Ø 12,15 x 30 mm - Chrome	1.00	20
27	09 28 10 150 90	Limiting ring up to 38°C Ø 38 x 8 mm -	1.00	-
Spare part can no longer be ordered, please order the replacement item				
09281018890		Temperature limitation ring Thermostat, 38° stop -		