

**TARA Wall-mounted bridge mixer with extending spout - Brushed Durabronze (23kt Gold)**

TARA

31 151 892 Product version from 1/1/2025



- 365-545mm projection
- pivoting spout
- laminar flow
- 1/2" connection
- gauge 150 mm - 10 mm
- max. flow 8.3 l/min at 3 bar flow pressure
- lead-free
- This product can help a building meet the requirements of Green Building Rating Systems, e.g. LEED®, BREEAM®, DGNB

	Brushed Durabronze (23kt Gold)	31 151 892-28
	Chrome	31 151 892-00
	Brushed Platinum	31 151 892-06
	Platinum	31 151 892-08
	Durabronze (23kt Gold)	31 151 892-09
	Dark Chrome	31 151 892-19
	Brushed Dark Brass (PVD)	31 151 892-39
	Brushed Bronze (PVD)	31 151 892-42
	Brushed Dark Bronze (PVD)	31 151 892-43
	Brushed Champagne (22kt Gold)	31 151 892-46
	Champagne (22kt Gold)	31 151 892-47
	Brushed Chrome	31 151 892-93
	Brushed Dark Platinum	31 151 892-99

**Recommended miscellaneous**

**Dispenser with rosette - Brushed Durabronze (23kt Gold)** 82 444 970-28



**Recommended miscellaneous**

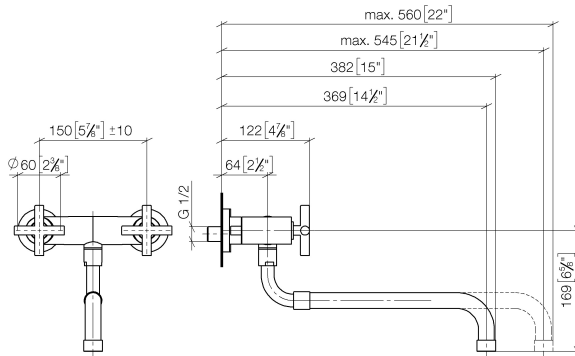
**Strainer waste with control handle - Brushed Durabronze (23kt Gold)** 10 710 970-28



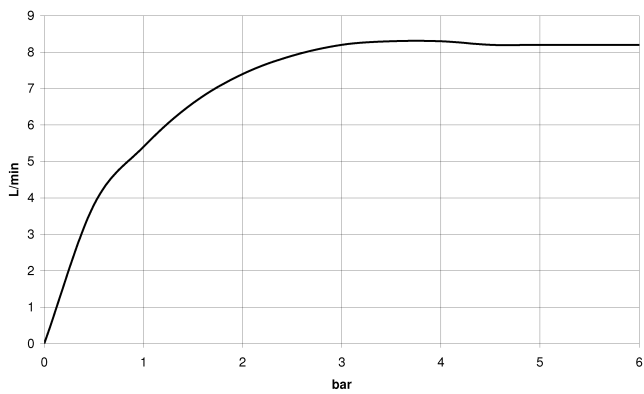
**TARA Wall-mounted bridge mixer with extending spout - Brushed Durabronz  
(23kt Gold)**

TARA

31 151 892 Product version from 1/1/2025  
mm [inches]



**Flow rate chart**



**Codes & Standards**

DIN 4109

ISO 3822

Ü-Zeichen



TARA Wall-mounted bridge mixer with extending spout - Brushed Durabross  
(23kt Gold)

TARA

---

31 151 892 Product version from 1/1/2025

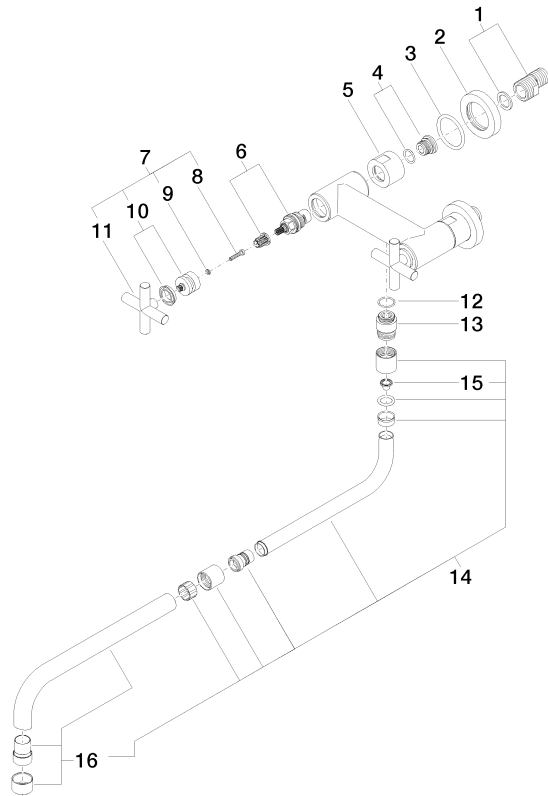
Certificates and sustainability

---

LGA\_19            EPD-DOR-20230287  
                      -IBA1-EN  
                      Environmental.prod  
                      uct-declarat

31 151 892 Product version from 1/1/2025

Parts for other finishes can be found here: [Chrome](#)



## Spare parts list

No.	Item Number	Name	Quantity used	Delivery time
8	90 30 30 075 00 90	Mounting Cylinder head screw with hexagon socket Low profile M4 x 20 mm -	2.00	14
2	09 27 89 004-28	Rosette Ø 60 x 11 mm - Brushed Durabron (23kt Gold)	2.00	40
1	04 11 04 003 00 90	S-connection 1 pair G3/4-AG x G1/2-AG -	2.00	14
11	09 20 89 010-28	Handle 70 x 70 x 22,5 mm - Brushed Durabron (23kt Gold)	2.00	-
Spare part can no longer be ordered, please order the replacement item				
	90208901010-28	Handle TARA - Brushed Durabron (23kt Gold)		
16	90 28 25 076 00-28	Spout Ø 22 x 256 mm - Brushed Durabron (23kt Gold)	1.00	40
3	09 14 10 041 90	O-Ring 39,0 x 4,0 mm -	2.00	14
4	04 29 05 014 00 90	Connection M18 x 1,5 -	2.00	14
7	90 20 89 010 10-28	Handle TARA - Brushed Durabron (23kt Gold)	2.00	40
10	90 12 12 007 00-28	Handle Socket retainer Ø 29 x 26 mm - Brushed Durabron (23kt Gold)	2.00	40
5	09 23 30 012-28	Mounting for extending spout 3/4" - Brushed Durabron (23kt Gold)	2.00	40
6	90 90 03 131 00 90	Head part clockwise closing 1/2" -	2.00	14
9	90 30 11 029 00 90	Connection Spring lock washer Ø 4 -	2.00	14
14	04 28 25 075 00-28	Spout for sink unit wall mounting extending Ø 18 x 225 mm - Brushed Durabron (23kt Gold)	1.00	40
13	09 24 03 093 10-28	Nipple Ø 25 x 31 mm - Brushed Durabron (23kt Gold)	1.00	40
12	90 14 10 032 00 90	O-Ring 18,1 x 1,6 mm -	1.00	14
15	09 29 03 027 90	Sieve seal Ø 15 x 10 mm -	1.00	14