

## 127-086 WW specific configuration

### Introduction

#### Purpose of this Document

This document provides information for 127-086 WW. During measurement, the product is used in a different mode where output power, colour temperature and/or beam angle are changed from factory standard. These adjustments can be made without altering the product and are designed to be set by the installer. In most cases, the options are set through switches on the product.

#### Results

Total input power	4.0 W
Correlated Colour Temperature	2914 K
Total lumen output	328 lm
Efficiency	83 lm/W

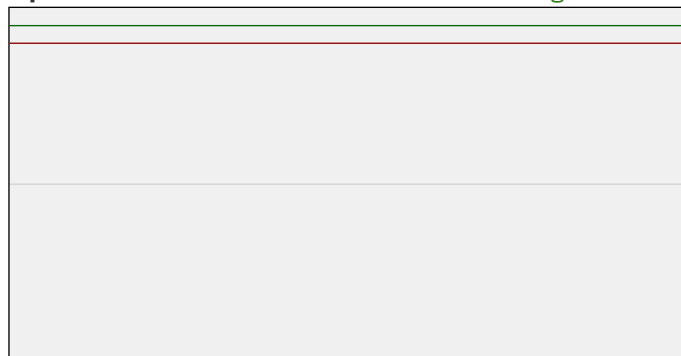
### Electrical measurement details

#### Input Power

RMS Input voltage feed. $V_{RMS}$	24.0 V
RMS Input current feed. $I_{RMS}$	0.165 A
Total input power	4.0 W
Frequency of input power	0 Hz
Power factor	1.0
Displacement power factor	0.7
Total harmonic distortion of the current	0%
Total harmonic distortion of the voltage	0%

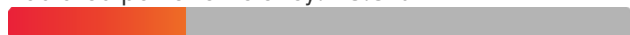
#### Input Power Curve

Voltage - Current



#### Efficiency

Radiated power efficiency: 28.8%



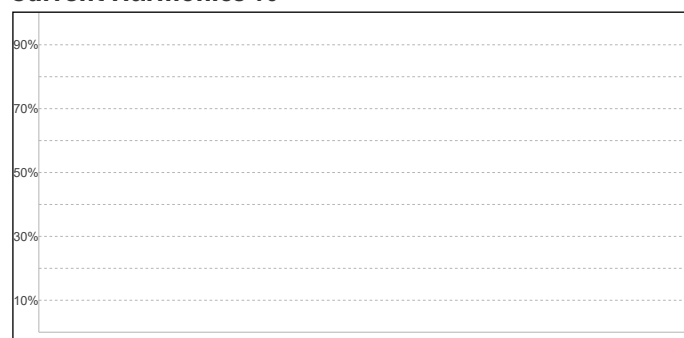
Lumen efficiency: 83 lm/W



#### Harmonics

3rd Harmonic	n/a
5th Harmonic	n/a
7th Harmonic	n/a
9th Harmonic	n/a
11th Harmonic	n/a

#### Current Harmonics %



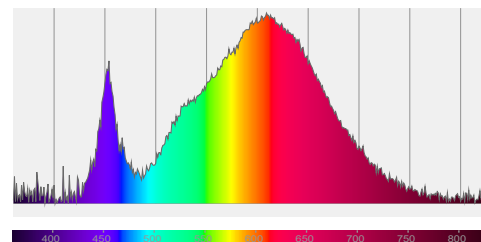
## 127-086 WW specific configuration

### Colour measurement details

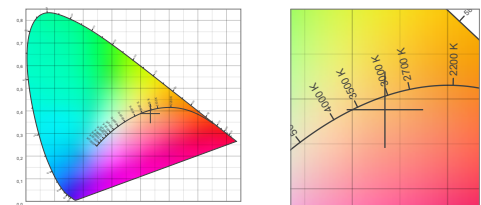
Total lumen output 328 lm  
 Correlated Colour Temperature 2914 K  
 Colour coordinates CIE 1931 (x;y) = (0.434;0.388)  
 Colour deviation from BBL Duv = -0.0061

TM30-18 Colour Fidelity Index  $R_f$  83.5  
 TM30-18 Colour Gamut Index  $R_g$  100.8  
 Colour Rendering Index (Ra) CRI 85.4  
 Colour Rendering Index. (red component)  $R_9 = 34.0$

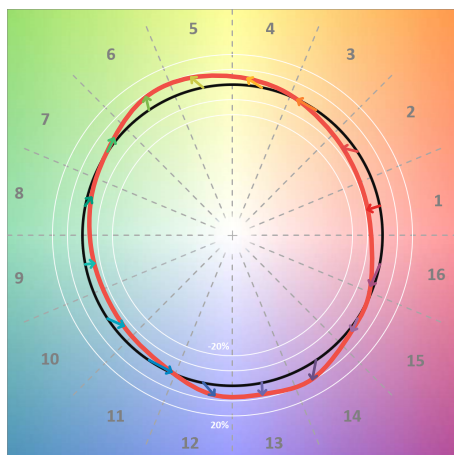
Colour Quality Scale CQS = 81.0  
 Television Lighting Consistency Index TLCI = 71



Relative spectral power distribution



### TM30 details

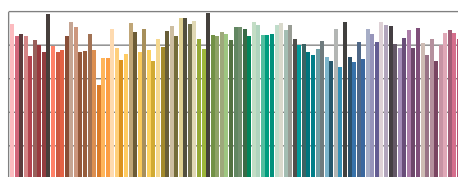


TM30 Colour vectors per hue bin

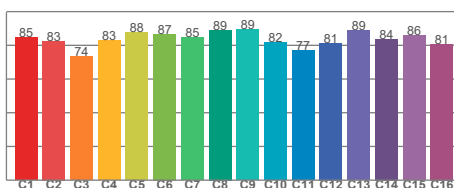


TM30 Colour distortion

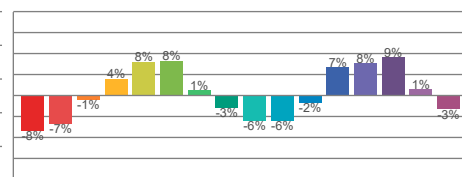
Hue Bin	$R_f$	Shifts (%)	
		Chroma	Hue
C1	85	-8%	-1%
C2	83	-7%	7%
C3	74	-1%	14%
C4	83	4%	10%
C5	88	8%	6%
C6	87	8%	-3%
C7	85	1%	-9%
C8	89	-3%	-6%
C9	89	-6%	0%
C10	82	-6%	10%
C11	77	-2%	17%
C12	81	7%	9%
C13	89	8%	-1%
C14	84	9%	-9%
C15	86	1%	-9%
C16	81	-3%	-15%



TM30-18  $R_f$ -values per reference colour

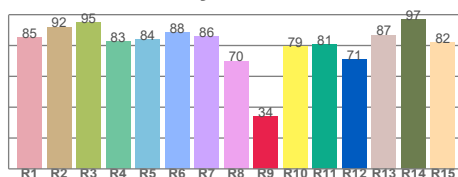


TM30-18  $R_f$ -values per hue bin

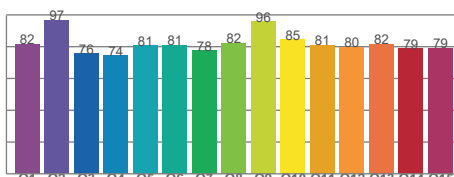


TM30 Chroma shift

### Colour Quality details



Colour Rendering Index



Colour Quality Scale