


35 531 970 90 Product version up to 11/25/2021




- red brass, lead-free
- 2x back flow preventer
- 2x female thread 3/4" connections
- 1x female thread 3/4" outlet for additional valves
- 3x female thread 3/4" outlet, right/left alternatively
- 4x dust cover
- 4x anti-water packing
- soundproofing
- gauge 120 mm
- suitable for xGRID (when using installation track + 12 mm recess depth)
- WRAS


Recommended miscellaneous

	xGRID Attachment set for integrating in the dry wall construction -	12 340 970 90
-----------------------------------------------------------------------------------	----------------------------------------------------------------------------	---------------


Required miscellaneous

	xGRID Installation track 555 mm -	12 360 970 90
-----------------------------------------------------------------------------------	------------------------------------------	---------------


Recommended miscellaneous

	Pre-seal for xTOOL -	90 29 05 031 00 90
------------------------------------------------------------------------------------	-----------------------------	-----------------------

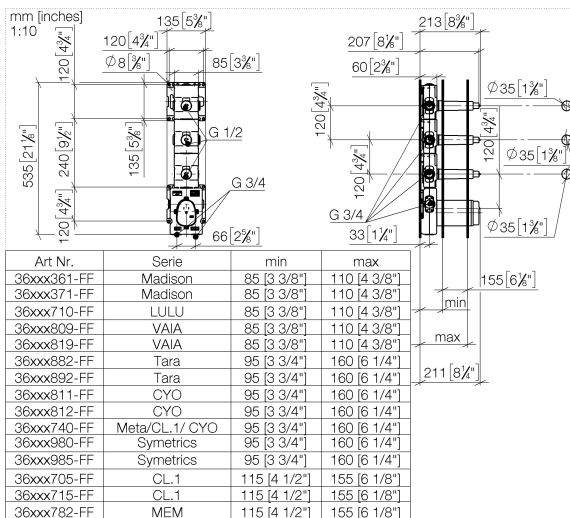
Recommended miscellaneous

	Extension 28 mm -	12 177 970 90
------------------------------------------------------------------------------------	--------------------------	---------------

Recommended miscellaneous

	Extension 46 mm -	12 178 970 90
-------------------------------------------------------------------------------------	--------------------------	---------------

35 531 970 90 Product version up to 11/25/2021



Codes & Standards

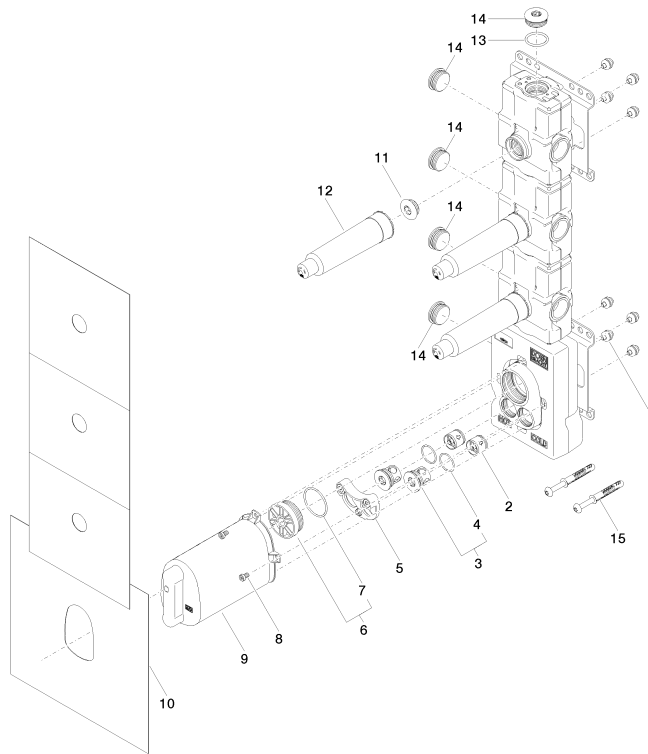
EN 1111	EN 1717	Scottish Water Byelaws	UK Water Supply Regulations
---------	---------	------------------------	-----------------------------

XP P 41-280

Certificates and sustainability

WRAS_2011	Belgaqua_21-031-2	ACS_21 ACC LY	DVGW_DW-6512DN0	EPD-DOR-20230287 -IBA1-EN Environmental.prod uct-declarat
-----------	-------------------	---------------	-----------------	--------------------------------------------------------------------

Belgaqua_25-343-2



Spare parts list

No.	Item Number	Name	Quantity used	Delivery time
	13 09 14 10 009 90	O-Ring NBR 70 24,0 x 2,5 mm -	1.00	14
	1 90 23 01 091 00 90	Attachment set Bolt/nut with damping Ø 127 x Ø 6 x 8 mm -	8.00	14
	3 04 21 34 077 00 90	Plug for xTOOL Ø 27 x 23 mm -	2.00	14
	6 04 31 20 100 00 90	Plug M42 x 1,5 -	1.00	14
	10 04 14 03 073 07 90	sealing kit for xTool, 3 outlets -	1.00	14
	2 90 23 01 045 00 90	Back-flow preventer Ø 20 x 18 mm, without limitation -	2.00	14
	11 04 31 20 006 00 90	Plug 1/2" -	3.00	14
	7 09 14 10 111 90	O-Ring 36,0 x 2,0 mm -	1.00	14
	9 04 21 02 174 01 90	Cap -	1.00	14
	5 90 12 12 218 00 90	Adapter -	1.00	14
	15 04 30 31 054 00 90	Attachment set Wood screw with dowel 6 x 70 mm -	2.00	14
	14 09 31 20 003 90	Plug 3/4" -	5.00	14
	4 09 14 10 098 90	O-Ring 22,0 x 1,6 mm -	2.00	14
	8 09 30 30 169 90	Bolt -	4.00	14
	12 90 21 02 190 00 90	Waterproofing cover for wall valve Ø 37 x 149 mm -	3.00	14