

36 426 670 Product version up to 5/15/2020



- rotary diverter with volume control and shut-off function
- cover plate 150 x 90 mm
- temperature control handle with safety limit stop at 38°C
- hot water temperature limiter, can be preset
- WRAS

|   |                               |               |
|---|-------------------------------|---------------|
|    | Platinum                      | 36 426 670-08 |
|    | Chrome                        | 36 426 670-00 |
|    | Brushed Platinum              | 36 426 670-06 |
|    | Dark Chrome                   | 36 426 670-19 |
|    | Brushed Light Gold (PVD)      | 36 426 670-27 |
|    | Brushed Durabrass (23kt Gold) | 36 426 670-28 |
|    | Matte Black                   | 36 426 670-33 |
|    | Brushed Gold (PVD)            | 36 426 670-37 |
|    | Brushed Dark Brass (PVD)      | 36 426 670-39 |
|  | Brushed Bronze (PVD)          | 36 426 670-42 |
|  | Brushed Dark Bronze (PVD)     | 36 426 670-43 |
|  | Brushed Champagne (22kt Gold) | 36 426 670-46 |
|  | Champagne (22kt Gold)         | 36 426 670-47 |
|  | Brushed Chrome                | 36 426 670-93 |
|  | Brushed Dark Platinum         | 36 426 670-99 |

**Required miscellaneous**



**Concealed thermostat with built-in isolators -** 35 426 970 90  
 •min. recess depth 80 mm  
 •max. recess depth 136 mm

**Required miscellaneous**



**Concealed thermostat -** 35 425 970 90  
 •min. recess depth 80 mm  
 •max. recess depth 136 mm

**Required miscellaneous**



**xGRID Installation track 555 mm -** 12 360 970 90

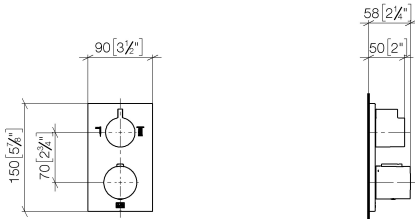
**Recommended miscellaneous**



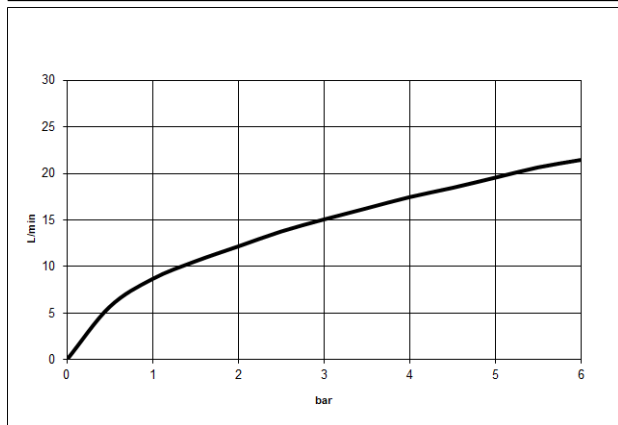
**xGRID Attachment set for integrating in the dry wall construction -** 12 340 970 90

36 426 670 Product version up to 5/15/2020

mm [inches]



Flow rate chart



Codes & Standards

DIN 4109

EN 1111

ISO 3822

Scottish Water  
Byelaws

UK Water Supply  
Regulations

Ü-Zeichen

VA-Zeichen

XP P 41-280



## Concealed thermostat with two function volume control - Platinum

SERIES SPECIFIC

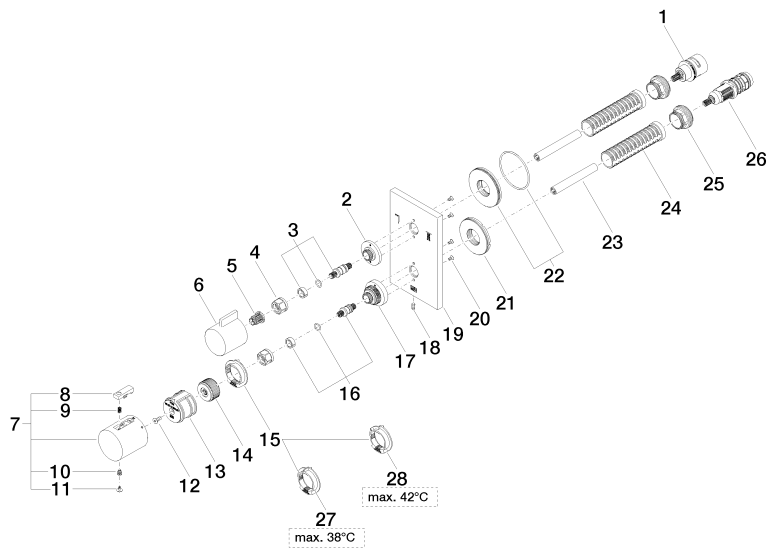
36 426 670 Product version up to 5/15/2020

### Certificates and sustainability

---

|               |  |        |        |                 |
|---------------|--|--------|--------|-----------------|
| ACS_20 ACC LY | LGA_19   | ETA_20 | LGA_19 | DVGW_DW-6512DN0 |
| WRAS_250402   | EPD-DOR-20230287<br>-IBA1-EN<br>Environmental.prod<br>uct-declarat |        |        |                 |

36 426 670 Product version up to 5/15/2020



Spare parts list

| No.  | Item Number        | Name  | Quantity used | Delivery time |
|--|--------------------|---|---------------|---------------|
| 27   | 09 28 10 150 90    | Limiting ring up to 38°C Ø 38 x 8 mm -                            | 1.00          | -             |
| Spare part can no longer be ordered, please order the replacement item |                    |   |               |               |
|  | 09281018890        | Temperature limitation ring Thermostat, 38° stop -                |               |               |
| 2  | 09 12 12 053-08    | Fixing cap mount Ø 34,5 x 15 mm - Platinum                        | 1.00          | 54            |
| 26   | 90 15 02 012 00 90 | Thermostat cartridge Ø 27 x 82 mm, 16-18 l/min. -                 | 1.00          | -             |
| Spare part can no longer be ordered, please order the replacement item |                    |   |               |               |
|  | 9015020130090      | Thermostat cartridge Ø 27 x 82 mm, 16-18 l/min. -                 |               |               |
| 18   | 09 31 11 134 90    | Mounting Threaded pin with hexagon socket with point M4 x 10 mm - | 1.00          | 14            |
| 14   | 09 12 12 054 90    | Handle mount Ø 28,50 x 16 mm -                                    | 1.00          | 14            |
| 5  | 90 12 12 002 00 90 | Fixing cap white Ø 15 x 12 mm -                                   | 1.00          | 14            |
| 8  | 90 21 33 011 00-13 | Repair kit for thermostat handle - black                          | 1.00          | 14            |
| 1  | 90 90 03 163 00 90 | Diverter 180° Lifetime Ø 29 x 57 mm -                             | 1.00          | 14            |
| 13   | 90 12 12 052 00 90 | Retainer -  | 1.00          | 14            |
| 19   | 09 11 02 233-08    | Rosette with symbols 90 x 150 x 9 mm - Platinum                   | 1.00          | 54            |
| 16   | 04 29 06 024 01-00 | Spindle with double toothing Ø 12,15 x 30 mm - Chrome             | 1.00          | 20            |
| 17   | 09 12 12 051-08    | Fixing cap mount Ø 35 x 26,5 mm - Platinum                        | 1.00          | 54            |
| 21   | 09 30 01 296 90    | Shaft M24x1 Ø52 external -  | 1.00          | 14            |
| 6  | 09 20 67 006-08    | Handle for thermostat 41 x 40 x 53 mm - Platinum                  | 1.00          | 82            |
| 28   | 09 28 10 151 90    | Insert up to 42°C Ø 38 x 8 mm -                                   | 1.00          | -             |
| Spare part can no longer be ordered, please order the replacement item |                    |   |               |               |
|  | 09281018990        | Temperature limitation ring Thermostat, black -                   |               |               |
| 7  | 90 17 33 004 00-08 | Handle for thermostat Ø 46 x 48 mm - Platinum                     | 1.00          | -             |
| Spare part can no longer be ordered, please order the replacement item |                    |   |               |               |
|  | 90173302000-08     | Handle for thermostat Ø 46 x 48 mm - Platinum                     |               |               |
| 15   | 09 28 10 143 90    | Limiting ring Ø 38 x 8 mm -                                       | 1.00          | -             |
| Spare part can no longer be ordered, please order the replacement item |                    |   |               |               |
|  | 09281018790        | Temperature limitation ring Thermostat -                          |               |               |
| 12   | 90 30 30 124 00 90 | Mounting Countersunk screw with hexagon socket M4 x 10 mm -       | 1.00          | 14            |
| 10   | 90 30 30 136 00 90 | Bolt -  | 1.00          | 14            |
| 24   | 90 18 40 077 01 90 | Sleeve -  | 2.00          | 14            |
| 3  | 04 29 06 111 01-00 | Spindle with double toothing Ø 12,15 x 37,2 mm - Chrome           | 1.00          | 20            |
| 20   | 09 30 30 157 90    | Mounting Countersunk screw with hexagon socket M3 x 6 mm -        | 4.00          | 14            |
| 9  | 90 16 02 027 00 90 | Spring Ø 4,5 x 7,5 mm -   | 1.00          | 14            |
| 22   | 90 30 01 190 00 90 | Connection Ø 55 x 9 mm -  | 1.00          | 14            |
| 23   | 90 23 01 124 00 90 | Sleeve -  | 2.00          | 14            |
| 25   | 09 24 04 257 90    | Mounting Nut Ø 32 x 19,5 mm -                                     | 2.00          | 14            |
| 4  | 90 23 30 023 00 90 | Cap nut -   | 2.00          | 14            |
| 11   | 90 31 20 049 00-13 | Plug - black  | 1.00          | 40            |