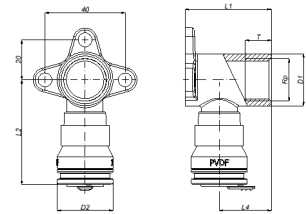


2S-1604K: Backplate elbow female short model 16x1/2"



Commercial information

The Henco Vision fitting is entirely made from PVDF, a high-performance material. Some key advantages of these push fittings are:

- Fast and easy installation
- Pressing machines or wrenches are not required
- For both sanitary and central heating applications
- 100% embedding guaranteed

Advantages of PVDF

- Highly resistant to pressure and temperature
- Excellent mechanical strength
- Extreme flexibility: bending up to 10° is possible
- Perfectly suited for drinking water and foodstuffs
- Embedding is possible without extra protection
- Highly resistant to chemicals and corrosion

Basic unit dimensions

Height	43 mm
Length	79 mm
Width	52 mm
Net weight	0.162 kg

Certificates

KIWA, KOMO, DVGW Wasser, GOST-R, QB (CSTBat), ATG, WRAS, ÖVGW Wasser, AFNOR, SINTEF, ETA, STF, RISE, ACS, PZH, TSU, EMI

Applications

Potable water, Heating, Cooling, Sanitary

Solutions

Building installations, Industry, Utility

Technical characteristics

Housing material	Brass	Outer pipe diameter connection	16 Millimetre
Housing material	Brass	Medium temperature (continuous)	-10 70 Degrees celsius
Surface protection	Untreated	Max. operating pressure at 20 °C	10 Bar
System specific	✓		
Connection	Insert (push-fitting)		
KIWA certified	✓		