

# ABB-Welcome

83110-500  
Audio integration unit



83111-500  
Extension unit



83501-101-500  
Camera integration module



# ABB-Welcome

---

1	Safety .....	3
2	Intended use .....	3
3	Environment.....	4
3.1	ABB devices .....	4
4	Operation.....	5
4.1	Control elements.....	5
4.2	Setting address.....	7
4.2.1	physical address mode.....	7
4.2.2	Mapping address mode.....	8
4.2.3	To set function of 1st/2nd button.....	9
5	Technical data.....	11
5.1	Overview table .....	11
6	Mounting/Installation .....	12
6.1	Requirements for the electrician.....	12
6.2	General installation instructions .....	13

## 1 Safety



### Warning

#### **Electric voltage!**

Dangerous currents flow through the body when coming into direct or indirect contact with live components.

This can result in electric shock, burns or even death.

- Disconnect the mains power supply prior to installation and/or disassembly!
- Permit work on the 110-240 V supply system to be performed only by specialist staff!

## 2 Intended use

The audio module assembly serves as voice and reception device for installing in a suitable door and letter box system.

The 83110 ...audio integration unit is an integral part of the ABB-Welcome door communication system and operates exclusively with components from this system. The device must only be installed in suitable housings such as flush-mounted letter boxes or door systems.

The Extension Unit serves for connecting a maximum of 12 additional doorbell buttons and an audio module assembly.

Camera module extends audio module assembly with video function.

The built-in keypad extension 83311 ... is part of the ABB-Welcome door communication system and operates exclusively with the components of this system. The device must only be installed in suitable housings such as flush-mounted letter boxes or door systems.

### 3 Environment



#### **Consider the protection of the environment!**

Used electric and electronic devices must not be disposed of with domestic waste.

- The device contains valuable raw materials which can be recycled. Therefore, dispose of the device at the appropriate collecting facility.

#### 3.1 ABB devices

All packaging materials and devices from ABB bear the markings and test seals for proper disposal. Always dispose of the packaging material and electric devices and their components via the authorized collecting facilities and disposal companies.

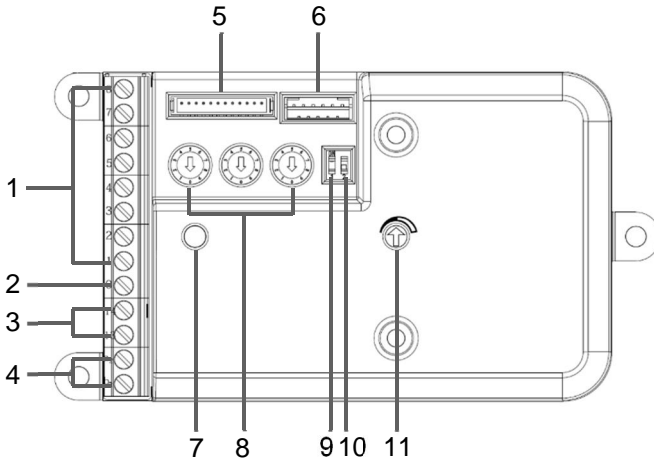
ABB products meet the legal requirements, in particular the laws governing electronic and electrical devices and the REACH ordinance.

(EU-Directive 2002/96/EG WEEE and 2002/95/EG RoHS)

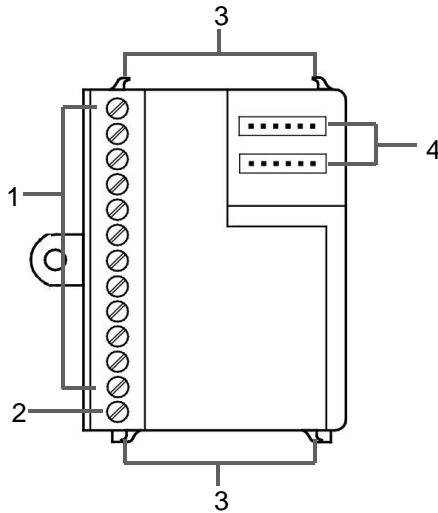
(EU-REACH ordinance and law for the implementation of the ordinance (EG) No.1907/2006)

4 Operation

4.1 Control elements



No.	Functions
1	Terminals to connect the mechanical buttons
2	Connecting terminal for common dimensions
3	Relay out (fix as 3s)
4	Bus
5	Connection for camera module
6	Connection for extension unit
7	Microphone adjustment
8	Three rotary switches to set the address
9	Bell button tone on/off
10	Function of 1st/2nd pushbutton
11	Adjust the speaker volume



No.	Functions
1	Terminals to connect the mechanical buttons
2	Connecting terminal for common dimensions
3	Clamps for coupling several modules
4	Connections for audio integration unit and further extension unit.

Camera module extends audio module assembly with video function.

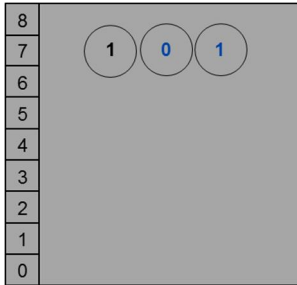
- Video camera with automatic day/night switchover and infrared LEDs to illuminate the night shots.
- Installed heating to keep the lens free of condensation.
- Vertical/horizontal detection angle: 86°/67°
- Setting angle horizontal/vertical: +/-15°, mechanically adjustable
- Consumer units: 4
- Temperature range (Device): -25 °C - +55 °CC

## 4.2 Setting address

### 4.2.1 physical address mode

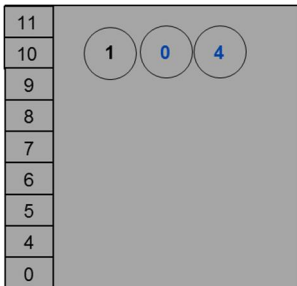
1) The address of each button is generated automatically:

Button 1 is #01, button 2 is #02, etc.



2) The start address of button 1 can be shifted by use of the last 2 potentiometers.

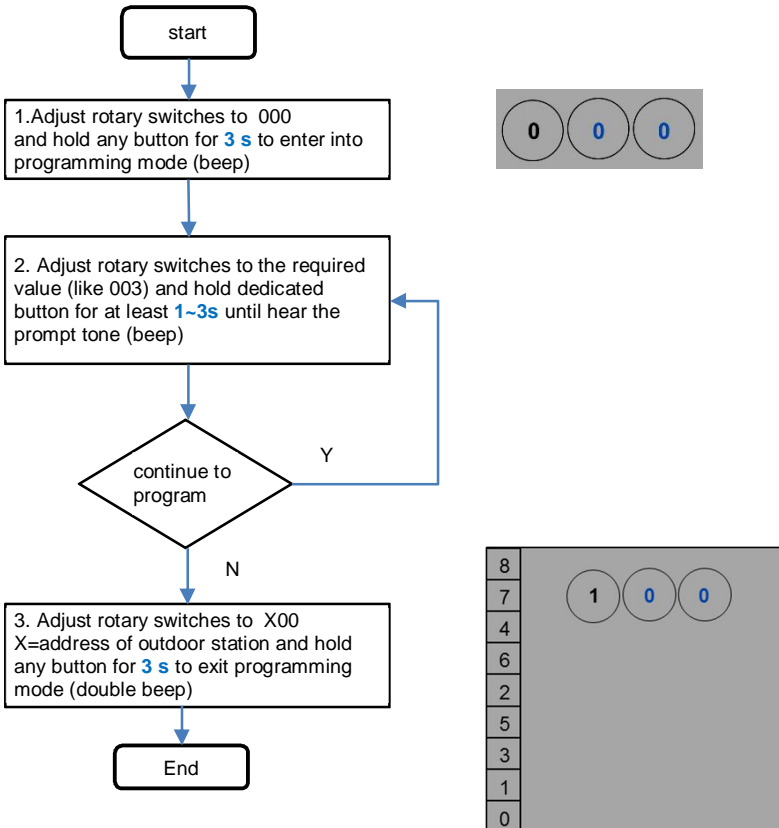
For example, the last 2 rotary switches is 04, then button 1 = 04, button 2 = 05...



By default, the last 2 rotary switches is 01

### 4.2.2 Mapping address mode

The address of each button can be set disorderly one by one, such as button 1=001, button 2=003, button 3=005, button 4=002 ...

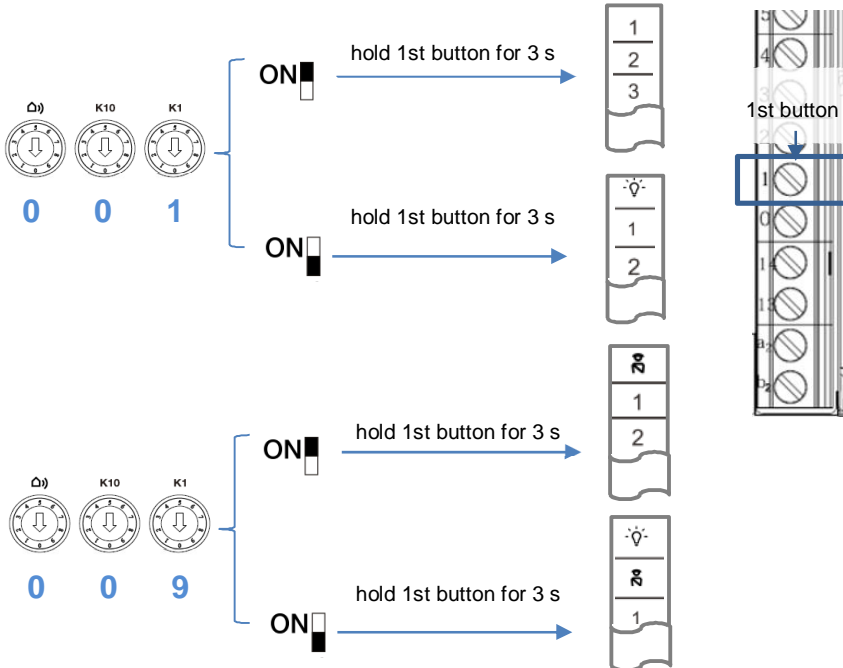


If the last two rotary switches are set to 00, the device will work in the mapping addressing mode, otherwise, it will work in the physical addressing mode.

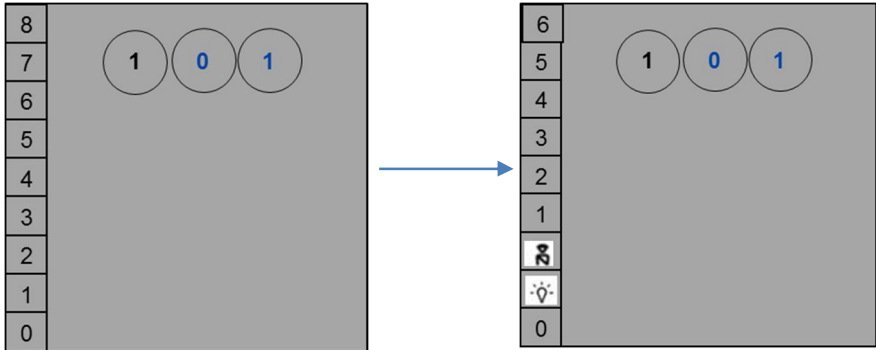


4.2.3 To set function of 1st/2nd button

4.2.3.1 Function setting

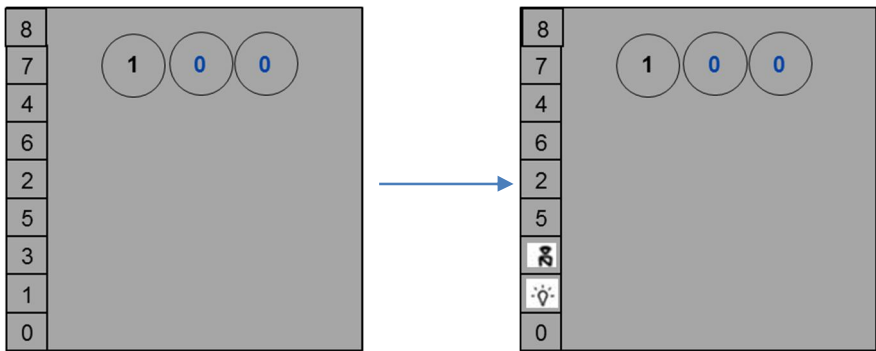


4.2.3.2 1st/2nd button setting in physical address mode



After set the 1st/2nd button, the address of the remain buttons are offset.

4.2.3.3 1st/2nd button setting in mapping address mode



After set the 1st/2nd button, the address of the remain buttons are fixed.

## 5 Technical data

### 5.1 Overview table

<b>Designation</b>	<b>Value</b>
Operating temperature	-25 °C - +55 °C
Storage temperature	-40 °C - +70 °C
Protection	IP 44
Single-wire clamps	2 x 0.28 mm <sup>2</sup> - 2 x 0.75 mm <sup>2</sup>
Fine-wire clamps	2 x 0.28 mm <sup>2</sup> - 2 x 0.75 mm <sup>2</sup>
Bus voltage	20-30 V DC
Product dimensions	83110: 68 mm x 126 mm x 31 mm 83111: 68 mm x 50 mm x 24 mm

## 6 Mounting/Installation



### Warning

#### Electric voltage!

Dangerous currents flow through the body when coming into direct or indirect contact with live components.

This can result in electric shock, burns or even death.

- Disconnect the mains power supply prior to installation and/or disassembly!
- Permit work on the 110-240 V supply system to be performed only by specialist staff!

### 6.1 Requirements for the electrician



### Warning

#### Electric voltage!

Install the device only if you have the necessary electrical engineering knowledge and experience.

- Incorrect installation endangers your life and that of the user of the electrical system.
- Incorrect installation can cause serious damage to property, e.g. due to fire.

The minimum necessary expert knowledge and requirements for the installation are as follows:

- Apply the "five safety rules" (DIN VDE 0105, EN 50110):
  1. Disconnect from power;
  2. Secure against being re-connected;
  3. Ensure there is no voltage;
  4. Connect to earth;
  5. Cover or barricade adjacent live parts.
- Use suitable personal protective clothing.
- Use only suitable tools and measuring devices.
- Check the type supply network (TN system, IT system, TT system) to secure the following power supply conditions (classic connection

to ground, protective earthing, necessary additional measures, etc.).

## 6.2 General installation instructions

- Terminate all branches of the wiring system via a connected bus device (e.g., indoor station, outdoor station, system device).
- Do not install the system controller directly next to the bell transformer and other power supplies (to avoid interference).
- Do not install the wires of the system bus together with 100-240 V wires.
- Do not use common cables for the connecting wires of the door openers and wires of the system bus.
- Avoid bridges between different cable types.
- Use only two wires for the system bus in a four-core or multi-core cable.
- When looping, never install the incoming and outgoing bus inside the same cable.
- Never install the internal and external bus inside the same cable.
- For optimum tone quality ensure that the module is seated correctly. Press the microphone with the microphone adjuster directly against the voice plate.

## **Notice**

We reserve the right to at all times make technical changes as well as changes in the contents of this document without prior notice.

The detailed specifications agreed to at the time of ordering apply to all orders. ABB accepts no responsibility for possible errors or incompleteness in this document.

We reserve all rights to this document and the topics and illustrations contained therein. The document and its contents, or extracts thereof, must not be reproduced, transmitted or reused by third parties without prior written consent by ABB.