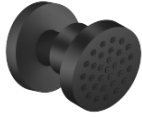


28 518 979 Product version from 4/1/2024



- spray head Ø 55mm
- ball-joint pivotable through 25° (in any direction)
- HORIZONTAL RAIN, max. flow rate 5 l/min (at 3 bar)
- with anti-scale system

Technical data:

- rosette Ø 55 mm
- 1/2" connection

Notes:

- This product can help a building meet the requirements of Green Building Rating Systems, e.g. LEED®, BREEAM®, DGNB

	Matte Black	28 518 979-33
	Chrome	28 518 979-00
	Brushed Platinum	28 518 979-06
	Platinum	28 518 979-08
	Durabronze (23kt Gold)	28 518 979-09
	Dark Chrome	28 518 979-19
	Light Gold (PVD)	28 518 979-26
	Brushed Light Gold (PVD)	28 518 979-27
	Brushed Durabronze (23kt Gold)	28 518 979-28
	Brushed Gold (PVD)	28 518 979-37
	Brushed Dark Brass (PVD)	28 518 979-39
	Brushed Bronze (PVD)	28 518 979-42
	Brushed Dark Bronze (PVD)	28 518 979-43
	Brushed Champagne (22kt Gold)	28 518 979-46
	Champagne (22kt Gold)	28 518 979-47
	Brushed Chrome	28 518 979-93
	Brushed Dark Platinum	28 518 979-99

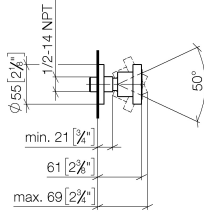
Recommended miscellaneous



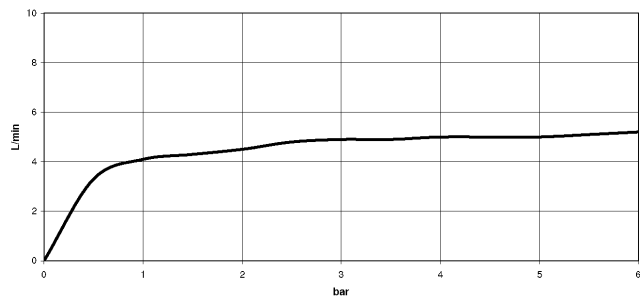
- Concealed wall elbow -** 35 085 970 90
- min. recess depth 90 mm
 - max. recess depth 163 mm

28 518 979 Product version from 4/1/2024

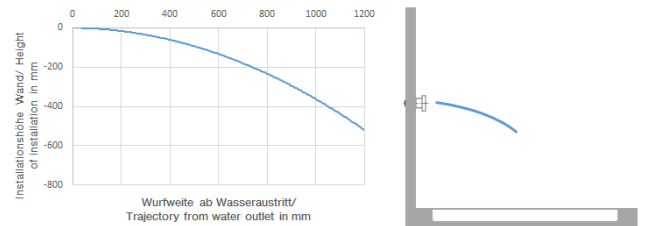
mm [inches]



Flow rate chart



Trajectory diagram



Codes & Standards

ASME A112.18.1	cUPC	DIN 4109	ISO 3822
Scottish Water Byelaws	UK Water Supply Regulations	Ü-Zeichen	



Body spray without volume control FlowReduce - Matte Black

SERIES SPECIFIC

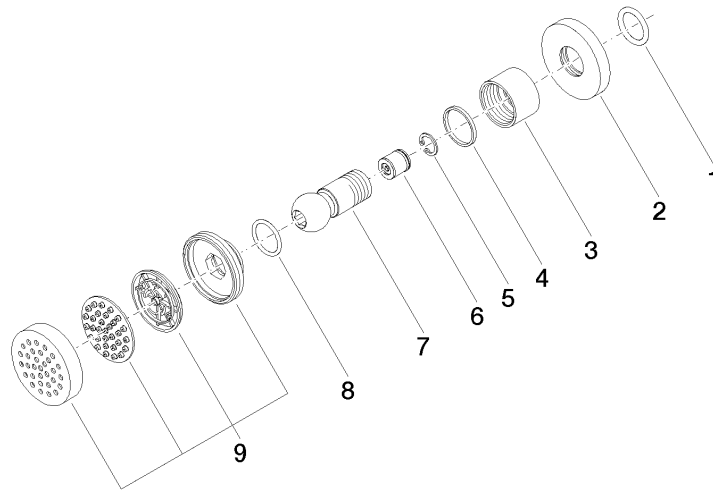
28 518 979 Product version from 4/1/2024

Certificates and sustainability

WRAS_240602

LGA_38

IAPMO_4976



Spare parts list

No.	Item Number	Name	Quantity used	Delivery time
1	90 14 10 026 00 90	O-Ring 20,5 x 3,5 mm -	1.00	14
5	09 16 01 014 90	Ring Retaining ring Ø 15 x 1 mm -	1.00	14
2	09 27 22 019-33	Rosette Ø 55 x Ø 27 x 9 mm - Matte Black	1.00	40
7	09 21 40 016-33	Ball joint for bidet aerator Ø 26 x 58,5 mm - Matte Black	1.00	40
9	90 12 05 027 00-33	Spray face for body sprays Ø 55 x 12 mm - Matte Black	1.00	40
4	09 14 15 010 90	Ring Ø 25,3 x Ø 28,3 x 2,5 mm -	1.00	14
3	09 23 30 026-33	Mounting for body spray Ø 34 x 22 mm - Matte Black	1.00	40
8	09 14 10 015 90	O-Ring EPDM 70 21,5 x 2,5 mm -	1.00	14
6	09 23 01 048 90	Back-flow preventer 5 l/min. -	1.00	14