

136-402 360mA 5700K specific configuration

Downlight | Ø145mm | black | 60° | 3-CCT | 360mA | no driver

## Introduction

### Purpose of this Document

This document provides information for 136-402 360mA 5700K. During measurement, the product is used in a different mode where output power, colour temperature and/or beam angle are changed from factory standard. These adjustments can be made without altering the product and are designed to be set by the installer. In most cases, the options are set through switches on the product.

### Results

Total input power	13.3 W
Correlated Colour Temperature	5798 K
Total lumen output	1160 lm
Efficiency	87 lm/W

## Electrical measurement details

### Input Power

RMS Input voltage feed. $V_{RMS}$	37.0 V
RMS Input current feed. $I_{RMS}$	0.360 A
Total input power	13.3 W

Frequency of input power	0 Hz
Power factor	1.0
Displacement power factor	0.97

Total harmonic distortion of the current	0%
Total harmonic distortion of the voltage	0%

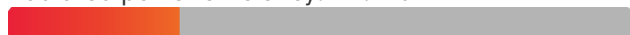
### Input Power Curve

Voltage - Current



### Efficiency

Radiated power efficiency: 27.9%



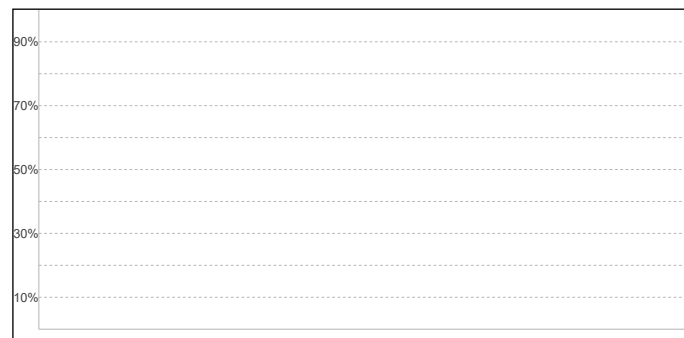
Lumen efficiency: 87 lm/W



### Harmonics

3rd Harmonic	n/a
5th Harmonic	n/a
7th Harmonic	n/a
9th Harmonic	n/a
11th Harmonic	n/a

### Current Harmonics %



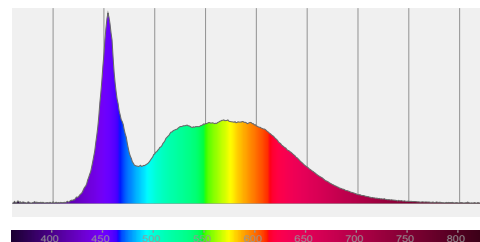
## 136-402 360mA 5700K specific configuration

### Colour measurement details

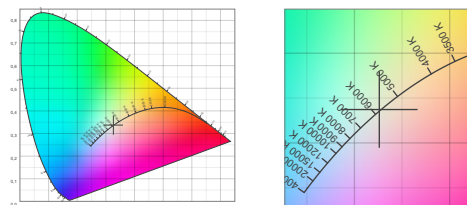
Total lumen output 1160 lm  
 Correlated Colour Temperature 5798 K  
 Colour coordinates CIE 1931 (x;y) = (0.326;0.337)  
 Colour deviation from BBL Duv = 0.0009

TM30-18 Colour Fidelity Index  $R_f$  82.9  
 TM30-18 Colour Gamut Index  $R_g$  94.5  
 Colour Rendering Index (Ra) CRI 84.6  
 Colour Rendering Index. (red component)  $R_9 = 17.0$

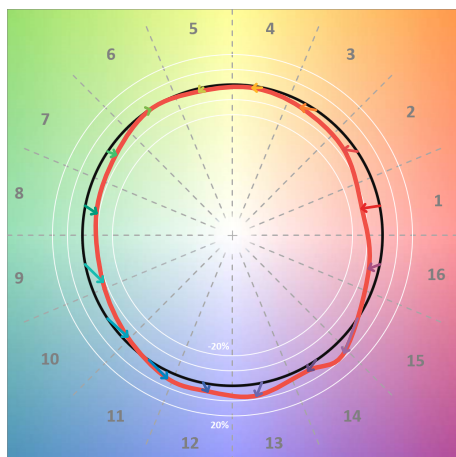
Colour Quality Scale CQS = 80.7  
 Television Lighting Consistency Index TLCI = 76



Relative spectral power distribution



### TM30 details

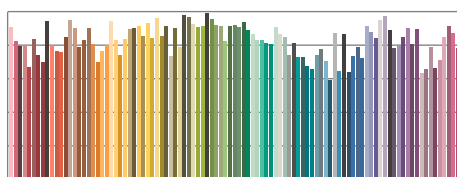


TM30 Colour vectors per hue bin

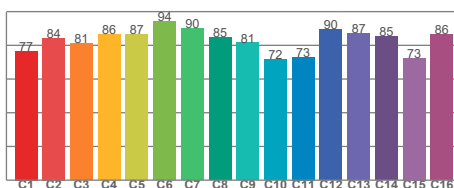


TM30 Colour distortion

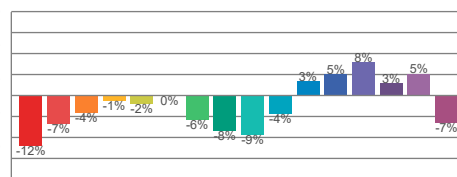
Hue Bin	$R_f$	Shifts (%)	
		Chroma	Hue
C1	77	-12%	1%
C2	84	-7%	6%
C3	81	-4%	9%
C4	86	-1%	6%
C5	87	-2%	3%
C6	94	0%	-1%
C7	90	-6%	-1%
C8	85	-8%	3%
C9	81	-9%	14%
C10	72	-4%	17%
C11	73	3%	16%
C12	90	5%	4%
C13	87	8%	-5%
C14	85	3%	-8%
C15	73	5%	-24%
C16	86	-7%	-4%



TM30-18  $R_f$ -values per reference colour

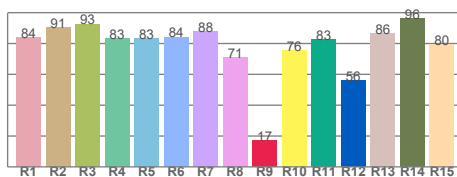


TM30-18  $R_f$ -values per hue bin

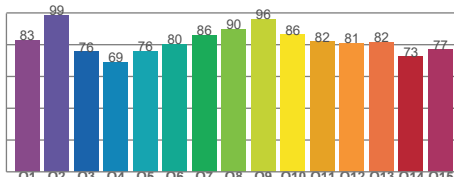


TM30 Chroma shift

### Colour Quality details



Colour Rendering Index



Colour Quality Scale