

Color: ■ blue

Through terminal block, 285 Series, blue

Our through terminal block (item number 285-1184) makes connections quick and easy. Strip lengths must be between 45 mm and 47 mm when connecting conductors to this through terminal block. This product features conductor terminals and utilizes POWER CAGE CLAMP. The POWER CAGE CLAMP is a reliable, maintenance-free, and universal way to connect large conductor cross-sections. It's also suitable for all conductor types. The clamping point can be locked open and you do not need to use a torque wrench or prepare the conductor in any way, e.g., by crimping the ferrule. Depending on the type of conductor, this through terminal block is designed for conductor cross sections ranging from 50 mm² to 185 mm². It features one level and two clamping points for connecting a single potential. The blue housing is made of polyamide (PA66) for insulation. These high-current terminal blocks are mounted using DIN-rails 35 x 15..

Electrical data				
Ratings per		IEC/EN 60947-7-1		
Overvoltage category		III	III	II
Pollution degree		3	2	2
Nominal voltage		1000 V	-	-
Rated surge voltage		12 kV	-	-
Rated current		353 A	-	-
Ratings per IEC/EN 2				
Rated voltage (III/3)		1500 V		
Rated impulse withstand voltage (III/3)		12 kV		
Approvals per		UL 1059		
Use group		B	C	D
Rated voltage		600 V	600 V	-
Rated current		310 A	310 A	-
Approvals per		CSA 22.2 No 158		
Use group		B	C	D
Rated voltage		1000 V	1000 V	-
Rated current		310 A	-	-
Power Loss				
Power loss, per pole (potential)		11.2148 W		
Rated current I _N for specified power loss		353 A		
Resistance value for specified, current-dependent power loss		9e-005 Ω		
General information				
Voltage type 1		AC/DC		
Voltage type 2		DC		



Connection data																								
Clamping units	2	<div>Connection 1</div> <table><tr><td>Connection technology</td><td>POWER CAGE CLAMP</td></tr><tr><td>Actuation type</td><td>T-wrench; 8 mm</td></tr><tr><td>Connectable conductor materials</td><td>Copper</td></tr><tr><td>Nominal cross-section</td><td>185 mm² / 350 kcmil</td></tr><tr><td>Solid conductor</td><td>50 ... 185 mm² / 1/0 AWG ... 350 kcmil</td></tr><tr><td>Stranded conductor</td><td>50 ... 185 mm² / 1/0 AWG ... 350 kcmil</td></tr><tr><td>Fine-stranded conductor</td><td>50 ... 185 mm² / 1/0 AWG ... 350 kcmil</td></tr><tr><td>Fine-stranded conductor; with insulated ferrule</td><td>50 ... 150 mm² / 1/0 AWG ... 300 kcmil</td></tr><tr><td>Fine-stranded conductor; with uninsulated ferrule</td><td>50 ... 185 mm² / 1/0 AWG ... 350 kcmil</td></tr><tr><td>Strip length</td><td>45 ... 47 mm / 1.77 ... 1.85 inches</td></tr><tr><td>Wiring direction</td><td>Side-entry wiring</td></tr></table>	Connection technology	POWER CAGE CLAMP	Actuation type	T-wrench; 8 mm	Connectable conductor materials	Copper	Nominal cross-section	185 mm² / 350 kcmil	Solid conductor	50 ... 185 mm² / 1/0 AWG ... 350 kcmil	Stranded conductor	50 ... 185 mm² / 1/0 AWG ... 350 kcmil	Fine-stranded conductor	50 ... 185 mm² / 1/0 AWG ... 350 kcmil	Fine-stranded conductor; with insulated ferrule	50 ... 150 mm² / 1/0 AWG ... 300 kcmil	Fine-stranded conductor; with uninsulated ferrule	50 ... 185 mm² / 1/0 AWG ... 350 kcmil	Strip length	45 ... 47 mm / 1.77 ... 1.85 inches	Wiring direction	Side-entry wiring
Connection technology	POWER CAGE CLAMP																							
Actuation type	T-wrench; 8 mm																							
Connectable conductor materials	Copper																							
Nominal cross-section	185 mm² / 350 kcmil																							
Solid conductor	50 ... 185 mm² / 1/0 AWG ... 350 kcmil																							
Stranded conductor	50 ... 185 mm² / 1/0 AWG ... 350 kcmil																							
Fine-stranded conductor	50 ... 185 mm² / 1/0 AWG ... 350 kcmil																							
Fine-stranded conductor; with insulated ferrule	50 ... 150 mm² / 1/0 AWG ... 300 kcmil																							
Fine-stranded conductor; with uninsulated ferrule	50 ... 185 mm² / 1/0 AWG ... 350 kcmil																							
Strip length	45 ... 47 mm / 1.77 ... 1.85 inches																							
Wiring direction	Side-entry wiring																							
Total number of potentials	1																							
Number of levels	1																							
Number of jumper slots	2																							

Physical data		
Width		32 mm / 1.26 inches
Height		130 mm / 5.118 inches
Depth from upper-edge of DIN-rail		116 mm / 4.567 inches

Mechanical data		
Mounting type		DIN-rail 35 x 15
Mounting (note)		only suitable for DIN 35 x 15 rail
Marking level		Side marking

Material data		
Note (material data)		Information on material specifications can be found here
Color		blue
Material group		I
Insulation material (main housing)		Polyamide (PA66)
Flammability class per UL94		V0
Fire load		5.812 MJ
Weight		530.1 g

Environmental requirements		
Processing temperature		-35 ... +85 °C
Continuous operating temperature		-60 ... +105 °C

Commercial data		
Product Group		1 (Rail Mounted Terminal Blocks)
eCl@ss 10.0		27-14-11-20
eCl@ss 9.0		27-14-11-20
ETIM 9.0		EC000897
ETIM 8.0		EC000897
PU (SPU)		5 pcs
Packaging type		Box
Country of origin		PL
GTIN		4055143067058
Customs tariff number		85369010000



Environmental Product Compliance	
RoHS Compliance Status	Compliant,No Exemption

Approvals / Certificates

General approvals		Declarations of conformity and manufacturer's declarations
Approval	Standard	Certificate Name
CCA DEKRA Certification B.V.	EN 60947	NTR NL 7965
CSA DEKRA Certification B.V.	C22.2 No. 158	154112
KEMA/KEUR DEKRA Certification B.V.	EN 60947	71-126013
UL Underwriters Laboratories Inc.	UL 1059	E45172
		EU-Declaration of Confor- mity WAGO GmbH & Co. KG
		UK-Declaration of Confor- mity WAGO GmbH & Co. KG

Approvals for marine applications

Approval	Standard	Certificate Name
ABS American Bureau of Ship- ping	EN 60947	20-HG1941090-PDA
DNV GL Det Norske Veritas, Ger- manischer Lloyd	-	TAE00001V2

Downloads

Environmental Product Compliance	
Compliance Search	
Environmental Product Compliance 285-1184	

Documentation

Additional Information		Bid Text	
Technical Section	pdf 2246.92 KB	285-1184	
		19.02.2019	xml 3.88 KB
		285-1184	
		04.01.2018	doc 25.50 KB



CAD/CAE-Data	
CAD data	CAE data
2D/3D Models 285-1184	EPLAN Data Portal 285-1184
	WSCAD Universe 285-1184
	ZUKEN Portal 285-1184

1 Compatible Products
1.1 Optional Accessories
1.1.1 Cover
1.1.1.1 Cover



Item No.: 285-1178
Finger guard; touchproof cover protects unused conductor entries and jumper slots; for 185 mm² high-current terminal blocks; yellow

1.1.2 Current and voltage tap
1.1.2.1 Current and voltage tap



Item No.: 855-1851/350-000
Current and voltage tap up to 185 mm²; Primary rated current: 350 A; Secondary rated current: 1 A; Rated power: 0.2 VA; Accuracy class: 0.5; fused

1.1.3 DIN-rail
1.1.3.1 Mounting accessories



Item No.: 210-198
Copper carrier rail; 35 x 15 mm; 2.3 mm thick; 2 m long; unslotted; according to EN 60715; copper-colored



Item No.: 210-118
Steel carrier rail; 35 x 15 mm; 2.3 mm thick; 2 m long; unslotted; according to EN 60715; silver-colored



1.1.4 Installation

1.1.4.1 Mounting accessories



Item No.: 285-1179

Fixing element; for 185 mm² high-current terminal blocks; orange



Item No.: 249-197

Screwless end stop; 14 mm wide; for DIN-rail 35 x 15 and 35 x 7.5; gray

1.1.5 Jumper

1.1.5.1 Jumper



Item No.: 285-1171

Jumper; insulated; gray

1.1.6 Marking

1.1.6.1 Marker



Item No.: 793-5501/000-006

WMB marking card; as card; for terminal block width 5 - 17.5 mm; stretchable 5 - 5.2 mm; plain; snap-on type; blue



Item No.: 793-5501/000-014

WMB marking card; as card; for terminal block width 5 - 17.5 mm; stretchable 5 - 5.2 mm; plain; snap-on type; brown



Item No.: 793-5501/000-007

WMB marking card; as card; for terminal block width 5 - 17.5 mm; stretchable 5 - 5.2 mm; plain; snap-on type; gray



Item No.: 793-5501/000-023

WMB marking card; as card; for terminal block width 5 - 17.5 mm; stretchable 5 - 5.2 mm; plain; snap-on type; green



Item No.: 793-5501/000-017

WMB marking card; as card; for terminal block width 5 - 17.5 mm; stretchable 5 - 5.2 mm; plain; snap-on type; light green



Item No.: 793-5501/000-012

WMB marking card; as card; for terminal block width 5 - 17.5 mm; stretchable 5 - 5.2 mm; plain; snap-on type; orange



Item No.: 793-5501/000-005

WMB marking card; as card; for terminal block width 5 - 17.5 mm; stretchable 5 - 5.2 mm; plain; snap-on type; red



Item No.: 793-5501/000-024

WMB marking card; as card; for terminal block width 5 - 17.5 mm; stretchable 5 - 5.2 mm; plain; snap-on type; violet



Item No.: 793-5501

WMB marking card; as card; for terminal block width 5 - 17.5 mm; stretchable 5 - 5.2 mm; plain; snap-on type; white



Item No.: 793-5501/000-002

WMB marking card; as card; for terminal block width 5 - 17.5 mm; stretchable 5 - 5.2 mm; plain; snap-on type; yellow



Item No.: 793-501/000-006

WMB marking card; as card; not stretchable; plain; snap-on type; blue



Item No.: 793-501/000-007

WMB marking card; as card; not stretchable; plain; snap-on type; gray



Item No.: 793-501/000-023

WMB marking card; as card; not stretchable; plain; snap-on type; green



Item No.: 793-501/000-017

WMB marking card; as card; not stretchable; plain; snap-on type; light green



Item No.: 793-501/000-012

WMB marking card; as card; not stretchable; plain; snap-on type; orange



Item No.: 793-501/000-005

WMB marking card; as card; not stretchable; plain; snap-on type; red



Item No.: 793-501/000-024

WMB marking card; as card; not stretchable; plain; snap-on type; violet



Item No.: 793-501

WMB marking card; as card; not stretchable; plain; snap-on type; white



Item No.: 793-501/000-002

WMB marking card; as card; not stretchable; plain; snap-on type; yellow



Item No.: 2009-115/000-006

WMB-Inline; for Smart Printer; 1500 pieces on roll; stretchable 5 - 5.2 mm; plain; snap-on type; blue



Item No.: 2009-115/000-007

WMB-Inline; for Smart Printer; 1500 pieces on roll; stretchable 5 - 5.2 mm; plain; snap-on type; gray



Item No.: 2009-115/000-023

WMB-Inline; for Smart Printer; 1500 pieces on roll; stretchable 5 - 5.2 mm; plain; snap-on type; green



Item No.: 2009-115/000-017

WMB-Inline; for Smart Printer; 1500 pieces on roll; stretchable 5 - 5.2 mm; plain; snap-on type; light green



Item No.: 2009-115/000-012

WMB-Inline; for Smart Printer; 1500 pieces on roll; stretchable 5 - 5.2 mm; plain; snap-on type; orange



Item No.: 2009-115/000-005

WMB-Inline; for Smart Printer; 1500 pieces on roll; stretchable 5 - 5.2 mm; plain; snap-on type; red



Item No.: 2009-115/000-024

WMB-Inline; for Smart Printer; 1500 pieces on roll; stretchable 5 - 5.2 mm; plain; snap-on type; violet



Item No.: 2009-115

WMB-Inline; for Smart Printer; 1500 pieces on roll; stretchable 5 - 5.2 mm; plain; snap-on type; white



Item No.: 2009-115/000-002

WMB-Inline; for Smart Printer; 1500 pieces on roll; stretchable 5 - 5.2 mm; plain; snap-on type; yellow

1.1.6.2 Marking strip



Item No.: 2009-110
Marking strips; for Smart Printer; on reel; not stretchable; plain; snap-on type; white

1.1.7 Power tap

1.1.7.1 Power tap



Item No.: 285-1175
Power tap; for 185 mm² high-current terminal blocks; gray

1.1.8 Protective warning marker

1.1.8.1 Cover



Item No.: 285-1177
Protective warning marker; with high-voltage symbol, black; yellow



Item No.: 285-1176
Protective warning marker; yellow

1.1.9 Tool

1.1.9.1 Operating tool



Item No.: 285-172
Allen wrench; with a partially insulated shaft; green



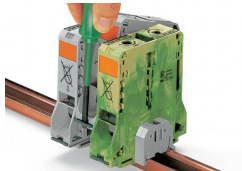
Item No.: 285-173
Allen wrench; with a partially insulated shaft; with anti-rotation protection; green

Installation Notes

Installation



Snapping a terminal block onto DIN-rail (to the left or to the right).



Removing a terminal block from the assembly (to the left or to the right).



Conductor termination

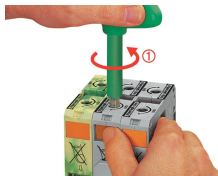


For the optimal clamping force:

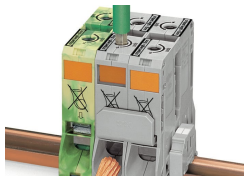
- Bend conductor
- Cut conductor to length (conductor end must be straight)
- Strip conductor



Always observe the on-unit printed strip length guide!



Conductor termination – step 1:
Rotate the T-wrench counter-clockwise to the stop. Next, push in the orange locking tab. The clamp is locked open for hands-free wiring.

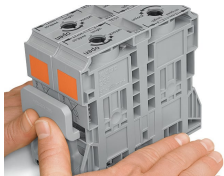


Conductor termination – step 2:
Insert a stripped conductor into the clamping unit until it hits the backstop. Hold in this position.

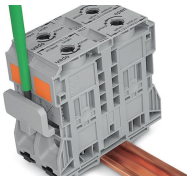


Conductor termination – step 3:
A short counter-clockwise rotation releases the tab. When unlocked, the T-wrench rotates clockwise, securely clamping the conductor.

Commoning

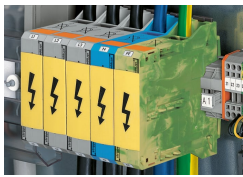


Commoning with an adjacent jumper: insert the jumper above the conductor entry hole – prior to conductor termination. The nominal cross-section remains unchanged.

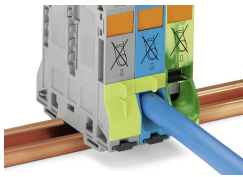


Removing jumper via operating tool.

Cover

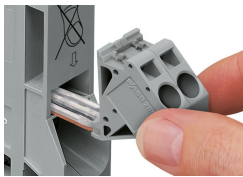


Protective warning marker may indicate: Notice: Power is still on even after switching off the main switch!

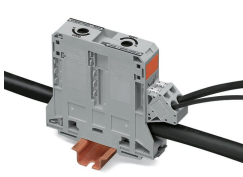


Yellow, detachable finger guards provide touch-proof safety by shielding jumper contact slots and/or unused conductor entries.

Power tap



Easily and consistently tap directly into the power supply. Insert the unwired tap before opening the clamping unit.



Security

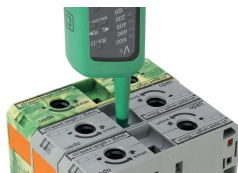


Risk of Injury!
Do not insert fingers in the conductor entry!

Testing

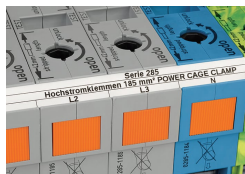


Testing via touch-proof 4 mm Ø test plugs (not available from WAGO, but offered by industry suppliers such as, Multi-Contact Deutschland GmbH).



Testing
Voltage measurements can be performed, e.g., using a 2-pole voltage tester (Item No. 206-707).

Marking



In addition to WMB markers, marking strips can be directly applied to 185 mm² (350 kcmil) high-current terminal blocks.