

136-130 21W 4000K specific configuration

Downlight 3-CCT | cut out Ø240-255mm | 21W/30W

Introduction

Purpose of this Document

This document provides information for 136-130 21W 4000K. During measurement, the product is used in a different mode where output power, colour temperature and/or beam angle are changed from factory standard. These adjustments can be made without altering the product and are designed to be set by the installer. In most cases, the options are set through switches on the product.

Results

Total input power	20.2 W
Correlated Colour Temperature	4525 K
Total lumen output	2357 lm
Efficiency	117 lm/W

Electrical measurement details

Input Power

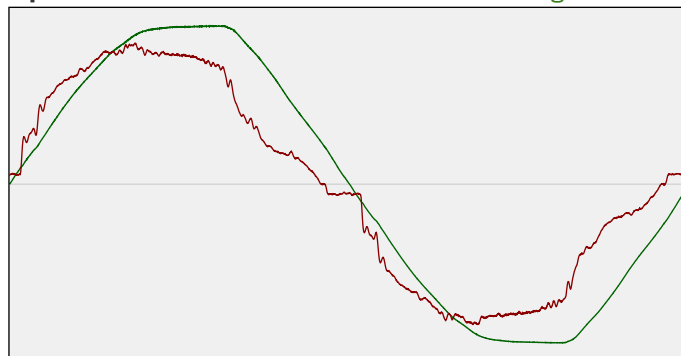
RMS Input voltage feed. V_{RMS}	229 V
RMS Input current feed. I_{RMS}	0.093 A
Total input power	20.2 W

Frequency of input power	50 Hz
Power factor	0.95
Displacement power factor	0.96

Total harmonic distortion of the current	12.35%
Total harmonic distortion of the voltage	3%

Input Power Curve

Voltage - Current



Efficiency

Radiated power efficiency: 37.7%



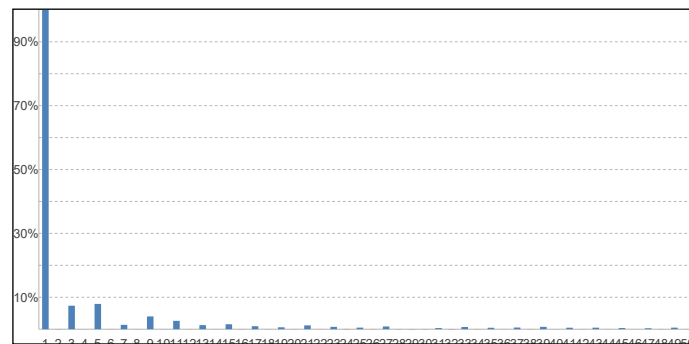
Lumen efficiency: 117 lm/W



Harmonics

3rd Harmonic	7.36%
5th Harmonic	7.92%
7th Harmonic	1.36%
9th Harmonic	4%
11th Harmonic	2.62%

Current Harmonics %



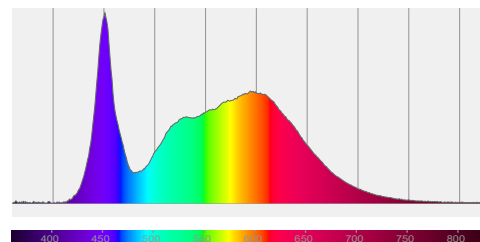
136-130 21W 4000K specific configuration

Colour measurement details

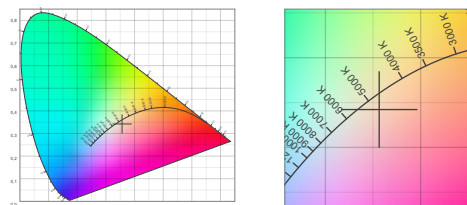
Total lumen output 2357 lm
 Correlated Colour Temperature 4525 K
 Colour coordinates CIE 1931 (x;y) = (0.356;0.342)
 Colour deviation from BBL Duv = -0.0093

TM30-18 Colour Fidelity Index R_f 82.6
 TM30-18 Colour Gamut Index R_g 100.4
 Colour Rendering Index (Ra) CRI 86.3
 Colour Rendering Index. (red component) $R_9 = 31.8$

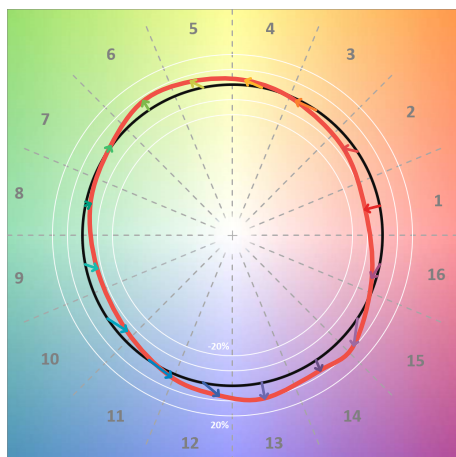
Colour Quality Scale CQS = 81.1
 Television Lighting Consistency Index TLCI = 71



Relative spectral power distribution



TM30 details

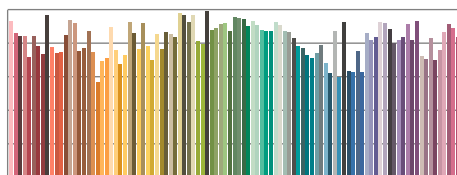


TM30 Colour vectors per hue bin

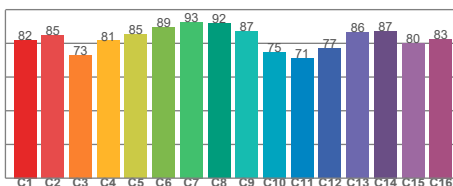


TM30 Colour distortion

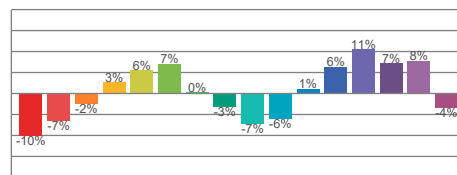
Hue Bin	R_f	Shifts (%)	
		Chroma	Hue
C1	82	-10%	-1%
C2	85	-7%	7%
C3	73	-2%	14%
C4	81	3%	11%
C5	85	6%	7%
C6	89	7%	0%
C7	93	0%	-4%
C8	92	-3%	-2%
C9	87	-7%	4%
C10	75	-6%	14%
C11	71	1%	18%
C12	77	6%	12%
C13	86	11%	0%
C14	87	7%	-1%
C15	80	8%	-16%
C16	83	-4%	-10%



TM30-18 R_f -values per reference colour

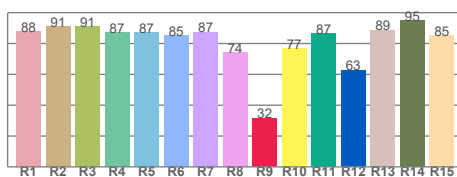


TM30-18 R_f -values per hue bin

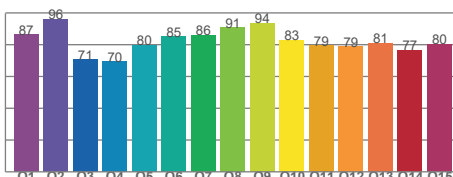


TM30 Chroma shift

Colour Quality details



Colour Rendering Index



Colour Quality Scale