



## PHOTOMETRIC LIGHT REPORT

# Downlight 3-CCT | cut out Ø240-255mm | 21W/30W

Article number: 136-130



Go to the  
webshop  
of Tronix  
Lighting



**TRONIX**



## 136-130 Downlight 3-CCT | cut out Ø240-255mm | 21W/30W

### Introduction

#### Purpose of this Document

This document provides accurate and objective photometric data for Tronix Lighting item 136-130. All information is based on actual measurements taken from standard production units. No modifications were made to enhance performance results. In some cases, minor adjustments—such as temporary removal of covers, cables, or mounting features—were necessary for testing purposes. These did not influence product performance.

#### Test Methodology

Testing was conducted using randomly selected, unopened samples from regular inventory. All tests comply with the LM-79-19 standard, the recognized method for photometric and electrical measurements of LED and OLED luminaires. This standard, an update of IES LM-79-2008, outlines environmental test conditions, stabilization procedures, measurement methods, and approved instruments. It uses absolute photometry, meaning results directly reflect the performance of the tested product, without comparison to rated lamp standards.

#### Product 136-130 was tested using:

- A photogoniometer to measure luminous intensity distribution at various angles
- An integrating sphere to determine total luminous flux and colour characteristics

#### Compliance & Certification

Item 136-130 meets the requirements of the following EU directives. Tronix Lighting certifies that all relevant tests were executed in accordance with the applicable standards, and the CE mark is applied accordingly:

- General Product Safety – Directive 2023/988/EC
- Low Voltage Directive (LVD) – Directive 2014/35/EU
- Electromagnetic Compatibility (EMC) – Directive 2004/108/EC
- Ecodesign – Directive 2009/125/EC
- RoHS 3 – Directive 2011/65/EU + Amendment 2015/863/EU

#### Recycling & Sustainability

Tronix Lighting is affiliated with national recycling systems for electrical and electronic waste. The luminaire is over 90% recyclable when disposed of as electronic waste at end of life. In addition, Tronix Lighting participates in national packaging recycling schemes, ensuring full compliance with both the WEEE and packaging directives.



136-130 Downlight 3-CCT | cut out Ø240-255mm | 21W/30W

Laboratory and equipment

Laboratory owner and location	Tronix Lighting BV. Uden. The Netherlands
Gonio spectrometer system and type	Viso Systems Type C. horizontal
Spectrometer manufacturer and model	(Gonio) Ocean Optics STS VIS (Sphere) Admesy HERA VIS 380–780nm
Flicker meter manufacturer and model	Viso Systems LabFlicker
Oscilloscope manufacturer and model	Tektronix MDO3024 oscilloscope (4 Channels. 200 MHz)
Power meter manufacturer and model	Vitretek PA900 Precision Multi-Channel Harmonic Power Analyzer
Power source manufacturer and model	(DC) Keithley Source Measure Unit SMU-2420 3A DC Source Meter (AC) Chroma 61601 AC Source
Datalogger Manufacturer and Model	Omega 8-Channel Thermocouple Thermometer/Data Logger

Measurement conditions gonio spectrometer

Number of C-planes and Resolution	2 planes – 180°
γ (gamma)-Resolution	1°
Test Distance	1.81 m
Room Temperature and Humidity	22°C +/- 10% – RH 50% +/- 20%
Input Power. Power and Displacement Factors	28.7 W – PF 0.98 – DPF 0.98
Frequency of Input Power	50 Hz
Warm-up Time and Variation	Lamp stabilized in 15 min 41 sec --2.5%

Tested light source

Manufacturer and Order Code	Tronix Lighting – 136-130
Product Description	Downlight 3-CCT   cut out Ø240-255mm   21W/30W

Main Light Measurement Results

Output – Total Lumen (Up% / Down%)	3168 lm – 0% / 100%
Efficiency	110 lm/W
Energy efficiency class	F
Peak Intensity and Beam Angle	1179 cd – 109°
Correlated Colour Temperature	CCT = 4492 K
Colour Shift. CIE duv	Duv -0.0096
Colour Rendering Index	CRI 86.1
Colour Rendering TM30-18	R <sub>f</sub> 82.3 – R <sub>g</sub> 100.7
Television Lighting Consistency Index	TLCI = 70
Flicker	SVM 0 – PstLM 0.03



136-130 Downlight 3-CCT | cut out Ø240-255mm | 21W/30W

Electrical measurement details

**Input Power**

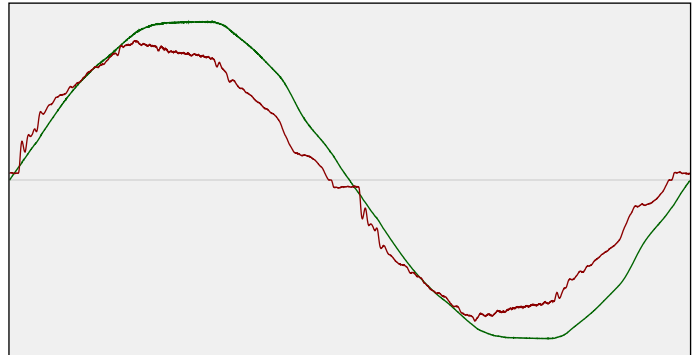
RMS Input voltage feed.  $V_{RMS}$  231 V  
 RMS Input current feed.  $I_{RMS}$  0.127 A  
 Total input power 28.7 W

Frequency of input power 50 Hz  
 Power factor 0.98  
 Displacement power factor 0.98

Total harmonic distortion of the current 6.79%  
 Total harmonic distortion of the voltage 2.61%

**Input Power Curve**

Voltage - Current



**Efficiency**

Radiated power efficiency: 35.6%



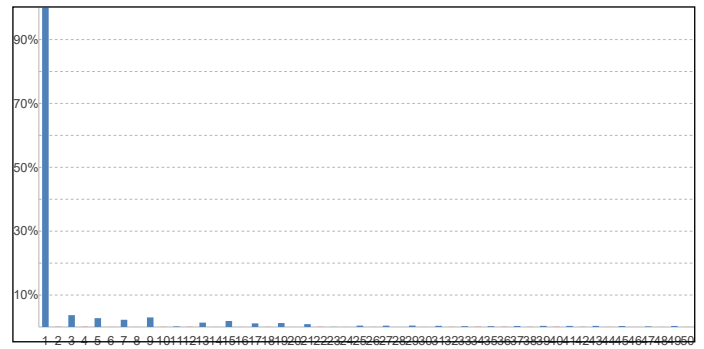
Lumen efficiency: 110 lm/W



**Harmonics**

3rd Harmonic 3.71%  
 5th Harmonic 2.77%  
 7th Harmonic 2.26%  
 9th Harmonic 3%  
 11th Harmonic 0.18%

**Current Harmonics %**



Stabilization Details

**Warm-up Conditions**

Stable period 15 min  
 Stable change max 2.0%  
 Minimum warm-up time 15 min

**Colour temperature change during warm-up**

CCT start 4464 K  
 CCT shift +28 K  
 CCT end 4492 K

**Warm-up Results**

Total warmup time Lamp stabilized in 15 min 41 sec  
 Warmup variation -2.5%

**Output intensity change during warm-up**

Output start 3244 lm  
 Output change -76 lm  
 Output end 3168 lm



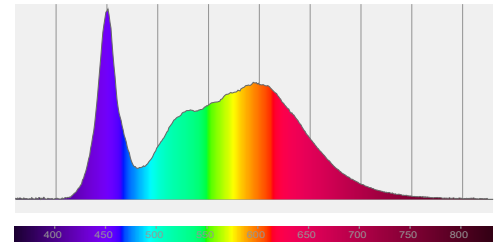
136-130 Downlight 3-CCT | cut out Ø240-255mm | 21W/30W

## Colour measurement details

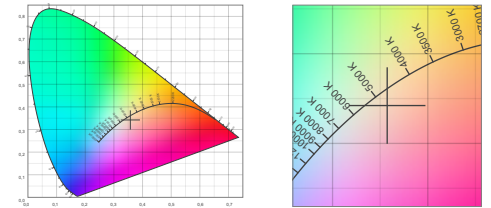
Total lumen output 3168 lm  
 Correlated Colour Temperature 4492 K  
 Colour coordinates CIE 1931 (x;y) = (0.357;0.342)  
 Colour deviation from BBL Duv = -0.0096

TM30-18 Colour Fidelity Index  $R_f$  82.3  
 TM30-18 Colour Gamut Index  $R_g$  100.7  
 Colour Rendering Index (Ra) CRI 86.1  
 Colour Rendering Index. (red component)  $R_9 = 31.2$

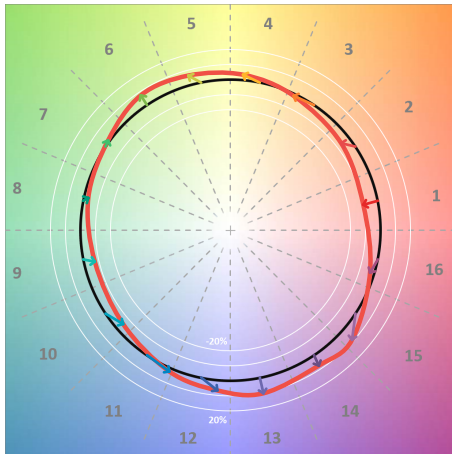
Colour Quality Scale CQS = 80.9  
 Television Lighting Consistency Index TLCI = 70



Relative spectral power distribution



## TM30 details

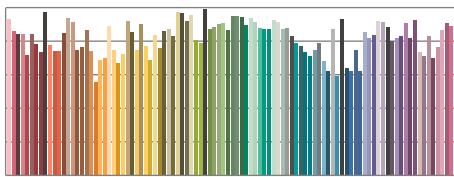


TM30 Colour vectors per hue bin

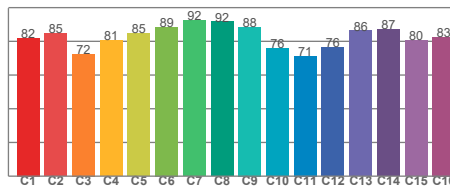


TM30 Colour distortion

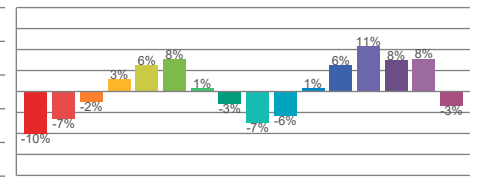
Hue Bin	$R_f$	Shifts (%)	
		Chroma	Hue
C1	82	-10%	-1%
C2	85	-7%	7%
C3	72	-2%	15%
C4	81	3%	12%
C5	85	6%	8%
C6	89	8%	0%
C7	92	1%	-4%
C8	92	-3%	-3%
C9	88	-7%	3%
C10	76	-6%	12%
C11	71	1%	18%
C12	76	6%	12%
C13	86	11%	0%
C14	87	8%	-1%
C15	80	8%	-16%
C16	83	-3%	-10%



TM30-18  $R_f$ -values per reference colour

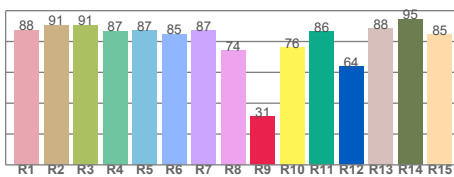


TM30-18  $R_f$ -values per hue bin

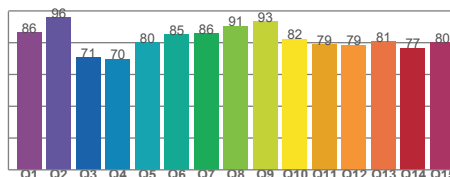


TM30 Chroma shift

## Colour Quality details



Colour Rendering Index



Colour Quality Scale



136-130 Downlight 3-CCT | cut out Ø240-255mm | 21W/30W

Flicker / temporal light artefacts details

**Measurement conditions**

Flicker meter type	Viso Systems LabFlicker
Flicker/TLA sample rate	20000 samples/s
Measurement time	5x 180 seconds (15 minutes) for PstLM. 1.2 sec for all other indices

**Flicker indices according to Illuminating Engineering Society (IES)**

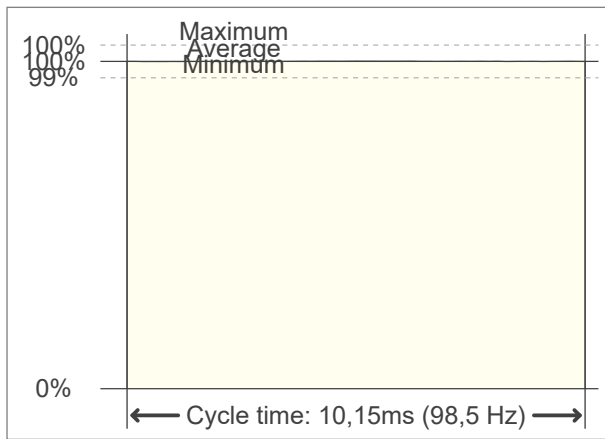
Flicker frequency	98.52 Hz
Percent flicker	0.22 %
Flicker index	0

**TLA indices (according IEC TR 61547-1, EN 61000-3-3 and EN 61000-4-15)**

An LED luminaire is considered flicker-free if the SVM value is  $\leq 0.4$  and if the PstLM value is  $\leq 1.0$

PstLM value (F < 80 Hz)	0.03
SVM value (80 < F < 2000 Hz)	0

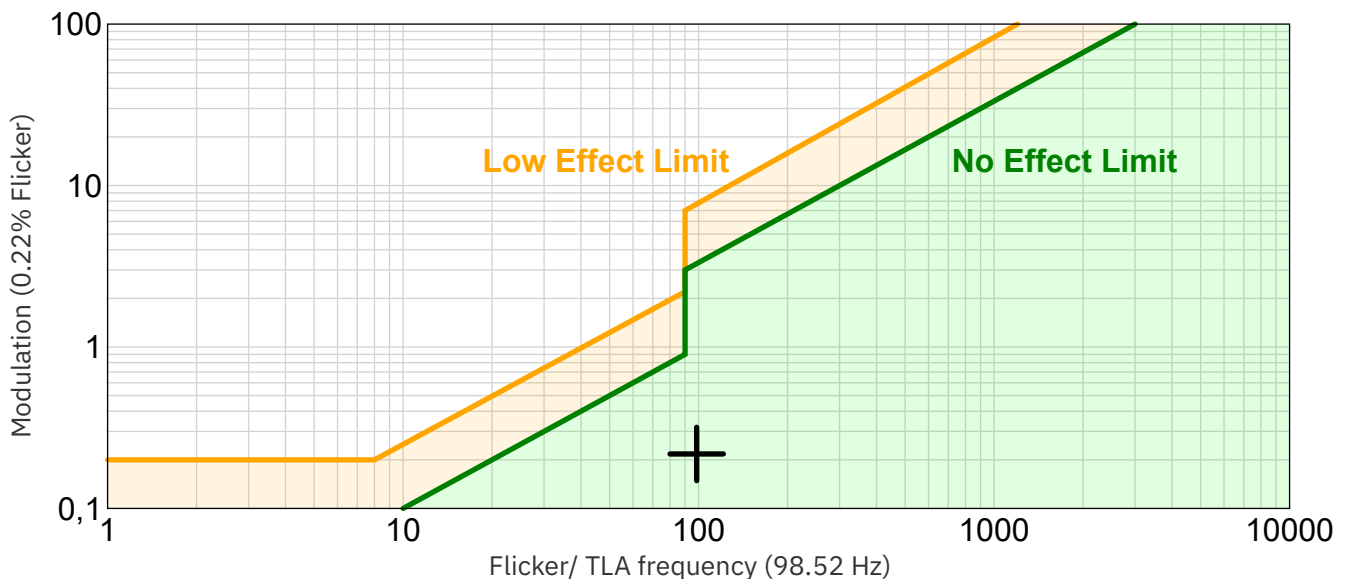
**Flicker frame (one flicker period in time domain)**



**Flicker FFT (flicker curve in frequency domain)**



**IEEE 1789-2015 Lighting Flicker Risk Zones**



Document revision date: 1-7-2025 Measurement serial: VFR-250127-1411-MS

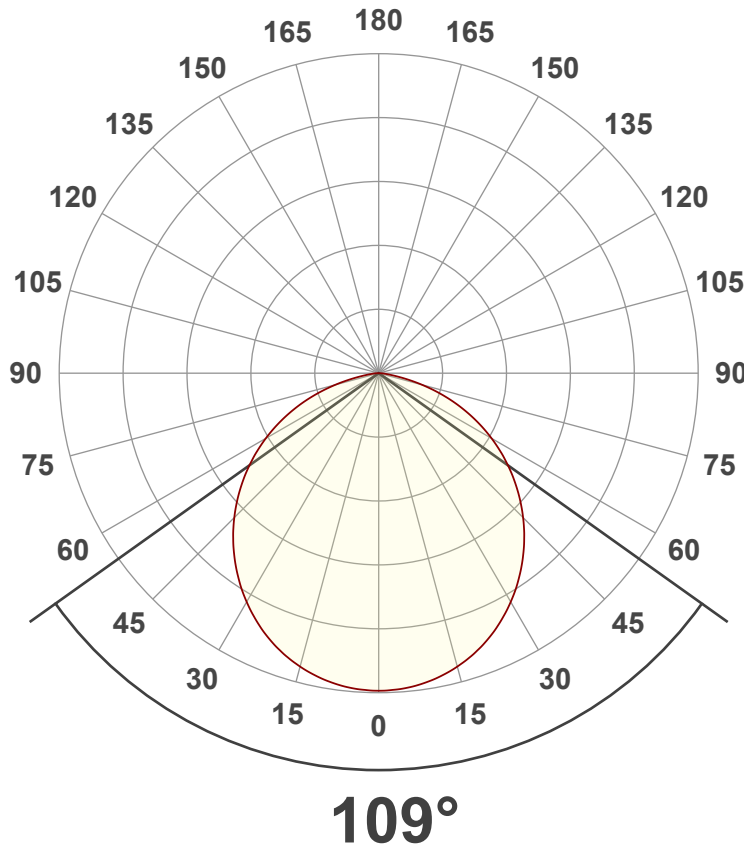


136-130 Downlight 3-CCT | cut out Ø240-255mm | 21W/30W

Beam angle

**Luminous Intensity diagram**

Unit: 0-100% of peak intensity



**Main Values**

Output (total Lumen)	3168 lm
Lumen Up/Down	0% / 100%
Peak Intensity	1179 cd
Beam Angle (50%)	109°
Beam Angle (90%)	109°
Beam Angle (10%)	109°

**Cut-off Angle**

Average 2.5%	167.6°
--------------	--------

**Field Angle**

Average 10%	154.7°
-------------	--------

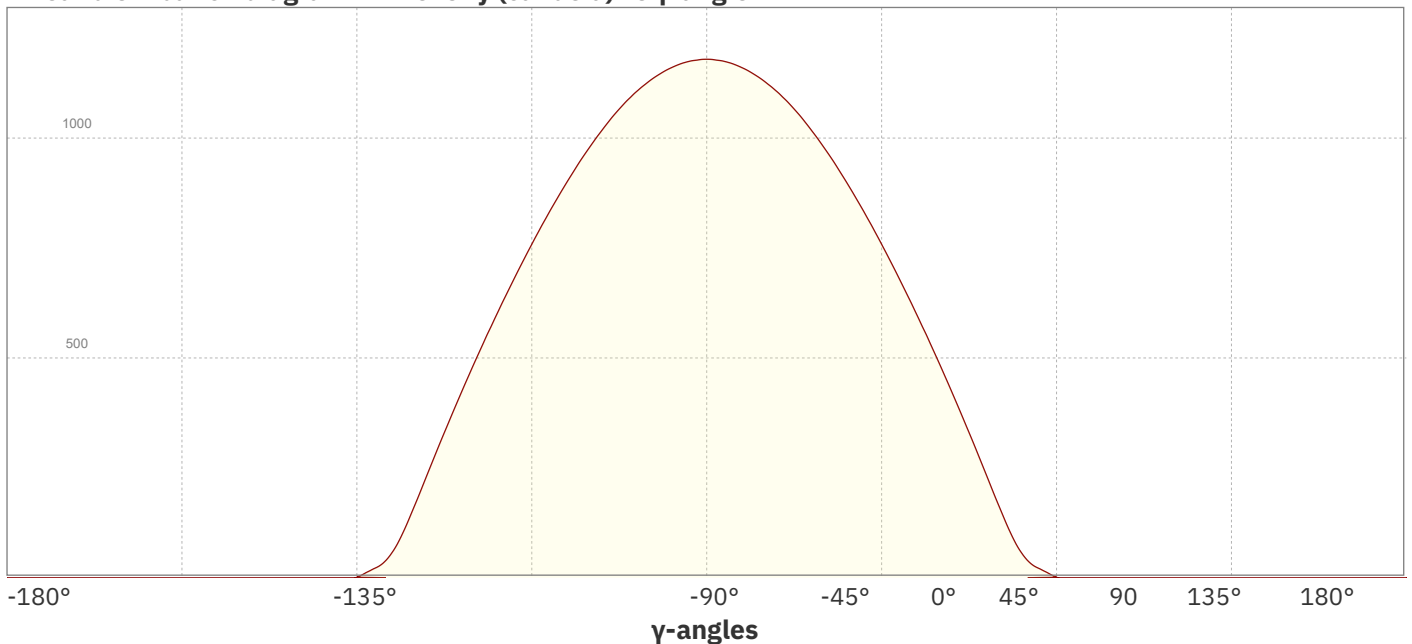
**Intensity Ratio**

In 120° cone	81.5%
In 90° cone	56.1%

**C planes**

- C000-C180
- C090-C270

**Linear distribution diagram - Intensity (candela) vs γ-angle**

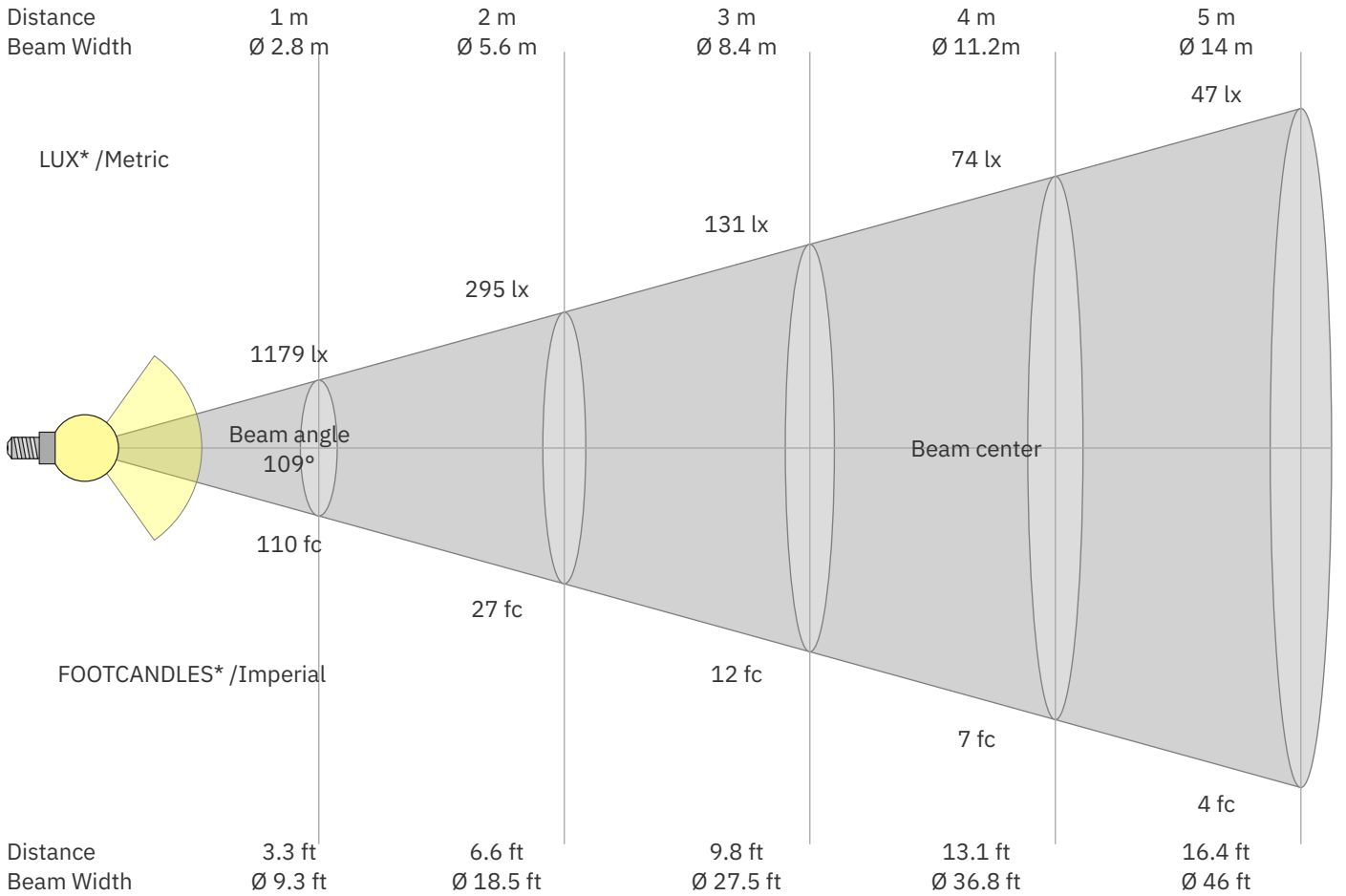


Document revision date: 1-7-2025 Measurement serial: VFR-250127-1411-MS



136-130 Downlight 3-CCT | cut out Ø240-255mm | 21W/30W

Beam Details



\*Measured at center of beam

Beam intensities from 1 – 20 m

1	2	3	4	5	6	7	8	9	10	11	12	13	14	15	16	17	18	19	20	m
3.3	6.6	9.8	13.1	16.4	19.7	23	26.2	29.5	32.8	36.1	39.4	42.7	45.9	49.2	52.5	55.8	59.1	62.3	65.6	ft
1179	295	131	74	47	33	24	18	15	12	10	8	7	6	5	5	4	4	3	3	lux
109.5	27.4	12.2	6.8	4.4	3	2.2	1.7	1.4	1.1	0.9	0.8	0.6	0.6	0.5	0.4	0.4	0.3	0.3	0.3	fc

Intensities in 0° c-plane

0°	5°	10°	15°	20°	25°	30°	35°	40°	45°	50°	55°	60°	65°	70°	75°	80°	85°	90°	95°	γ
1179	1173	1156	1128	1089	1040	981	913	839	758	672	580	484	382	276	167	70	23	1	0	cd
100%	100%	98%	96%	92%	88%	83%	77%	71%	64%	57%	49%	41%	32%	23%	14%	6%	2%	0%	0%	of 0°val

Intensities in 90° c-plane

0°	5°	10°	15°	20°	25°	30°	35°	40°	45°	50°	55°	60°	65°	70°	75°	80°	85°	90°	95°	γ
1179	1173	1156	1128	1089	1040	981	913	839	758	672	580	484	382	276	167	70	23	1	0	cd
100%	100%	98%	96%	92%	88%	83%	77%	71%	64%	57%	49%	41%	32%	23%	14%	6%	2%	0%	0%	of 0°val

Intensities in 180° c-plane

0°	5°	10°	15°	20°	25°	30°	35°	40°	45°	50°	55°	60°	65°	70°	75°	80°	85°	90°	95°	γ
1179	1173	1156	1128	1089	1040	981	913	839	758	672	580	484	382	276	167	70	23	1	0	cd
100%	100%	98%	96%	92%	88%	83%	77%	71%	64%	57%	49%	41%	32%	23%	14%	6%	2%	0%	0%	of 0°val

Intensities in 270° c-plane

0°	5°	10°	15°	20°	25°	30°	35°	40°	45°	50°	55°	60°	65°	70°	75°	80°	85°	90°	95°	γ
1179	1173	1156	1128	1089	1040	981	913	839	758	672	580	484	382	276	167	70	23	1	0	cd
100%	100%	98%	96%	92%	88%	83%	77%	71%	64%	57%	49%	41%	32%	23%	14%	6%	2%	0%	0%	of 0°val

Document revision date: 1-7-2025 Measurement serial: VFR-250127-1411-MS



136-130 Downlight 3-CCT | cut out Ø240-255mm | 21W/30W

Light Planning – UGR table

Uncorrected, comprehensive UGR table according to CIE 117-1995

Reflectances		70	70	50	50	30	70	70	50	50	30
ρ Ceiling		70	70	50	50	30	70	70	50	50	30
ρ Walls		50	30	50	30	30	50	30	50	30	30
ρ Floor		20	20	20	20	20	20	20	20	20	20
Room size		Viewed Crosswise					Viewed Endwise				
H = mounting height above eye level		(Viewing direction orthogonal to lamp length axis)					(Viewing direction parallel to lamp length axis)				
X	Y										
2H	2H	23.8	24.9	24.0	25.2	25.5	23.8	24.9	24.0	25.2	25.5
	3H	25.0	26.3	25.4	26.5	26.7	25.0	26.3	25.4	26.5	26.7
	4H	25.5	26.6	25.9	26.9	27.2	25.5	26.6	25.9	26.9	27.2
	6H	25.7	26.7	26.0	27.0	27.4	25.7	26.7	26.0	27.0	27.4
	8H	25.7	26.7	26.1	27.0	27.4	25.7	26.7	26.1	27.0	27.4
	12H	25.7	26.7	26.1	27.0	27.4	25.7	26.7	26.1	27.0	27.4
4H	2H	24.3	25.5	24.7	25.8	26.0	24.3	25.5	24.7	25.8	26.0
	3H	25.9	26.8	26.3	27.2	27.6	25.9	26.8	26.3	27.2	27.6
	4H	26.3	27.2	26.8	27.6	28.2	26.3	27.2	26.8	27.6	28.2
	6H	26.6	27.4	27.1	27.8	28.1	26.6	27.4	27.1	27.8	28.1
	8H	26.6	27.4	27.1	27.7	28.1	26.6	27.4	27.1	27.7	28.1
	12H	26.6	27.2	27.1	27.7	28.1	26.6	27.2	27.1	27.7	28.1
8H	4H	26.5	27.3	27.0	27.6	28.0	26.5	27.3	27.0	27.6	28.0
	6H	26.8	27.4	27.3	27.9	28.4	26.8	27.4	27.3	27.9	28.4
	8H	26.9	27.4	27.4	27.9	28.6	26.9	27.4	27.4	27.9	28.6
	12H	26.9	27.4	27.5	27.9	28.5	26.9	27.4	27.5	27.9	28.5
12H	4H	26.5	27.1	27.0	27.5	28.0	26.5	27.1	27.0	27.5	28.0
	6H	26.9	27.4	27.4	27.9	28.5	26.9	27.4	27.4	27.9	28.5
	8H	26.9	27.3	27.5	27.8	28.5	26.9	27.3	27.5	27.8	28.5

Variations with the observer position for the luminaire spacings. S:

S = 1.0H	0.1 / -0.2	0.1 / -0.2
S = 1.5H	0.2 / -0.4	0.2 / -0.4
S = 2.0H	0.6 / -0.8	0.6 / -0.8

Coefficients of Utilization

Ceiling reflectance	80	70	50	30	10	0											
Wall reflectance	70 50 30	10 70 50	30 10 50	30 10 50	30 10 50	30 10 0											
Floor reflectance	20 20 20	20 20 20	20 20 20	20 20 20	20 20 20	20 20 0											
RCR	(RCR: Room Cavity Ratio)																
Room Values are expressed as percentage of Lumen delivered to the task surface																	
0	119	119	119	119	116	116	116	116	111	111	106	106	106	102	102	102	
1	109	105	101	97	107	103	99	96	98	95	93	94	92	90	91	89	87
2	100	92	85	80	97	90	84	79	86	81	77	83	79	75	80	77	73
3	91	81	73	66	89	79	72	66	76	70	65	73	68	64	71	66	62
4	83	72	63	56	81	70	62	56	68	61	55	65	59	55	63	58	54
5	77	64	55	49	75	63	55	48	61	53	48	59	52	47	57	51	47
6	71	58	49	43	69	57	48	42	55	48	42	53	47	42	52	46	41
7	66	52	44	38	64	52	43	37	50	43	37	49	42	37	47	41	37
8	61	48	39	34	60	47	39	33	46	38	33	45	38	33	43	37	33
9	57	44	36	30	56	43	35	30	42	35	30	41	34	30	40	34	30
10	54	40	33	27	52	40	32	27	39	32	27	38	32	27	37	31	27