

—
INSTALLATION INSTRUCTION

Switch fuses

OS200-250_S

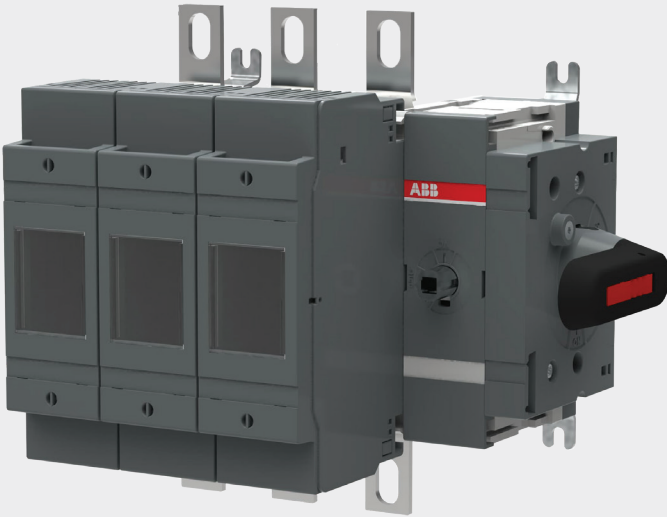
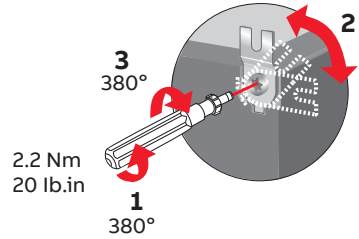
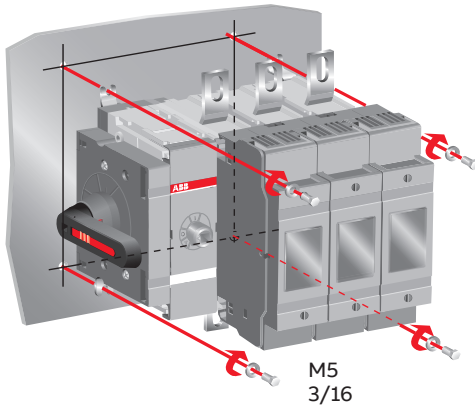
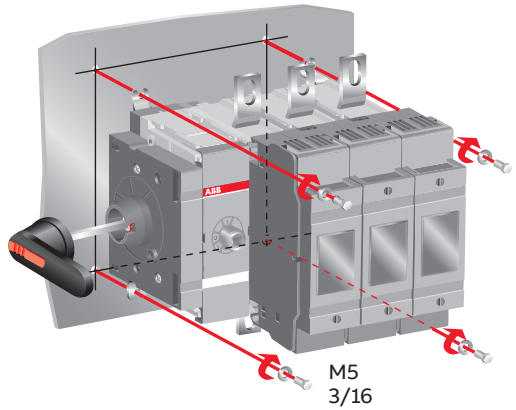


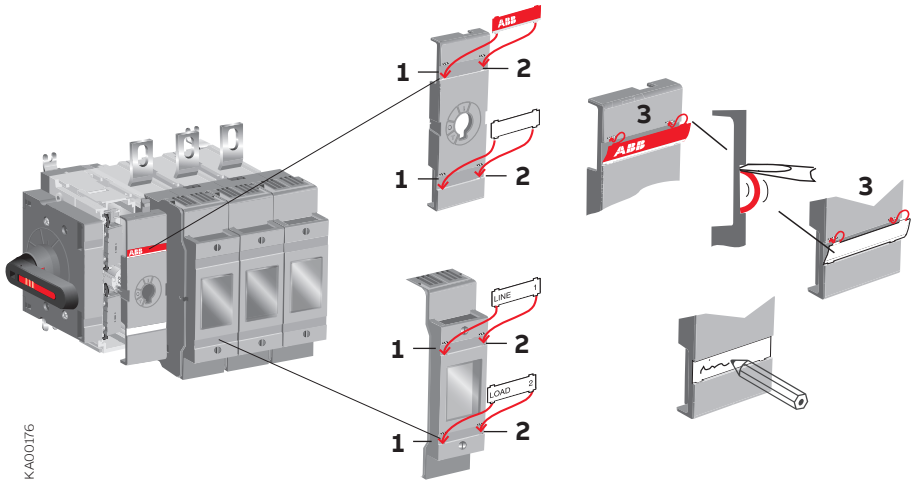
Table of contents

03	Installation
04	Labels
05	Clearances per UL98
06	Terminal shrouds OSS_
07	Terminal clamps OZX_
08	Fuse links
09	Auxiliary contacts OA_
10	Fourth pole OSP_
11	Handles
12	Neutral link OS_N3 & OXN250X
13	Electronic fuse monitor OFS_
14	Module for aux contacts OEA28_
15	Blown fuse indicator DPMM_
16-17	Dimension drawings
19	Warning table

Installation

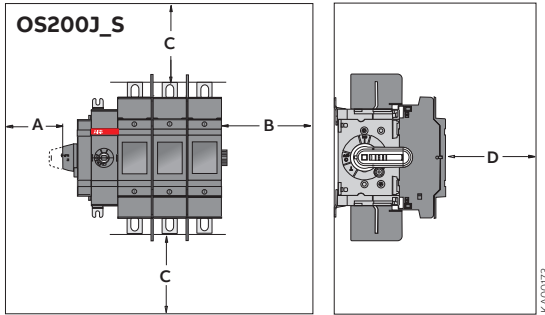
OS200-250_S_K**OS200-250_S_**

Labels



K400176

Clearances per UL98



Minimum enclosure size or equivalent volume

Height	Width	Depth
600 mm 23.6 in	350 mm 13.8 in	200 mm 7.9 in

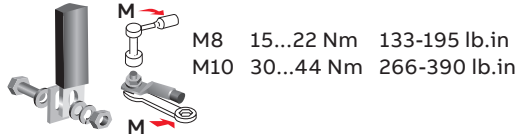
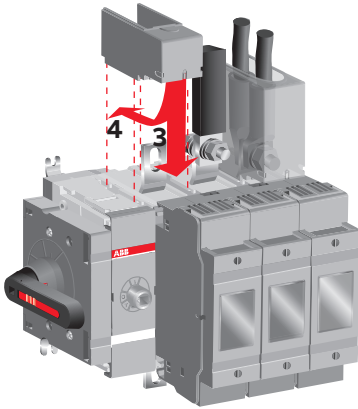
A	B	D
0	13 mm / 0.5 in	13 mm / 0.5 in

Cable size

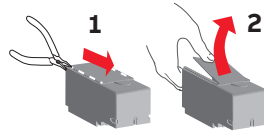
AWG	C	MCM	C
4-3	100 mm 4 in	250	200 mm 8 in
2	100 mm 4 in	300	200 mm 10 in
1	100 mm 4 in		
1/0	125 mm 5 in		
2/0	150 mm 6 in		
3/0-4/0	175 mm 7 in		

Terminal shrouds

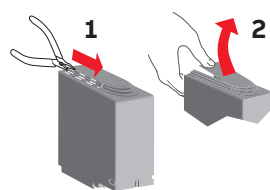
OSS_



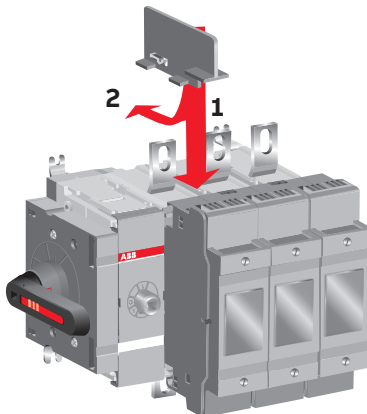
OSS200^G1S OSS250^G1S



OSS200^G1L OSS250^G1L

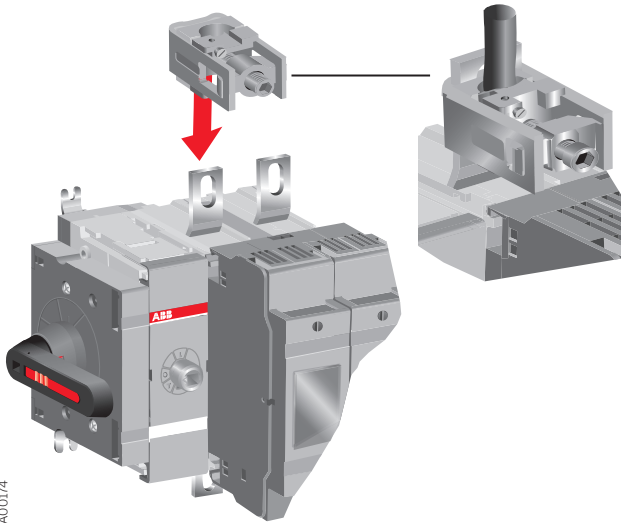


Barriers 68794 or shrouds must always be used on OS200J_



Terminal clamps

OZX_



KA00174

OS200

OZXB1L
OZXB2
OZXB2L
OZXB8

OS250

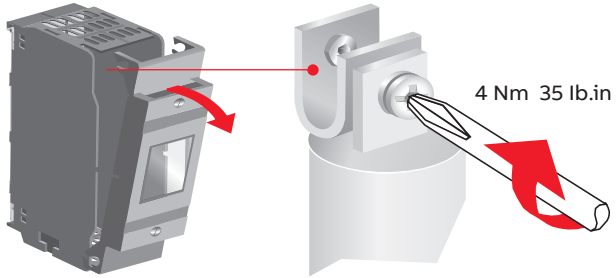
OZXB1L
OZXB2L
OZXB3
OZXB4
OZXB5
OZXB7L
OZXB8

OS200J

OZXA-200_
OZXA-206_

Fuse links

S01807A



OS200-250_S
DIN fuse



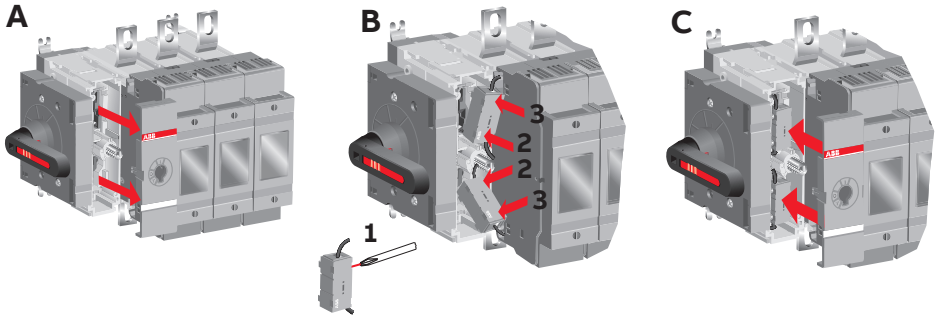
OS200-250B_S
BS fuse



OS200J_S
UL fuse

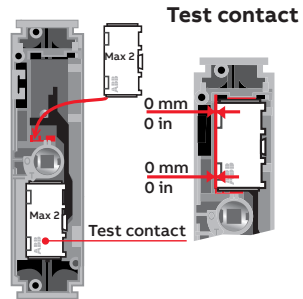
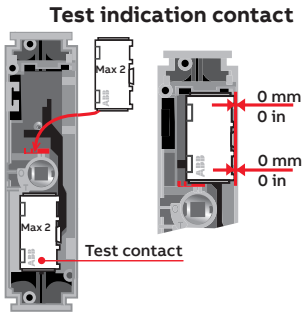
Auxiliary contacts

OA_

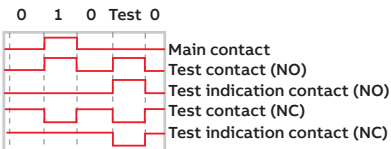
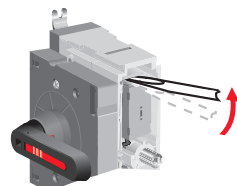


NO: OA1G10

NC: OA3G01



Remove



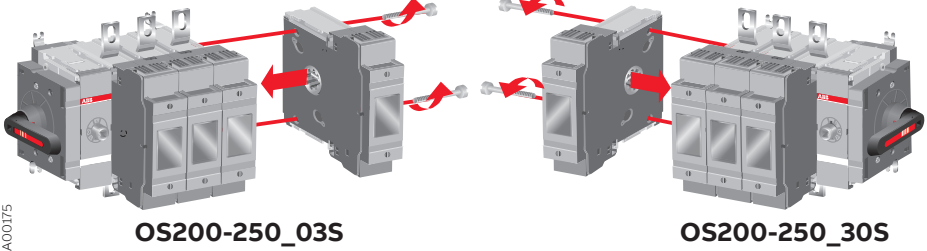
KA00181

Fourth pole

OSP_

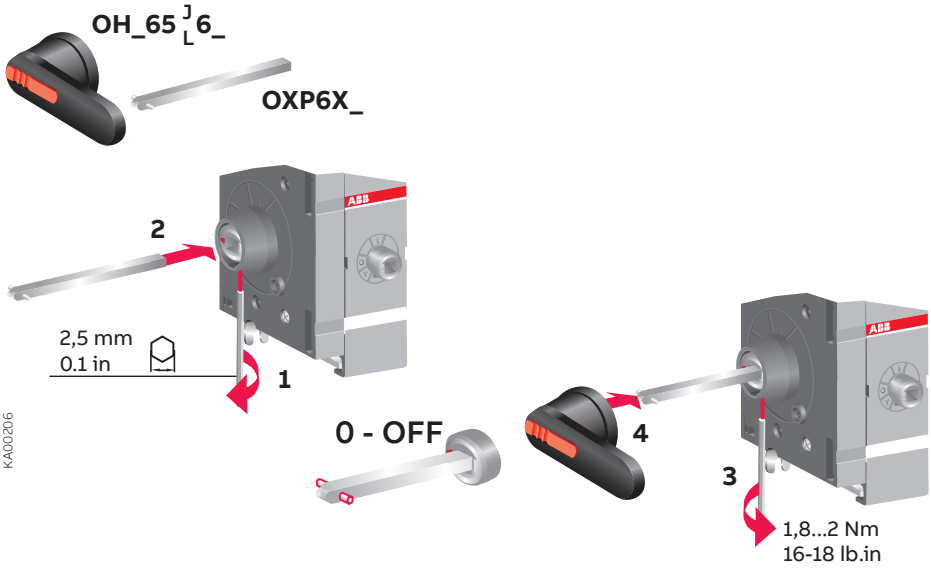
OSP200N
OSP200D
OSP200B
OSP250N
OSP250D

0.8 Nm 7 lb.in
OS200_S M4x40
OS250_S M4x50



KA00175

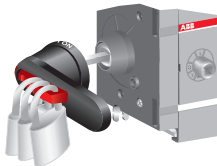
Handles



KA00206

OS200_S

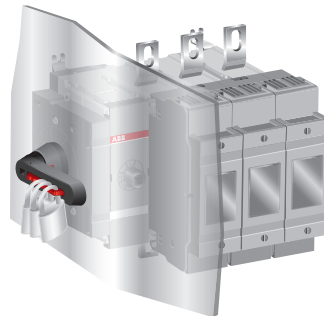
Ø5...10 mm



Note: Use protection against direct contact.
For example:

OS200_S_K

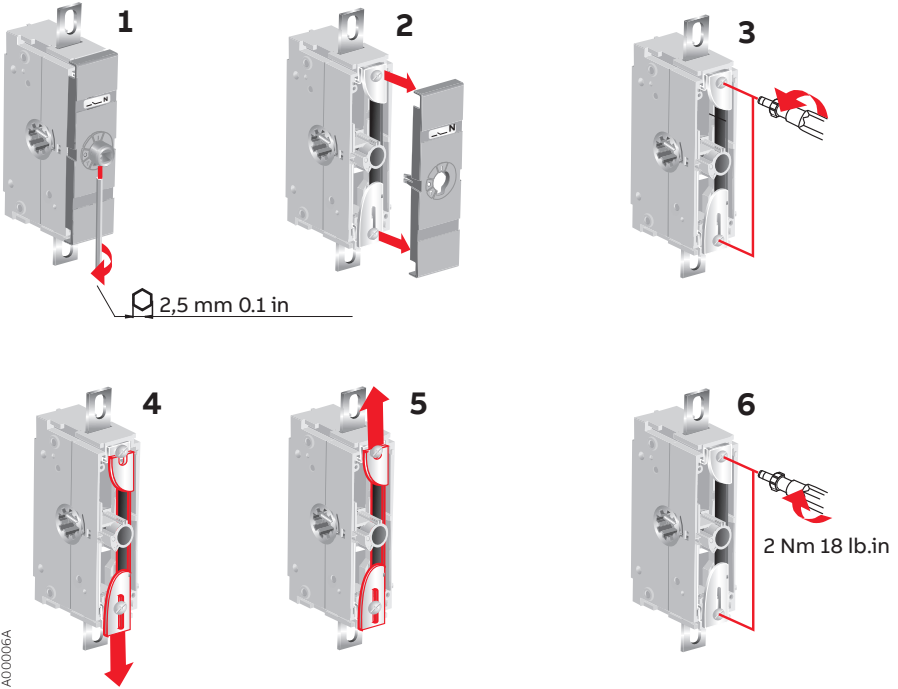
Ø5...6 mm



KA00207

Neutral link

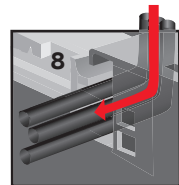
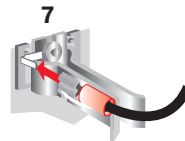
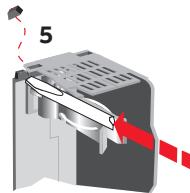
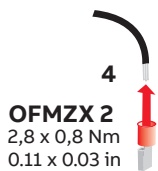
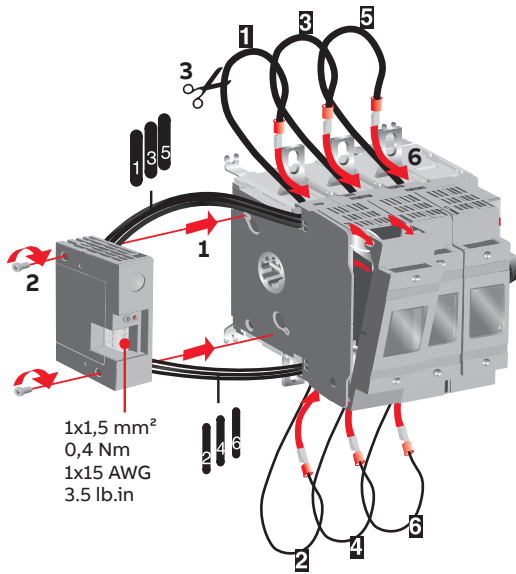
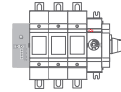
OS_N3 & OXN250X



Electronic fuse monitor OFS_

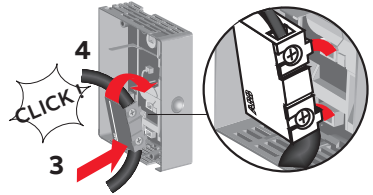
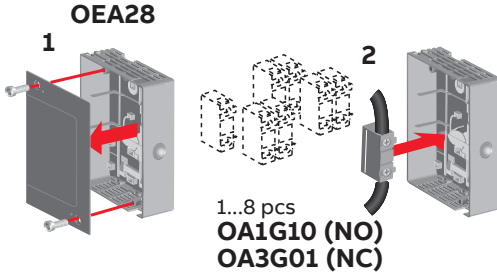
OS250_S + OFS_

Note: Mounting directly on switch-fuse is possible only on OS_S30 and S40 types.

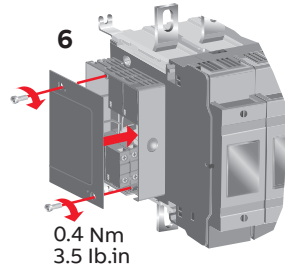
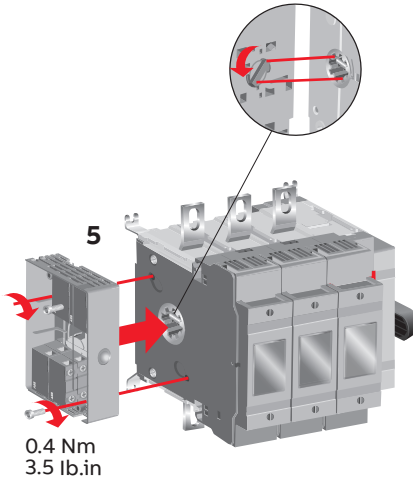
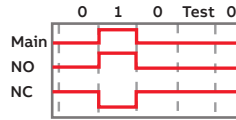


Module for aux contacts

OEA28_



Note: Only for OS_S10, OS_S20, OS_S30 and OS_S40 types.

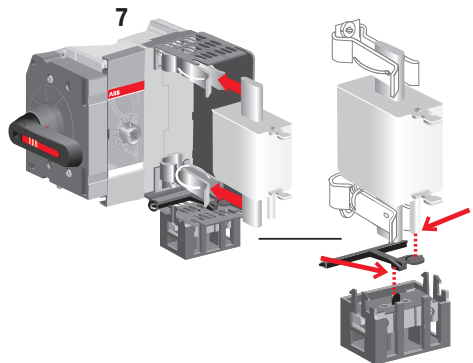
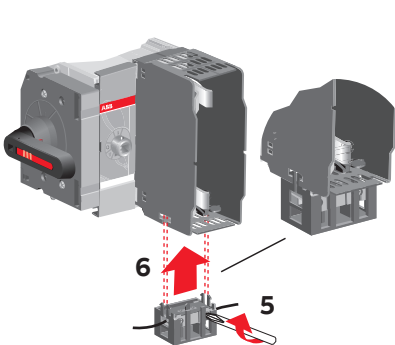
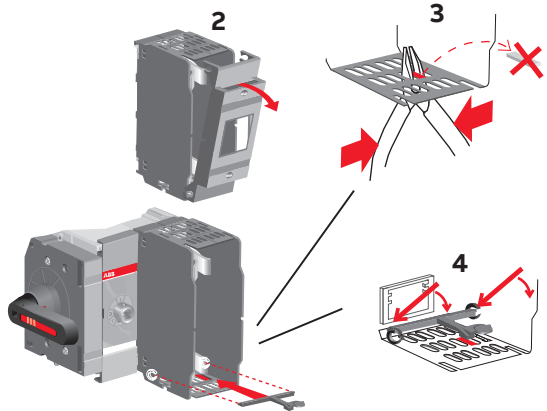
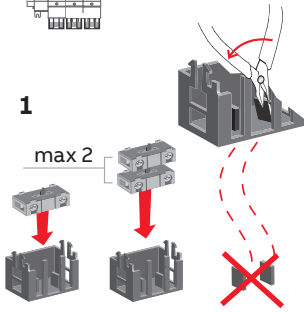


KA00180

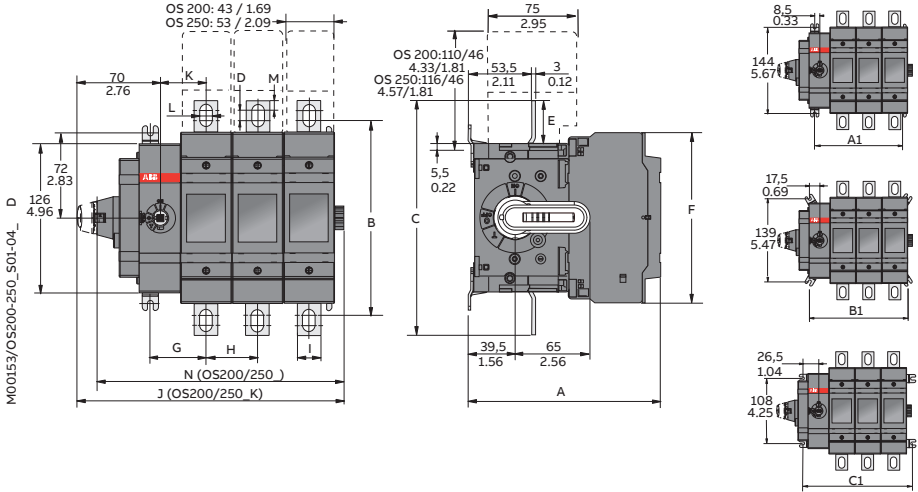
Blown fuse indicator

DPMM_

OS250_S + DPMM_



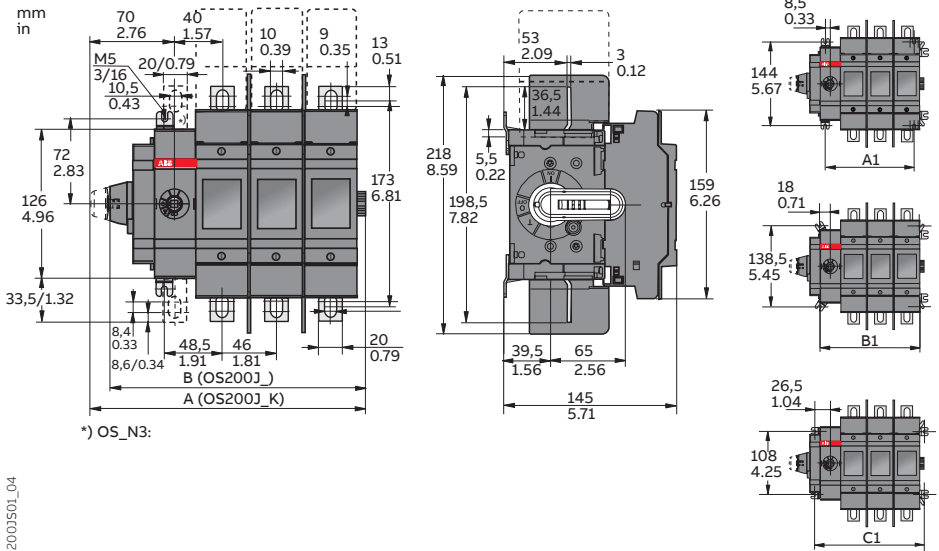
Dimension drawings



		OS200_ OS200_K							
mm		DS01	BS01	DS02	BS02	DS03	BS03	DS04	BS05
in									
A		162,0/6.38	143,0/5.63	162,0/6.38	143,0/5.63	162,0/6.38	143,0/5.63	162,0/6.38	143,0/5.63
B		164,5/6.48	164,5/6.48	164,5/6.48	164,5/6.48	164,5/6.48	164,5/6.48	164,5/6.48	164,5/6.48
C		109,5/7.81	198,5/7.81	109,5/7.81	198,5/7.81	109,5/7.81	198,5/7.81	109,5/7.81	198,5/7.81
D		8,5/0.33	8,5/9.33	8,5/0.33	8,5/9.33	8,5/0.33	8,5/9.33	8,5/0.33	8,5/9.33
E		36,5/1.44	36,5/1.44	36,5/1.44	36,5/1.44	36,5/1.44	36,5/1.44	36,5/1.44	36,5/1.44
F		144,5/5.69	144,5/5.69	144,5/5.69	144,5/5.69	144,5/5.69	144,5/5.69	144,5/5.69	144,5/5.69
G		48,5/1.91	48,5/1.91	48,5/1.91	48,5/1.91	48,5/1.91	48,5/1.91	48,5/1.91	48,5/1.91
H		-/-	-/-	43,5/1.71	43,5/1.71	43,5/1.71	43,5/1.71	43,5/1.71	43,5/1.71
I		20,0/0.79	20,0/0.79	20,0/0.79	20,0/0.79	20,0/0.79	20,0/0.79	20,0/0.79	20,0/0.79
J		138,5/5.45	138,5/5.45	182,0/7.17	182,0/7.17	225,5/8.88	225,5/8.88	269,0/10.59	269,0/10.59
K		40,0/1.57	40,0/1.57	40,0/1.57	40,0/1.57	40,0/1.57	40,0/1.57	40,0/1.57	40,0/1.57
L		10,0/0.39	10,0/0.39	10,0/0.39	10,0/0.39	10,0/0.39	10,0/0.39	10,0/0.39	10,0/0.39
M		8,5/0.33	8,5/0.33	8,5/0.33	8,5/0.33	8,5/0.33	8,5/0.33	8,5/0.33	8,5/0.33
N		121,5/4.78	121,5/4.78	4.78/6.50	4.78/6.50	308,5/8.21	308,5/8.21	252,0/9.92	252,0/9.92
A1		60,5/2.38	60,5/2.38	104,0/4.09	104,0/4.09	147,5/5.81	147,5/5.81	191,0/7.52	191,0/7.52
B1		79,5/3.13	79,5/3.13	123,0/4.82	123,0/4.82	165,5/6.56	165,5/6.56	210,0/8.27	210,0/8.27
C1		96,5/3.80	96,5/3.80	140,0/5.51	140,0/5.51	183,5/7.22	183,5/7.22	227,0/8.94	227,0/8.94

Dimension drawings

OS200JS_



mm in	OS200JS_ OS200JS_K			
	01	02	03	04
A	123,0/4.85	169,0/6.66	215,0/8.47	261,0/14.28
B	140,0/5.51	186,0/7.33	232,0/9.14	278,0/10.95
A1	60,5/2.38	106,5/4.2	152,5/6.01	198,5/7.82
B1	79,5/3.13	125,5/4.94	171,5/6.75	217,5/8.57
C1	96,5/3.80	142,5/5.61	188,5/7.42	234,5/9.24



BG	Внимание! Опасно напряжение! Да се монтира само от лице с електротехническа квалификация.
CN	警告！电压危险！只能由专业电工进行安装。
CZ	Varování! Nebezpečné napětí! Montáž smí provádět výhradně elektrotechnik!
DA	Advarsel! Farlig elektrisk spænding! Installation må kun foretages af personer med elektroteknisk ekspertise.
DE	Warnung! Gefährliche Spannung! Installation nur durch elektrotechnische Fachkraft.
EL	Προειδοποίηση! Υψηλή τάση! Η εγκατάσταση πρέπει να γίνεται μόνο από εξειδικευμένους ηλεκτροτεχνικούς.
EN	Warning! Hazardous voltage! Installation by person with electrotechnical expertise only.
ES	¡Advertencia! ¡Tensión peligrosa! La instalación deberá ser realizada únicamente por electricistas especializados.
ET	Hoiatus! Ohtlik pinge. Paigaldada võib ainult elektrotehnika-alane ekspert.
FI	Varoitus! Vaarallinen jännite! Asennuksen voi tehdä vain sähköalan ammattihenkilö.
FR	Avertissement! Tension électrique dangereuse! Installation uniquement par des personnes qualifiées en électrotechnique.
HR	Upozorenje! Opasan napon! Postavljati smije samo elektrotehnički stručnjak.
HU	Figyelmeztetés! Veszélyes feszültség! Csak elektrotechnikai tapasztalattal rendelkező szakember helyezheti üzembe.
IE	Rabhadh! Voltas guaiseach! Ba chóir do dhuine ag a bhfuil saineolas leictreicniúil, agus an té sin amháin, é seo a shuiteáil.
IT	Avvertenza! Tensione pericolosa! Fare installare solo da un elettricista qualificato.
LT	Dėmesio! Pavojinga įtampa! Dirbti leidžiama tik elektrotechniko patirties turintiems asmenims.
LV	Uzmanību! Bīstami - elektrība! Montāžas darbus drīkst veikt tikai personas, kurām ir atbilstošas elektrotehnikās zināšanas.
MT	Twissija! Vultaġġ perikoluż! Għandu jiġi installat biss minn persuna b'kompetenza elettroteknika.
NL	Waarschuwing! Gevaarlijke spanning! Mag alleen geïnstalleerd worden door een deskundige elektrotechnicus.
NO	Advarsel! Farlig spenning! Montering skal kun utføres av kvalifiserte personer med elektrokompetanse.
PL	Ostrzeżenie! Niebezpieczne napięcie! Instalacji może dokonać wyłącznie osoba z fachową wiedzą w dziedzinie elektrotechniki.
PT	Aviso! Tensão perigosa! A instalação só deve ser realizada por um electricista especializado.
RO	Avertizare! Tensiune periculoasă! Instalarea trebuie efectuată numai de către o persoană cu experiență în electrotehnică.
RU	Осторожно! Опасное напряжение! Монтаж должен выполняться только специалистом-электриком.
SE	Varning! Farlig spänning! Installation får endast utföras av en elektriker.
SK	Varovanie! Nebezpečné napätie! Montáž môže vykonávať iba skúsený elektrotechnik.
SL	Opozorilo! Nevarna napetost! Vgradnjo lahko opravi le oseba z elektrotehničnim strokovnim znanjem.



Contact us

ABB Oy

Muottitie 2A, 65320

Vaasa, Finland

abb.com/lowvoltage