



PHOTOMETRIC LIGHT REPORT

**Refl downl matt | Ø170mm
| black | 3-CCT | 6~15W |
EU plug**

Article number: 136-136



Go to the
webshop
of Tronix
Lighting



TRONIX



136-136 Refl downl matt | Ø170mm | black | 3-CCT | 6~15W | EU plug

Introduction

Purpose of this Document

This document provides accurate and objective photometric data for Tronix Lighting item 136-136. All information is based on actual measurements taken from standard production units. No modifications were made to enhance performance results. In some cases, minor adjustments—such as temporary removal of covers, cables, or mounting features—were necessary for testing purposes. These did not influence product performance.

Test Methodology

Testing was conducted using randomly selected, unopened samples from regular inventory. All tests comply with the LM-79-19 standard, the recognized method for photometric and electrical measurements of LED and OLED luminaires. This standard, an update of IES LM-79-2008, outlines environmental test conditions, stabilization procedures, measurement methods, and approved instruments. It uses absolute photometry, meaning results directly reflect the performance of the tested product, without comparison to rated lamp standards.

Product 136-136 was tested using:

- A photogoniometer to measure luminous intensity distribution at various angles
- An integrating sphere to determine total luminous flux and colour characteristics

Compliance & Certification

Item 136-136 meets the requirements of the following EU directives. Tronix Lighting certifies that all relevant tests were executed in accordance with the applicable standards, and the CE mark is applied accordingly:

- General Product Safety – Directive 2023/988/EC
- Low Voltage Directive (LVD) – Directive 2014/35/EU
- Electromagnetic Compatibility (EMC) – Directive 2004/108/EC
- Ecodesign – Directive 2009/125/EC
- RoHS 3 – Directive 2011/65/EU + Amendment 2015/863/EU

Recycling & Sustainability

Tronix Lighting is affiliated with national recycling systems for electrical and electronic waste. The luminaire is over 90% recyclable when disposed of as electronic waste at end of life. In addition, Tronix Lighting participates in national packaging recycling schemes, ensuring full compliance with both the WEEE and packaging directives.



136-136 Refl downl matt | Ø170mm | black | 3-CCT | 6~15W | EU plug

Laboratory and equipment

Laboratory owner and location	Tronix Lighting BV. Uden. The Netherlands
Gonio spectrometer system and type	Viso Systems Type C. horizontal
Spectrometer manufacturer and model	(Gonio) Ocean Optics STS VIS (Sphere) Admesy HERA VIS 380–780nm
Flicker meter manufacturer and model	Viso Systems LabFlicker
Oscilloscope manufacturer and model	Tektronix MDO3024 oscilloscope (4 Channels. 200 MHz)
Power meter manufacturer and model	Vitrek PA900 Precision Multi-Channel Harmonic Power Analyzer
Power source manufacturer and model	(DC) Keithley Source Measure Unit SMU-2420 3A DC Source Meter (AC) Chroma 61601 AC Source
Datalogger Manufacturer and Model	Omega 8-Channel Thermocouple Thermometer/Data Logger

Measurement conditions gonio spectrometer

Number of C-planes and Resolution	2 planes – 180°
γ (gamma)-Resolution	1°
Test Distance	1.81 m
Room Temperature and Humidity	22°C +/- 10% – RH 50% +/- 20%
Input Power. Power and Displacement Factors	14.0 W – PF 0.97 – DPF 0.97
Frequency of Input Power	50 Hz
Warm-up Time and Variation	Lamp stabilized in 15 min 3 sec --0.6%

Tested light source

Manufacturer and Order Code	Tronix Lighting – 136-136
Product Description	Refl downl matt Ø170mm black 3-CCT 6~15W EU plug

Main Light Measurement Results

Output – Total Lumen (Up% / Down%)	1665 lm – 0% / 100%
Efficiency	119 lm/W
Energy efficiency class	E
Peak Intensity and Beam Angle	1565 cd – 60.1°
Correlated Colour Temperature	CCT = 4220 K
Colour Shift. CIE duv	Duv -0.0050
Colour Rendering Index	CRI 86.2
Colour Rendering TM30-18	R _f 84.4 – R _g 97.4
Television Lighting Consistency Index	TLCI = 72
Flicker	SVM 0 – PstLM 0.02



136-136 Refl downl matt | Ø170mm | black | 3-CCT | 6~15W | EU plug

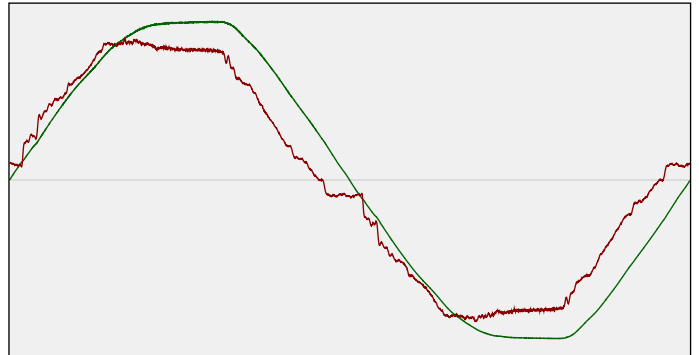
Electrical measurement details

Input Power

RMS Input voltage feed. V_{RMS}	232 V
RMS Input current feed. I_{RMS}	0.062 A
Total input power	14.0 W
Frequency of input power	50 Hz
Power factor	0.97
Displacement power factor	0.97
Total harmonic distortion of the current	8.95%
Total harmonic distortion of the voltage	2.93%

Input Power Curve

Voltage - Current



Efficiency

Radiated power efficiency: 37.4%



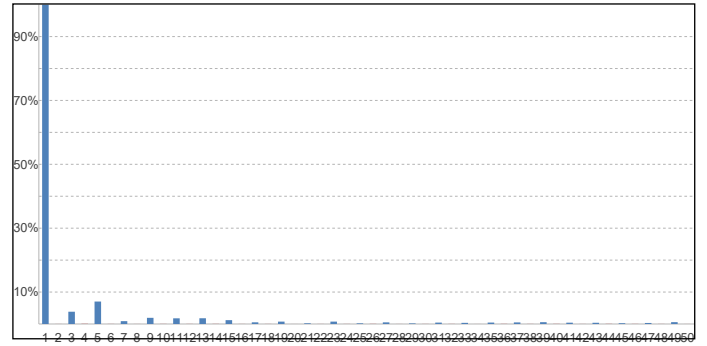
Lumen efficiency: 119 lm/W



Harmonics

3rd Harmonic	3.84%
5th Harmonic	7.03%
7th Harmonic	0.89%
9th Harmonic	1.93%
11th Harmonic	1.78%

Current Harmonics %



Stabilization Details

Warm-up Conditions

Stable period	15 min
Stable change max	2.0%
Minimum warm-up time	15 min

Colour temperature change during warm-up

CCT start	4215 K
CCT shift	+5 K
CCT end	4220 K

Warm-up Results

Total warmup time	Lamp stabilized in 15 min 3 sec
Warmup variation	-0.6%

Output intensity change during warm-up

Output start	1674 lm
Output change	-9 lm
Output end	1665 lm



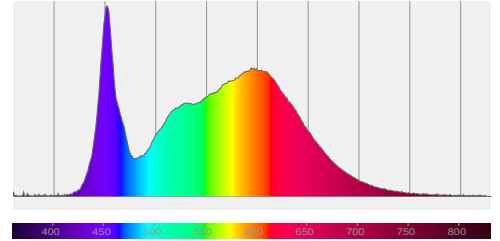
136-136 Refl downl matt | Ø170mm | black | 3-CCT | 6~15W | EU plug

Colour measurement details

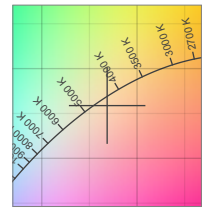
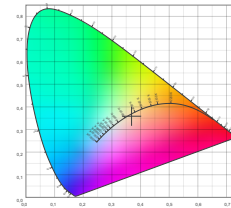
Total lumen output: 1665 lm
 Correlated Colour Temperature: 4220 K
 Colour coordinates CIE 1931: (x;y) = (0.369;0.359)
 Colour deviation from BBL: Duv = -0.0050

TM30-18 Colour Fidelity Index: R_f 84.4
 TM30-18 Colour Gamut Index: R_g 97.4
 Colour Rendering Index (Ra): CRI 86.2
 Colour Rendering Index. (red component): R9 = 23.6

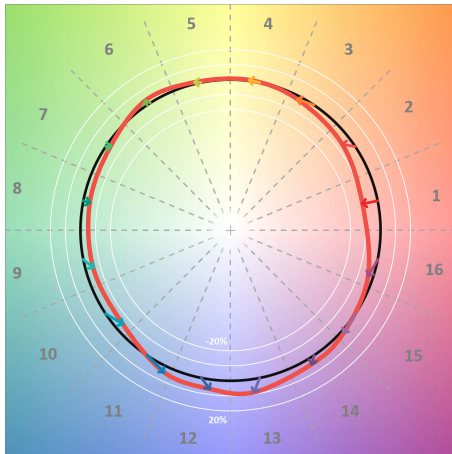
Colour Quality Scale: CQS = 82.9
 Television Lighting Consistency Index: TLCI = 72



Relative spectral power distribution



TM30 details

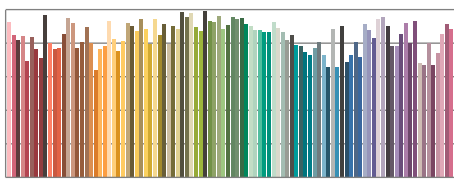


TM30 Colour vectors per hue bin

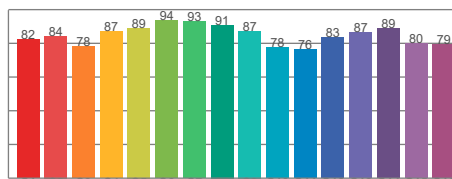


TM30 Colour distortion

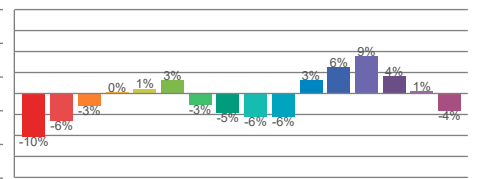
Hue Bin	R _f	Shifts (%)	
		Chroma	Hue
C1	82	-10%	0%
C2	84	-6%	6%
C3	78	-3%	11%
C4	87	0%	7%
C5	89	1%	4%
C6	94	3%	-1%
C7	93	-3%	-2%
C8	91	-5%	0%
C9	87	-6%	7%
C10	78	-6%	12%
C11	76	3%	16%
C12	83	6%	7%
C13	87	9%	-6%
C14	89	4%	-5%
C15	80	1%	-15%
C16	79	-4%	-12%



TM30-18 Rf-values per reference colour

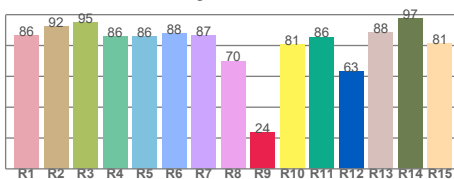


TM30-18 Rf-values per hue bin

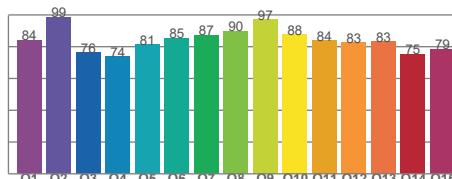


TM30 Chroma shift

Colour Quality details



Colour Rendering Index



Colour Quality Scale



136-136 Refl downl matt | Ø170mm | black | 3-CCT | 6~15W | EU plug

Flicker / temporal light artefacts details

Measurement conditions

Flicker meter type	Viso Systems LabFlicker
Flicker/TLA sample rate	20000 samples/s
Measurement time	5x 180 seconds (15 minutes) for PstLM. 1.2 sec for all other indices

Flicker indices according to Illuminating Engineering Society (IES)

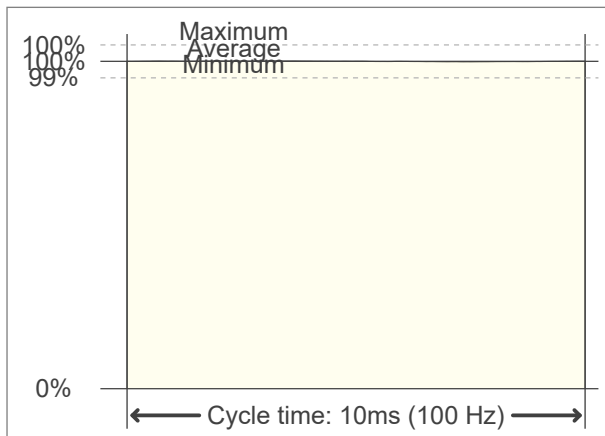
Flicker frequency	100 Hz
Percent flicker	0.2 %
Flicker index	0

TLA indices (according IEC TR 61547-1. EN 61000-3-3 and EN 61000-4-15)

An LED luminaire is considered flicker-free if the SVM value is ≤ 0.4 and if the PstLM value is ≤ 1.0

PstLM value (F < 80 Hz)	0.02
SVM value (80 < F < 2000 Hz)	0

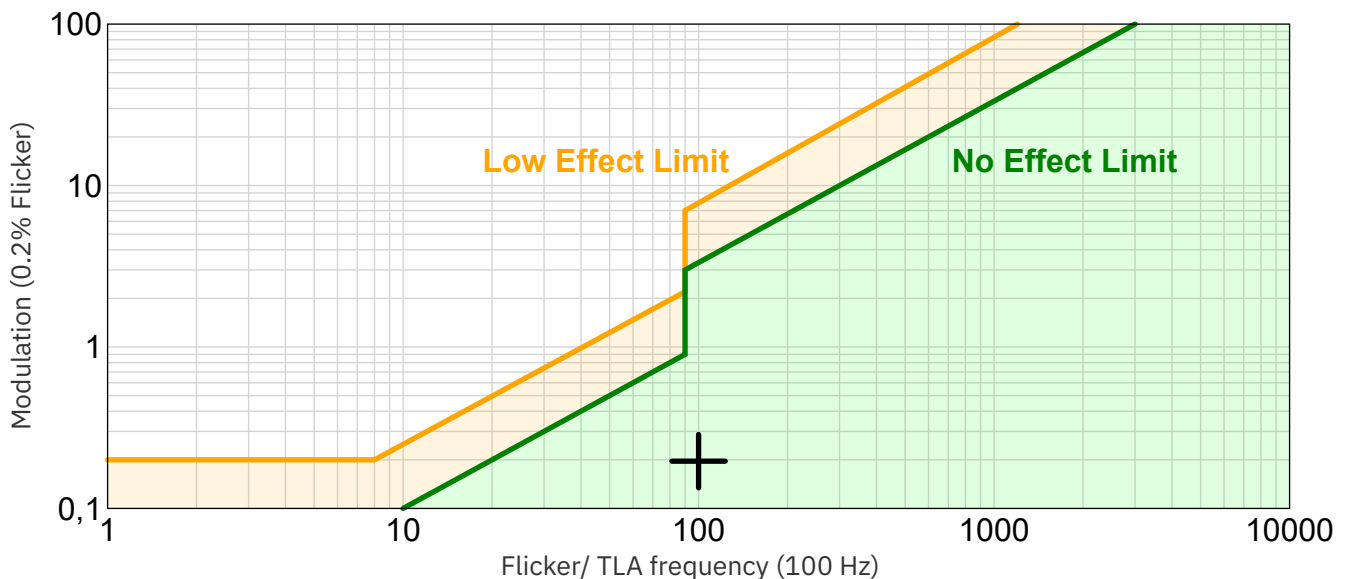
Flicker frame (one flicker period in time domain)



Flicker FFT (flicker curve in frequency domain)



IEEE 1789-2015 Lighting Flicker Risk Zones



Document revision date: 1-7-2025 Measurement serial: VFR-250124-1050-MS

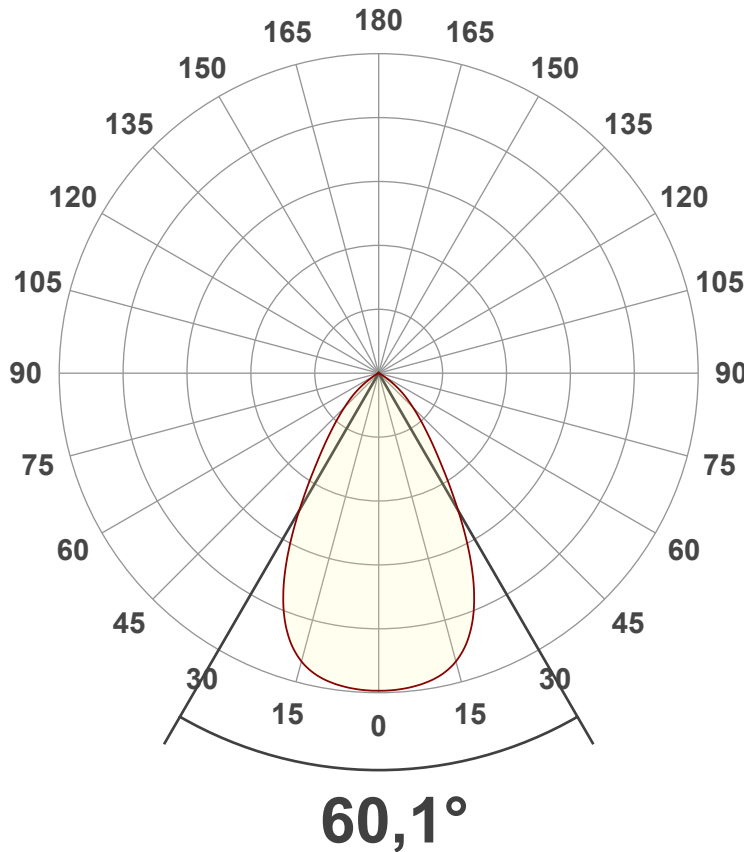


136-136 Refl downl matt | Ø170mm | black | 3-CCT | 6~15W | EU plug

Beam angle

Luminous Intensity diagram

Unit: 0-100% of peak intensity



Main Values

Output (total Lumen)	1665 lm
Lumen Up/Down	0% / 100%
Peak Intensity	1565 cd
Beam Angle (50%)	60.1°
Beam Angle (90%)	60.1°
Beam Angle (10%)	60.1°

Cut-off Angle

Average 2.5%	116.1°
--------------	--------

Field Angle

Average 10%	99.9°
-------------	-------

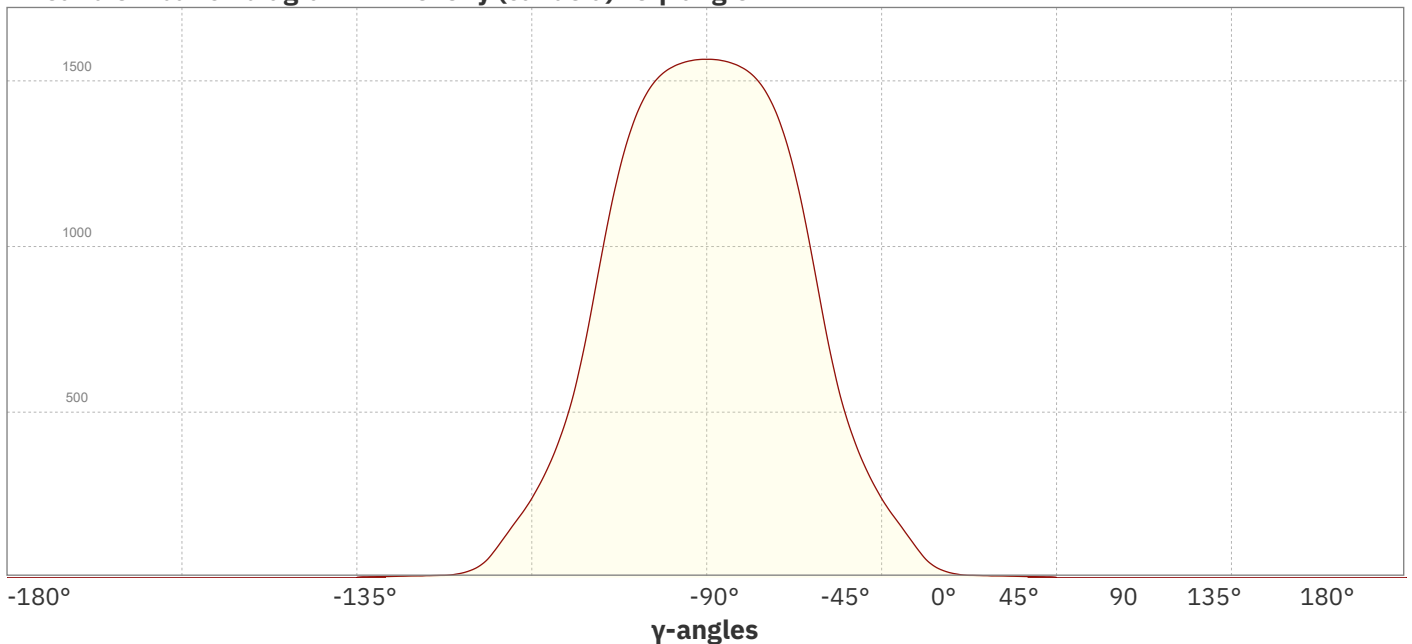
Intensity Ratio

In 120° cone	98.7%
In 90° cone	89.7%

C planes

- C000-C180
- C090-C270

Linear distribution diagram - Intensity (candela) vs γ -angle

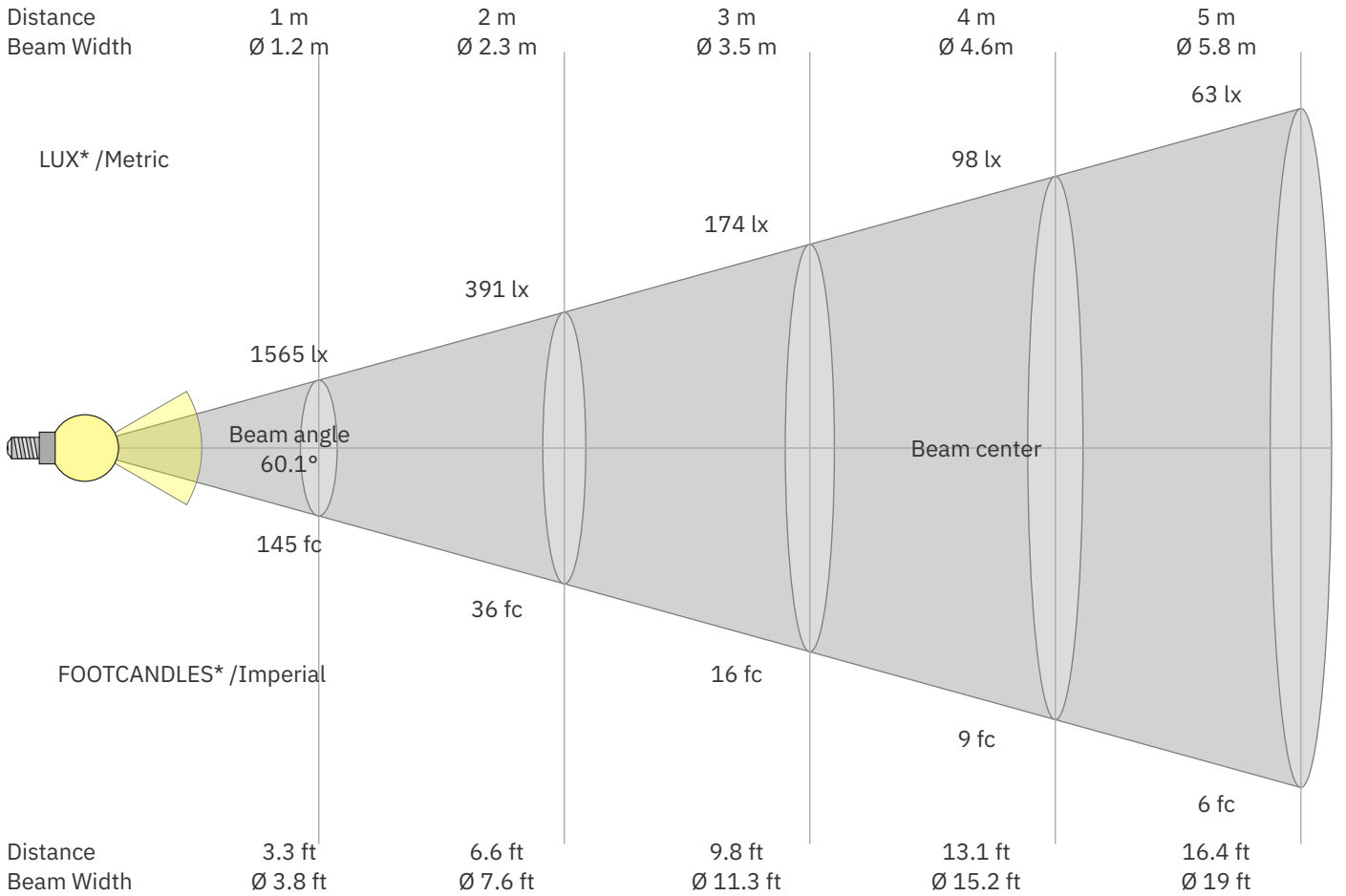


Document revision date: 1-7-2025 Measurement serial: VFR-250124-1050-MS



136-136 Refl downl matt | Ø170mm | black | 3-CCT | 6~15W | EU plug

Beam Details



*Measured at center of beam

Beam intensities from 1 – 20 m

1	2	3	4	5	6	7	8	9	10	11	12	13	14	15	16	17	18	19	20	m
3.3	6.6	9.8	13.1	16.4	19.7	23	26.2	29.5	32.8	36.1	39.4	42.7	45.9	49.2	52.5	55.8	59.1	62.3	65.6	ft
1565	391	174	98	63	43	32	24	19	16	13	11	9	8	7	6	5	5	4	4	lux
145.4	36.3	16.2	9.1	5.8	4	3	2.3	1.8	1.5	1.2	1	0.9	0.7	0.6	0.6	0.5	0.4	0.4	0.4	fc

Intensities in 0° c-plane

0°	2°	4°	6°	8°	10°	12°	14°	16°	18°	20°	22°	24°	26°	28°	30°	32°	34°	36°	38°	γ
1565	1564	1561	1555	1546	1534	1515	1488	1450	1399	1333	1252	1153	1038	913	786	668	566	483	414	cd
100%	100%	100%	99%	99%	98%	97%	95%	93%	89%	85%	80%	74%	66%	58%	50%	43%	36%	31%	26%	of 0°val

Intensities in 90° c-plane

0°	2°	4°	6°	8°	10°	12°	14°	16°	18°	20°	22°	24°	26°	28°	30°	32°	34°	36°	38°	γ
1565	1564	1561	1555	1546	1534	1515	1488	1450	1399	1333	1252	1153	1038	913	786	668	566	483	414	cd
100%	100%	100%	99%	99%	98%	97%	95%	93%	89%	85%	80%	74%	66%	58%	50%	43%	36%	31%	26%	of 0°val

Intensities in 180° c-plane

0°	2°	4°	6°	8°	10°	12°	14°	16°	18°	20°	22°	24°	26°	28°	30°	32°	34°	36°	38°	γ
1565	1564	1561	1555	1546	1534	1515	1488	1450	1399	1333	1252	1153	1038	913	786	668	566	483	414	cd
100%	100%	100%	99%	99%	98%	97%	95%	93%	89%	85%	80%	74%	66%	58%	50%	43%	36%	31%	26%	of 0°val

Intensities in 270° c-plane

0°	2°	4°	6°	8°	10°	12°	14°	16°	18°	20°	22°	24°	26°	28°	30°	32°	34°	36°	38°	γ
1565	1564	1561	1555	1546	1534	1515	1488	1450	1399	1333	1252	1153	1038	913	786	668	566	483	414	cd
100%	100%	100%	99%	99%	98%	97%	95%	93%	89%	85%	80%	74%	66%	58%	50%	43%	36%	31%	26%	of 0°val

Document revision date: 1-7-2025 Measurement serial: VFR-250124-1050-MS





136-136 Refl downl matt | Ø170mm | black | 3-CCT | 6~15W | EU plug

Light Planning – UGR table

Uncorrected, comprehensive UGR table according to CIE 117-1995

Reflectances		70	70	50	50	30	70	70	50	50	30
ρ Ceiling		70	70	50	50	30	70	70	50	50	30
ρ Walls		50	30	50	30	30	50	30	50	30	30
ρ Floor		20	20	20	20	20	20	20	20	20	20
Room size		Viewed Crosswise					Viewed Endwise				
H = mounting height above eye level		(Viewing direction orthogonal to lamp length axis)					(Viewing direction parallel to lamp length axis)				
X	Y										
2H	2H	19.9	20.6	20.0	20.8	21.0	19.9	20.6	20.0	20.8	21.0
	3H	19.6	20.4	20.0	20.7	20.8	19.6	20.4	20.0	20.7	20.8
	4H	19.5	20.3	19.9	20.6	20.8	19.5	20.3	19.9	20.6	20.8
	6H	19.6	20.2	19.9	20.5	20.9	19.6	20.2	19.9	20.5	20.9
	8H	19.5	20.2	19.8	20.5	20.9	19.5	20.2	19.8	20.5	20.9
	12H	19.5	20.1	19.8	20.5	20.9	19.5	20.1	19.8	20.5	20.9
4H	2H	19.6	20.4	20.0	20.6	20.8	19.6	20.4	20.0	20.6	20.8
	3H	19.5	20.1	19.8	20.5	20.9	19.5	20.1	19.8	20.5	20.9
	4H	19.4	20.0	19.8	20.4	20.9	19.4	20.0	19.8	20.4	20.9
	6H	19.3	19.9	19.8	20.3	20.6	19.3	19.9	19.8	20.3	20.6
	8H	19.3	19.9	19.8	20.2	20.6	19.3	19.9	19.8	20.2	20.6
	12H	19.3	19.7	19.8	20.1	20.6	19.3	19.7	19.8	20.1	20.6
8H	4H	19.3	19.8	19.8	20.2	20.5	19.3	19.8	19.8	20.2	20.5
	6H	19.3	19.6	19.8	20.1	20.6	19.3	19.6	19.8	20.1	20.6
	8H	19.3	19.6	19.8	20.1	20.8	19.3	19.6	19.8	20.1	20.8
	12H	19.3	19.6	19.9	20.1	20.7	19.3	19.6	19.9	20.1	20.7
12H	4H	19.2	19.6	19.7	20.1	20.5	19.2	19.6	19.7	20.1	20.5
	6H	19.3	19.6	19.8	20.1	20.7	19.3	19.6	19.8	20.1	20.7
	8H	19.3	19.5	19.9	20.0	20.6	19.3	19.5	19.9	20.0	20.6

Variations with the observer position for the luminaire spacings. S:

S = 1.0H	2.3 / -3.8	2.3 / -3.8
S = 1.5H	4.5 / -7.4	4.5 / -7.4
S = 2.0H	6.3 / -8.2	6.3 / -8.2

Coefficients of Utilization

Ceiling reflectance	80	70	50	30	10	0												
Wall reflectance	70 50 30	10 70 50	30 10 50	30 10 50	30 10 50	30 10 0												
Floor reflectance	20 20 20	20 20 20	20 20 20	20 20 20	20 20 20	20 20 0												
RCR	(RCR: Room Cavity Ratio)																	
Room Values are expressed as percentage of Lumen delivered to the task surface																		
0	119	119	119	119	116	116	116	116	111	111	111	106	106	106	102	102	102	100
1	113	110	107	105	110	108	105	103	104	102	100	100	98	97	97	95	94	92
2	107	101	97	93	105	100	96	92	96	93	90	93	91	88	91	88	87	85
3	101	94	88	84	99	92	87	83	90	86	82	87	84	81	85	82	80	78
4	95	87	81	76	93	86	80	76	84	79	75	82	77	74	80	76	73	72
5	90	81	75	70	88	80	74	70	78	73	69	76	72	68	75	71	68	66
6	85	75	69	64	83	74	68	64	73	68	64	71	67	63	70	66	63	61
7	80	70	64	59	79	70	64	59	68	63	59	67	62	59	66	62	58	57
8	76	66	60	55	75	65	59	55	64	59	55	63	58	54	62	58	54	53
9	72	62	56	51	71	61	55	51	60	55	51	60	54	51	59	54	51	49
10	69	58	52	48	68	58	52	48	57	52	48	56	51	48	55	51	48	46